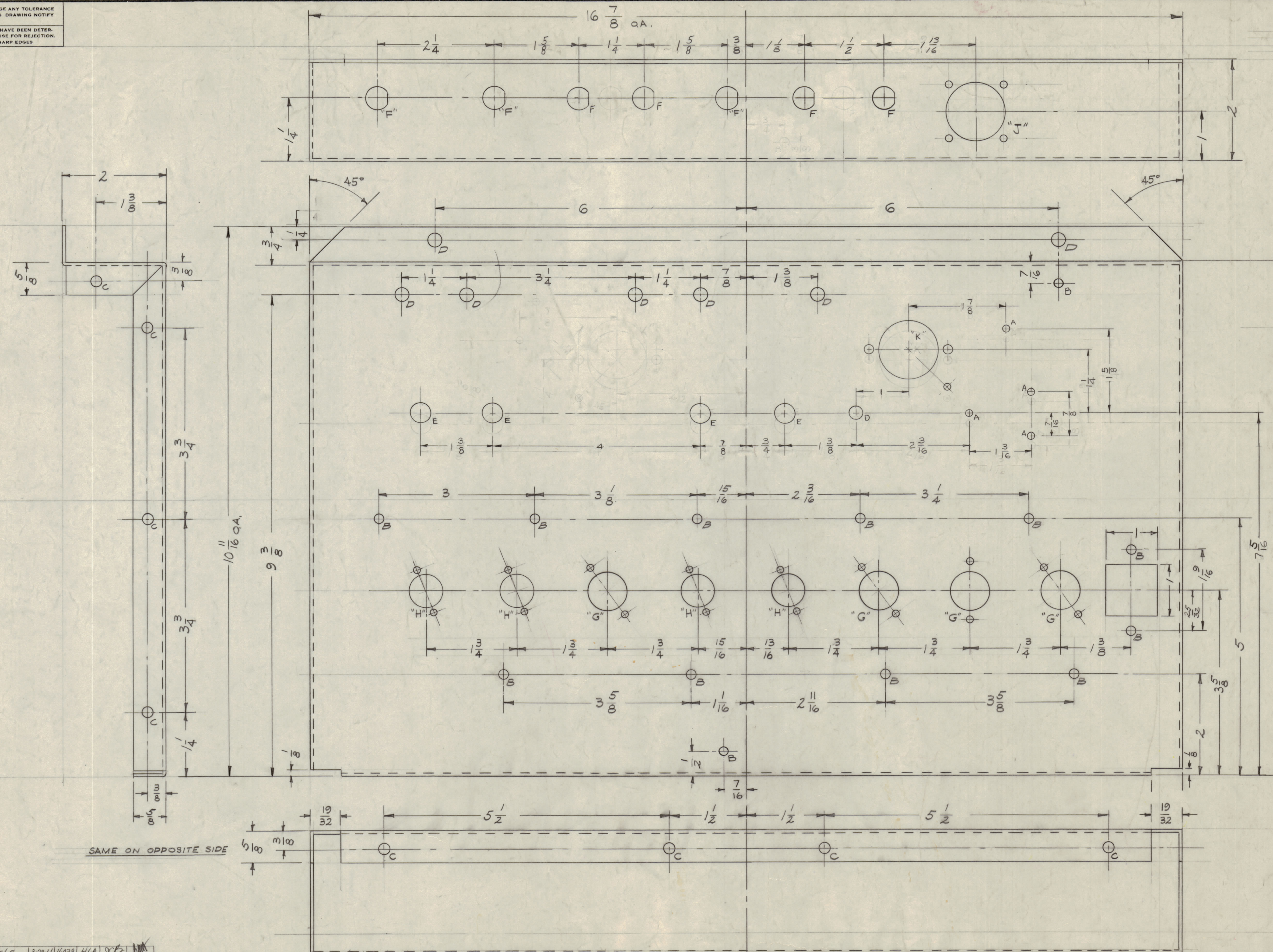
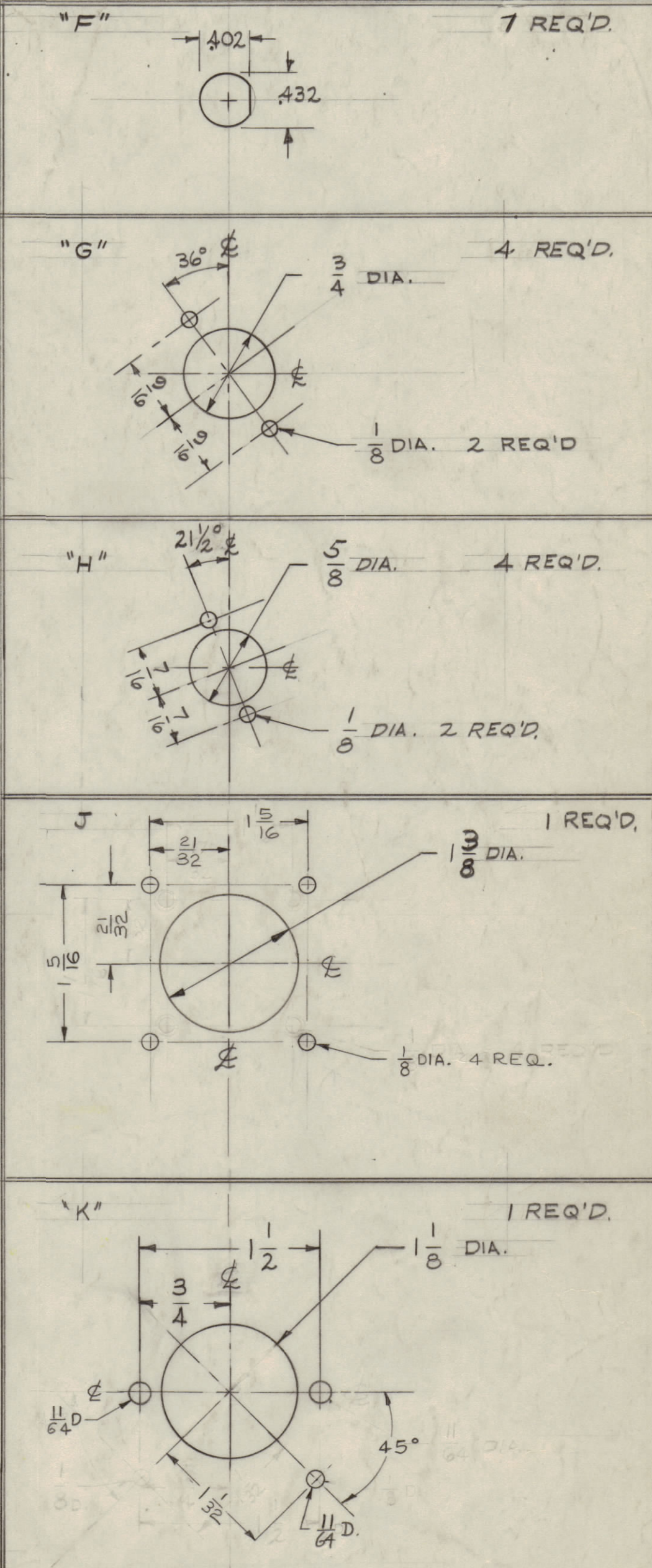


IF IT IS FOUND DESIRABLE TO CHANGE ANY TOLERANCE OR OTHER DETAIL SPECIFIED ON THIS DRAWING NOTIFY THE PURCHASER PROMPTLY.
 MAXIMUM ALLOWABLE TOLERANCES HAVE BEEN DETERMINED AND DEVIATIONS WILL BE CAUSE FOR REJECTION. REMOVE ALL BURRS AND SHARP EDGES



HOLES	REQ'D.
A - 1/8 (.125) DIA.	5
B - 11/64 (.171) DIA.	11
C - 13/64 (.203) DIA.	12
D - 1/4 (.250) DIA.	8
E - 3/8 (.375) DIA.	4



MS-1867 F

NOTICE TO PERSONS RECEIVING THIS DRAWING
 THE TECHNICAL MATERIEL CORPORATION claims proprietary right in the material disclosed hereon. This drawing is issued in confidence for engineering information only and may not be reproduced or used to manufacture anything shown hereon without permission from THE TECHNICAL MATERIEL CORPORATION to the user. This drawing is loaned for mutual assistance and is subject to recall at any time.
 Property of:
 THE TECHNICAL MATERIEL CORPORATION
 WASHINGTON, NEW YORK

ISSUE	ITEM	CHANGED FROM	DATE	CH. NO.	DRAFTS	CHECKER	ENG. APP.
F	1	DELETED 1 "B" HOLE	3-28-46	16028	NLA		
E	1	ONE "F" HOLE REL (ADDED)	1-25-46	1884	EVV		
D	1	10 HOLES ADDED (TOP LIP)	1-23-46	3958	RELL		
C	1	ON "K" DETAIL 1/4 DIA HOLE WAS 1/8	10-14-40	3147	HT		
B	1	7 5/8 WAS 7 1/8 1" HOLE 1 3/8 WAS 1 1/8 ADDED 2 "B" HOLES	6-2	2398			
A	2	REDIM. "J" DIAGRAM	5-2-40	2222	CU		

REQ. PER UNIT	MODEL	PROJECT NO.	ASSY. NO.	DATE	HEAT TREAT. SPEC.	CHECKED	FINAL APPROVAL
1	CHL-1						
					S404-YEL. IRIDITE		
					FINISH & SPEC. NO.		