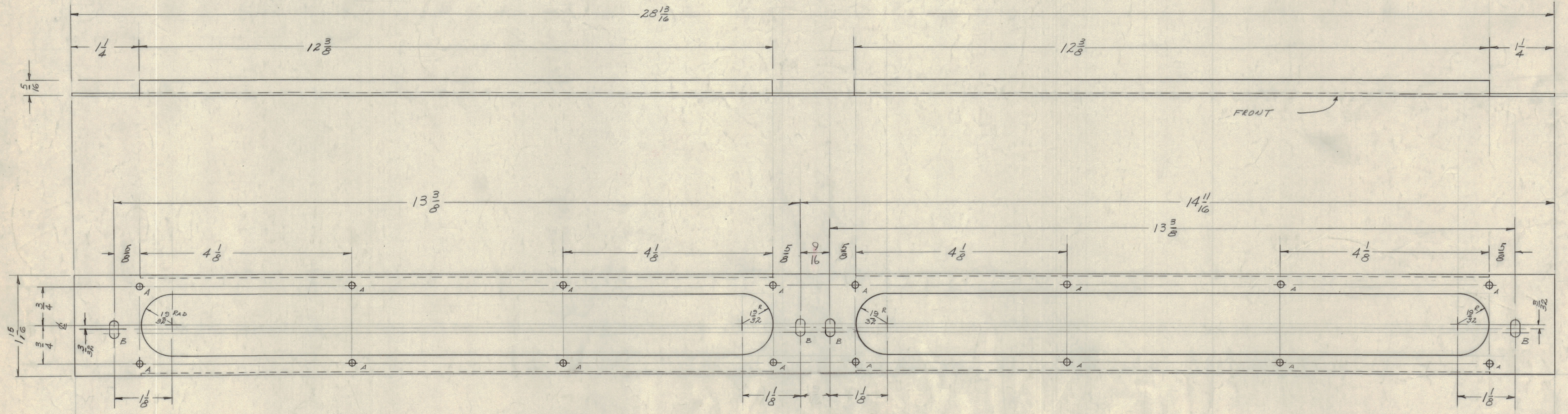


IF IT IS FOUND DESIRABLE TO CHANGE ANY TOLERANCE OR OTHER DETAIL SPECIFIED ON THIS DRAWING NOTIFY THE PURCHASER PROMPTLY.
 MAXIMUM ALLOWABLE TOLERANCES HAVE BEEN DETERMINED AND DEVIATIONS WILL BE CAUSE FOR REJECTION. REMOVE ALL BURRS AND SHARP EDGES

NOTICE TO PERSONS RECEIVING THIS DRAWING
 THE TECHNICAL MATERIEL CORPORATION claims proprietary right in the material disclosed herein. This drawing is issued in confidence for engineering information only and may not be reproduced or used to manufacture anything shown herein without permission from THE TECHNICAL MATERIEL CORPORATION to the user. This drawing is loaned for mutual assistance and is subject to recall at any time.
 Property of:
 THE TECHNICAL MATERIEL CORPORATION
 MAMARONECK, NEW YORK

HOLE LEGEND
 A - $\frac{1}{8}$ (.125) Dia. 16 REQ.
 B - $\frac{3}{16} \times \frac{1}{4}$ SLOT 4 REQ.



FINISH NOTE:
 1. 5404 IRIDITE
 2. 5114 ZINC CHEM. PRIM.
 3. 5115 TMC GREY } FRONT ONLY.

ISSUE	ITEM	CHANGED FROM	DATE	BY	CHECKER	ENG. APP.
A	1	GPT-40K ADDED	1-27-60	WJ	JLB	
TOLERANCES						
ALL DEC. DIM. \pm 1/16			DRILL, PUNCH, COMMERCIAL STOCK SIZES AND MANUFACTURERS TOLERANCES ARE NOT INCLUDED.			
OTHERS						

REQ. PER UNIT	MODEL	PROJECT NO.	ASSY. NO.	DATE
1	AT-101	GPT-40K		1-27-60
1	AM-109	GPT-40K		1-27-60
1	GPT-10K	AX-173		10/21/59
USED ON				

REQ. ITEM	PART NO.	DESCRIPTION	SYMBOL
.051		THE TECHNICAL MATERIEL CORP. MAMARONECK, NEW YORK	
ALUMINUM	50	FRAME, WINDOW	
MATERIAL	WEIGHT PER PC.		
5052-H32	10/21/59		
TYPE & TEMPER			
HEAT TREAT. SPEC.			
SEE NOTE			
FINISH & SPEC. NO.			

MS-1904 A