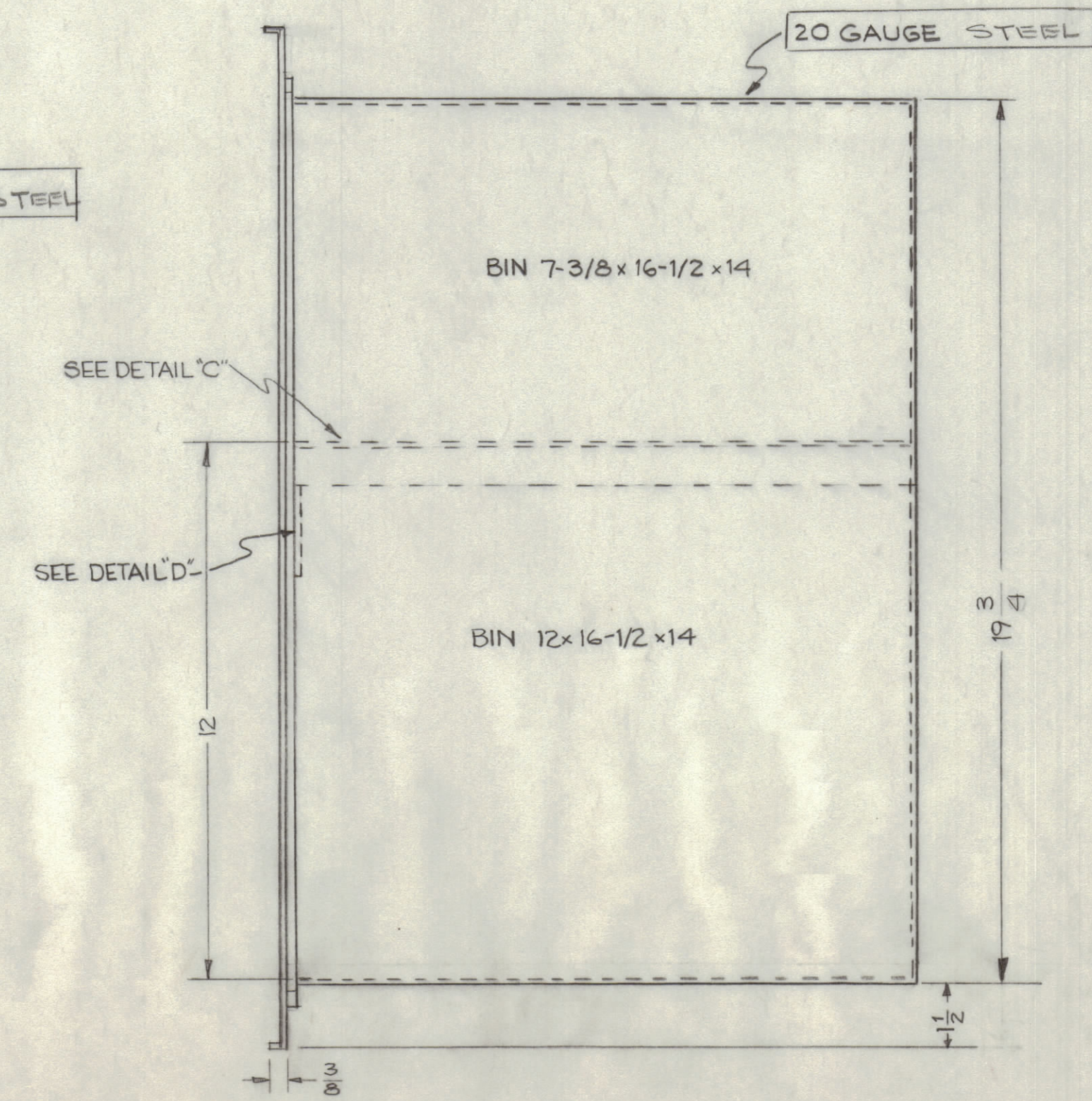
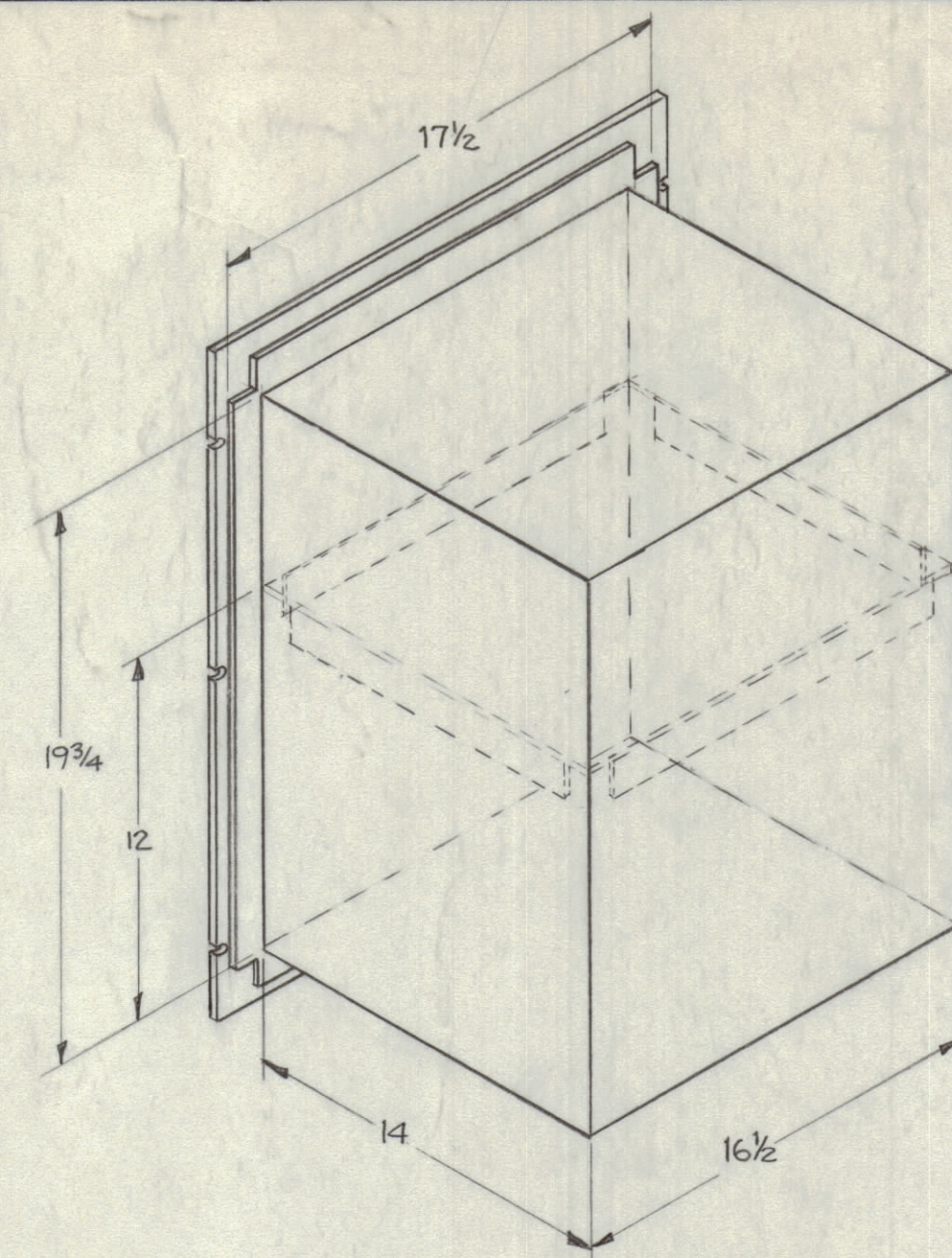
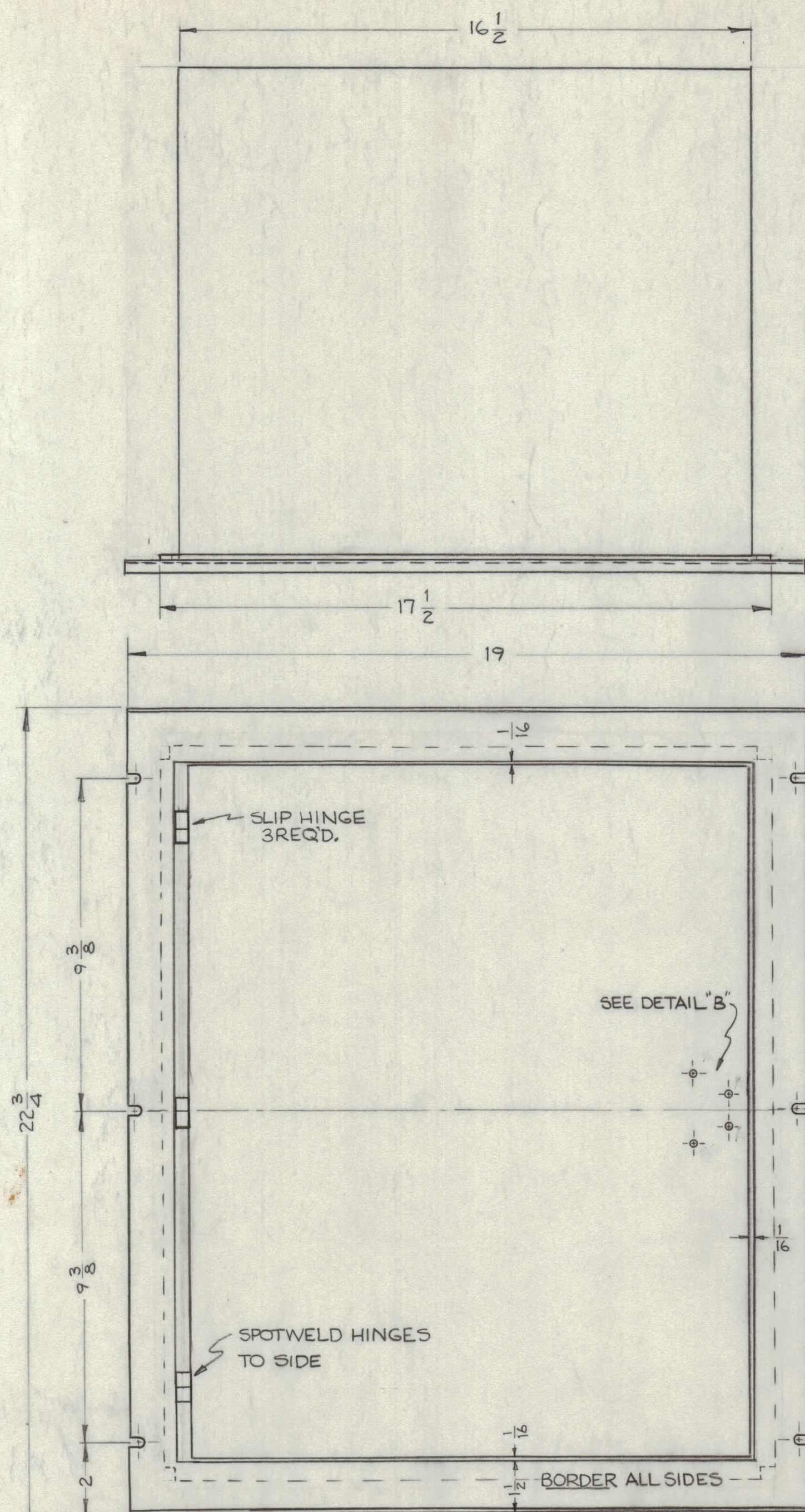


IF IT IS FOUND DESIRABLE TO CHANGE ANY TOLERANCE OR OTHER DETAIL SPECIFIED ON THIS DRAWING NOTIFY THE PURCHASER PROMPTLY.
 MAXIMUM ALLOWABLE TOLERANCES HAVE BEEN DETERMINED AND DEVIATIONS WILL BE CAUSE FOR REJECTION. REMOVE ALL BURRS AND SHARP EDGES

NOTICE TO PERSONS RECEIVING THIS DRAWING

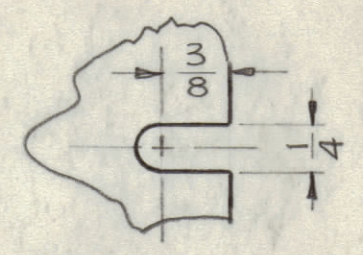
THE TECHNICAL MATERIEL CORPORATION claims proprietary right in the material disclosed herein. This drawing is issued in confidence for engineering information only and may not be reproduced or used to manufacture anything shown hereon without permission from THE TECHNICAL MATERIEL CORPORATION to the user. This drawing is loaned for mutual assistance and is subject to recall at any time.

Property of:
 THE TECHNICAL MATERIEL CORPORATION
 MAMARONECK, NEW YORK

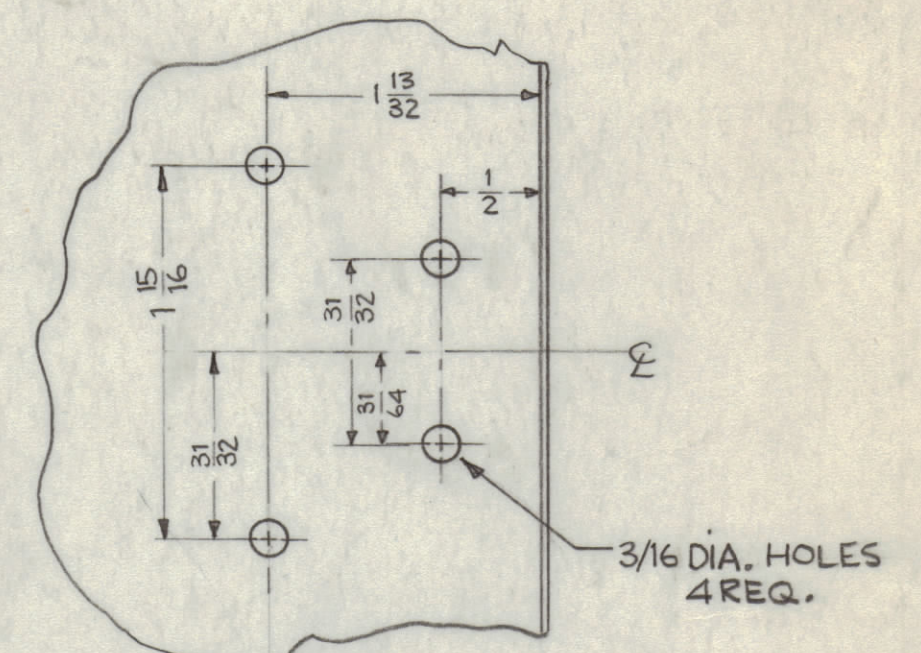


FINISH NOTE:
 S-371 DEGREASING
 S-114 ZINC CHROMATE PRIMER
 S-220 RCAF SMOOTH BLUE GRAY ENAMEL

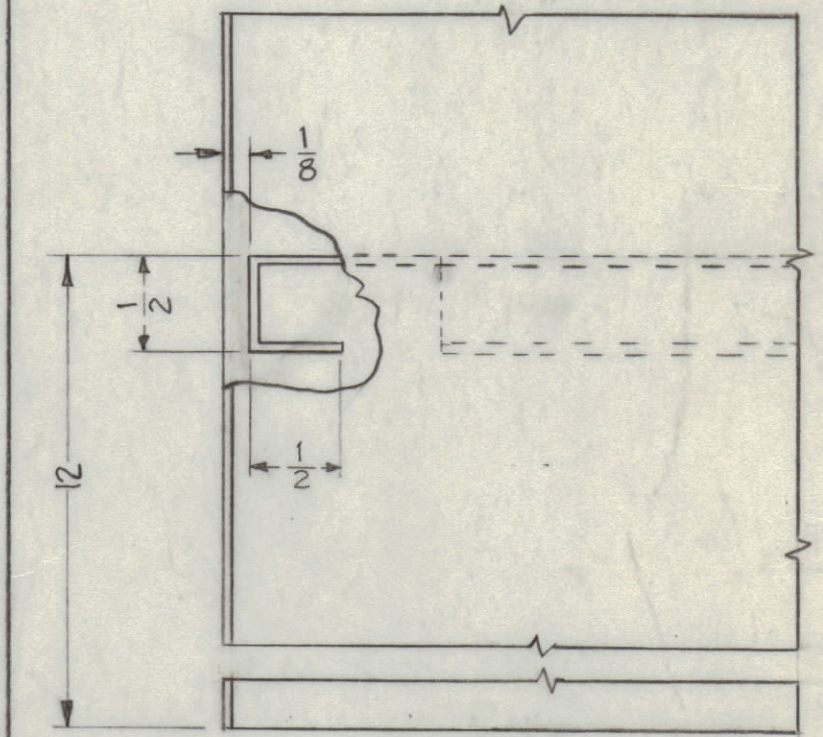
NOTE:
 SPOT WELD TO MAKE ONE UNIT.
 MATERIAL: STEEL AS NOTED.
 FLUSH INTERIOR EXCEPT SHELF.
 TMC BLUE GRAY SMOOTH ENAMEL
 INTERIOR AND EXTERIOR, FRONT
 DOOR AND FRAME.



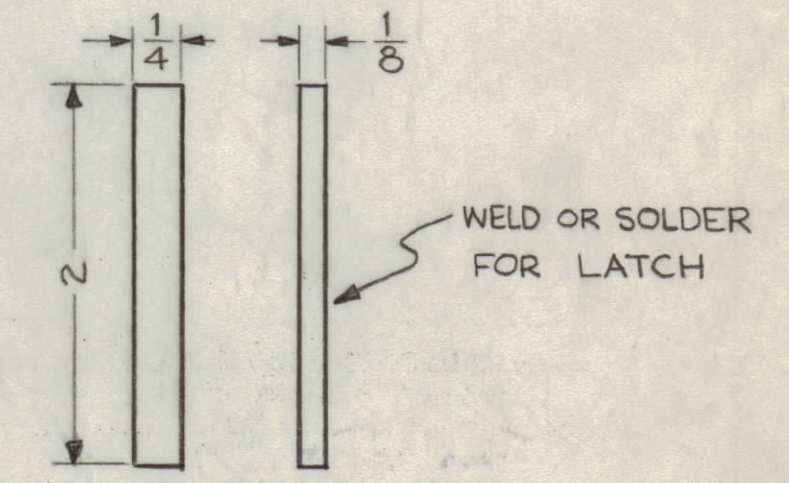
DETAIL "A"
 (SLOT 6 REQ.)



DETAIL "B"
 LATCH MOUNTING
 LAYOUT
 (1 REQ.)



DETAIL "C"
 (SHELF)



DETAIL "D"
 (FLUSH BAR 1REQ.)
 16 GA. STEEL

ISSUE	ITEM	CHANGED FROM	DATE	CN. NO.	DRAFTS	CHECKER	ENG. APP.
TOLERANCES		SCALE:					
ALL	DEC. DIM.	±	DRILL, PUNCH, COMMERCIAL STOCK				
OTHERS	FRAC. DIM.	±	SIZES AND MANUFACTURERS				
	ANGULAR DIM.	±	TOLERANCES ARE NOT INCLUDED.				

1	CONSOLE			1-7-60
REQ PER UNIT	MODEL	PROJECT NO.	ASBY. NO.	DATE
USED ON				

REQ. ITEM	PART NO.	DESCRIPTION	SYMBOL
THE TECHNICAL MATERIEL CORP. MAMARONECK, NEW YORK			
STOCK SIZE			
STEEL		CONSOLE STORAGE CABINETS	
MATERIAL	WEIGHT PER PC.		
TYPE & TEMPER		DR. M.	
HEAT TREAT. SPEC.		DRAWN	ELEC. DES. APP.
SEE NOTE		CHECKED	MECH. DES. APP.
FINISH & SPEC. NO.		FINAL APPROVAL	
		MS-1931	

MS-1931