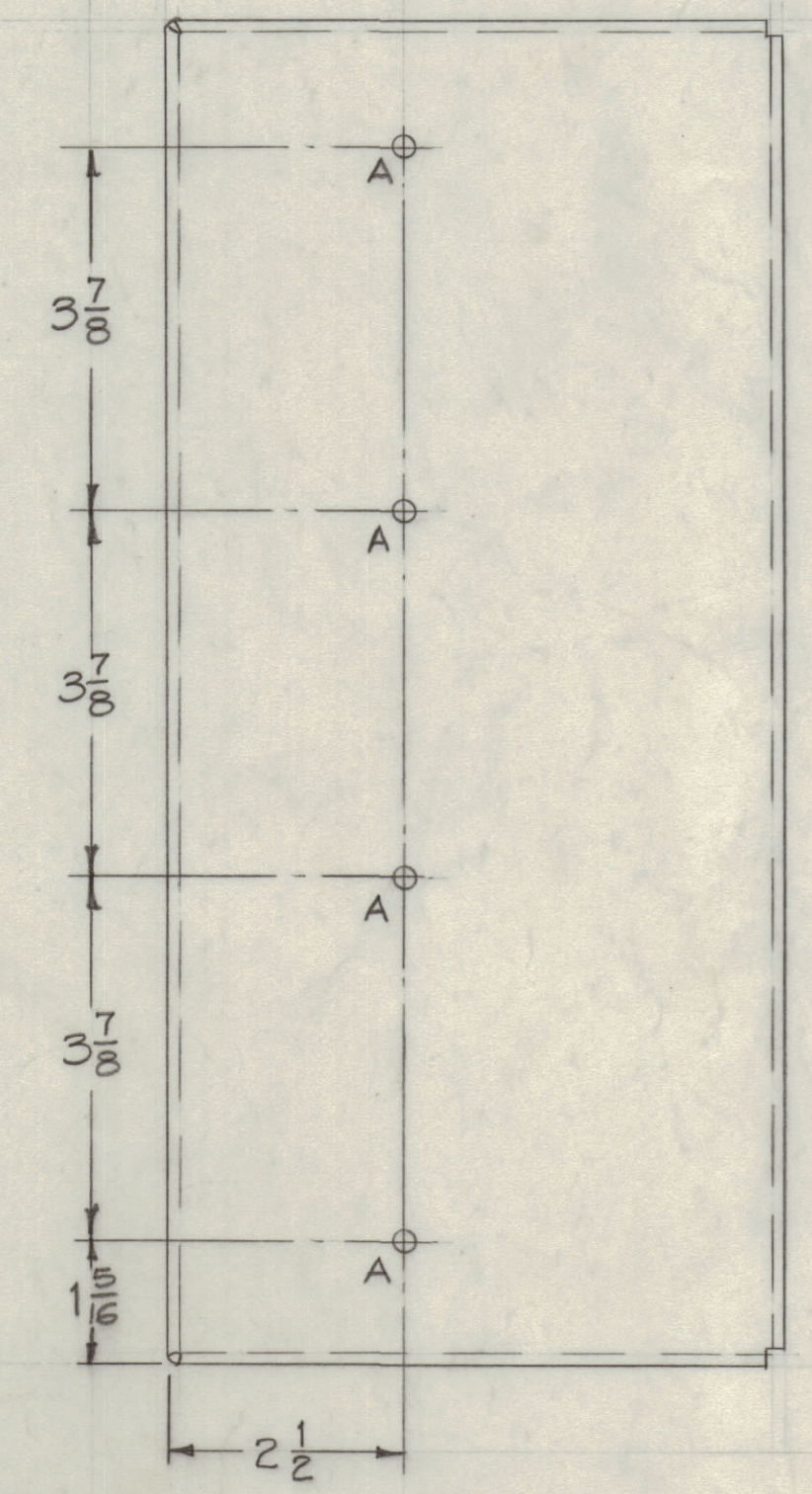
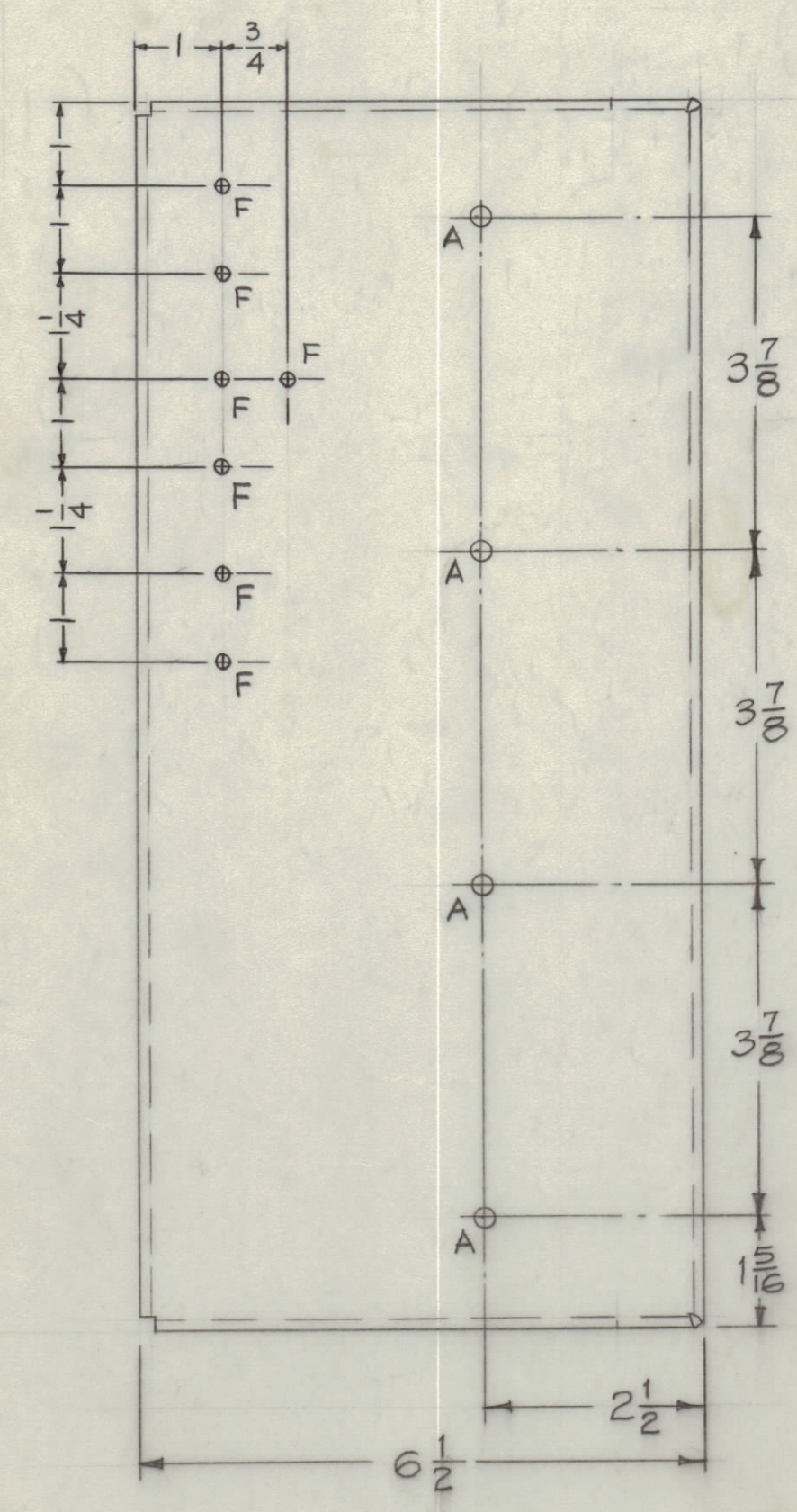
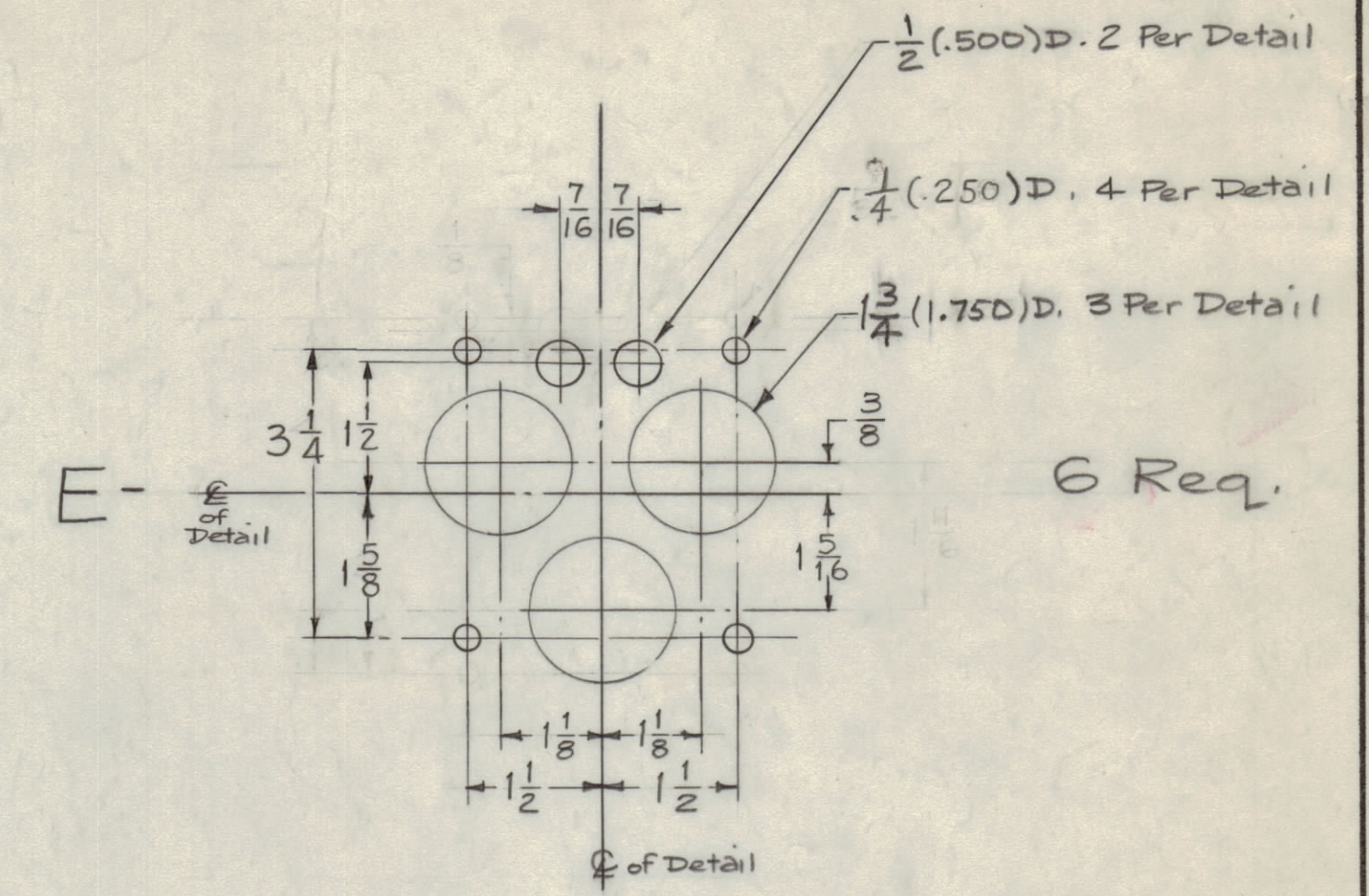
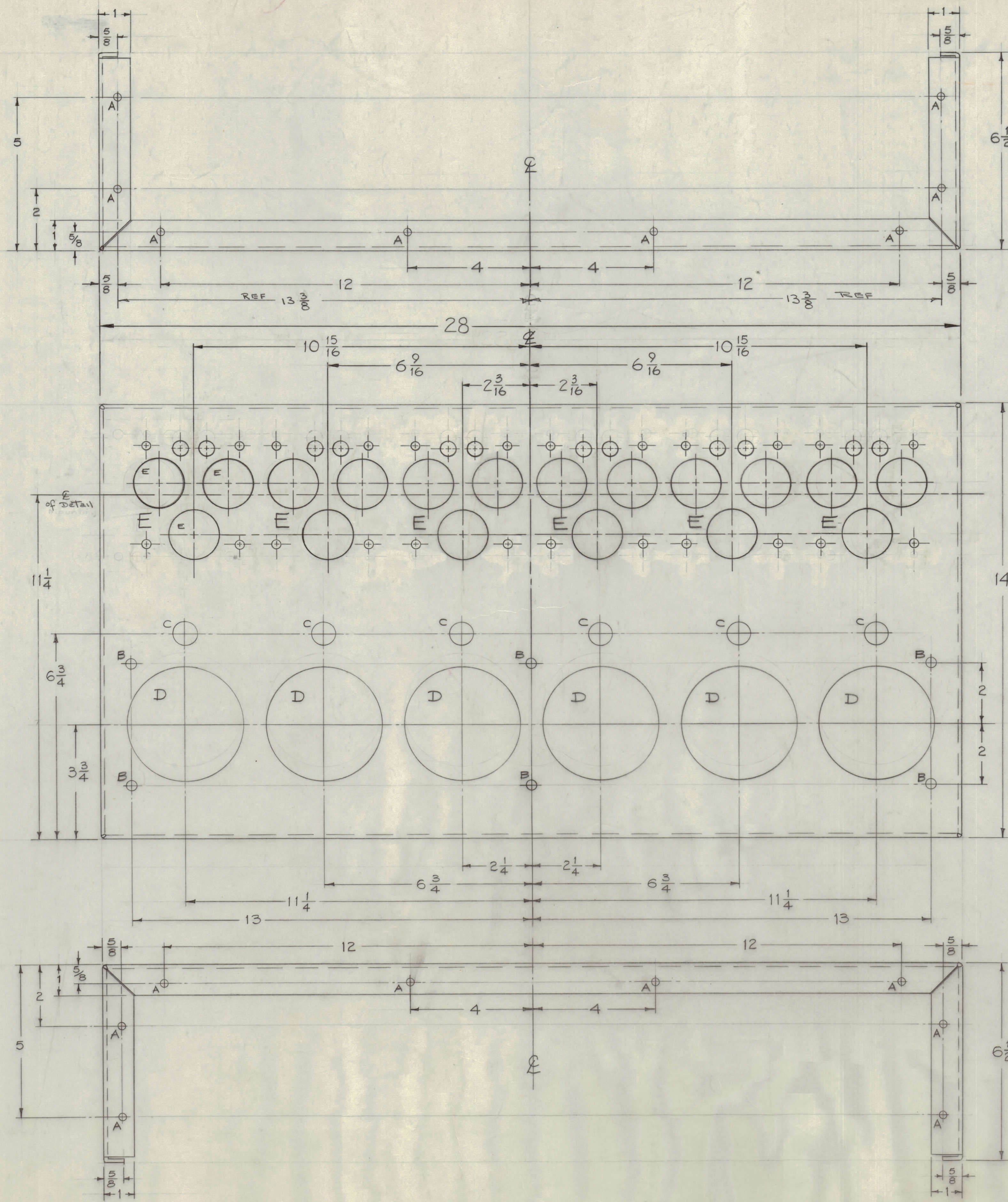


IF IT IS FOUND DESIRABLE TO CHANGE ANY TOLERANCE OR OTHER DETAIL SPECIFIED ON THIS DRAWING NOTIFY THE PURCHASER PROMPTLY.  
 MAXIMUM ALLOWABLE TOLERANCES HAVE BEEN DETERMINED AND DEVIATIONS WILL BE CAUSE FOR REJECTION. REMOVE ALL BURRS AND SHARP EDGES

- A -  $\frac{7}{32}$  (.218)D. 24 Req.
- B -  $\frac{5}{16}$  (.312)D. 6 Req.
- C -  $\frac{3}{4}$  (.750)D. 6 Req.
- D -  $3\frac{3}{4}$  (3.750)D. 6 Req.
- E - SEE DETAIL
- F -  $11/64$  (.171)DIA. 7 Req.



NOTICE TO PERSONS RECEIVING THIS DRAWING  
 THE TECHNICAL MATERIEL CORPORATION claims proprietary right in the material disclosed hereon. This drawing is issued in confidence for engineering information only and may not be reproduced or used to manufacture anything shown hereon without permission from THE TECHNICAL MATERIEL CORPORATION to the user. This drawing is loaned for mutual assistance and is subject to recall at any time.  
 Property of:  
 THE TECHNICAL MATERIEL CORPORATION  
 MAMARONECK, NEW YORK

REQ. ITEM	PART NO.	DESCRIPTION	SYMBOL
1	AP-105	GPT-40K	
1/8 THK.		THE TECHNICAL MATERIEL CORP.	
ALUMINUM		MAMARONECK, NEW YORK	
MATERIAL		CHASSIS, MAIN	
5052-H32			
TYPE & TEMPER		16/15/60	25
HEAT TREAT SPEC.		2404	827
FINISH & SPEC. NO.		IRIDITE	

ISSUE	ITEM	CHANGED FROM	DATE	CN. NO.	DRAFTS	CHECKER	ENG. APP.
A	2	1 3/4 WAS 1 1/2 ON DETAIL E					
	1	IN "E" DETAIL WAS 7/8 (.218)	2-12-60				

TOLERANCES  
 SCALE: 1/2 (Do Not Scale)  
 ALL DEC. DIM. ± 1/64  
 OTHERS ANGULAR DIM. ±

REQ. PER UNIT	MODEL	PROJECT NO.	ASSY. NO.	DATE
1	AP-105	GPT-40K		

MS-1932 A