

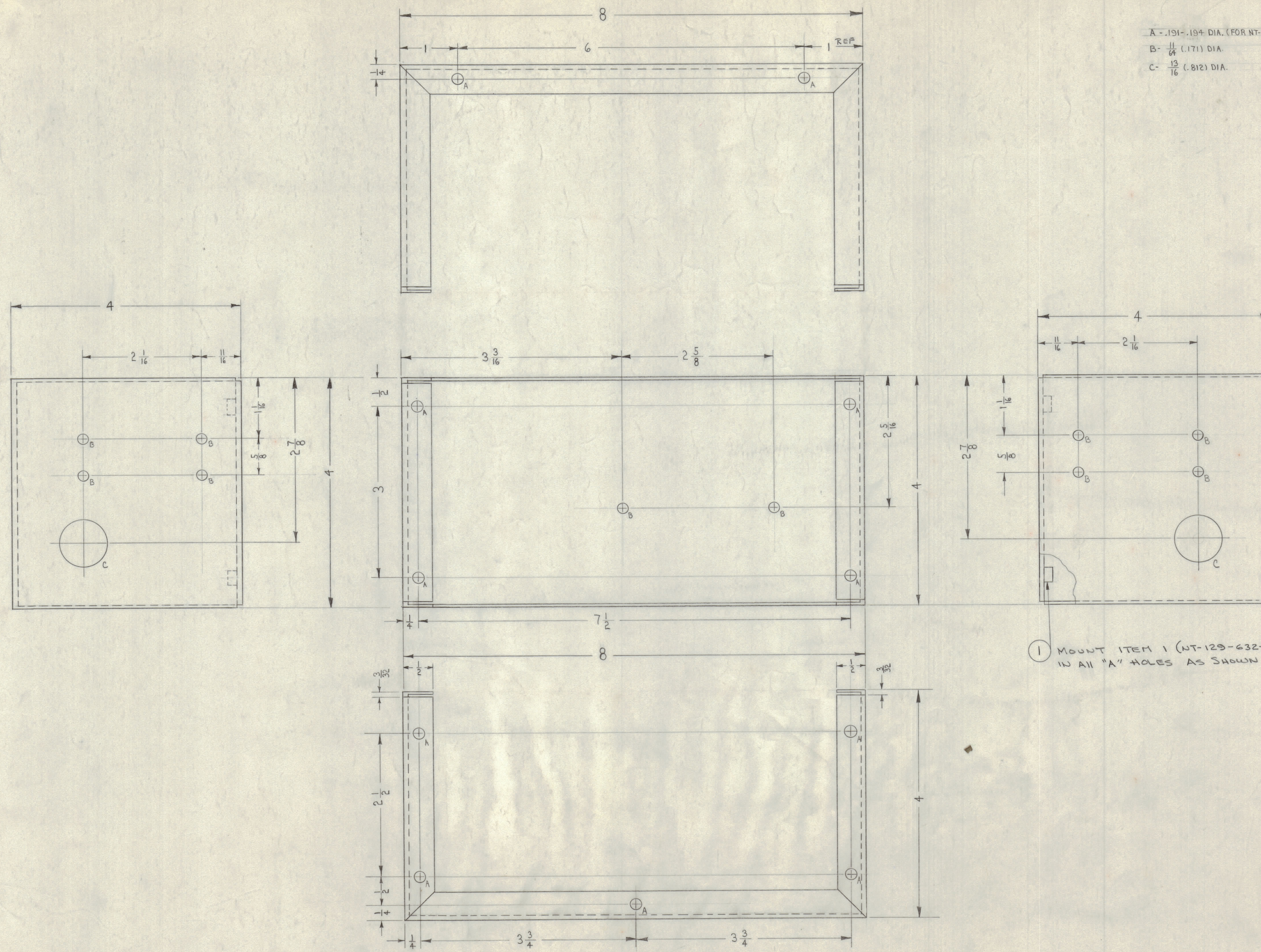
IF IT IS FOUND DESIRABLE TO CHANGE ANY TOLERANCE OR OTHER DETAIL SPECIFIED ON THIS DRAWING NOTIFY THE PURCHASER PROMPTLY.  
 MAXIMUM ALLOWABLE TOLERANCES HAVE BEEN DETERMINED AND DEVIATIONS WILL BE CAUSE FOR REJECTION. REMOVE ALL BURRS AND SHARP EDGES

A - .191 - .194 DIA. (FOR NT-129-632-4) 11 REQ.  
 B -  $\frac{11}{64}$  (.171) DIA. 8 REQ.  
 C -  $\frac{13}{16}$  (.812) DIA. 2 REQ.

**NOTICE TO PERSONS RECEIVING THIS DRAWING**

THE TECHNICAL MATERIEL CORPORATION claims proprietary right in the material disclosed hereon. This drawing is issued in confidence for engineering information only and may not be reproduced or used to manufacture anything shown hereon without permission from THE TECHNICAL MATERIEL CORPORATION to the user. This drawing is loaned for mutual assistance and is subject to recall at any time.

Property of:  
 THE TECHNICAL MATERIEL CORPORATION  
 MAMARONECK, NEW YORK



1 MOUNT ITEM 1 (NT-129-632-4) IN ALL "A" HOLES AS SHOWN.

MS-1964

ISSUE	ITEM	CHANGED FROM	DATE	CN. NO.	DRAFTS	CHECKER	ENG. APP.
TOLERANCES		SCALE: FULL					
ALL OTHERS	DEC. DIM. $\pm$ FRAC. DIM. $\pm$ ANGULAR DIM. $\pm$	DRILL PUNCH, COMMERCIAL STOCK SIZES AND MANUFACTURERS TOLERANCES ARE NOT INCLUDED.					

1	DCP-1			1-20-60
REQ PER UNIT	MODEL	PROJECT NO.	ASSY. NO.	DATE
USED ON				

1	1	NT-129-632-4	NUT, ROUND, SWAGE TYPE	
REQ.	ITEM	PART NO.	DESCRIPTION	SYMBOL
		.051 THK	THE TECHNICAL MATERIEL CORP. MAMARONECK, NEW YORK	
STOCK SIZE		CONTROL BOX		
MATERIAL		ALUMINUM		
WEIGHT PER PC.		5052-H32		
TYPE & TEMPER		DRAWN: [Signature] ELEC. DES. APP. [Signature] MECH. DES. APP. [Signature]		
HEAT TREAT. SPEC.		CHECKED: [Signature] FINAL APPROVAL: [Signature]		
FINISH & SPEC. NO.		5404 YEL IRIDITE		
				MS 1964