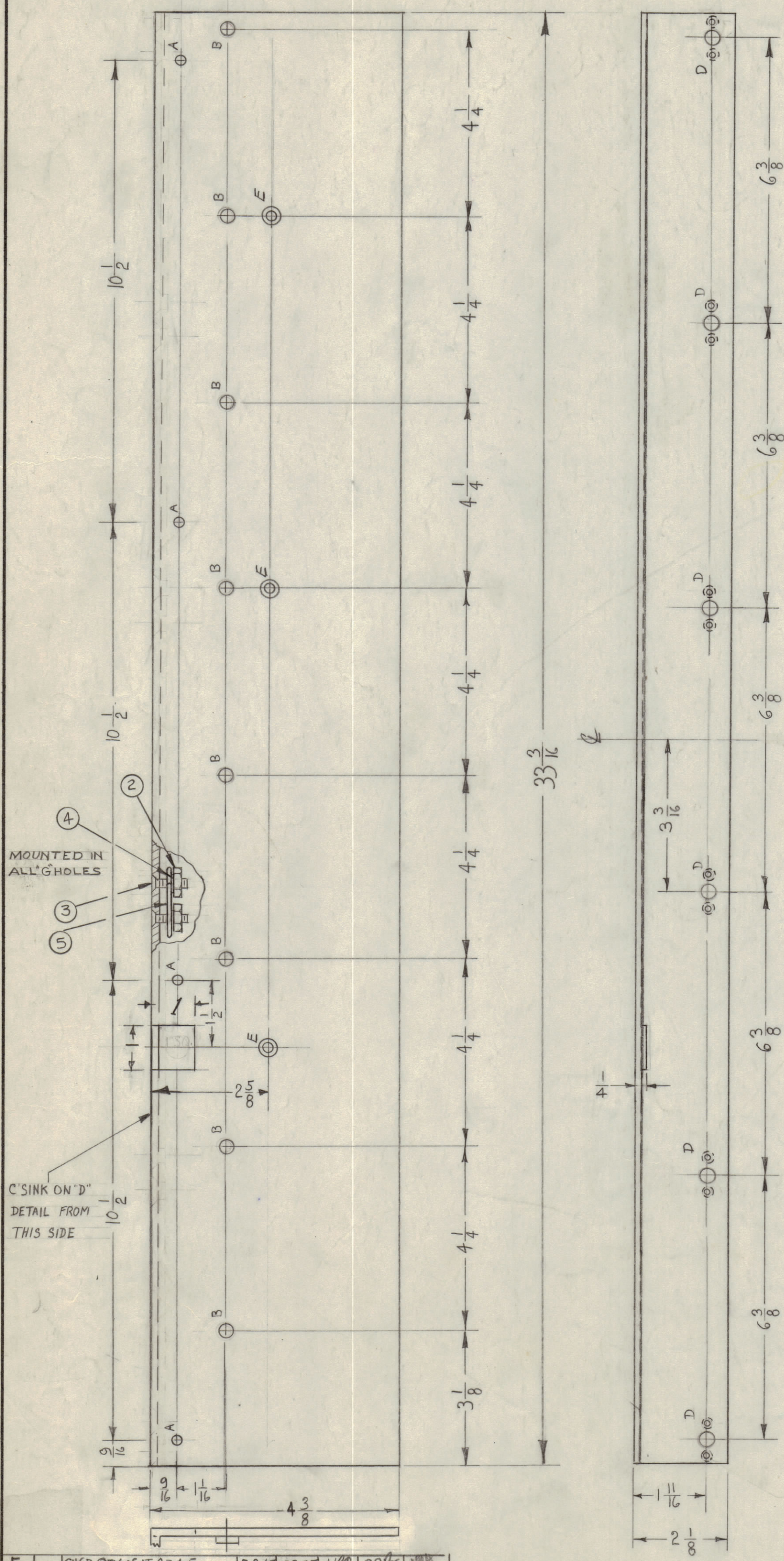
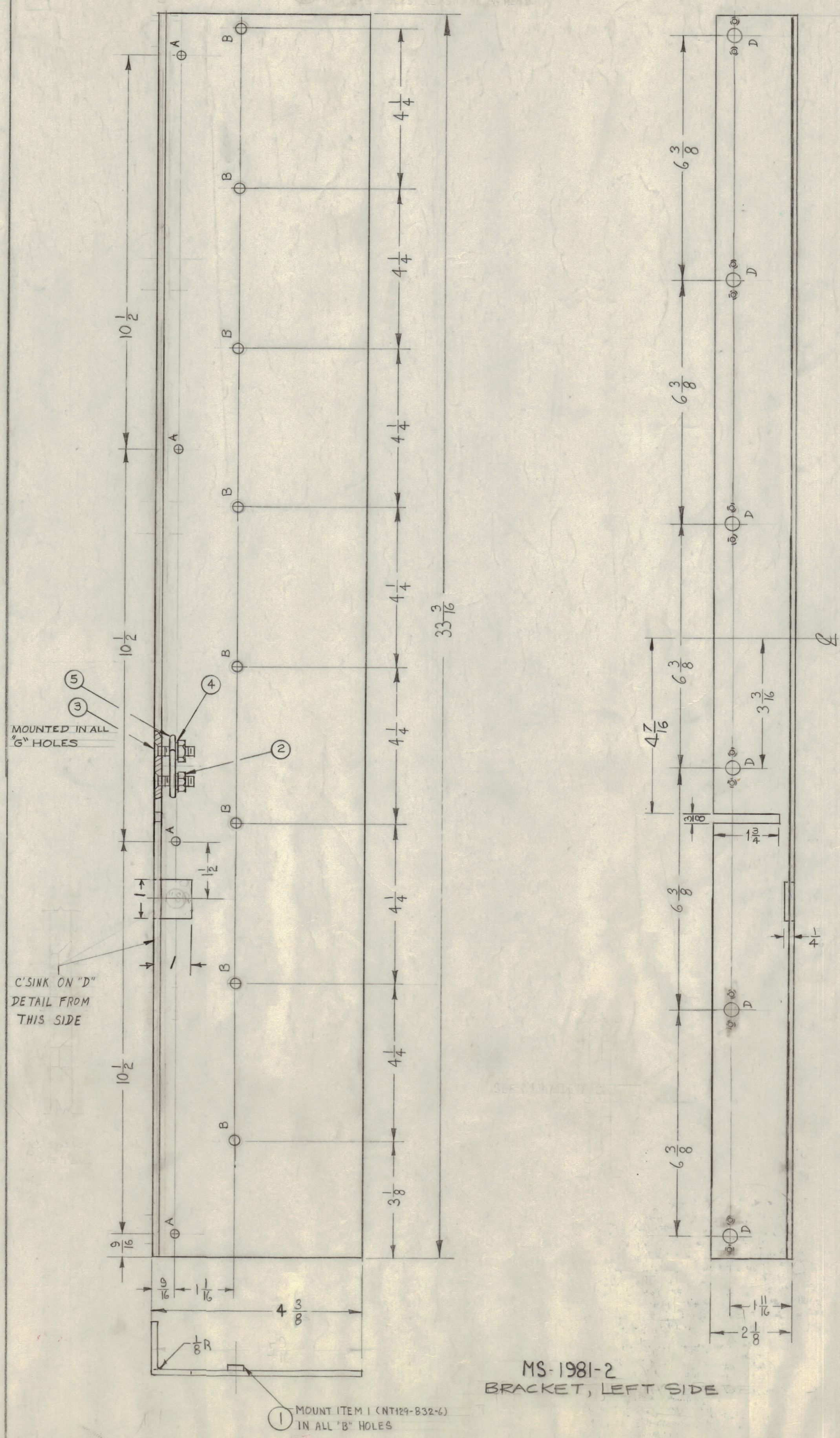


IF IT IS FOUND DESIRABLE TO CHANGE ANY TOLERANCE OR OTHER DETAIL SPECIFIED ON THIS DRAWING NOTIFY THE PURCHASER PROMPTLY.
 MAXIMUM ALLOWABLE TOLERANCES HAVE BEEN DETERMINED AND DEVIATIONS WILL BE CAUSE FOR REJECTION.
 REMOVE ALL BURRS AND SHARP EDGES



ISSUE	ITEM	CHANGED FROM	DATE	CN. NO.	DRAFTS	CHECKER	ENG. APP.
E	1	CHG'D QTY. OF IT. 2,3,4,5.	3-31-60	17875	RU	OCB	W
D	1	ON MS-1981-2 DIM. 4 1/16 WAS 4 1/16. DIM. 3 1/8 WAS 3 1/8.	1-27-60	4015	RU	OCB	W
C	1	ITEMS 2,3,4,5 ADDED	12/16/59	3051	RU	OCB	W
B	1	1 3/4 x 1/4 SLOT ADDED	8-4-59	2710	RU	OCB	W
A	1	4 3/8 DIM WAS 4 5/8 ON MS-1981-1 + MS-1981-2	5-20-59	2323	RU	OCB	W

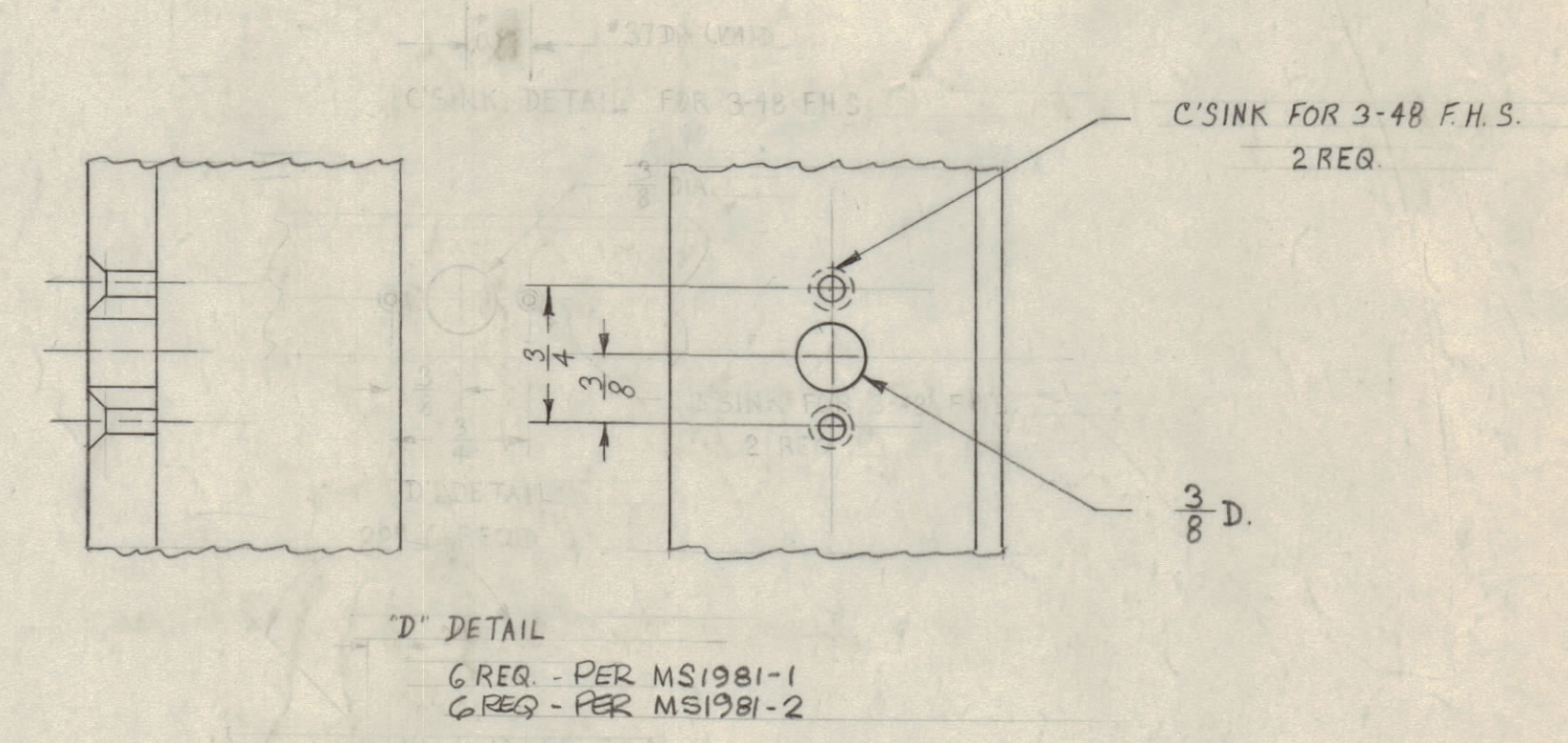
MS-1981-1
BRACKET, RIGHT SIDE



MS-1981-2
BRACKET, LEFT SIDE

HOLE LEGEND (PER PIECE)

HOLES	REQ.
A - 7/32 (.218) DIA.	4
B - .221-.224 DIA. FOR (NT-129-832-6)	8
D - SEE DETAIL	6
E - DR. & C'SINK FOR 10-32 F.H.S. ON MS-1981-1 ONLY	3



NOTICE TO PERSONS RECEIVING THIS DRAWING
 THE TECHNICAL MATERIEL CORPORATION claims proprietary right in the material disclosed herein. This drawing is issued in confidence for engineering information only and may not be reproduced or used to manufacture anything shown hereon without permission from THE TECHNICAL MATERIEL CORPORATION to the user. This drawing is loaned for mutual assistance and is subject to recall at any time.
 Property of:
 THE TECHNICAL MATERIEL CORPORATION
 MAMARONECK, NEW YORK

THESE BKT'S TO BE RIVETED TO FRAME BY FRAME MFR.

REQ. ITEM	PART NO.	DESCRIPTION	SYMBOL
6	5	FS-102-1	S. CLIP
12	4	LWS03MRN	LOCKWASHER SPLIT
12	3	SCFP0348BN8	SCREW MACHINE
12	2	NTH0348BN6	NUT HEX
8	1	NT-129-832-6	NUT, ROUND, SWAGE TYPE
STOCK SIZE			
ALUMINUM		THE TECHNICAL MATERIEL CORP. MAMARONECK, NEW YORK	
MATERIAL		BRACKET, ANGLE, REAR	
5052-H32		LEFT & RIGHT, (PA DECK)	
TYPE & TEMPER		DRAWN	
		ELEC. DES. APP. MECH. DES. APP.	
HEAT TREAT. SPEC.		CHECKED	
S404 YELL. IRIDITE		FINAL APPROVAL	
FINISH & SPEC. NO.		MS-1981	

NOTE:
QTY. SHOWN ARE PER PIECE

REQ. PER UNIT	MODEL	PROJECT NO.	ASSY. NO.	DATE
EACH	AX-208	GPT-40K		2-9-60
USED ON				

MS-1981