

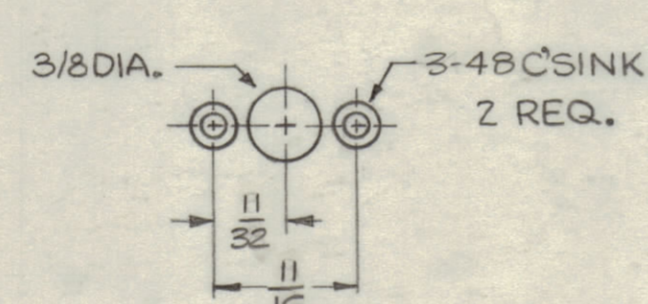
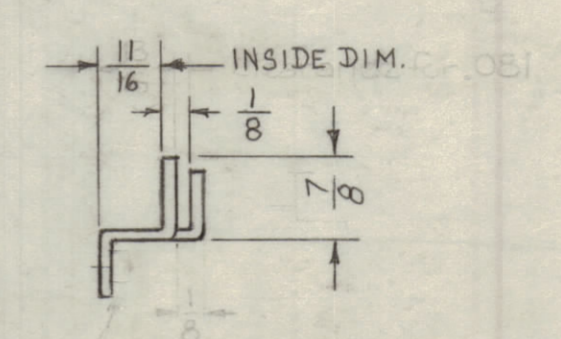
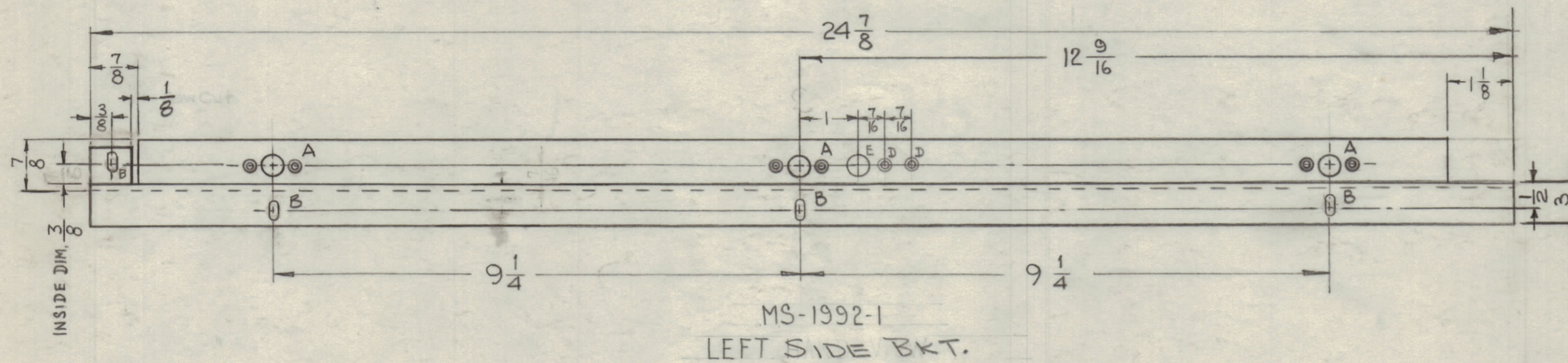
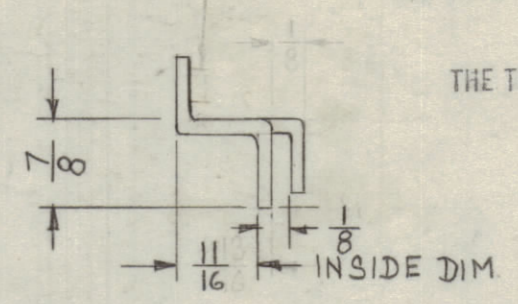
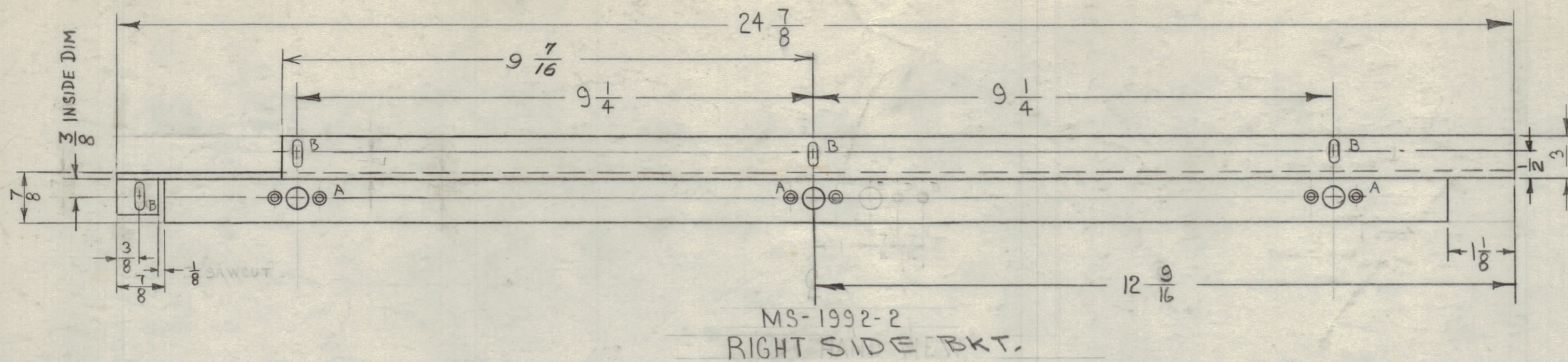
IF IT IS FOUND DESIRABLE TO CHANGE ANY TOLERANCE OR OTHER DETAIL SPECIFIED ON THIS DRAWING NOTIFY THE PURCHASER PROMPTLY.

MAXIMUM ALLOWABLE TOLERANCES HAVE BEEN DETERMINED AND DEVIATIONS WILL BE CAUSE FOR REJECTION. REMOVE ALL BURRS AND SHARP EDGES.

NOTICE TO PERSONS RECEIVING THIS DRAWING

THE TECHNICAL MATERIEL CORPORATION claims proprietary right in the material disclosed hereon. This drawing is issued in confidence for engineering information only and may not be reproduced or used to manufacture anything shown hereon without permission from THE TECHNICAL MATERIEL CORPORATION to the user. This drawing is loaned for mutual assistance and is subject to recall at any time.

Property of:  
THE TECHNICAL MATERIEL CORPORATION  
MAMARONECK, NEW YORK



"A" DETAIL  
6 Req'd.

B ~ 3/16 x 5/16 SLOT 8 REQ

NOTE  
D - DRILL & C'SINK FOR 6-32 FHS - 2" ON MS-1992-1 ONLY  
E - 3/8 (.375) D. 1" ON MS-1992-1 ONLY

MS-1992 C

TMC PART NO.	DESCRIPTION	HOLES
MS-1992-1	LEFT HAND SHOWN	ALL HOLES SUPPLY
MS-1992-2	RIGHT HAND (OPPOSITE VIEW)	DELETED HOLES

ISSUE	ITEM	CHANGED FROM	DATE	CH. NO.	DRAFTS	CHECKER	ENG. APP.
C	1	ADDED CUTOUT & 9/16 DIM	2/24/64	10935	A.M.		
B	3	8 B. SLOTS ADDED	11-3-60	3360			
	2	2 D & IE HOLE DELETED					
A	1	6 HOLES 3/32 & 2 3/16 HOLES DELETED	5-25-60	1948	M.B.		
	2	1 1/8 NOTCH ADDED					
	1	12 9/16 DIM WAS 2					

UNLESS OTHERWISE SPECIFIED DIMENSIONS ARE IN INCHES AND INCLUDE CHEMICALLY APPLIED OR PLATED FINISHES

DECIMALS  
X ± .05  
.XX ± .01  
.XXX ± .005

FRACTIONS  
± 1/64  
ANGLES  
± 0° 30'

TOLERANCES

CUT HERE  
DIM. NEED  
2-48

1 EACH	AP-103	GPT-40K		1-27-60
REQ. PER UNIT	MODEL	PROJECT NO.	ASSY. NO.	DATE
	USED ON			

REQ. ITEM	PART NO.	DESCRIPTION	SYMBOL
		THE TECHNICAL MATERIEL CORP. MAMARONECK, NEW YORK	
		STOCK SIZE	
		ALUMINUM	
		MATERIAL WEIGHT PERFC.	
		TYPE & TEMPER	
		HEAT TREAT. SPEC.	
		FINISH & SPEC. NO.	