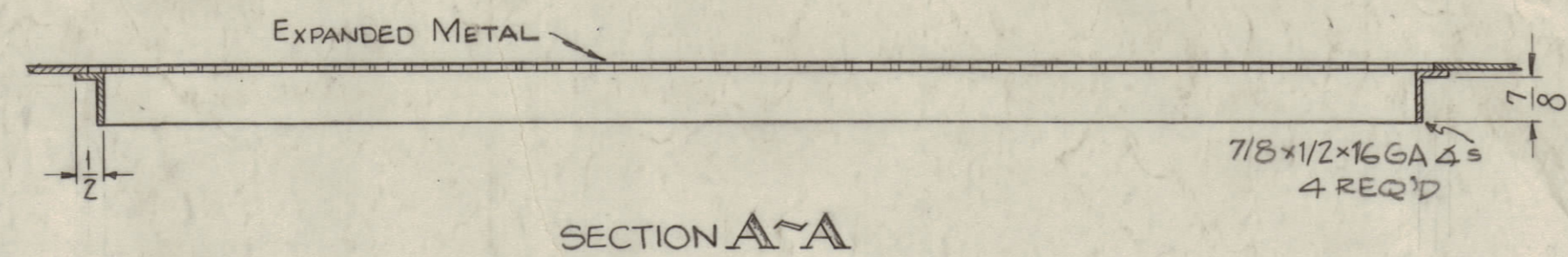
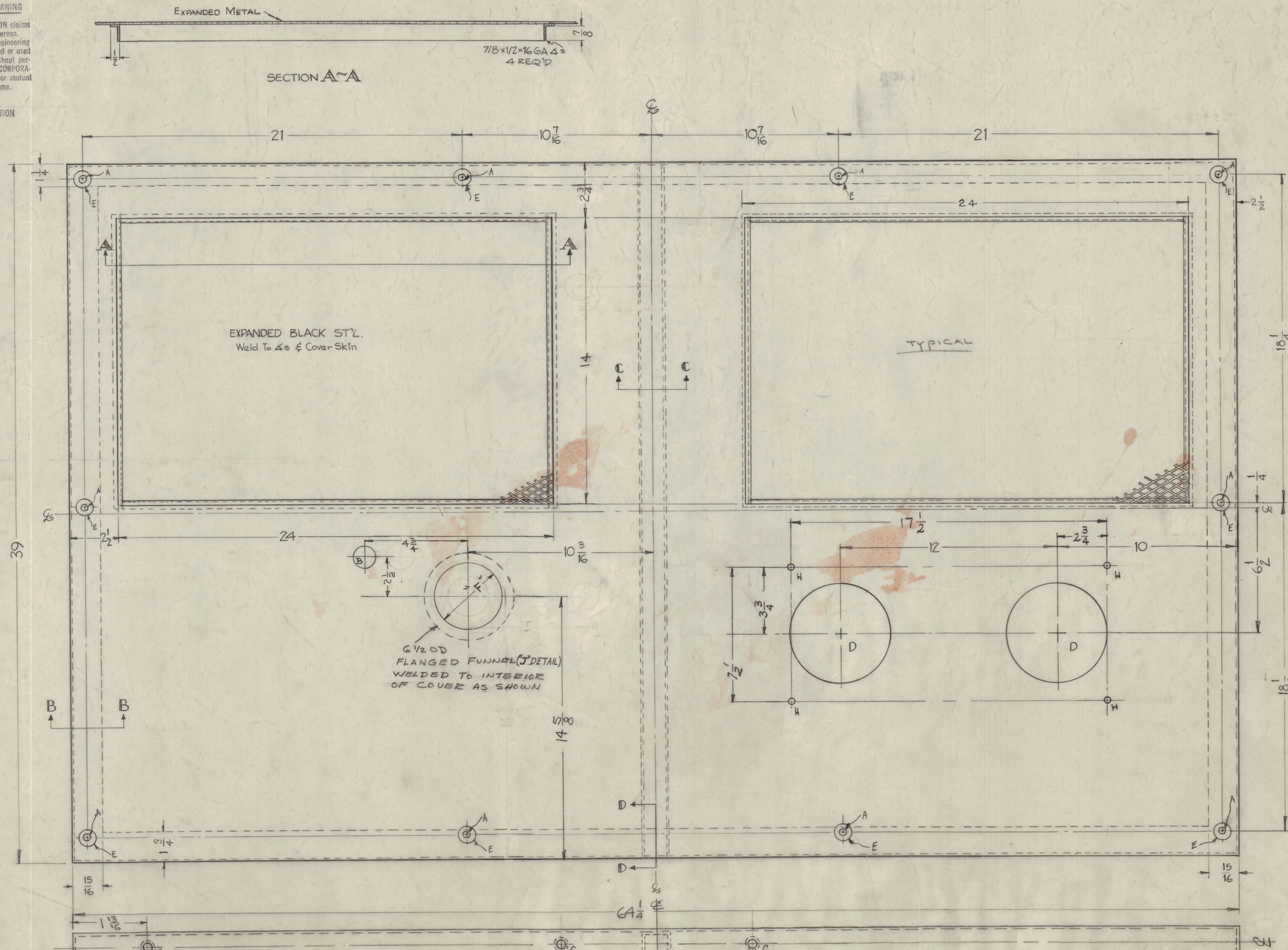


IT IS FOUND DESIRABLE TO CHANGE ANY TOLERANCE OR DETAIL SPECIFIED ON THIS DRAWING NOTIFY PURCHASER PROMPTLY.
 MAXIMUM ALLOWABLE TOLERANCES HAVE BEEN DETERMINED AND DEVIATIONS WILL BE CAUSE FOR REJECTION.
 REMOVE ALL BURRS AND SHARP EDGES

NOTICE TO PERSONS RECEIVING THIS DRAWING

THE TECHNICAL MATERIEL CORPORATION claims property right in the material disclosed herein. This drawing is issued in confidence for engineering information only and may not be reproduced or used to manufacture anything shown herein, without permission from THE TECHNICAL MATERIEL CORPORATION to the user. This drawing is loaned for mutual assistance and is subject to recall at any time.

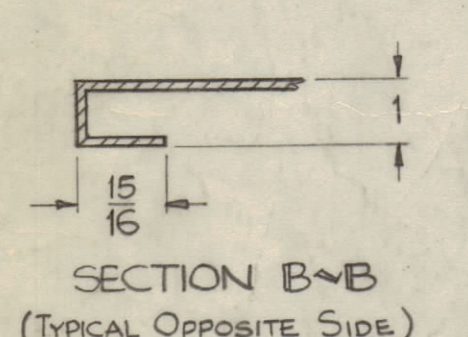
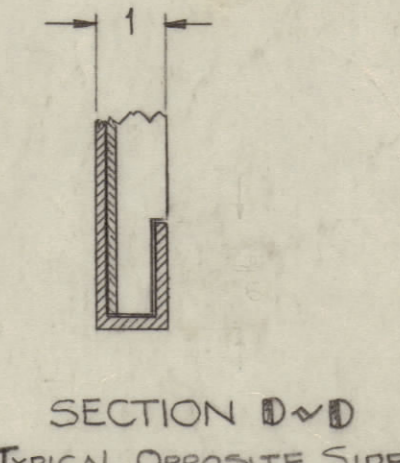
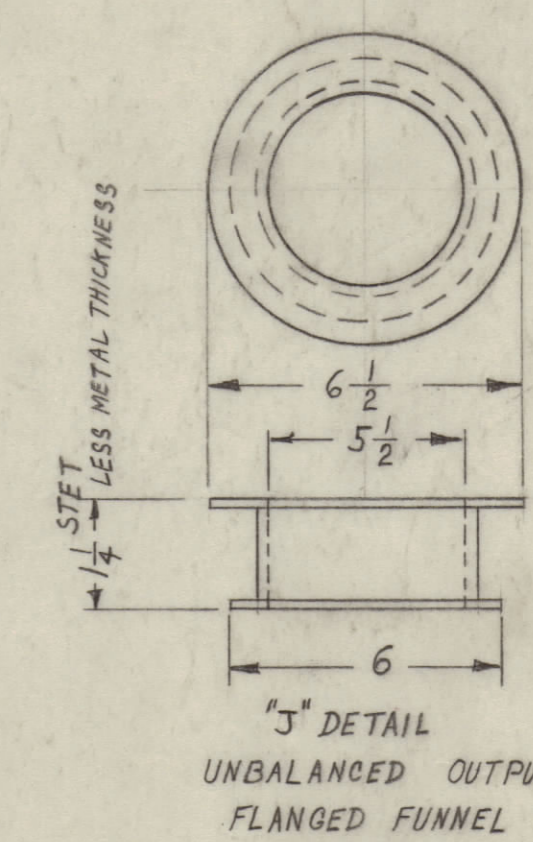
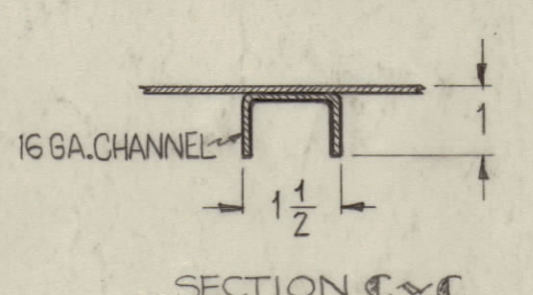
Property of:
 THE TECHNICAL MATERIEL CORPORATION
 MAMARONECK, NEW YORK



HOLES

HOLES	REQ.
A ~ 3/8 (.375) DIA.	10
B ~ 2-1/4 DIA.	2
C ~ DELETED	
D ~ 5-1/2 DIA.	2
E ~ 7/8 (.875) D	10
F ~ 5-9/16 D	1
* G ~ 10-32 RIVNUT	6
H ~ 2.21 - 2.24 DIA.	4

FOR NT: 129-832-4
 * MARS METAL PT. NO, S3-032-3



NOTE: FINISH
 S-371 STEEL DEGRASSING
 S-114 ZINC CHROMATE PRIMER
 S-220 BLUE GRAY, SMOOTH ENAMEL
 OR PRIME & PAINT TO CUSTOMER'S SPEC.

ISSUE	ITEM	CHANGED FROM	DATE	EN. NO.	DRAFTS	CHECKER	ENG. APP.
B	1	SIX "G" HOLES ADDED	3-25-64	1940	MM		
A	1	14" WAS 16	3-9-60		JDA	PJO	

ISSUE	ITEM	CHANGED FROM	DATE	EN. NO.	DRAFTS	CHECKER	ENG. APP.
F	1	CHG DIM FR-3 TO 2 3/4	2-10-64	10876	AM	TR	ONS
E	1	"G" HOLES WERE 10-32 TAP	5-23-60	2325		CB	AK
D	1	"B" HOLE RELOCATED	5/2/60	2216	CY	NO	WD
C	1	ADDED (4) "H" HOLES	4.19.60	2163	JI	CB	

NOTE: OPPOSITE SIDE IDENTICAL (REF "G" HOLES)

REQ. PER UNIT	MODEL	PROJECT NO.	ASBY. NO.	DATE
1	GPT-40K	AX-214		2-16-60

REQ. ITEM	PART NO.	DESCRIPTION	SYMBOL
16 GA. STOCK SIZE		THE TECHNICAL MATERIEL CORP. MAMARONECK, NEW YORK	
STEEL		COVER, TOP	
MATERIAL	WEIGHT PER PC.		
MILD			
TYPE & TEMPER			
HEAT TREAT. SPEC.			
SEE NOTE			
FINISH & SPEC. NO.			

MS-1997 F