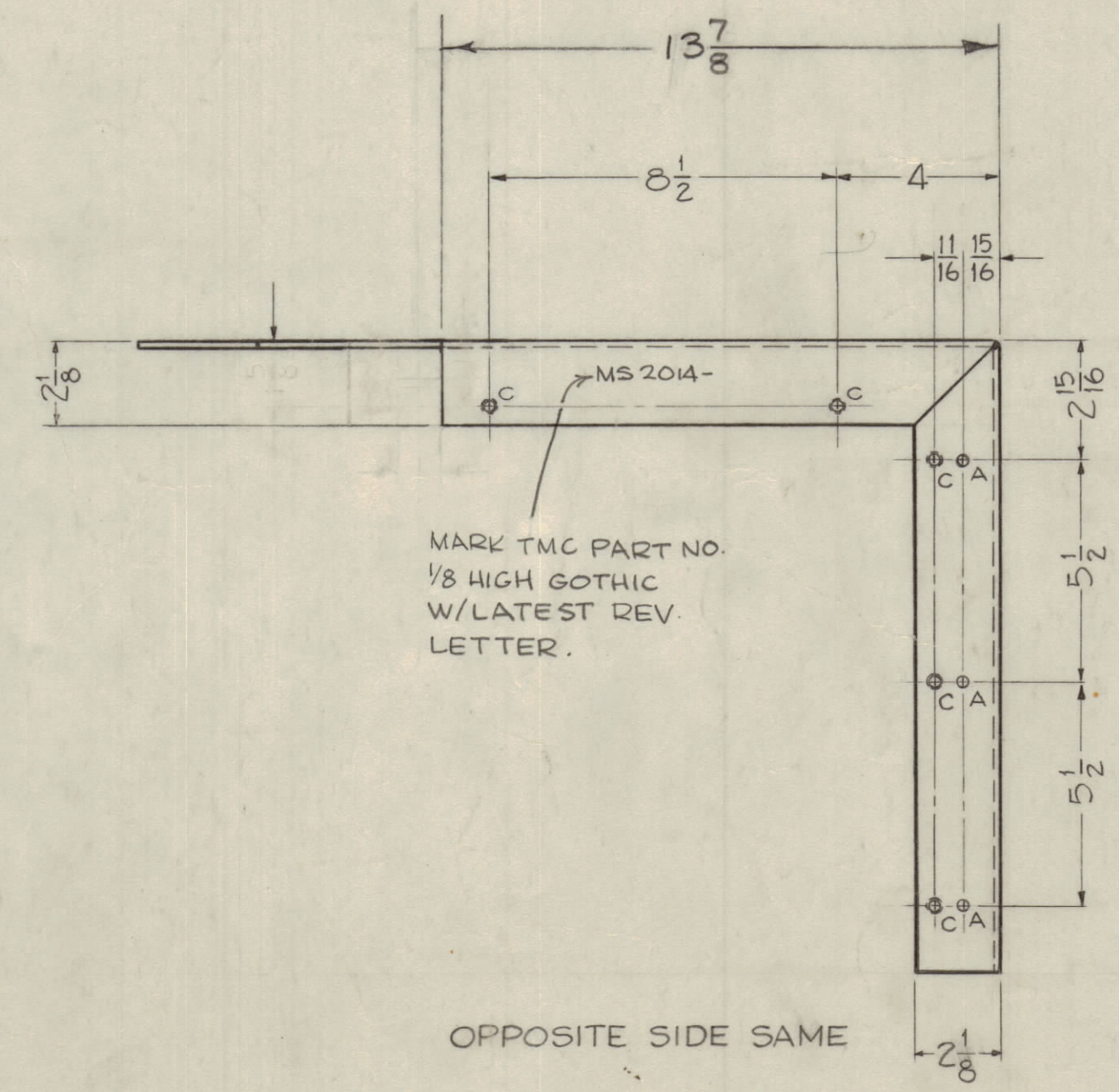
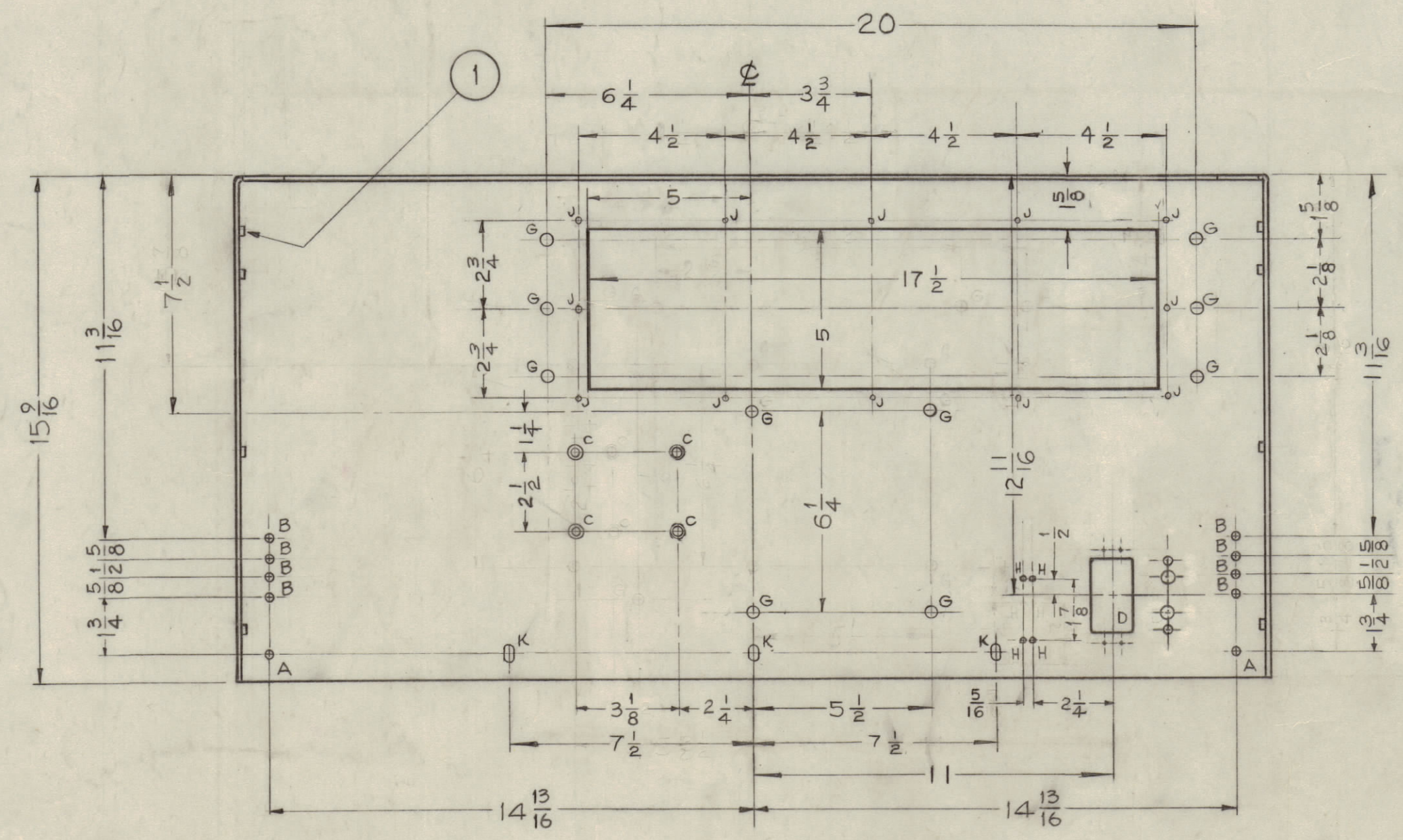
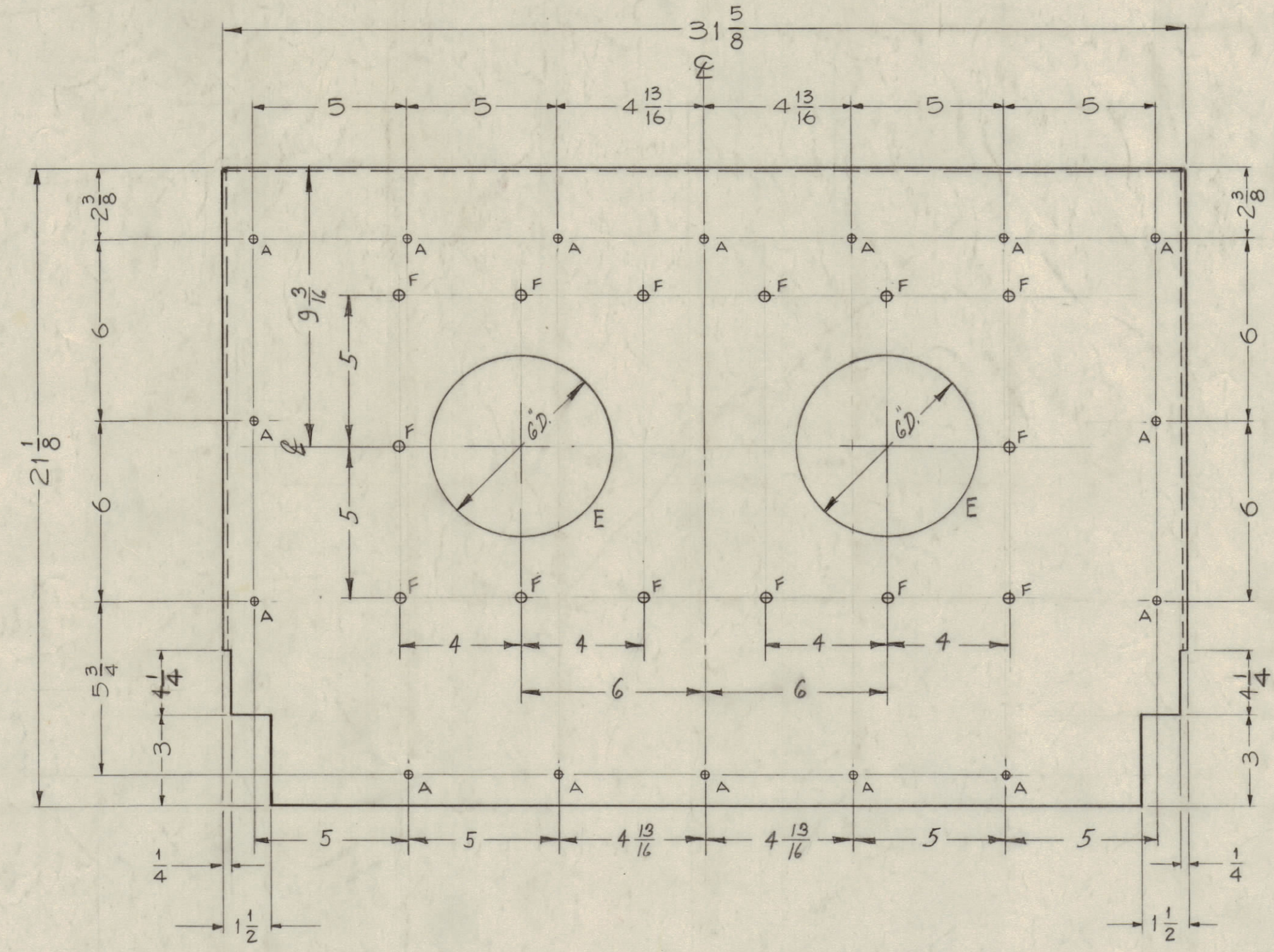


IF IT IS FOUND DESIRABLE TO CHANGE ANY TOLERANCE OR OTHER DETAIL SPECIFIED ON THIS DRAWING NOTIFY THE PURCHASER PROMPTLY.  
 MAXIMUM ALLOWABLE TOLERANCES HAVE BEEN DETERMINED AND DEVIATIONS WILL BE CAUSE FOR REJECTION. REMOVE ALL BURRS AND SHARP EDGES

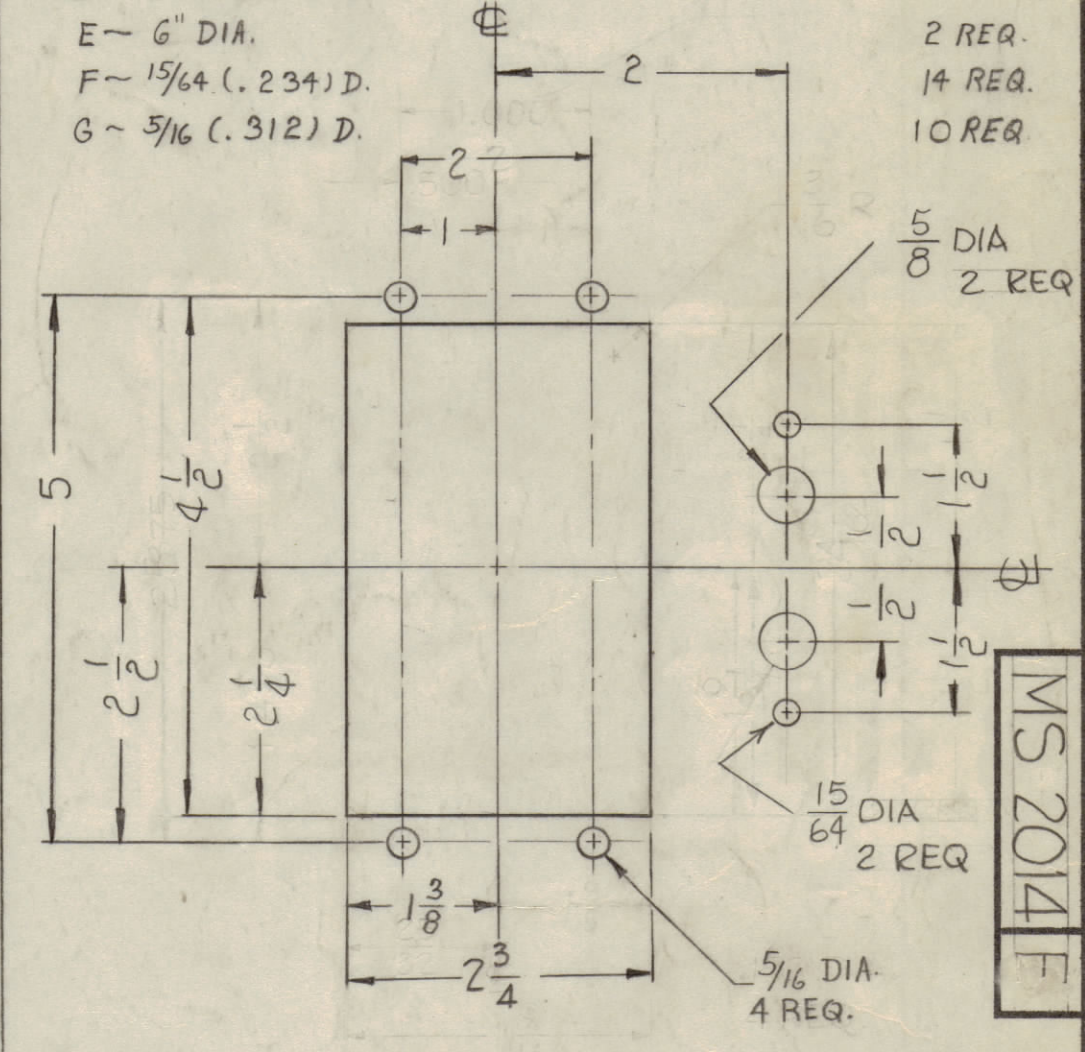
NOTICE TO PERSONS RECEIVING THIS DRAWING

THE TECHNICAL MATERIEL CORPORATION claims proprietary right in the material disclosed hereon. This drawing is issued in confidence for engineering information only and may not be reproduced or used to manufacture anything shown hereon without permission from THE TECHNICAL MATERIEL CORPORATION to the user. This drawing is loaned for mutual assistance and is subject to recall at any time.

Property of:  
 THE TECHNICAL MATERIEL CORPORATION  
 MAMARONECK, NEW YORK



- HOLES ~
- A ~ 13/64 (.203) DIA. RIVET HOLES AS PER MFG. REQ. 24 REQ.
  - B ~ 13/64 (.203) DIA. 8 REQ.
  - C ~ .224 DIA. MAX., .221 DIA. MIN. FOR NT129-8-32-6 14 REQ.
  - D - SEE DETAIL 2 REQ.
  - E - 6" DIA. 14 REQ.
  - F - 15/64 (.234) D. 10 REQ.
  - G - 5/16 (.312) D.



- H 1/8 DIA. HOLES 4 REQ.
- J 1/8 DIA. HOLES 12 REQ.
- K 13/64 X 13/32 SLOT 3 REQ.

NOTE - ALL BEND RADII 1/8"

F	2" 15/64 & 2" 5/8 ADDED TO DET. D. TMC NO. ADDED.	6.226	11452	WHO	gcb	DB	
E	4 1-5/8" DIM WAS 2"	6.15/60	2500	J.C.B.	gcb	DB	
D	6 (4) NT-129-8-32-6 ADDED	6.1/60	2423	gcb	gcb	DB	
C	2 RELOCATE 2 (G) HOLES ADDED FOUR (H) HOLES	8.9/60	2243	gcb	gcb	DB	
B	1 9 3/8 WAS 11 3/8	4.20/60	2141	gcb	gcb	DB	
A	3 TWO (G) HOLES ADDED						
	2 13 3/4 WAS 14 3/16						
	1 4 1/2 WAS 2 1/8		1975	gcb	gcb	DB	
ISSUE	ITEM	CHANGED FROM	DATE	CH. NO.	DRAFTS	CHECKER	ENG. APP.
TOLERANCES		SCALE: 1/4 (DO NOT SCALE)					
ALL OTHERS	DEC. DIM. ±	DRILL, PUNCH, COMMERCIAL STOCK SIZES AND MANUFACTURERS TOLERANCES ARE NOT INCLUDED.					
	FRAC. DIM. ± 1/64						
	ANGULAR DIM. ±						

J	AT-101	GPT 40K	2-9-60
REQ PER UNIT	MODEL	PROJECT NO.	DATE
		ASSY. NO.	
	USED ON		

14	1	NT129-832-6	NUT, ROUND, SWAGE TYPE
REQ. ITEM	PART NO.	DESCRIPTION	SYMBOL
1/8 THICK		THE TECHNICAL MATERIEL CORP. MAMARONECK, NEW YORK	
ALUMINUM		SHIELD, ANT. TUNER	
5052 - H32		John C. Biele	
TYPE & TEMPER		DRAWN	
HEAT TREAT. SPEC.		ELEC. DES. APP.	
5404 - IRIDITE		MECH. DES. APP.	
FINISH & SPEC. NO.		CHECKED	
		FINAL APPROVAL	
		MS 2014 F	