

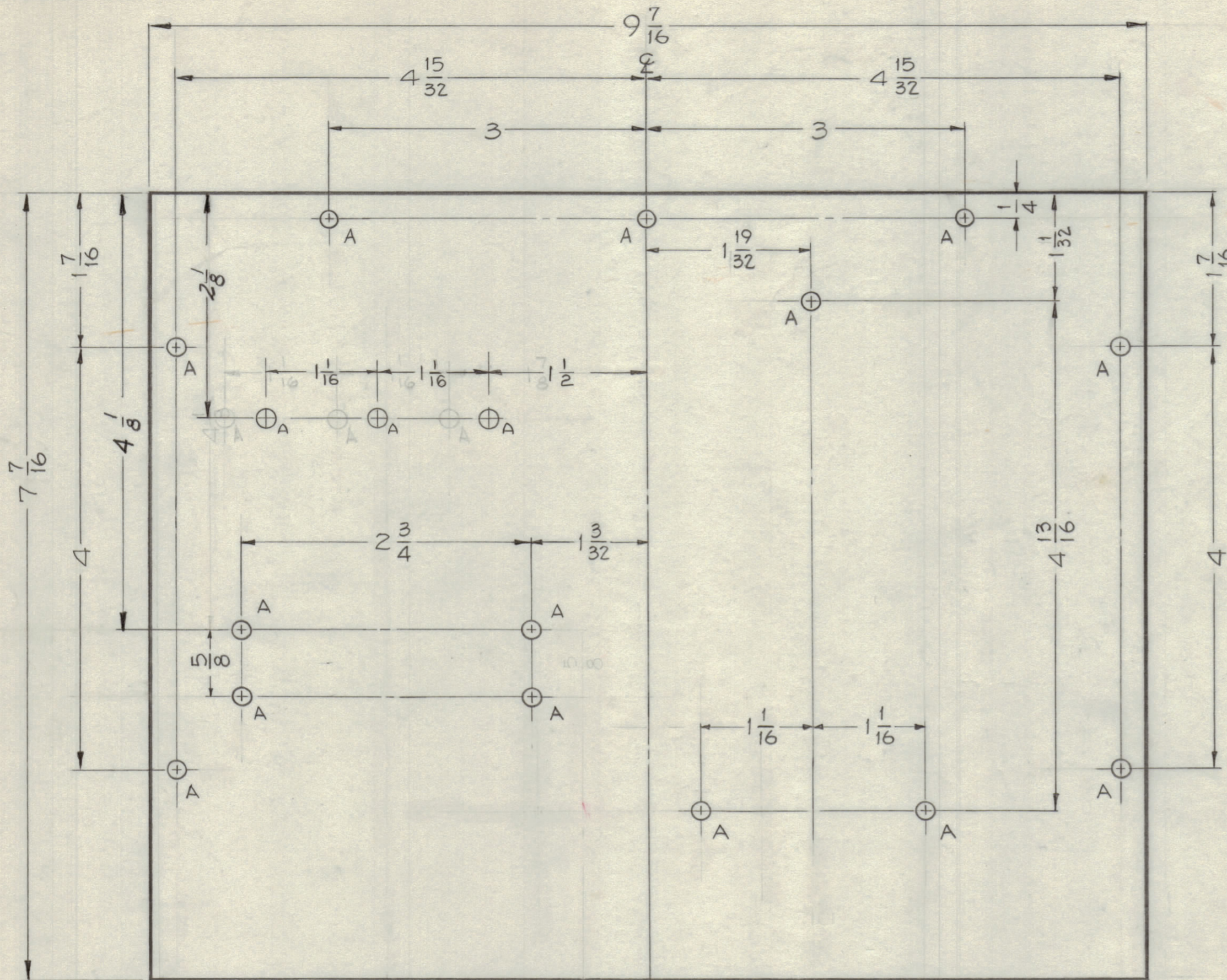
IF IT IS FOUND DESIRABLE TO CHANGE ANY TOLERANCE OR OTHER DETAIL SPECIFIED ON THIS DRAWING NOTIFY THE PURCHASER PROMPTLY.

MAXIMUM ALLOWABLE TOLERANCES HAVE BEEN DETERMINED AND DEVIATIONS WILL BE CAUSE FOR REJECTION. REMOVE ALL BURRS AND SHARP EDGES.

NOTICE TO PERSONS RECEIVING THIS DRAWING

THE TECHNICAL MATERIEL CORPORATION claims proprietary right in the material disclosed hereon. This drawing is issued in confidence for engineering information only and may not be reproduced or used to manufacture anything shown hereon without permission from THE TECHNICAL MATERIEL CORPORATION to the user. This drawing is loaned for mutual assistance and is subject to recall at any time.

Property of:
 THE TECHNICAL MATERIEL CORPORATION
 MAMARONECK, NEW YORK



MS-2024 B

HOLES ~
 A ~ 11/64 (.171) DIA. 17 REQ.

UNLESS OTHERWISE SPECIFIED
 DIMENSIONS ARE IN INCHES AND INCLUDE
 CHEMICALLY APPLIED OR PLATED FINISHES

TOLERANCES

DECIMALS .2 ± .05 .XX ± .01 .XXX ± .005	FRACTIONS ± 1/64 ANGLES ± 0° 30'
--	---

CUT HERE GUARANTEED 2-48

ISSUE	ITEM	CHANGED FROM	DATE	CH. NO.	DRAFTS	CHECKER	ENG. APP.
B	1	1 1/2 DIM. WAS 1 3/8 DIM.	6-30-60	2554	MS	JCB	QB
A	1	ADDED '3" (A) HOLE	5-17-60	2292	RL	JCB	vc

SCALE: FULL (DO NOT SCALE)

ALL OTHERS	DEC. DIM. ±	DRILL, PUNCH, COMMERCIAL STOCK SIZES AND MANUFACTURERS TOLERANCES ARE NOT INCLUDED.
	FRAC. DIM. ± 1/64	
	ANGULAR DIM. ±	

REF. LD-754

REQ.	ITEM	PART NO.	DESCRIPTION	SYMBOL
		081	THE TECHNICAL MATERIEL CORP. MAMARONECK, NEW YORK	
		ALUMINUM	COVER, REAR END	
		5052-H-32	BLOWER CONTACTOR	
			John C. Biele	En
			DRAWN	ELEC. DES. APP. MECH. DES. APP.
			1/20	QB
			CHECKED	FINAL APPROVAL
				MS-2024 B

1	AP-102	GPT 40K	2-11-60
REQ. PER UNIT	MODEL	PROJECT NO.	DATE
	ASSY. NO.		
	USED ON		