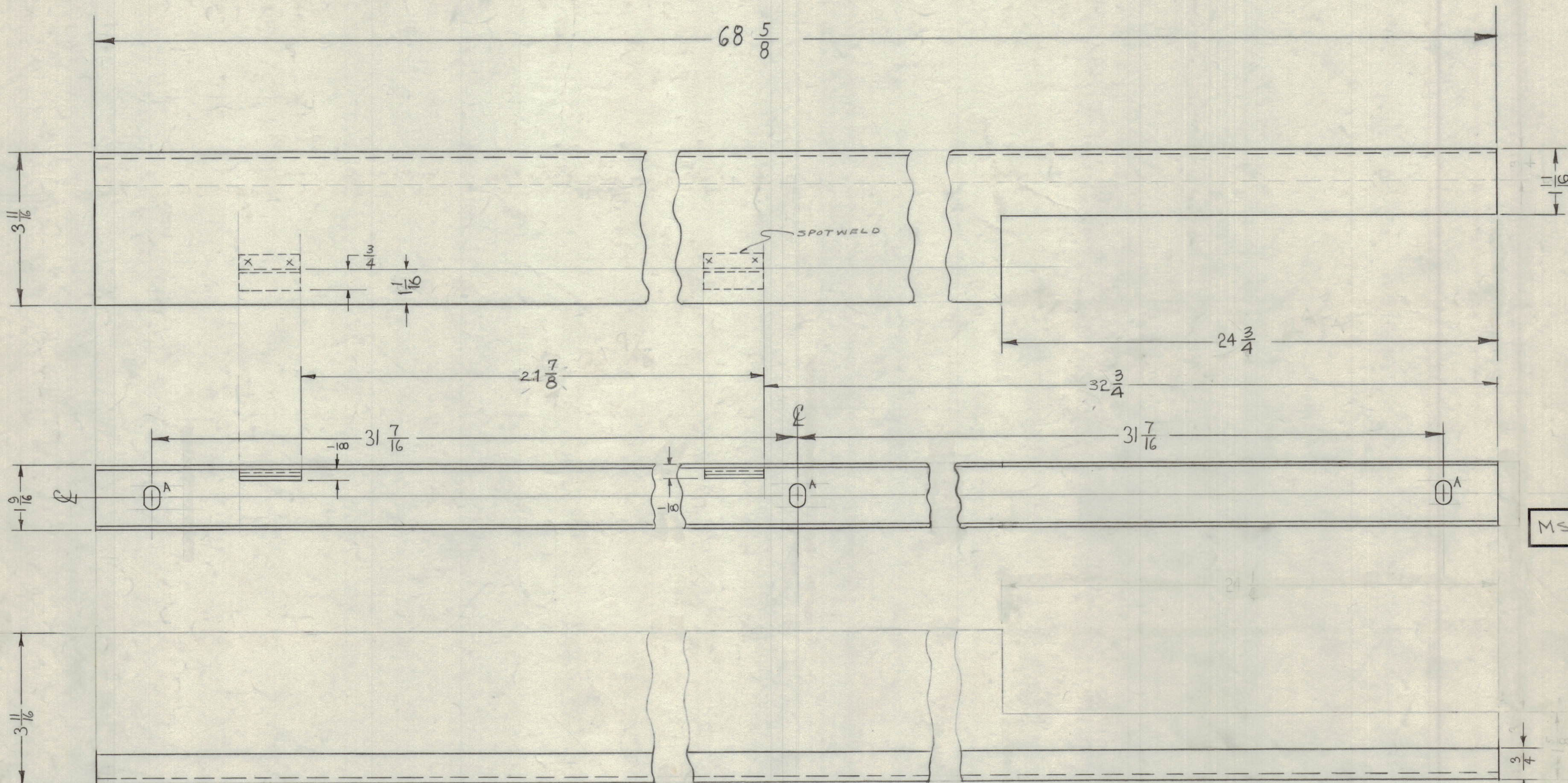


IF IT IS FOUND DESIRABLE TO CHANGE ANY TOLERANCE OR OTHER DETAIL SPECIFIED ON THIS DRAWING NOTIFY THE PURCHASER PROMPTLY.

MAXIMUM ALLOWABLE TOLERANCES HAVE BEEN DETERMINED AND DEVIATIONS WILL BE CAUSE FOR REJECTION. REMOVE ALL BURRS AND SHARP EDGES.

A \sphericalangle 1/4 X 3/16 SLOT - 3 REQ.

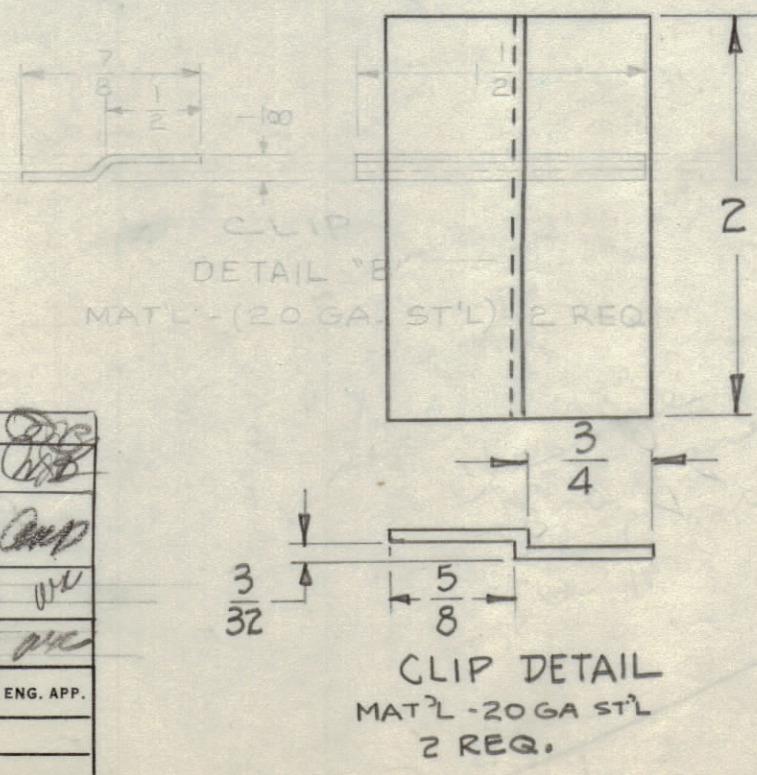


MS-2025 E

UNLESS OTHERWISE SPECIFIED DIMENSIONS ARE IN INCHES AND INCLUDE CHEMICALLY APPLIED OR PLATED FINISHES

DECIMALS	FRACTIONS	TOLERANCES
.X ± .05	± 1/64	
.XX ± .01	ANGLES	
.XXX ± .005	± 0° 30'	

MS-2025-1	MS-2025-2
FINISH - S371 DEGREASING OF PLAIN STEEL PARTS S114 ZINC CHROMATE PRIMER } FRONT & S521 TEXTURED GRAY ENAMEL } EDGES ONLY.	S520 BLUE GRAY TEXTURED VINYL



ISSUE	ITEM	CHANGED FROM	DATE	CH. NO.	DRAFTS	CHECKER	ENG. APP.
E		FINISH S521 WAS S115	5-31-66	16237	WGA	QTS	[Signature]
D	1	FINISH REVISED	1/4/69	10679	[Signature]	[Signature]	[Signature]
C	2	Relocate trim strip	6-11-60	2471	[Signature]	[Signature]	[Signature]
	1	24 3/4 NOTCH WAS 2 1/2					
B	2	ADD 'A' \sphericalangle 1/4 X 3/16 SLOT, ERROR	4-27-60	2192	[Signature]	[Signature]	[Signature]
	1	ADD DETAIL 'B'					
A	1	1-11/16 WAS 1-5/8	3-16-66		[Signature]	[Signature]	[Signature]

TOLERANCES		SCALE: 1/2
ALL OTHERS	DEC. DIM. ± FRAC. DIM. ± 1/64 ANGULAR DIM. ±	DRILL, PUNCH, COMMERCIAL STOCK SIZES AND MANUFACTURERS TOLERANCES ARE NOT INCLUDED.

1	AX-213	GPT-40K		2-8-60
REQ. PER UNIT	MODEL	PROJECT NO.	ASSY. NO.	DATE

REQ. ITEM	PART NO.	DESCRIPTION	SYMBOL
	20 GAUGE	THE TECHNICAL MATERIEL CORP. MAMARONECK, NEW YORK	
	STEEL	TRIM FRONT, RIGHT SIDE	
	MILD	PS FRAME	
	TYPE & TEMPER	DRAWN [Signature]	ELEC. DES. APP. [Signature]
	HEAT TREAT. SPEC.	CHECKED [Signature]	MECH. DES. APP. [Signature]
	SEE NOTE		FINAL APPROVAL [Signature]
	FINISH & SPEC. NO.		MS-2025 E