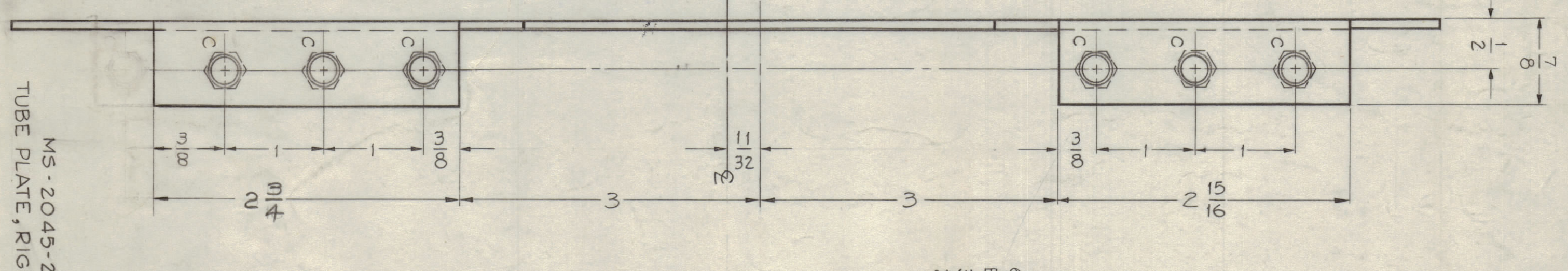
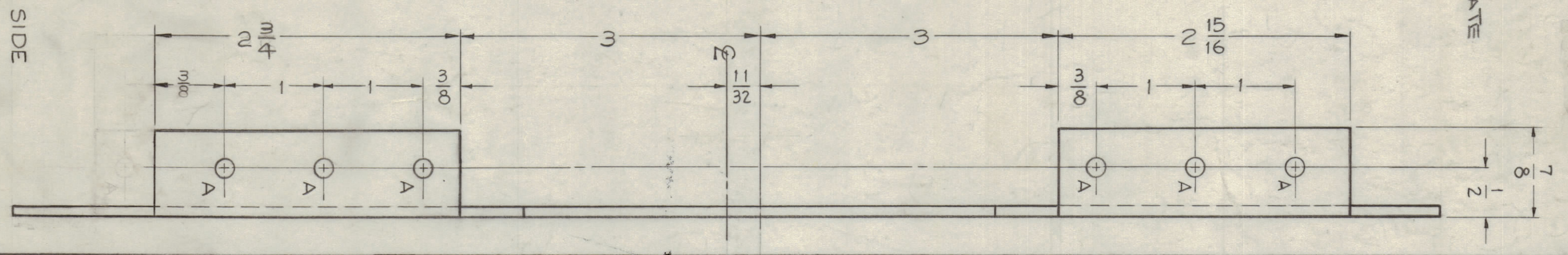


.030 MIN. BRASS MESH SOLDERED TO TOP OF PLATE AS SHOWN.

6 A HOLES EQUALLY SPACED 30° APART ON A 2 5/8" R.

MS-2045-1
TUBE PLATE, LEFT SIDE

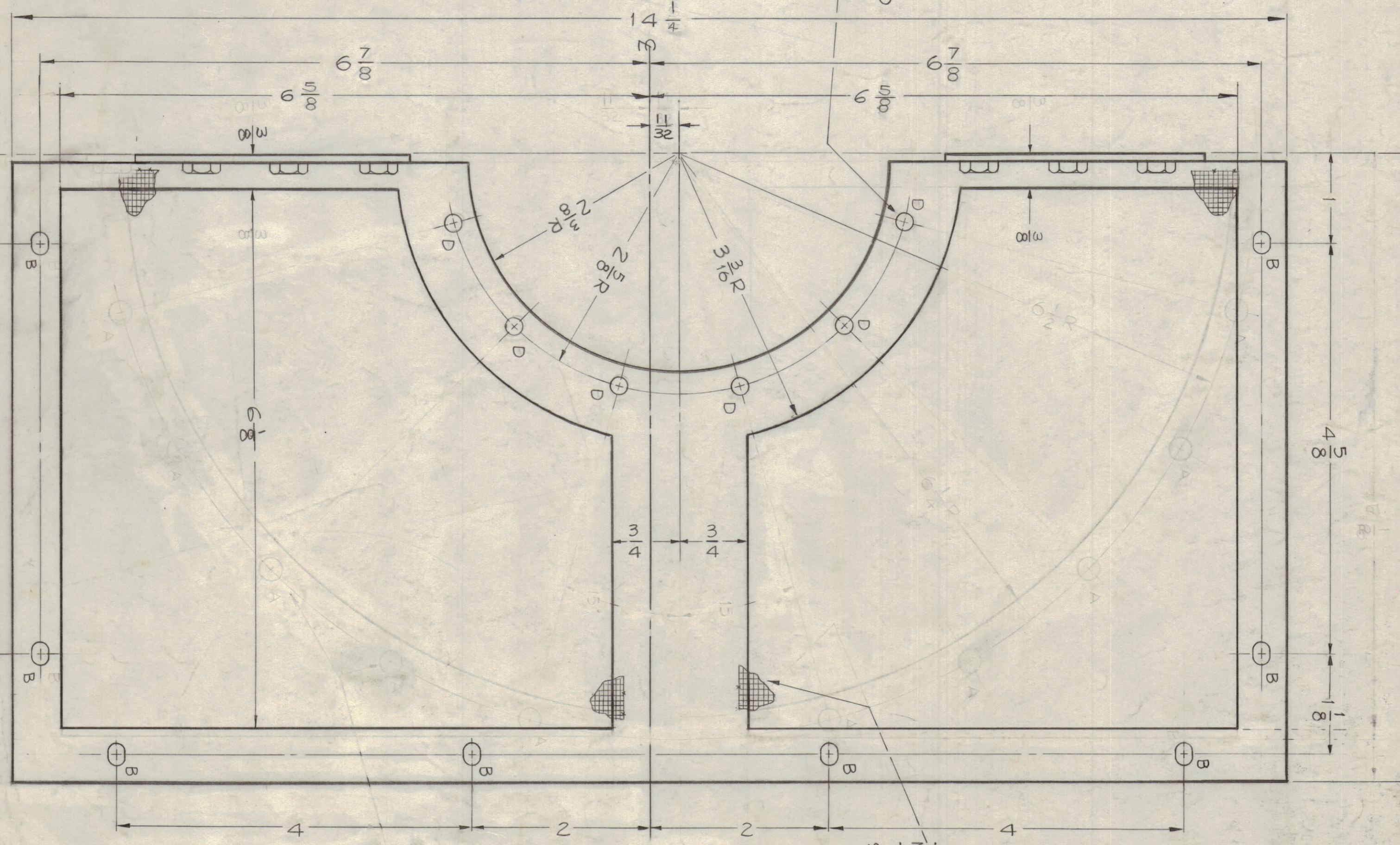
MATERIAL - BRASS, .081 THICK
TYPE & TEMPER - FREE MACHINING
FINISH - GOOD FLUENT



6 D HOLES EQUALLY SPACED 30° APART ON A 2 5/8" R.

MS-2045-2
TUBE PLATE, RIGHT SIDE

MATERIAL - BRASS, .081 THICK
TYPE & TEMPER - FREE MACHINING
FINISH - GOOD FLUENT



.030 MIN. BRASS MESH SOLDERED TO TOP OF PLATE AS SHOWN.

6 D HOLES EQUALLY SPACED 30° APART ON A 2 5/8" R.

MS-2045 F
TUBE PLATE, LEFT & RIGHT SIDES

MATERIAL - BRASS, .081 THICK
TYPE & TEMPER - FREE MACHINING
FINISH - GOOD FLUENT

- HOLES -
- A ~ 3/16 (1.87) DIA. 12 REQ.
 - B ~ 1/4 (1.25) DIA. 10 REQ.
 - C ~ 3/16 X 1/4 SLOTS 4 REQ.

- HOLES -
- A ~ 1/4 (1.25) DIA. 10 REQ.
 - B ~ 3/16 X 1/4 SLOTS 8 REQ.
 - C ~ 3/16 X 1/4 SLOTS 6 REQ. (FOR SM 107-3-4)

* NOTE: USED ON MS 2045-2 ONLY

* SM 107-3-4 INSERT, HEXAGON

REV	DESCRIPTION	DATE	BY	CHK
E	REVISED MATERIAL TYPE	1/16/61	SOB	WFB
D	REVISED MATERIAL TYPE	1/16/61	SOB	WFB
C	REVISED MATERIAL TYPE	1/16/61	SOB	WFB
B	REVISED MATERIAL TYPE	1/16/61	SOB	WFB
A	REVISED MATERIAL TYPE	1/16/61	SOB	WFB

UNLESS OTHERWISE SPECIFIED DIMENSIONS ARE IN INCHES AND INCLUDE DECIMALS AND FRACTIONS TO THE TENTH PLACE. TOLERANCES ARE AS SHOWN.

TECH	AX 209	GPT 40K	2-17-60
MS-2045 F			

REV	DESCRIPTION	DATE	BY	CHK
6	SM 107-3-4 INSERT, HEXAGON			
5	BRASS			
4	FREE MACHINING			