

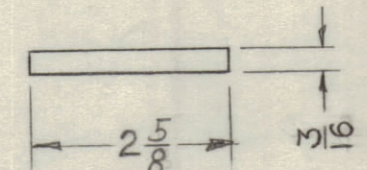
IF IT IS FOUND DESIRABLE TO CHANGE ANY TOLERANCE OR OTHER DETAIL SPECIFIED ON THIS DRAWING NOTIFY THE PURCHASER PROMPTLY.

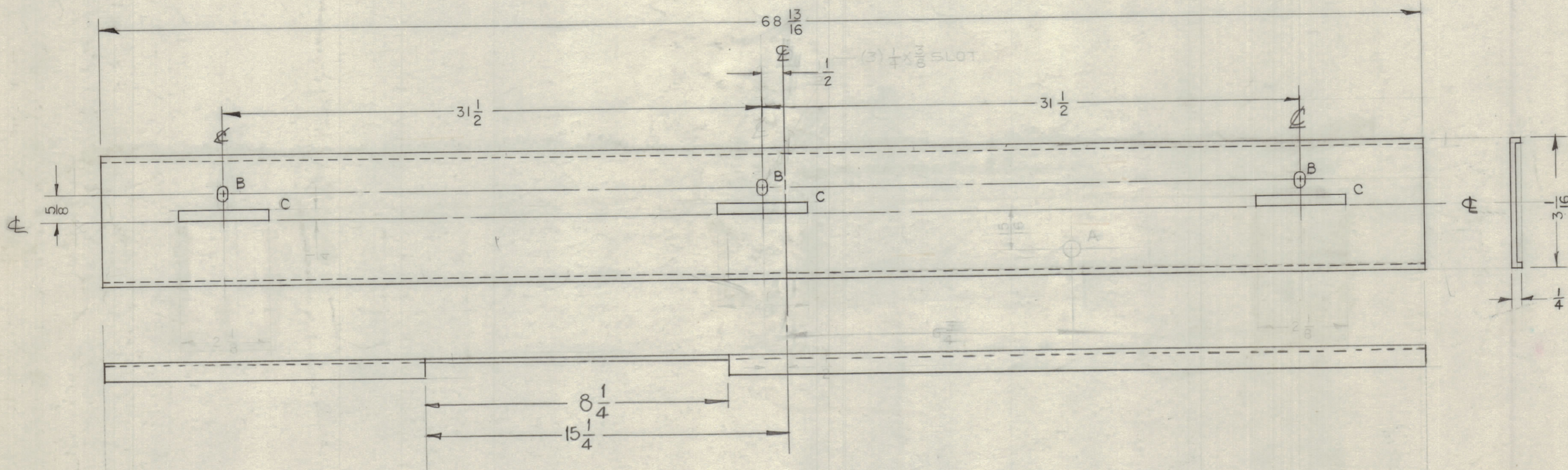
MAXIMUM ALLOWABLE TOLERANCES HAVE BEEN DETERMINED AND DEVIATIONS WILL BE CAUSE FOR REJECTION. REMOVE ALL BURRS AND SHARP EDGES.

NOTICE TO PERSONS RECEIVING THIS DRAWING

THE TECHNICAL MATERIEL CORPORATION claims proprietary right in the material disclosed hereon. This drawing is issued in confidence for engineering information only and may not be reproduced or used to manufacture anything shown hereon without permission from THE TECHNICAL MATERIEL CORPORATION to the user. This drawing is loaned for mutual assistance and is subject to recall at any time.

Property of:
THE TECHNICAL MATERIEL CORPORATION
MAMARONECK, NEW YORK

- A ~ 3/8 D 1 REQ.
- B ~ 1/4 X 3/8 SLOT 3 REQ.
- C ~  3 REQ.



MS-2051 E

UNLESS OTHERWISE SPECIFIED DIMENSIONS ARE IN INCHES AND INCLUDE CHEMICALLY APPLIED OR PLATED FINISHES

DECIMALS	FRACTIONS
.X ± .05	± 1/64
.XX ± .01	ANGLES ± 30'
.XXX ± .005	

CUT HERE GUARANTEED 2.05

S 371 DEGREASING PLAIN STEEL PARTS
S 114 ZINC CHROMATE PRIMER
S 521 TEXTURED GRAY ENAMEL

ISSUE	ITEM	CHANGED FROM	DATE	CH. NO.	DRAFTS	CHECKER	ENG. APP.
E		FINISH "S521" WAS "S115"	3-31-60	16237			
D	1	8 1/2 cutout added	9/13/60	2476	DM		
C	1	2 Relocated, Moved in error	5/25/60	2372	JCB		
B	1	DELETED "A" HOLE	4/24/60	2190	CS		
A	1	3/16 WAS 1/4	3-16-60		CS		

TOLERANCES		SCALE:
ALL DEC. DIM. ±	FRAC. DIM. ± 1/64	DRILL, PUNCH, COMMERCIAL STOCK SIZES AND MANUFACTURERS TOLERANCES ARE NOT INCLUDED.
OTHERS	ANGULAR DIM. ±	

1	GPT-40K	AX-214	2/17/60
REQ. PER UNIT	MODEL	PROJECT NO.	DATE

REQ. ITEM	PART NO.	DESCRIPTION	SYMBOL
	20 GA	THE TECHNICAL MATERIEL CORP. MAMARONECK, NEW YORK	
	STEEL	TRIM, RIGHT SIDE	
	MILD	RA. FRAME (REAR)	
	TYPE & TEMPER	DRAWN: [Signature] ELEC. DES. APP. [Signature] MECH. DES. APP. [Signature]	
	HEAT TREAT. SPEC.	CHECKED: [Signature] FINAL APPROVAL: [Signature]	
	SEE NOTE:		
	FINISH & SPEC. NO.		MS-2051 E