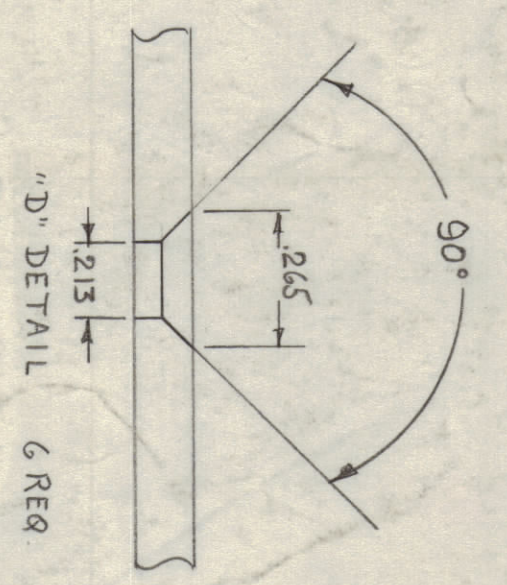
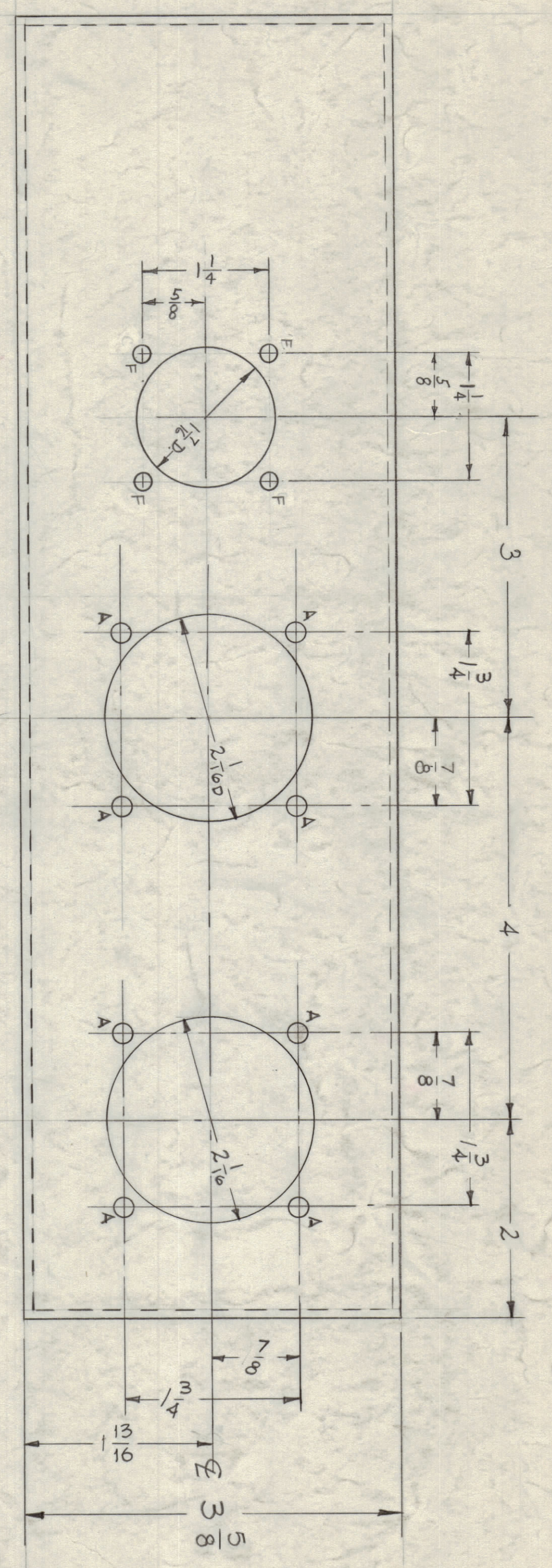
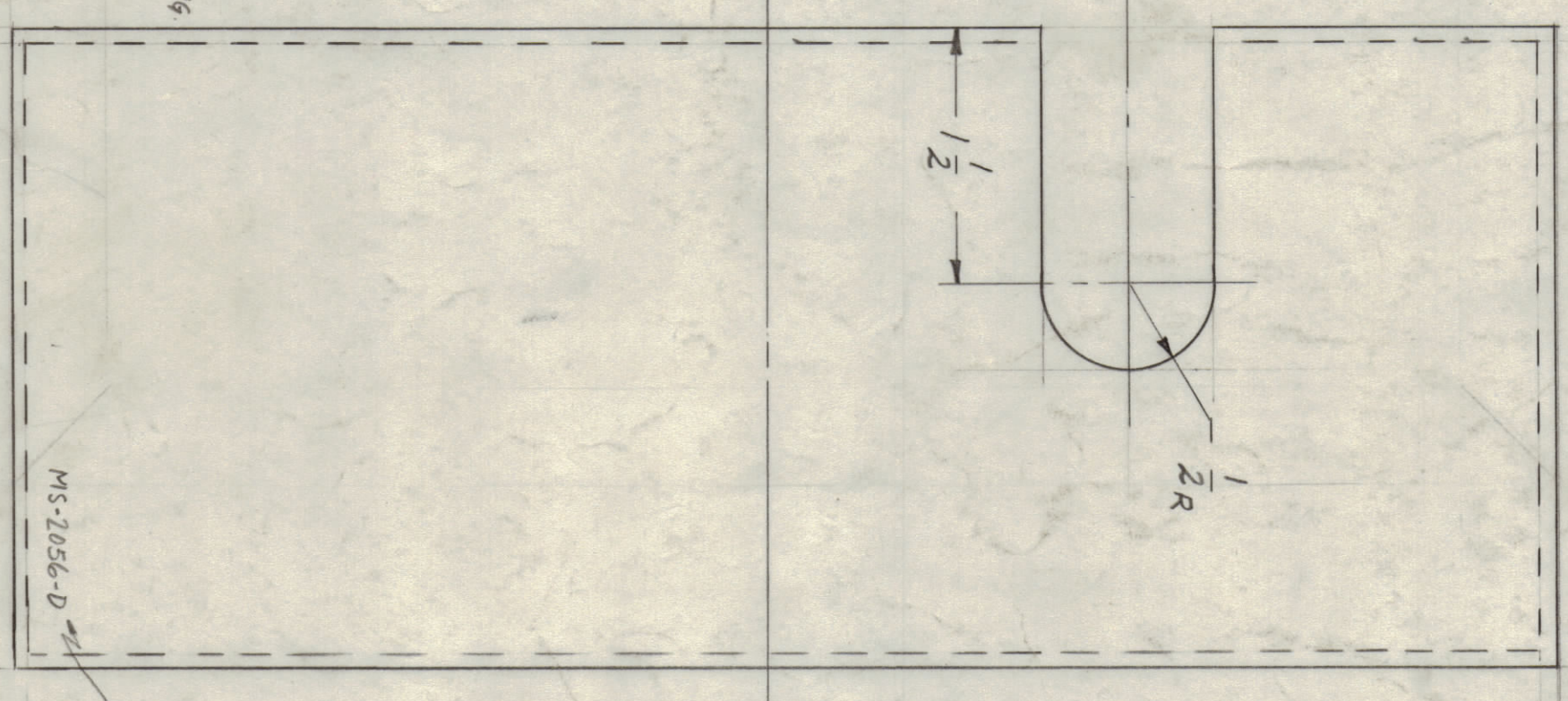
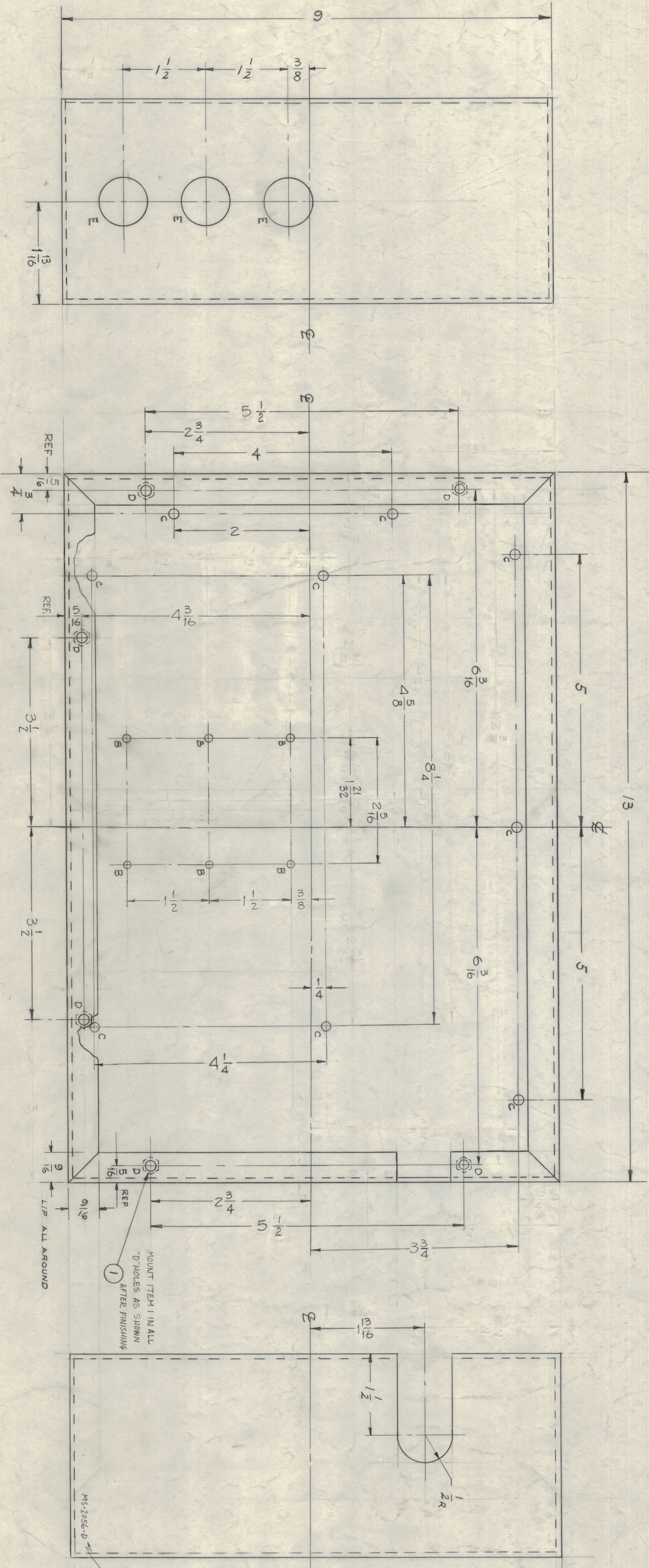


NOTICE TO PERSONS RECEIVING THIS DRAWING  
 THE TECHNICAL MATERIAL CORPORATION claims  
 property right in the material disclosed herein.  
 This drawing is issued in confidence for engineering  
 information only and may not be reproduced or used  
 to manufacture anything shown herein without per-  
 mission from THE TECHNICAL MATERIAL CORPORA-  
 TION in the U.S. This drawing is issued for mutual  
 assistance and is subject to recall at any time.  
 Property of:  
 THE TECHNICAL MATERIAL CORPORATION  
 MANHATTAN, NEW YORK



- A - 3/16 (.1875) D.
- B - 1/16 (.125) D.
- C - 3/64 (.203) D.
- D - SEE DETAIL
- E - 7/8 (.875) D.
- F - 1/8 DIA.



METAL STAMP TMC PART NO. MS-2056-D  
 1/8 HIGH GOTHIC

REF ~ TMC DWG NO. LD-768 (4)

NO.	DESCRIPTION	DATE	BY	CHKD.
1	AP-103			
2	GP-40K			
3	2-23-60			
4	S404-YEL/RID/TE			

UNLESS OTHERWISE SPECIFIED  
 DIMENSIONS ARE IN INCHES  
 DECIMALS ARE TO BE ROUNDED UP  
 FRACTIONS ARE TO BE ROUNDED UP  
 TOLERANCES ARE AS SHOWN  
 CUT HERE GUARANTEED FOR

NO.	DESCRIPTION	DATE	BY	CHKD.
1	AP-103			
2	GP-40K			
3	2-23-60			
4	S404-YEL/RID/TE			

6 1 15N-107-2-4 INSERT, HEX. (6-32)  
 ALUMINUM  
 BOX,  
 A.C. LINE FILTER  
 MS-2056-D

MS-2056 D