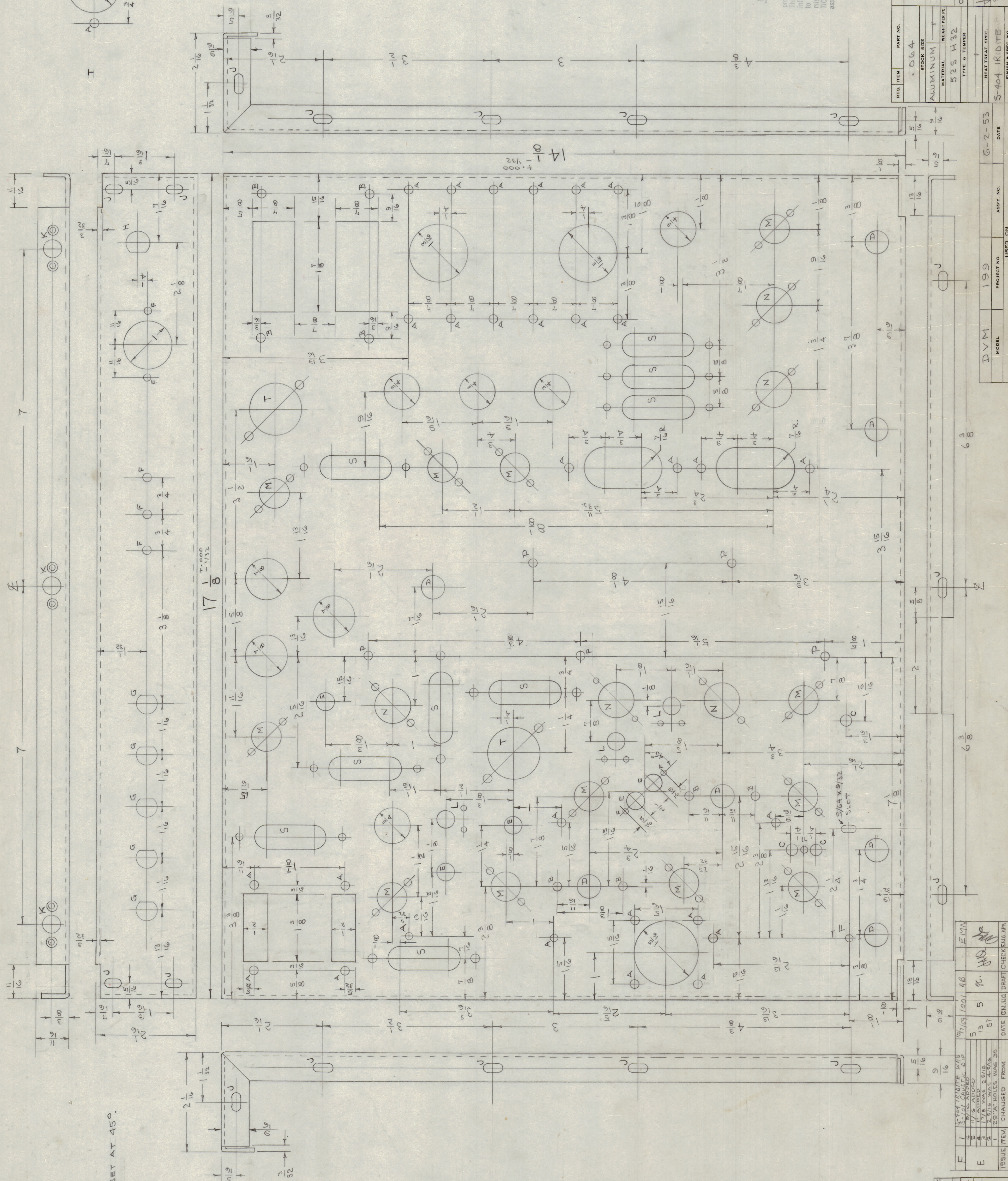
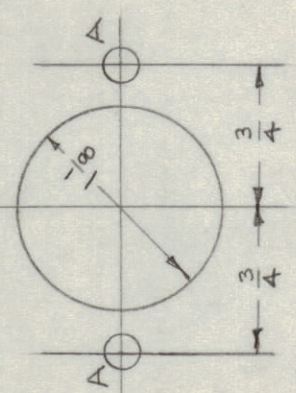
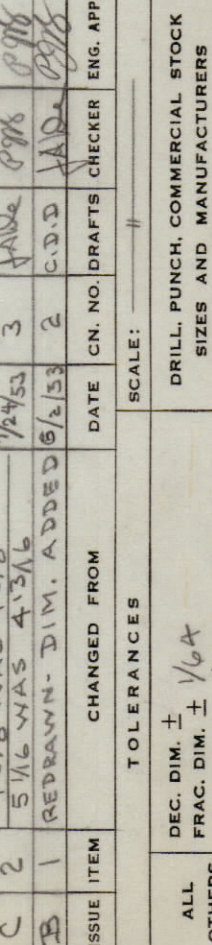
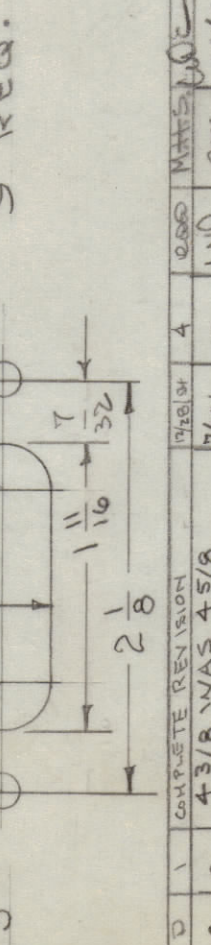
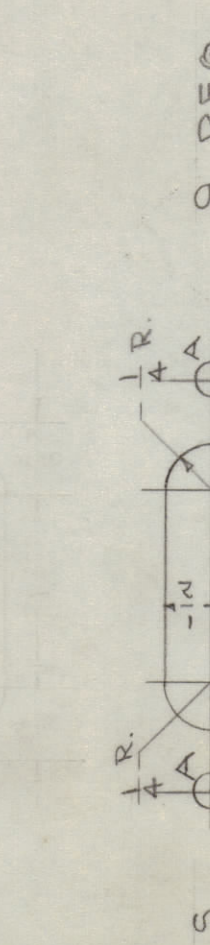
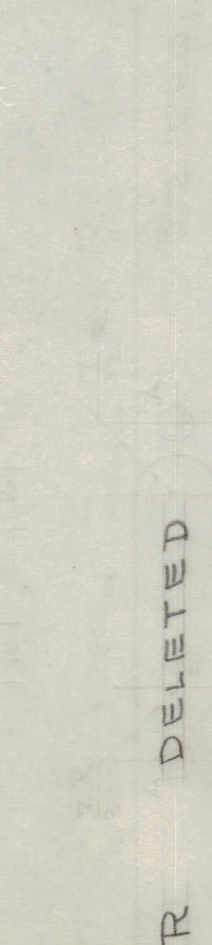
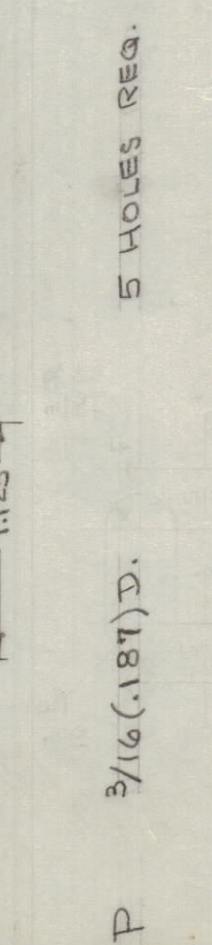
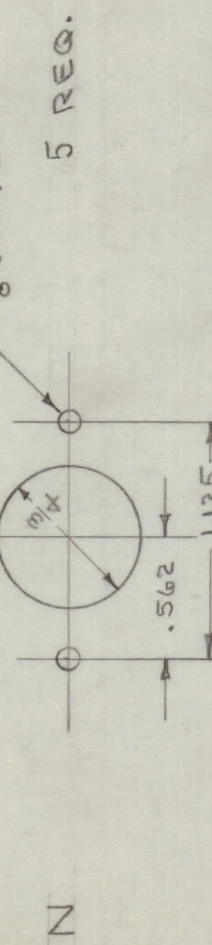
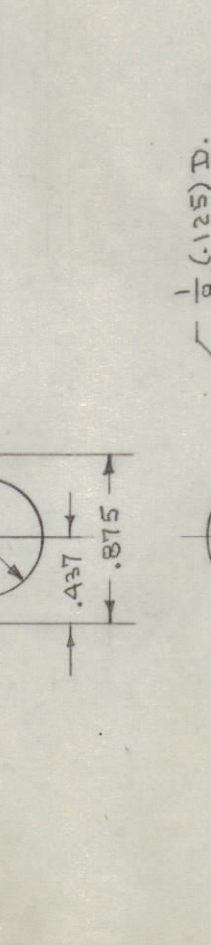
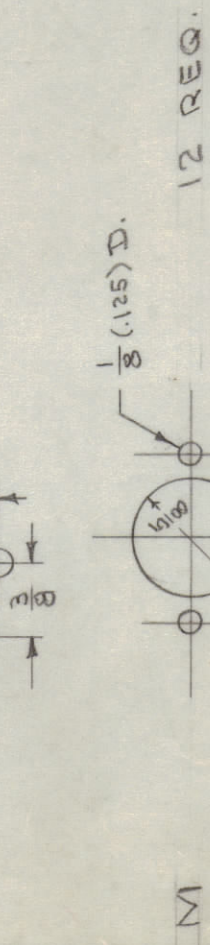
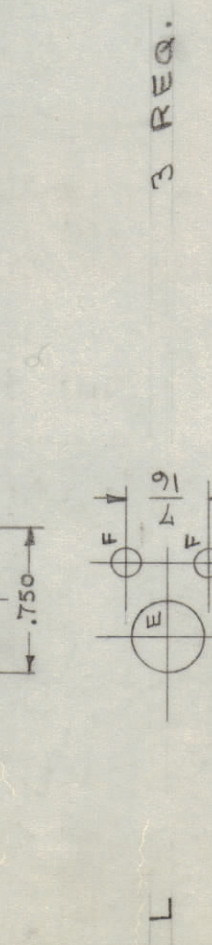
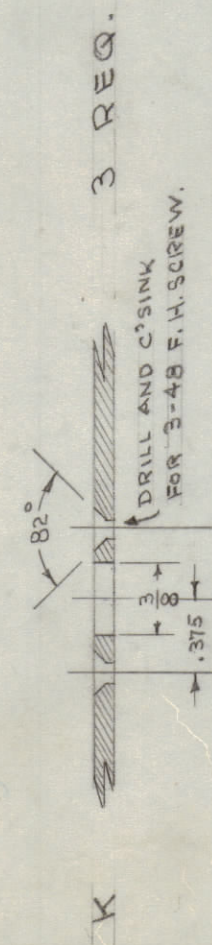
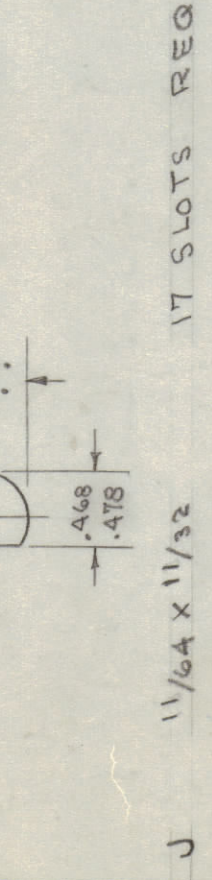
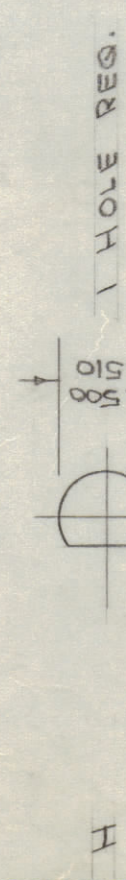


2 REQ.



NOTE: ALL TUBE SOCKET MTG. HOLES ARE SET AT 45°.

- A 11/64 (.172) D. 20 HOLES REQ.
- B 13/64 (.203) D. 8 HOLES REQ.
- C 1/4 (.250) D. 3 HOLES REQ.
- D 1/2 (.500) D. 7 HOLES REQ.
- E 3/8 (.375) D. 5 HOLES REQ.
- F 9/64 (.140) D. 9 HOLES REQ.
- G 5 HOLES REQ.



NOTICE TO PERSONS RECEIVING THIS DRAWING  
 THE TECHNICAL MATERIEL CORPORATION claims  
 proprietary right in the material disclosed herein.  
 This drawing is issued in confidence for engineering  
 information only and may not be reproduced or used  
 to manufacture anything shown herein without per-  
 mission from THE TECHNICAL MATERIEL CORPORA-  
 TION. This drawing is loaned for mutual  
 assistance and is subject to recall at any time.

Property of:  
 THE TECHNICAL MATERIEL CORPORATION  
 MAMARONECK, NEW YORK

REQ. ITEM	PART NO.	DESCRIPTION	SYMBOL
064		THE TECHNICAL MATERIEL CORP. MAMARONECK, NEW YORK	
	STOCK SIZE	MAIN CHASSIS	
	MATERIAL	ALUMINUM	
	WEIGHT	525 H 32	
	TYPE & TEMPER		
	HEAT TREAT. SPEC.		
	FINISH & SPEC. NO.		

DRWN	CDD 6-2-53	ELC. DEPT. APP.	MECH. USE APP.
CHECKED	HD		
SUPERSEDES	MS-252		
DMS 008			

DVM	199	PROJECT NO.	ASBY. NO.	DATE
MODEL				G-2-53
				USED ON

ISSUE ITEM	CHANGED FROM	DATE	CHANGED BY	DATE	CHANGED FROM
F	5-29-54 TIME WAS SLOT SIZES 1/16 ADDED	10/1/54	1001 AB	EMN	
E	1/16 HOLES WERE 29" HOLES WERE 30"	13	5	10	
		57			

ISSUE ITEM	CHANGED FROM	DATE	CHANGED BY	DATE	CHANGED FROM
D	1/16 HOLES WERE SLOT SIZES 1/16 ADDED	10/1/54	1001 AB	EMN	
C	1/16 HOLES WERE SLOT SIZES 1/16 ADDED	10/1/54	1001 AB	EMN	
B	1/16 HOLES WERE SLOT SIZES 1/16 ADDED	10/1/54	1001 AB	EMN	
A	1/16 HOLES WERE SLOT SIZES 1/16 ADDED	10/1/54	1001 AB	EMN	