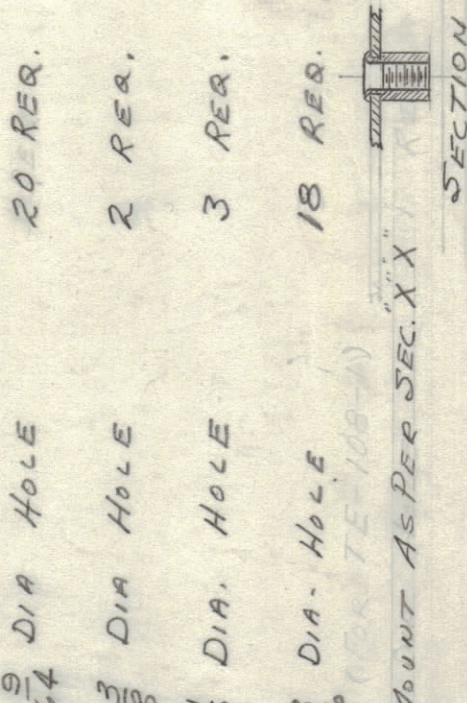
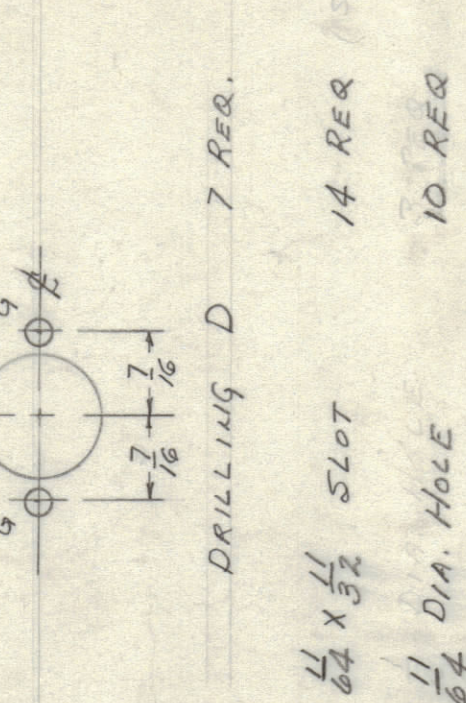
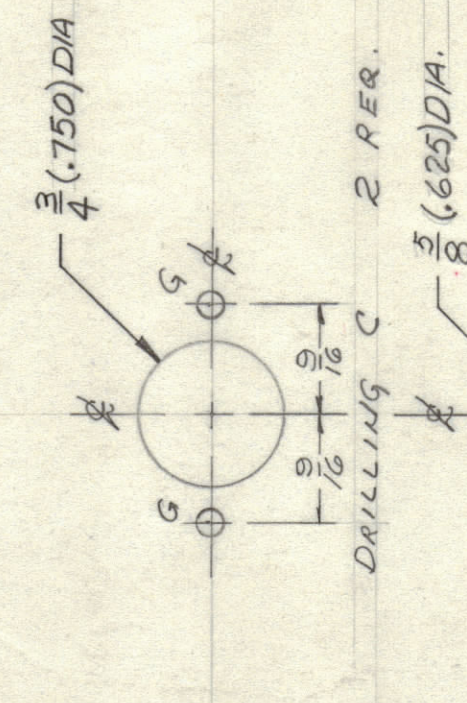
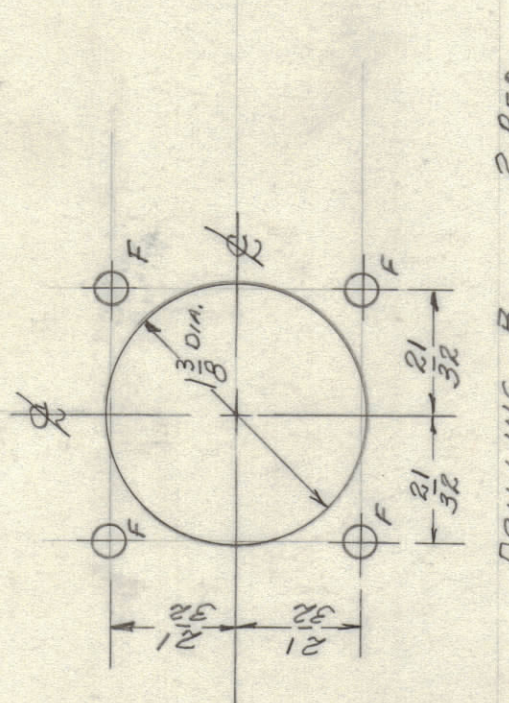
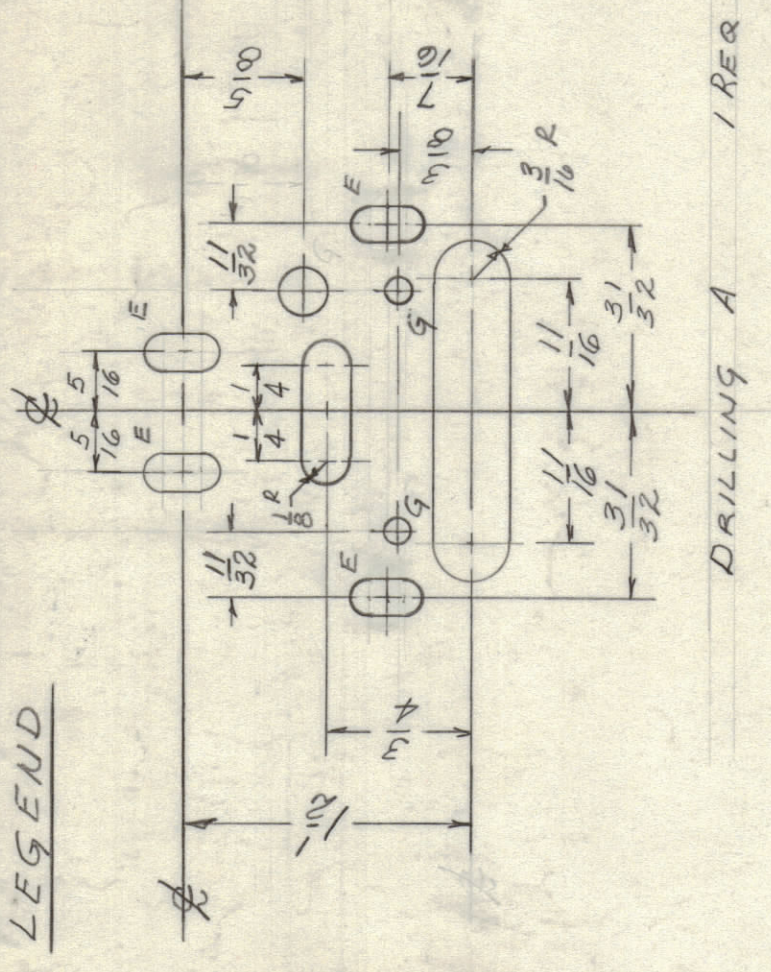


LEGEND

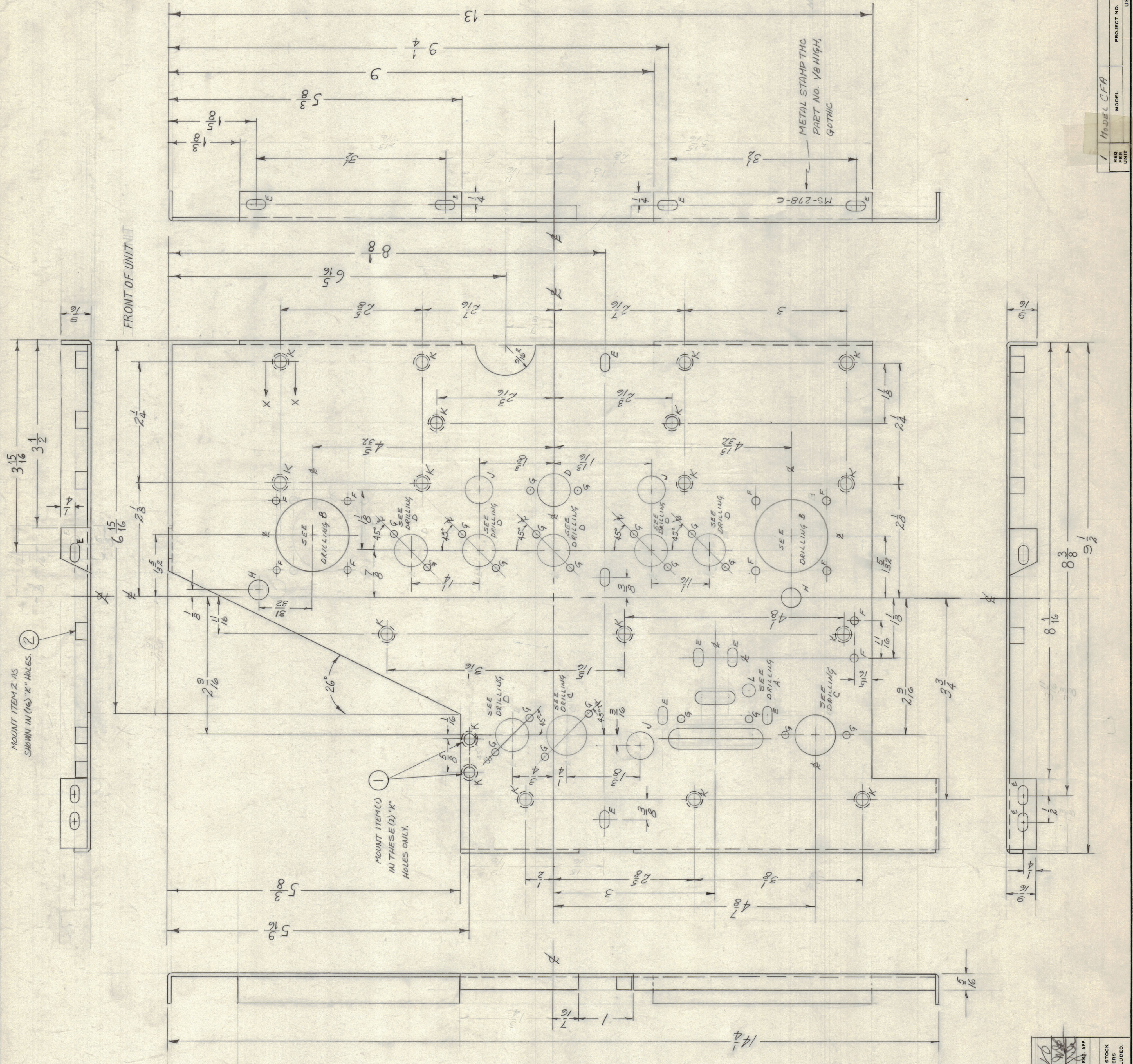


- E - 1/16 x 1/32 SLOT 14 REQ (SEE NOTE)
- F - 1/16 DIA. HOLE 10 REQ
- G - 3/16 DIA HOLE 20 REQ.
- H - 1/8 DIA HOLE 2 REQ.
- J - 1/4 DIA. HOLE 3 REQ.
- K - 3/16 DIA. HOLE 18 REQ. (SEE NOTE)

NOTE:
USE MATERIAL THICKNESS FOR MAX. RADIUS ON ALL BENDS
UNLESS OTHERWISE SPECIFIED.

REF: LD-411 (2)

REQ. NO.	ITEM	PART NO.	DESCRIPTION	SYMBOL
16	2	TE-108-1	STANDOFF, RIVET TYPE	K
2	1	TE-108-6	STANDOFF, RIVET TYPE	K
THE TECHNICAL MATERIEL CORP. MAMARONECK, NEW YORK				
CHAS S J S, CENTER				
MODEL CFA				
DRAWN BY: JMB				
CHECKED BY: JMB				
ELEC. DES. APP. MECH. DES. APP.				
HEAT TREAT. SPEC. VEL. DATE: 7-22-58 ND CH. 6				
FINISH & SPEC. NO. M5-278				



IF IT IS FOUND DESIRABLE TO CHANGE ANY TOLERANCE OR DIMENSION ON THIS DRAWING NOTIFY THE PURCHASER PROMPTLY.
MAXIMUM ALLOWABLE TOLERANCES HAVE BEEN DETERMINED AND DEVIATIONS WILL BE CAUSE FOR REJECTION.
REMOVE ALL BURRS AND SHARP EDGES

NOTICE TO PERSONS RECEIVING THIS DRAWING
THE TECHNICAL MATERIEL CORPORATION claims proprietary right in the material disclosed hereon. This drawing is issued in confidence for use or information only and may not be reprinted, copied, or used to manufacture anything without the written permission from THE TECHNICAL MATERIEL CORPORATION to the user. This permission is loaned for assistance and is subject to recall at any time.

Property of:
THE TECHNICAL MATERIEL CORPORATION
MAMARONECK, NEW YORK

REV. NO.	DATE	BY	CHKD.	APP.
1	8-13-58	JMB	JMB	JMB
2	10-1-58	JMB	JMB	JMB
3	10-1-58	JMB	JMB	JMB
4	10-1-58	JMB	JMB	JMB
5	10-1-58	JMB	JMB	JMB
6	10-1-58	JMB	JMB	JMB
7	10-1-58	JMB	JMB	JMB
8	10-1-58	JMB	JMB	JMB
9	10-1-58	JMB	JMB	JMB
10	10-1-58	JMB	JMB	JMB
11	10-1-58	JMB	JMB	JMB
12	10-1-58	JMB	JMB	JMB
13	10-1-58	JMB	JMB	JMB
14	10-1-58	JMB	JMB	JMB
15	10-1-58	JMB	JMB	JMB
16	10-1-58	JMB	JMB	JMB
17	10-1-58	JMB	JMB	JMB
18	10-1-58	JMB	JMB	JMB
19	10-1-58	JMB	JMB	JMB
20	10-1-58	JMB	JMB	JMB
21	10-1-58	JMB	JMB	JMB
22	10-1-58	JMB	JMB	JMB
23	10-1-58	JMB	JMB	JMB
24	10-1-58	JMB	JMB	JMB
25	10-1-58	JMB	JMB	JMB
26	10-1-58	JMB	JMB	JMB
27	10-1-58	JMB	JMB	JMB
28	10-1-58	JMB	JMB	JMB
29	10-1-58	JMB	JMB	JMB
30	10-1-58	JMB	JMB	JMB
31	10-1-58	JMB	JMB	JMB
32	10-1-58	JMB	JMB	JMB
33	10-1-58	JMB	JMB	JMB
34	10-1-58	JMB	JMB	JMB
35	10-1-58	JMB	JMB	JMB
36	10-1-58	JMB	JMB	JMB
37	10-1-58	JMB	JMB	JMB
38	10-1-58	JMB	JMB	JMB
39	10-1-58	JMB	JMB	JMB
40	10-1-58	JMB	JMB	JMB
41	10-1-58	JMB	JMB	JMB
42	10-1-58	JMB	JMB	JMB
43	10-1-58	JMB	JMB	JMB
44	10-1-58	JMB	JMB	JMB
45	10-1-58	JMB	JMB	JMB
46	10-1-58	JMB	JMB	JMB
47	10-1-58	JMB	JMB	JMB
48	10-1-58	JMB	JMB	JMB
49	10-1-58	JMB	JMB	JMB
50	10-1-58	JMB	JMB	JMB
51	10-1-58	JMB	JMB	JMB
52	10-1-58	JMB	JMB	JMB
53	10-1-58	JMB	JMB	JMB
54	10-1-58	JMB	JMB	JMB
55	10-1-58	JMB	JMB	JMB
56	10-1-58	JMB	JMB	JMB
57	10-1-58	JMB	JMB	JMB
58	10-1-58	JMB	JMB	JMB
59	10-1-58	JMB	JMB	JMB
60	10-1-58	JMB	JMB	JMB
61	10-1-58	JMB	JMB	JMB
62	10-1-58	JMB	JMB	JMB
63	10-1-58	JMB	JMB	JMB
64	10-1-58	JMB	JMB	JMB
65	10-1-58	JMB	JMB	JMB
66	10-1-58	JMB	JMB	JMB
67	10-1-58	JMB	JMB	JMB
68	10-1-58	JMB	JMB	JMB
69	10-1-58	JMB	JMB	JMB
70	10-1-58	JMB	JMB	JMB
71	10-1-58	JMB	JMB	JMB
72	10-1-58	JMB	JMB	JMB
73	10-1-58	JMB	JMB	JMB
74	10-1-58	JMB	JMB	JMB
75	10-1-58	JMB	JMB	JMB
76	10-1-58	JMB	JMB	JMB
77	10-1-58	JMB	JMB	JMB
78	10-1-58	JMB	JMB	JMB
79	10-1-58	JMB	JMB	JMB
80	10-1-58	JMB	JMB	JMB
81	10-1-58	JMB	JMB	JMB
82	10-1-58	JMB	JMB	JMB
83	10-1-58	JMB	JMB	JMB
84	10-1-58	JMB	JMB	JMB
85	10-1-58	JMB	JMB	JMB
86	10-1-58	JMB	JMB	JMB
87	10-1-58	JMB	JMB	JMB
88	10-1-58	JMB	JMB	JMB
89	10-1-58	JMB	JMB	JMB
90	10-1-58	JMB	JMB	JMB
91	10-1-58	JMB	JMB	JMB
92	10-1-58	JMB	JMB	JMB
93	10-1-58	JMB	JMB	JMB
94	10-1-58	JMB	JMB	JMB
95	10-1-58	JMB	JMB	JMB
96	10-1-58	JMB	JMB	JMB
97	10-1-58	JMB	JMB	JMB
98	10-1-58	JMB	JMB	JMB
99	10-1-58	JMB	JMB	JMB
100	10-1-58	JMB	JMB	JMB