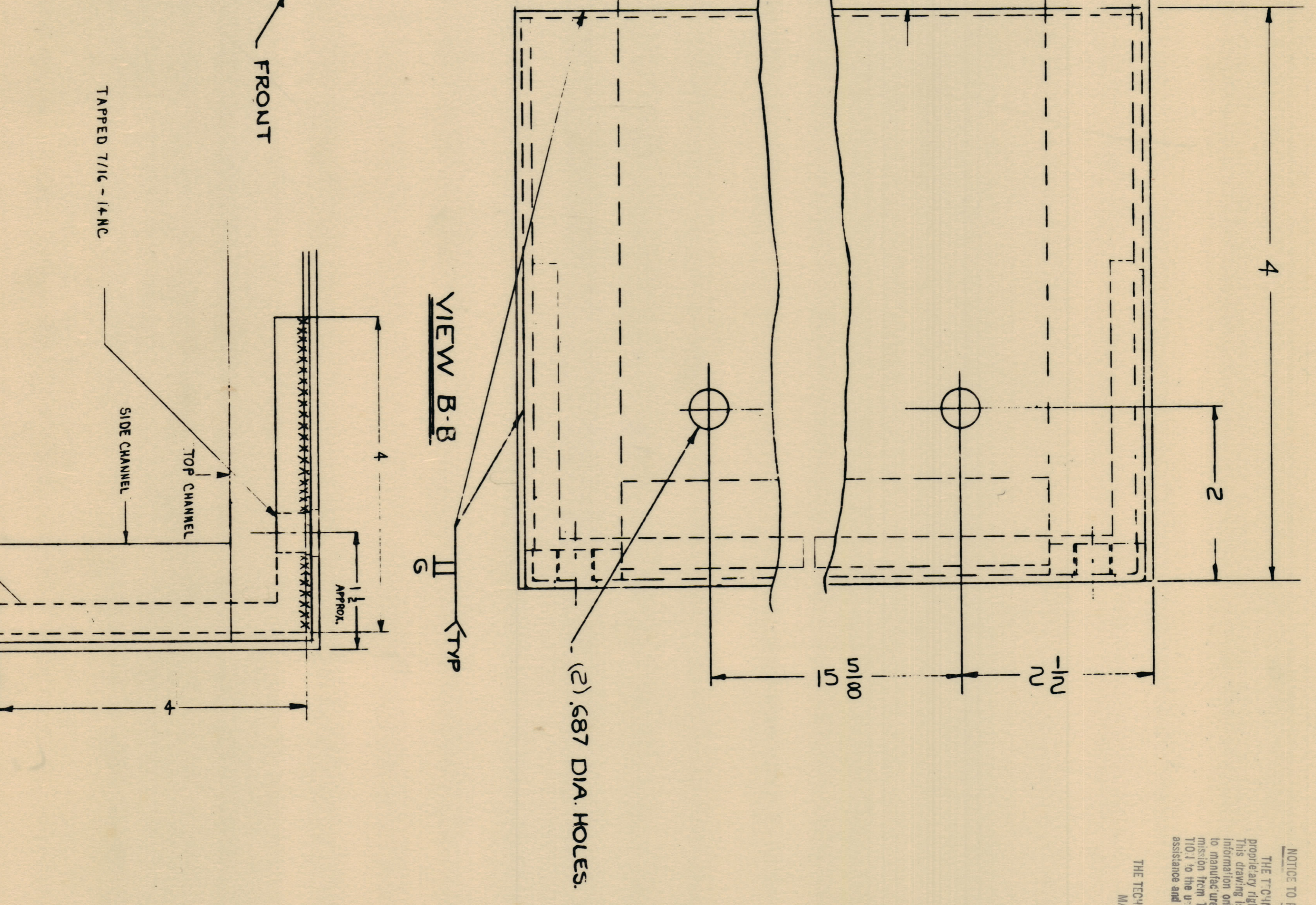
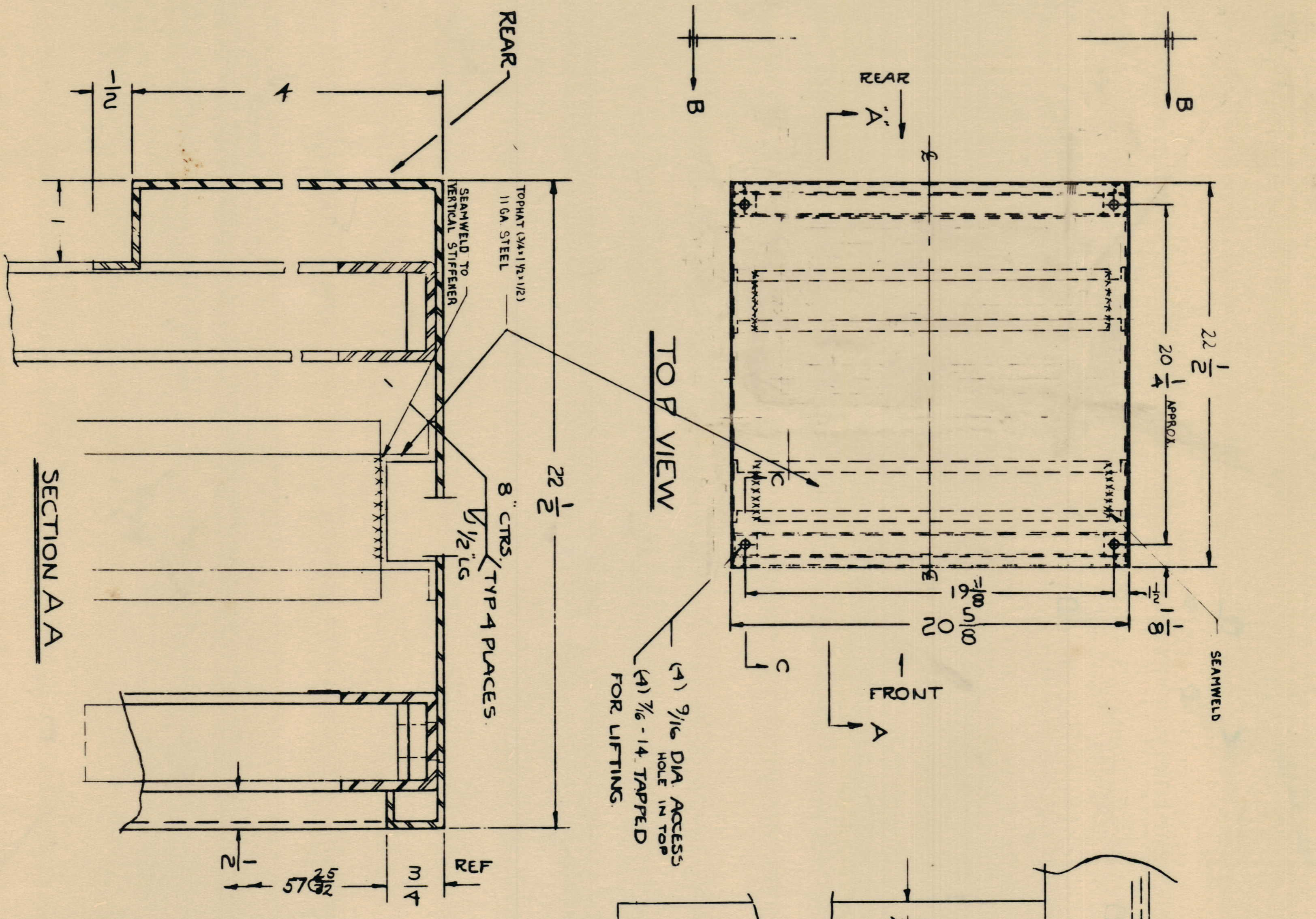


IT IS THE POLICY OF THE COMPANY TO OBTAIN THE BEST QUALITY MATERIALS AT THE LOWEST POSSIBLE COST. THE COMPANY IS NOT RESPONSIBLE FOR THE QUALITY OF MATERIALS SUPPLIED BY OTHERS. THE COMPANY IS NOT RESPONSIBLE FOR THE QUALITY OF MATERIALS SUPPLIED BY OTHERS. THE COMPANY IS NOT RESPONSIBLE FOR THE QUALITY OF MATERIALS SUPPLIED BY OTHERS.

REV.	DATE	BY	CHKD.	DESCRIPTION
1				ISSUED FOR FABRICATION
2				REVISIONS



FOUR, 4x4x1/8 THICK ANGLES (STEEL) SEAMWELDED TO INSIDE OF CHANNEL.

REV.	DATE	BY	CHKD.	DESCRIPTION
1				ISSUED FOR FABRICATION
2				REVISIONS

PROJECT NO.	44-15
DATE	
BY	
CHKD.	
DESCRIPTION	THE TECHNICAL MATERIAL CORP. MANHATTAN, NEW YORK
MATERIAL	CARBON, Elec. Equipment
TYPING	DETAIL, Top Section
HEAT TREATING	
OTHER	
SHEET	3 of 7
MS-2107	

NOTICE TO PERSONS RECEIVING THIS DRAWING
 THE TECHNICAL MATERIAL CORPORATION claims property right in the material disclosed herein. Information is issued in confidence for engineering purposes only and may not be re-released or used to manufacture or copy without the written permission from The Technical Material Corporation. The drawing is loaned for mutual assistance and is subject to recall at any time.
 Property of:
 THE TECHNICAL MATERIAL CORPORATION
 MANHATTAN, NEW YORK

MS-2107