

IF IT IS FOUND NECESSARY TO CHANGE ANY TOLERANCE OR OTHER DETAIL SPECIFIED ON THIS DRAWING NOTIFY THE PURCHASER IMMEDIATELY BY RETURNING TO THE DRAWING OFFICE WITH THE NECESSARY CHANGES. THE PURCHASER'S APPROVAL AND SIGNATURE WILL BE OBTAINED BEFORE ANY SUCH CHANGES ARE MADE. REMOVE ALL STAMPS AND MARKS BEFORE REMOVING ALL DIMENSIONS AND SHARP EDGES.

DATE	ISSUED	BY	FOR

UNLESS OTHERWISE SPECIFIED, DIMENSIONS SHALL BE IN INCHES. DECIMALS SHALL BE TO TWO DECIMALS. FRACTIONS SHALL BE TO THE NEAREST 1/32". TOLERANCES SHALL BE AS FOLLOWS:

FINISHED SURFACES	±.005
UNFINISHED SURFACES	±.010
HOLES	±.010
KEYS	±.010
SPRINGS	±.010
WELDS	±.010
THREADS	±.010

CUT HERE GUARANTEED 24"

REV	DATE	BY	APP'D	DESCRIPTION
1				
2				
3				

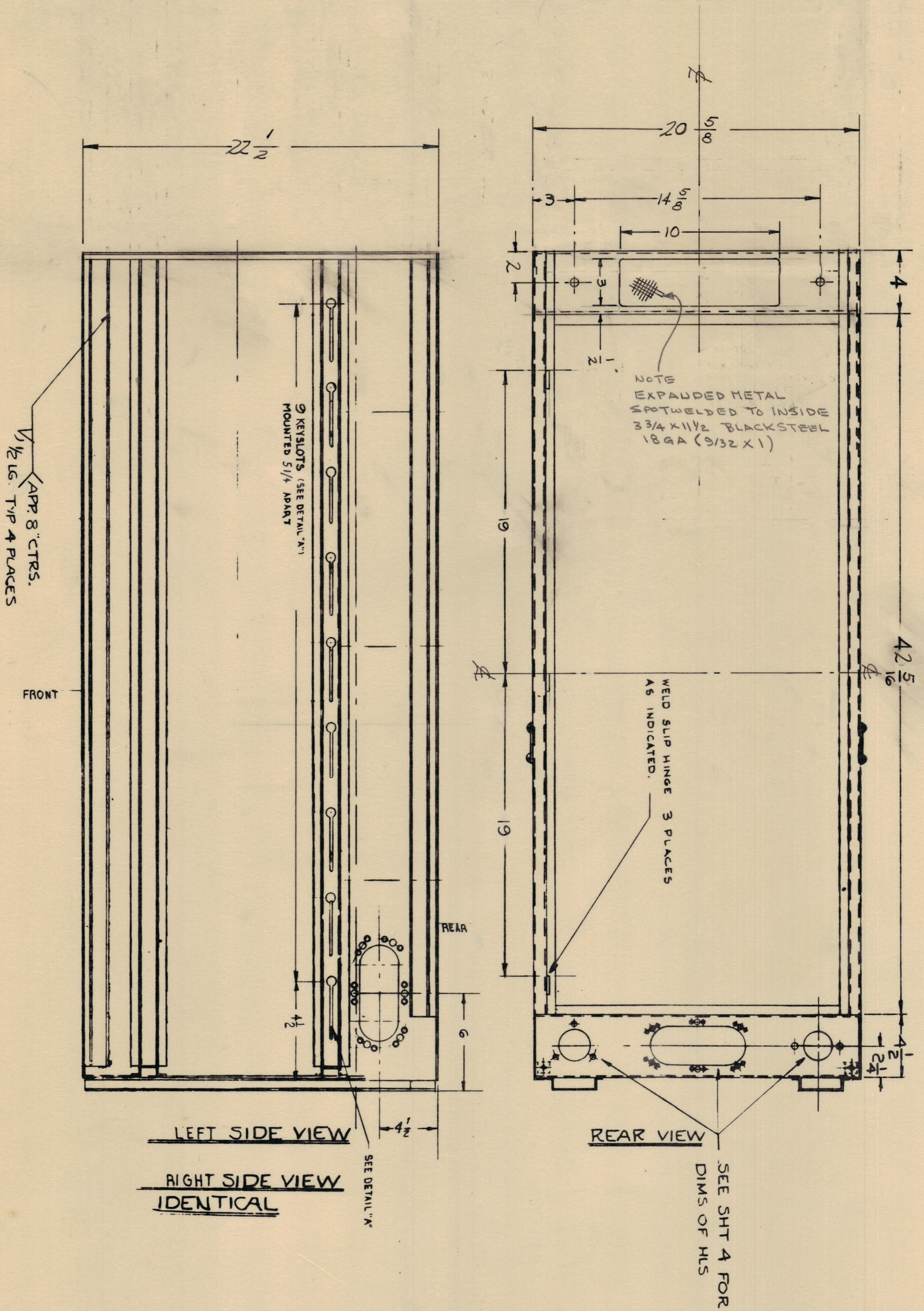
NO.	REV.	DATE	BY	APP'D	DESCRIPTION

RIGHT SIDE IDENTICAL

THIS TECHNICAL MATERIAL COMPANY
MANUFACTURING NEW YORK

CABINET, Elec. Equipment
REAR SIDE VIEWS
10/11/60

SHEET 5 of 7 MS-2107



NOTICE TO PERSONS RECEIVING THIS DRAWING

THE TECHNICAL MATERIAL CORPORATION
PROPERTY OF:
M. MAROZEC, NEW YORK

Property of:
THE TECHNICAL MATERIAL CORPORATION
M. MAROZEC, NEW YORK

MS-2107