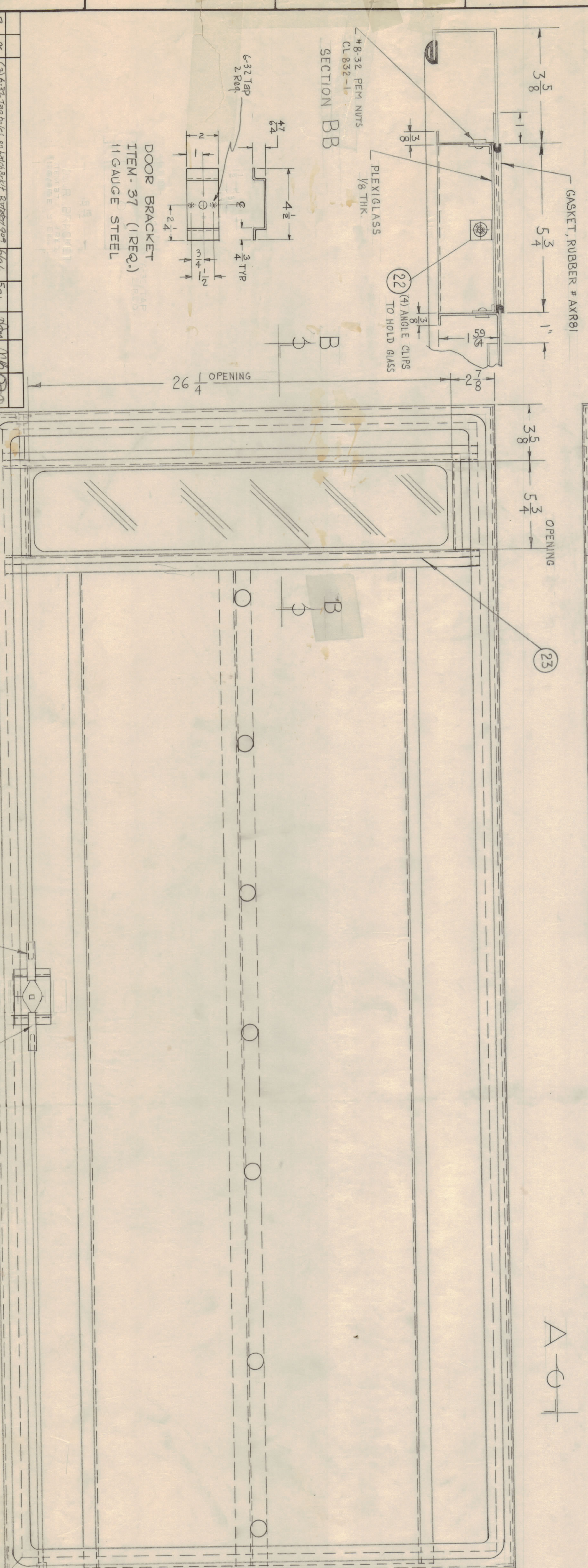
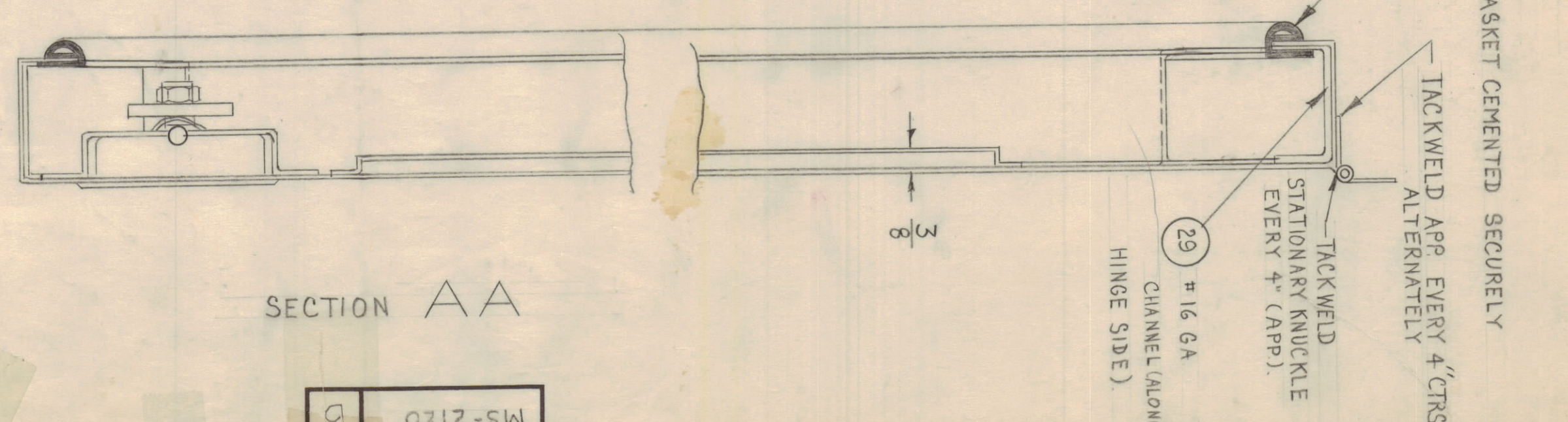


SECTION A-A



(MS-2120-1) FRONT DOOR OF MAIN FRAME AS SHOWN  
 (MS-2120-2) FRONT DOOR OF POWER AMP OPPOSITE HAND (27)

FINISH NOTE:  
 PRIME OR DIP FINISH  
 S14 ZINC CHROMIUM  
 OR PRIME & PAINT TO CUSTOMERS SPEC.

REQ. ITEM	PART NO.	SYMBOL
STOCK SIZE	THE TECHNICAL MATERIEL CORP. MAMARONECK, NEW YORK	
MATERIAL	DOOR, FRONT	
TYPE & TOLERANCE		
HEAT TREAT SPEC.		
FINISH & SPEC. NO.		

REV.	DESCRIPTION	DATE	BY	CHECKED
1	DOOR BRACKET ITEM-37 (1 REQ.) 11 GAUGE STEEL	5/23/60	W.D.	W.D.
2	DOOR BRACKET ITEM-37 (1 REQ.) 11 GAUGE STEEL	5/23/60	W.D.	W.D.
3	DOOR BRACKET ITEM-37 (1 REQ.) 11 GAUGE STEEL	5/23/60	W.D.	W.D.
4	DOOR BRACKET ITEM-37 (1 REQ.) 11 GAUGE STEEL	5/23/60	W.D.	W.D.

REV.	DESCRIPTION	DATE	BY	CHECKED
1	DOOR BRACKET ITEM-37 (1 REQ.) 11 GAUGE STEEL	5/23/60	W.D.	W.D.
2	DOOR BRACKET ITEM-37 (1 REQ.) 11 GAUGE STEEL	5/23/60	W.D.	W.D.
3	DOOR BRACKET ITEM-37 (1 REQ.) 11 GAUGE STEEL	5/23/60	W.D.	W.D.
4	DOOR BRACKET ITEM-37 (1 REQ.) 11 GAUGE STEEL	5/23/60	W.D.	W.D.

REV.	DESCRIPTION	DATE	BY	CHECKED
1	DOOR BRACKET ITEM-37 (1 REQ.) 11 GAUGE STEEL	5/23/60	W.D.	W.D.
2	DOOR BRACKET ITEM-37 (1 REQ.) 11 GAUGE STEEL	5/23/60	W.D.	W.D.
3	DOOR BRACKET ITEM-37 (1 REQ.) 11 GAUGE STEEL	5/23/60	W.D.	W.D.
4	DOOR BRACKET ITEM-37 (1 REQ.) 11 GAUGE STEEL	5/23/60	W.D.	W.D.

REV.	DESCRIPTION	DATE	BY	CHECKED
1	DOOR BRACKET ITEM-37 (1 REQ.) 11 GAUGE STEEL	5/23/60	W.D.	W.D.
2	DOOR BRACKET ITEM-37 (1 REQ.) 11 GAUGE STEEL	5/23/60	W.D.	W.D.
3	DOOR BRACKET ITEM-37 (1 REQ.) 11 GAUGE STEEL	5/23/60	W.D.	W.D.
4	DOOR BRACKET ITEM-37 (1 REQ.) 11 GAUGE STEEL	5/23/60	W.D.	W.D.