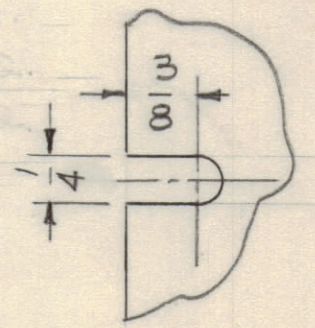


A ~  $\frac{5}{16}$  DIA. HOLES 4 REQ.  
 B ~ (SEE DETAIL) 4 REQ.  
 C ~  $\frac{1}{4}$  DIA. HOLES 4 REQ.



"B"  
 4 ~ REQ.

FINISH:

S404 ~ YELLOW IRIDITE  
 S114 ~ ZINC CHROMATE PRIMER  
 S115 ~ TMC SMOOTH GREY ENAMEL } FRONT EDGES ONLY  
 OR PRIME & PAINT TO CUST. SPEC.

MACHINING:

- 1 ~ LATERAL BOW OF PANEL MUST BE KEPT TO .031 TOLERANCE
- 2 ~ MILL ALL EDGES
- 3 ~ HOLES MUST BE DRILLED.
- 4 ~ PANEL MUST BE FREE OF ALL MACHINING MARKS, GOUGES AND SCRATCHES. IF NECESSARY, SAND FRONT OF PANEL WITH NO. 120 GRIT SANDPAPER.

UNLESS OTHERWISE SPECIFIED DIMENSIONS ARE IN INCHES AND INCLUDE CHEMICALLY APPLIED OR PLATED FINISHES	
DECIMALS .X ± .05 .XX ± .01 .XXX ± .005	FRACTIONS ± 1/64 ANGLES ± 0° 30'
<b>TOLERANCES</b>	

CUT HERE GUARANTEED

A	(4) "C" HOLES ADDED "A" HOLES RELOCATED	9/28/60	3098	CY	[Signature]	[Signature]	
ISSUE	ZONE	DESCRIPTION	DATE	CH. NO.	DRAFTS	CHECKER	ENG. APP.
TOLERANCES			SCALE: FULL				
DEC. DIM. ± FRAC. DIM. ± ANGULAR DIM. ±			MAXIMUM ALLOWABLE TOLERANCES HAVE BEEN DETERMINED AND ANY DEVIATIONS WILL BE CAUSE FOR REJECTION. REMOVE ALL BURRS AND SHARP EDGES				

1	PTE ~ 1	PVR		3-24-60
REQ PER UNIT	MODEL	SECTION	ASSY. NO.	DATE

REQ. ITEM	PART NO.	DESCRIPTION	SYMBOL
	3/16	THE TECHNICAL MATERIEL CORP. MAMARONECK, NEW YORK	
	ALUMINUM	PANEL, REGULATOR	
	2024-T3	50-60 CYCLE	
		10R1110	
		DRAWN	ELEC. DES. APP. MECH. DES. APP.
		CHECKED	FINAL APPROVAL
		HEAT TREAT. SPEC.	
		FINISH & SPEC. NO.	
		SEE NOTE	
		MS-2153	A