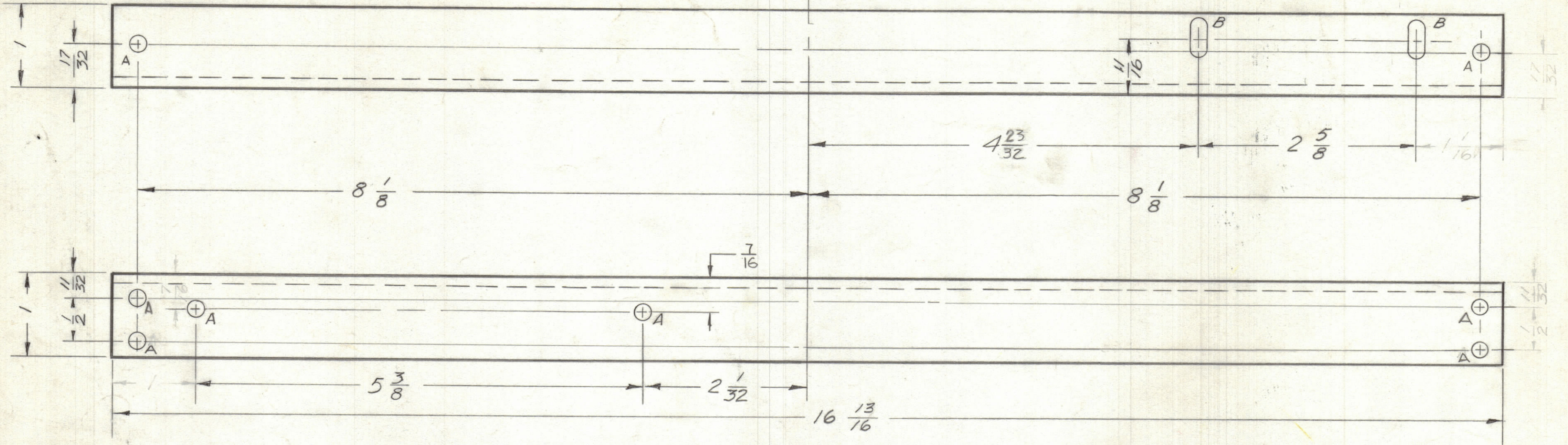


MS-2176-2 BOTTOM BRACE

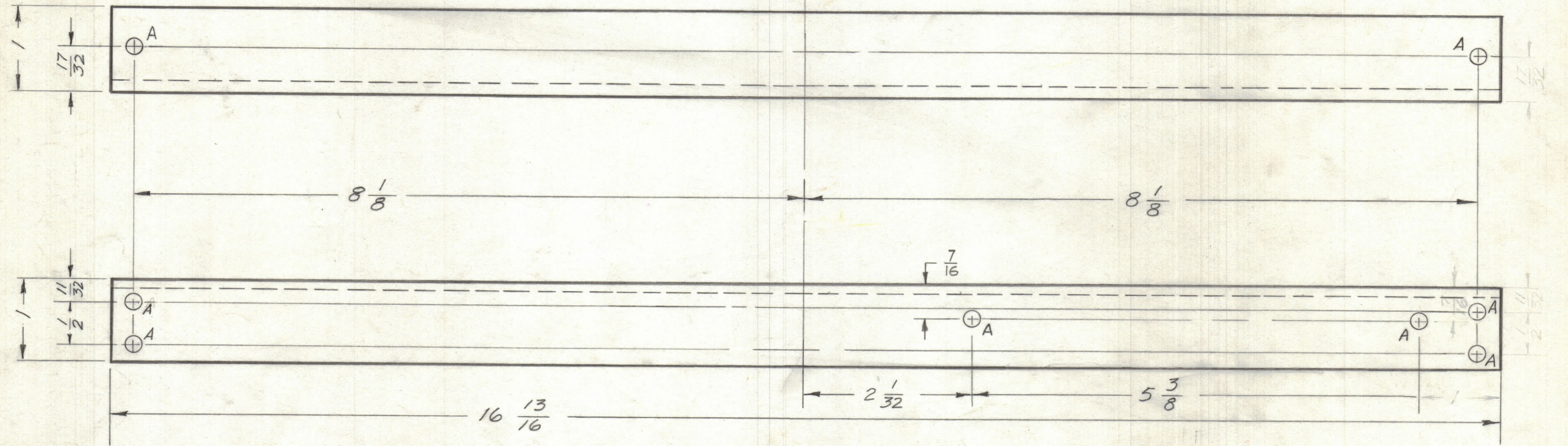
MS-2176 C

A - $\frac{3}{16}$ DIA. ϕ 8 REQ.
 B - $\frac{3}{16} \times \frac{3}{8}$ SLOT 2 REQ.



MS-2176-1 TOP BRACE

A - $\frac{3}{16}$ DIA. ϕ 8 REQ.



UNLESS OTHERWISE SPECIFIED
 DIMENSIONS ARE IN INCHES AND INCLUDE
 CHEMICALLY APPLIED OR PLATED FINISHES

DECIMALS: .XX ± .01, .XXX ± .005
 FRACTIONS: ± 1/64, ANGLES: ± 0° 30'

TOLERANCES

CUT HERE GUARANTEED 2-56

C	—	REDRAWN & REVISED	8/22/61	5451	WA	RU	SM
SYM	ZONE	DESCRIPTION	DATE	CH. NO.	DRAFTS	CHECKER	ENG. APP.
UNLESS OTHERWISE SPECIFIED: DIMENSIONS ARE IN INCHES			SCALE				
TOLERANCES ON FRACTIONS ± 1/64 DECIMALS ± .005 ANGLES ± 1/2°			MAXIMUM ALLOWABLE TOLERANCES HAVE BEEN DETERMINED AND ANY DEVIATIONS WILL BE CAUSE FOR REJECTION. REMOVE ALL BURRS & SHARP EDGES				

1ea	CCP-5			8-22-61
1ea	CCP-1			8-22-61
REQ. PER UNIT	MODEL	SECTION	ASS'Y. NO.	DATE

REQ. ITEM	PART NO.	DESCRIPTION	SYMBOL
	1 X 1 X 1/8	THE TECHNICAL MATERIEL CORP. MAMARONECK, NEW YORK	
	STOCK SIZE		
	ALUMINUM	TOP & BOTTOM BRACE	
	MATERIAL		
	6063-T5	WA	RUZZO
	TYPE & TEMPER	CHECKED	FINAL APPROVAL
	HEAT TREAT. SPEC.		
	S404 YEL. IRIDITE		MS-2176
	FINISH & SPEC. NO.	ELEC. DES. APP.	MECH. DES. APP.
		SHEET	OF