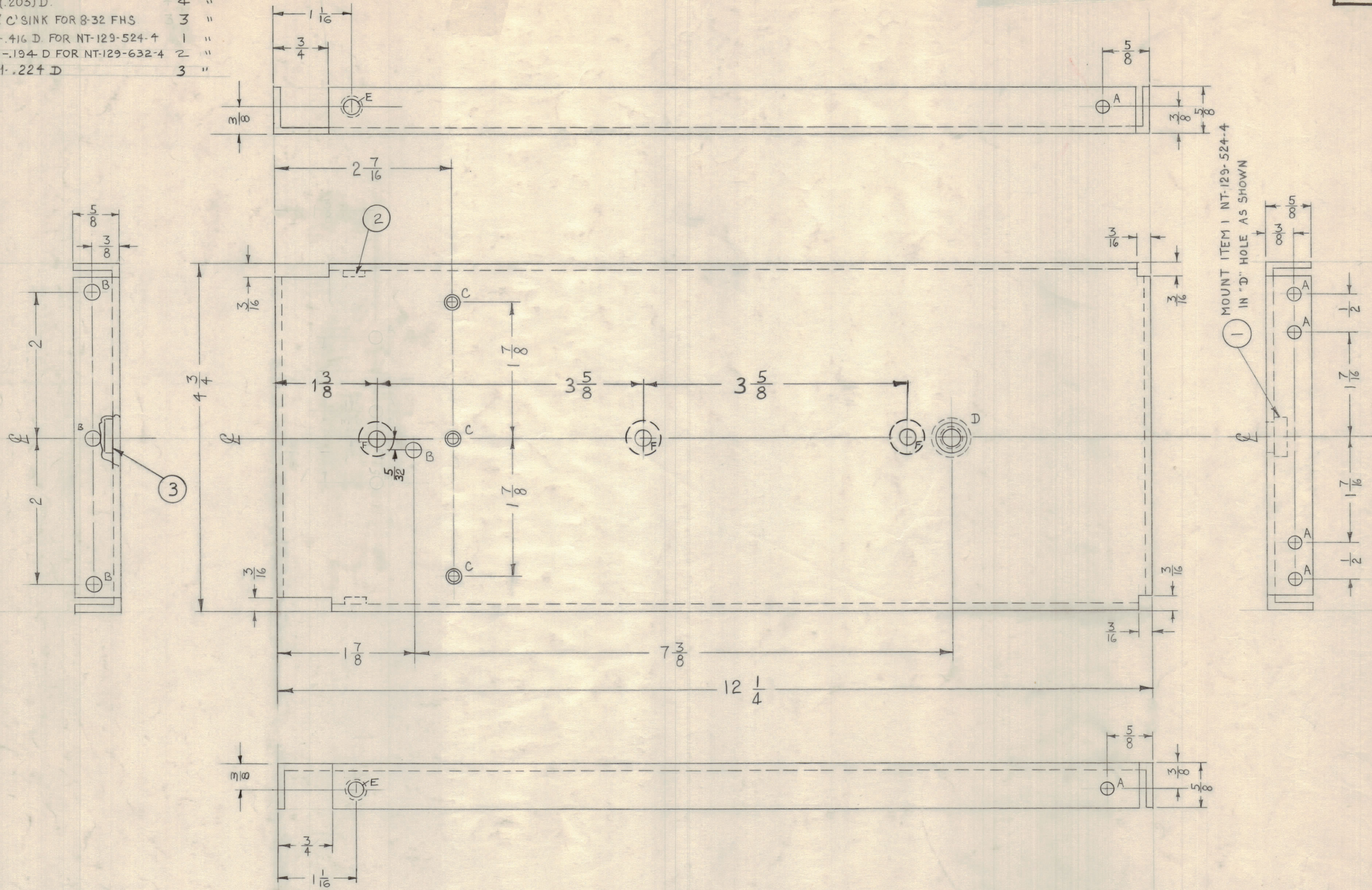


- A-1/64 (.171)D. 6 REQ.
- B-13/64 (.203)D. 4 "
- C-DR & C'SINK FOR 8-32 FHS 3 "
- D-.413-.416 D. FOR NT-129-524-4 1 "
- E-.191-.194 D FOR NT-129-632-4 2 "
- F-.221-.224 D 3 "



UNLESS OTHERWISE SPECIFIED
DIMENSIONS ARE IN INCHES AND INCLUDE
CHEMICALLY APPLIED OR PLATED FINISHES

DECIMALS	TOLERANCES	FRACTIONS
.x ± .05		± 1/64
.xx ± .01		ANGLES ± 0° 30'
.xxx ± .005		

CUT HERE
GUARANTEED
2-48

C	D4	DIM 12 1/4 WAS 12	5-3-61	4795	RU	90/3	
B	E34.5	(3) "F" HOLES ADDED	3-1-61	4252	MMF	90/3	
A	B2	ITEM 1 ADDED TO BUILD UP	5	18	296	Cy	
	CC	(2) "E" HOLES ADDED					
	CC	(2) NT-129-632-4 ADDED					

ISSUE ZONE DESCRIPTION DATE CH. NO. DRAFTS CHECKER ENG. APP.

TOLERANCES SCALE:

DEC. DIM. ±
FRAC. DIM. ± 1/64
ANGULAR DIM. ±

MAXIMUM ALLOWABLE TOLERANCES
HAVE BEEN DETERMINED AND ANY DEVIATIONS
WILL BE CAUSE FOR REJECTION.
REMOVE ALL BURRS AND SHARP EDGES

REQ PER UNIT	MODEL	SECTION	ASS'Y. NO.	DATE
	CPP-1			4-6-60

3	3	NT-129-832-4	NUT ROUND, SWAGE TYPE
2	2	NT-129-632-4	NUT ROUND, SWAGE TYPE
1	1	NT-129-524-4	NUT ROUND, SWAGE TYPE
REQ. ITEM	PART NO.	DESCRIPTION	SYMBOL
	.081	THE TECHNICAL MATERIEL CORP.	
		MAMARONECK, NEW YORK	
	ALUMINUM	RIGHT SIDE PLATE	
	MATERIAL		
	5052-H32		
	TYPE & TEMPER		
	HEAT TREAT. SPEC.		
	S404 YELL IRIDITE		
	FINISH & SPEC. NO.		
		DRAWN	ELEC. DES. APP. MECH. DES. APP.
		CHECKED	FINAL APPROVAL
			MS-2177 C