

FORM-111  
 ANGULAR DIM. ±  
 DEC. DIM. ±

MAXIMUM ALLOWABLE TOLERANCES HAVE BEEN DETERMINED AND ANY DEVIATIONS WILL BE CAUSE FOR REJECTION.  
 REMOVE ALL BURRS AND SHARP EDGES

ISSUE	ZONE	DESCRIPTION	SCALE: FULL	DATE	CH. NO.	DRAFTS	CHECKER	ENG. APP.
G1	D7	NOTCH (K) WAS 5/16" X 1/8" DIM. ADDED		10/25/64	3523	DM	DM	
F1	F2	① D. HOLES DELETED						
F2	F2	ADDED ITEM 2 (TE-108-6)						
E2	F1	② HOLE WAS 2.50						
D2	F1	③ HOLE WAS 2.50						
D3	F1	④ HOLE WAS 2.50						
F1	F1	⑤ DIM WAS 2.5/8 DIM.						
F1	F1	⑥ DIM WAS 2.5/8 DIM.						
C9	F1	⑦ DETAIL 3/8 WAS 21/64						
B9	F1	⑧ DIM WAS 3/8 ON J HOLE						
A9	F1	⑨ HOLE ADDED						
B2	F1	⑩ HOLE ADDED						
A2	F1	⑪ HOLE ADDED						

HOLES

REQ	U	W	3	26	4 2 2
A	~ 5/32 (.156) D.				
D	~ 13/64 (.203) D.				
E	~ 13/64 X 13/32 SLOTS				
H	~ 3/8 (.375) D.				
I	~ 13/16 (.812) D.				
J	~ 1 1/8 (1.125) D.				
K	~ 1/4 (.250) D.				
L	~ 3/16 DIA.				

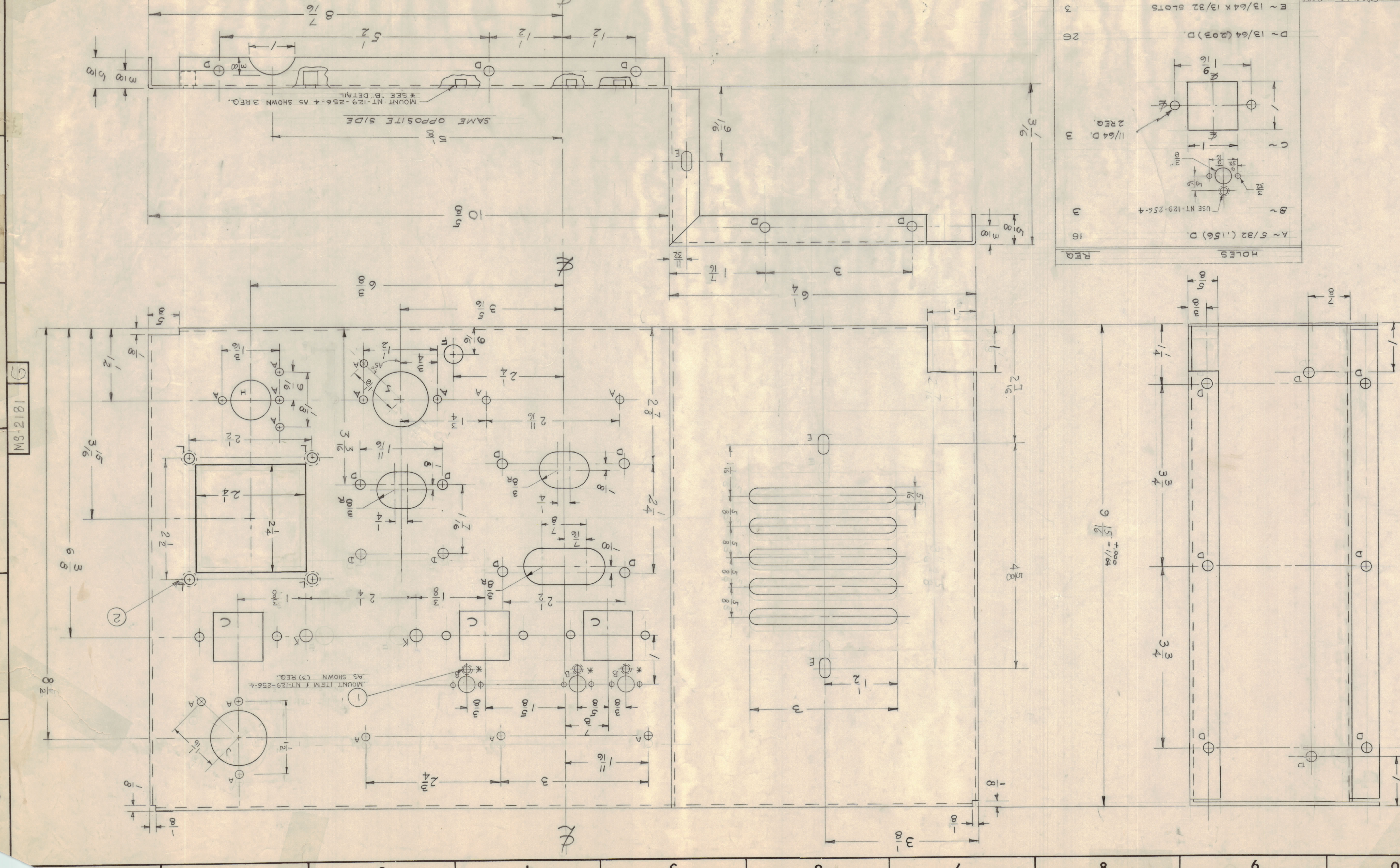
REQ. PER UNIT	MODEL	SECTION	ASBY. NO.	DATE	USED ON
1	CSS-1				

FINISH & SPEC. NO.	HEAT TREAT SPEC.	CHECKED	FINAL APPROVAL
5404 YELLOW/REDITE			

STOCK SIZE	MATERIAL	TYPE & TEMPER	DRAWN
064	ALUMINUM	5052 ~ H32	

REQ. ITEM	PART NO.	DESCRIPTION	SYMBOL
3	NT-129-256-4	NUT ROUND SWAGE TYPE	
4	TE-108-6	STANDOFF RIVET TYPE	

REF: LD-729  
 MOUNT NT-129-256-4 AS SHOWN 3 REQ.  
 \* SEE "B" DETAIL



MS-2181

NOTICE TO PERSONS RECEIVING THIS DRAWING  
 THE TECHNICAL MATERIAL CORPORATION  
 PROPERTY RIGHT IN THE MATERIAL DISCLOSED HEREON  
 DRAWING IS ISSUED IN CONFIDENCE FOR ENGINEERING  
 INFORMATION ONLY AND MAY NOT BE REPRODUCED OR USED  
 TO MANUFACTURE ANYTHING SHOWN HEREON WITHOUT PER-  
 MISSION FROM THE TECHNICAL MATERIAL CORPORATION.  
 THIS DRAWING IS LOANED FOR MUTUAL  
 ASSISTANCE AND IS SUBJECT TO RECALL AT ANY TIME.  
 THE TECHNICAL MATERIAL CORPORATION  
 MANHATTAN, NEW YORK