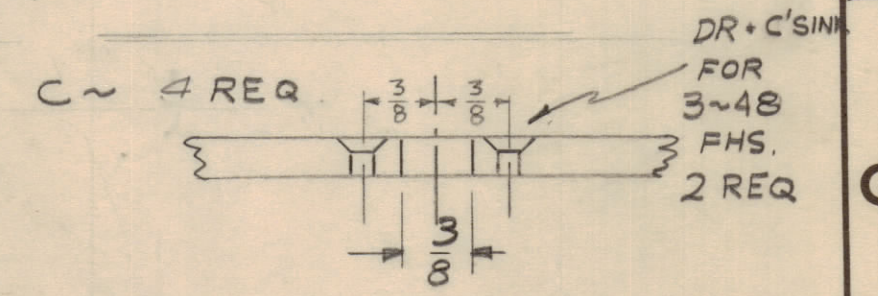
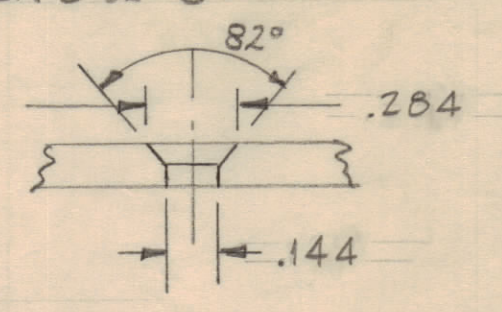


NOTICE TO PERSONS RECEIVING THIS DRAWING

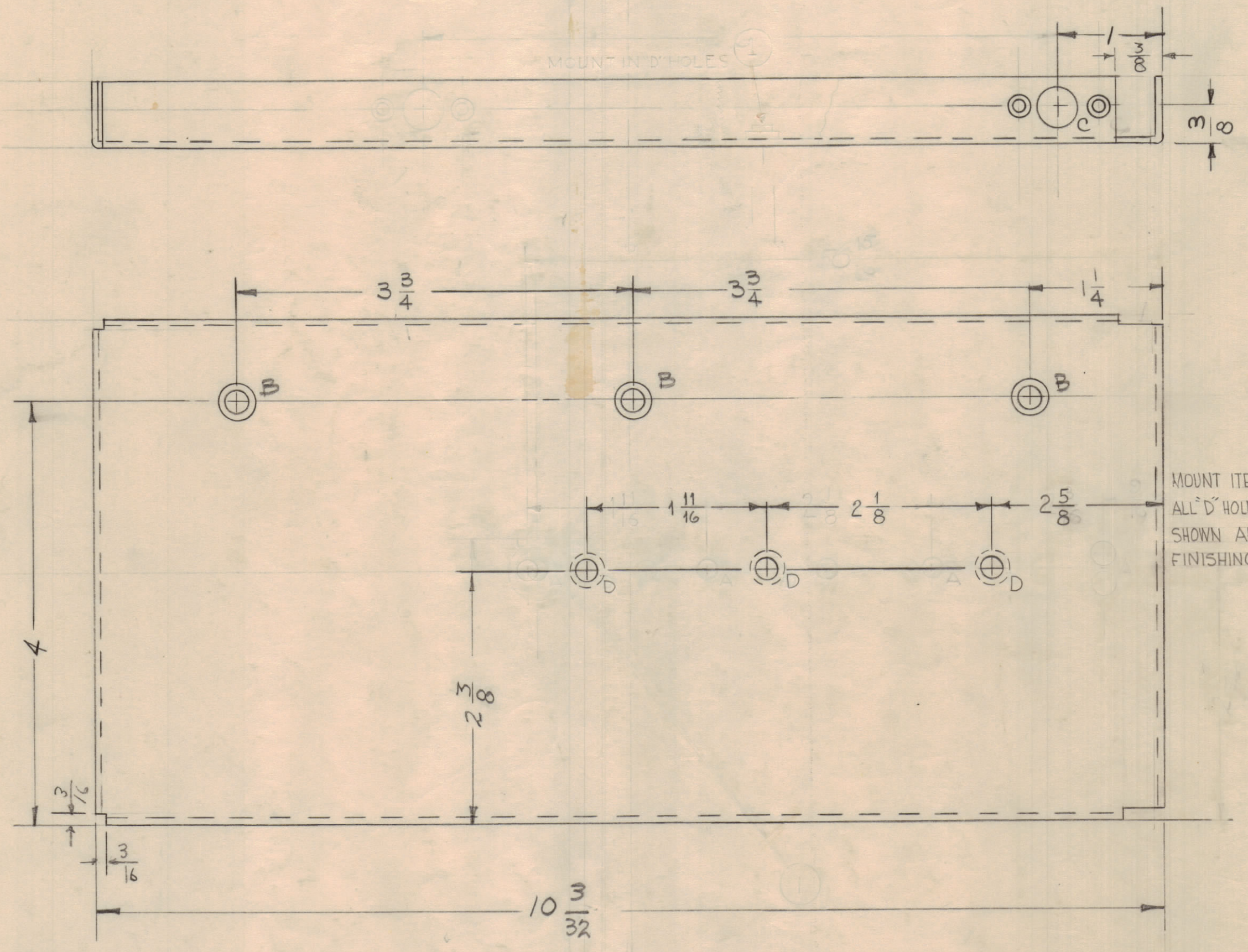
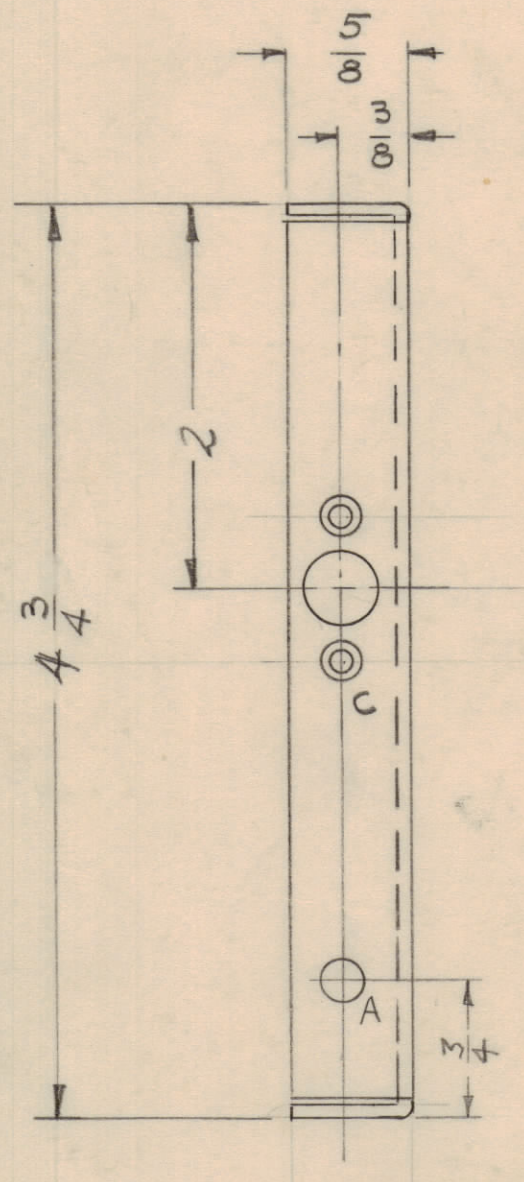
THE TECHNICAL MATERIEL CORPORATION claims proprietary right in the material disclosed hereon. This drawing is issued in confidence for engineering information only and may not be reproduced or used to manufacture anything shown hereon without permission from THE TECHNICAL MATERIEL CORPORATION to the user. This drawing is loaned for mutual assistance and is subject to recall at any time.

Property of:
THE TECHNICAL MATERIEL CORPORATION
MAMARONECK, NEW YORK

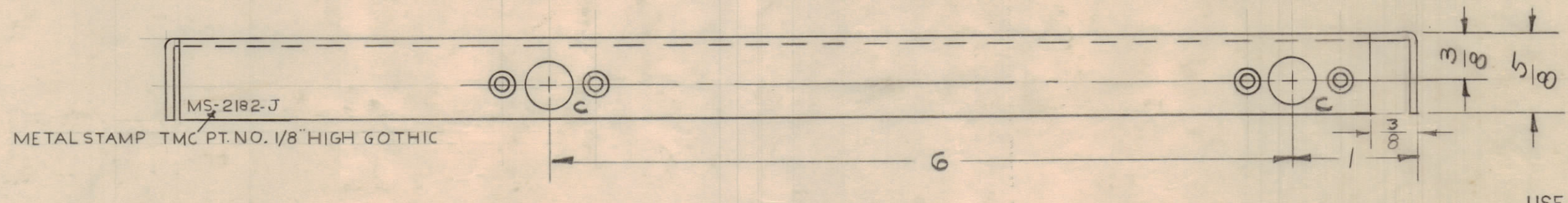
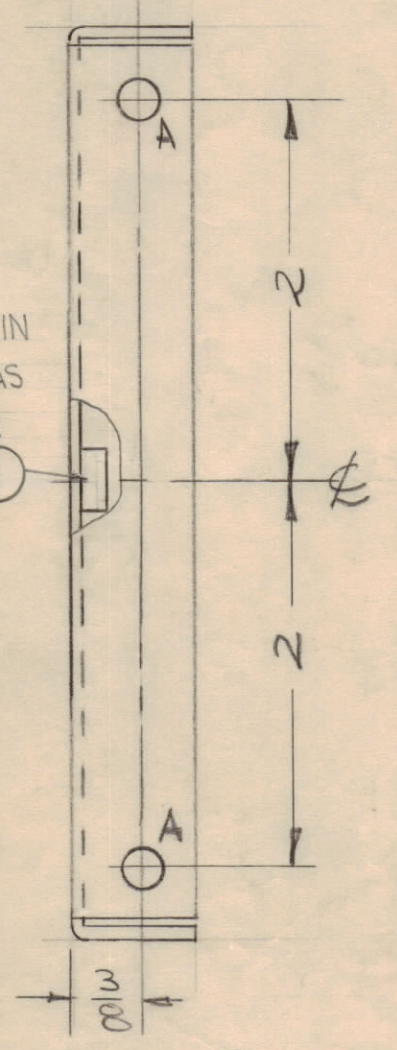
A ~ 13/64 DIA, 3 REQ.
B ~ DRILL & C'SINK FOR 6-32 3"



D-.277 DIA. .280 DIA. 3 REQ.



MOUNT ITEM 1 IN ALL "D" HOLES AS SHOWN AFTER FINISHING. ①



MS-2182-J
METAL STAMP TMC PT. NO. 1/8" HIGH GOTHIC

USE MATERIAL THICKNESS FOR MAX. RADIUS ON ALL BENDS UNLESS OTHERWISE SPECIFIED

MOUNT INSERTS AFTER FINISHING

ISSUE	ZONE	DESCRIPTION	DATE	CH. NO.	DRAFTS	CHECKER	ENG. APP.
K	E2	ITEM ① WAS NT-136-1032-4 NUT SWAGE SELF LOCK.	7-25-61	6962	SPB	WLF	WLF
J	B2	ITEM ① ADDED	5-2-62	6664	RT	WLF	WLF
H	B2	ITEM ① NT-136-1032-4-3 REQ DELETED	2-2-62	6416	G.S.	WLF	WLF
G	E2	"D" HOLE DIA WAS .268/.271	9/14/61	5501	LI	WLF	WLF
F	E3	2 5/8 DIM. WAS 15/8; "D" HOLES WERE 7/32 D.	5-15-61	4888	WLF	WLF	WLF
E	E3	ITEM ① ADDED	3-11-61	4372	WLF	WLF	WLF
D	E4	1 "D" HOLE DELETED (.413) "Z" DRILL	2-8-61	4112	RU	WLF	WLF
C	F5.4	2 "B" HOLES ADDED, "A" HOLE RELOCATED	10-26-60	3300	J.C.B.	WLF	WLF
B	G4	"B" HOLES WERE DRILL FOR 8-32	9/15/60	3300	J.C.B.	WLF	WLF
A	A	ONE "A" HOLE ADDED	4/24/60	3300	WLF	WLF	WLF

UNLESS OTHERWISE SPECIFIED DIMENSIONS ARE IN INCHES AND INCLUDE CHEMICALLY APPLIED OR PLATED FINISHES

DECIMALS: .X ± .05, .XX ± .01, .XXX ± .005

FRACTIONS: ± 1/64, ANGLES: ± 0° 30'

TOLERANCES

CUT HERE GUARANTEED 2.46

REQ PER UNIT	MODEL	SECTION	ASSY. NO.	DATE
1	CSS-1A			1-22-62
1	CSS-1			3-22-60

REQ. ITEM	PART NO.	DESCRIPTION	SYMBOL
3	1	NT-129-1224-4 NUT, SWAGE, ROUND	D
.064			
STOCK SIZE			
ALUMINUM			
MATERIAL			
5052-H 32			
TYPE & TEMPER			
HEAT TREAT. SPEC.			
5404-YEL. IRIDITE			
FINISH & SPEC. NO.			

THE TECHNICAL MATERIEL CORP. MAMARONECK, NEW YORK	LEFT SIDE PLATE
DRAWN: [Signature]	ELEC. DES. APP. [Signature]
CHECKED: [Signature]	MECH. DES. APP. [Signature]
FINAL APPROVAL	
MS-2182	
K	