

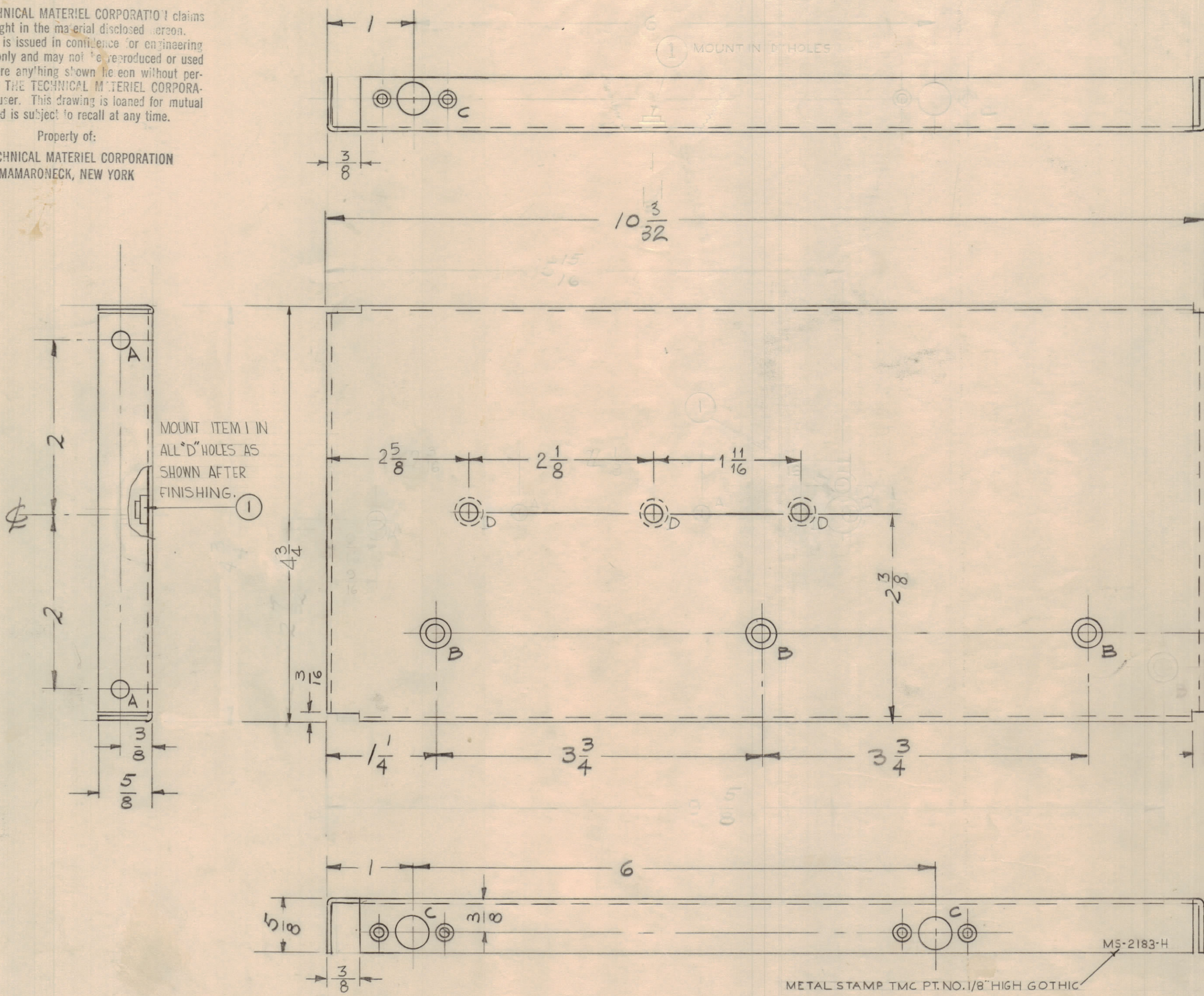
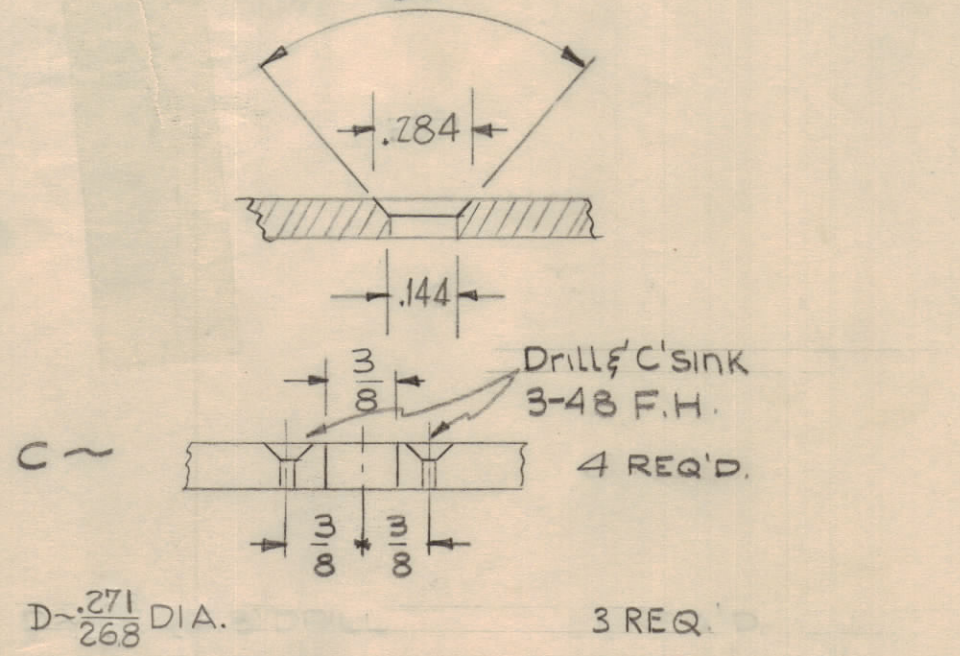
NOTICE TO PERSONS RECEIVING THIS DRAWING

THE TECHNICAL MATERIEL CORPORATION claims proprietary right in the material disclosed herein. This drawing is issued in confidence for engineering information only and may not be reproduced or used to manufacture anything shown hereon without permission from THE TECHNICAL MATERIEL CORPORATION to the user. This drawing is loaned for mutual assistance and is subject to recall at any time.

Property of:
THE TECHNICAL MATERIEL CORPORATION
MAMARONECK, NEW YORK

A 13/64 DIA. — 2 Req MS-2183 H

B - DRILL & C'SINK 6-32 82° 3



USE MATERIAL THICKNESS FOR MAX. RADIUS ON ALL BENDS UNLESS OTHERWISE SPECIFIED

MOUNT INSERTS AFTER FINISHING

H	B2	ITEM ① ADDED	4-2-62	6664	G.S.	W.F.	W.F.	
G	G2	D-HOLE DIA WAS .268/.271	2-21-62	6416	G.S.	W.F.	W.F.	
F	B1	ITEM (1) NT-136-1032-4-3 REQ. DELETED						
E	G2	"D" HOLES WERE 7/32 DIA.	9/14/61	5501	W.F.	W.F.	W.F.	
D	E5	ITEM ① ADDED; 2 5/8 DIM. WAS 15/8	5-15-61	4888	W.F.	W.F.	W.F.	
C	E4	(3) "D" HOLES ADDED						
B	E4	(3) "A" HOLES DELETED						
A	E5	15/8 DIM. WAS 2 3/16	3-11-61	4372	W.F.	W.F.	W.F.	
	E6	"A" Hole Relocated "A" Holes Were 7/32 DIA	2-8-61	4112	RU	W.F.	W.F.	
	E5	"D" Hole "Z" Drill Deleted, "A" Holes Added						
	E5,4	"B" Hole were Dr + C'sk for 8-32	10-26-60	3300	J.C.B.	W.F.	W.F.	
	A	H5 ONE "C" DETAIL DELETED	3/15/60					
ISSUE		ZONE	DESCRIPTION	DATE	CH. NO.	DRAFTS	CHECKER	ENG. APP.
TOLERANCES			SCALE: FULL					
DEC. DIM. ±			MAXIMUM ALLOWABLE TOLERANCES HAVE BEEN DETERMINED AND ANY DEVIATIONS WILL BE CAUSE FOR REJECTION.					
FRAC. DIM. ±			REMOVE ALL BURRS AND SHARP EDGES					
ANGULAR DIM. ±			1/64					

UNLESS OTHERWISE SPECIFIED DIMENSIONS ARE IN INCHES AND INCLUDE CHEMICALLY APPLIED OR PLATED FINISHES

DECIMALS	FRACTIONS
.X ± .05	± 1/64
.XX ± .01	ANGLES ± 0° 30'
.XXX ± .005	

CUT HERE GUARANTEED 2-56

REQ PER UNIT	MODEL	SECTION	ASSY. NO.	DATE
1	CSS-1		3-23-60	

3	1	NT-136-1032-4	NUT, SWAGE, SELF LOCKING	D
REQ. ITEM		PART NO.	DESCRIPTION	SYMBOL
		.064	THE TECHNICAL MATERIEL CORP. MAMARONECK, NEW YORK	
		ALUMINUM	RIGHT SIDE PLATE	
		5052 H32		
		TYPE & TEMPER		
		HEAT TREAT. SPEC.		
		3404 ~ YEL. IRIDITE		
		FINISH & SPEC. NO.		
DRAWN			ELEC. DES. APP.	MECH. DES. APP.
CHECKED			FINAL APPROVAL	
			MS-2183	H