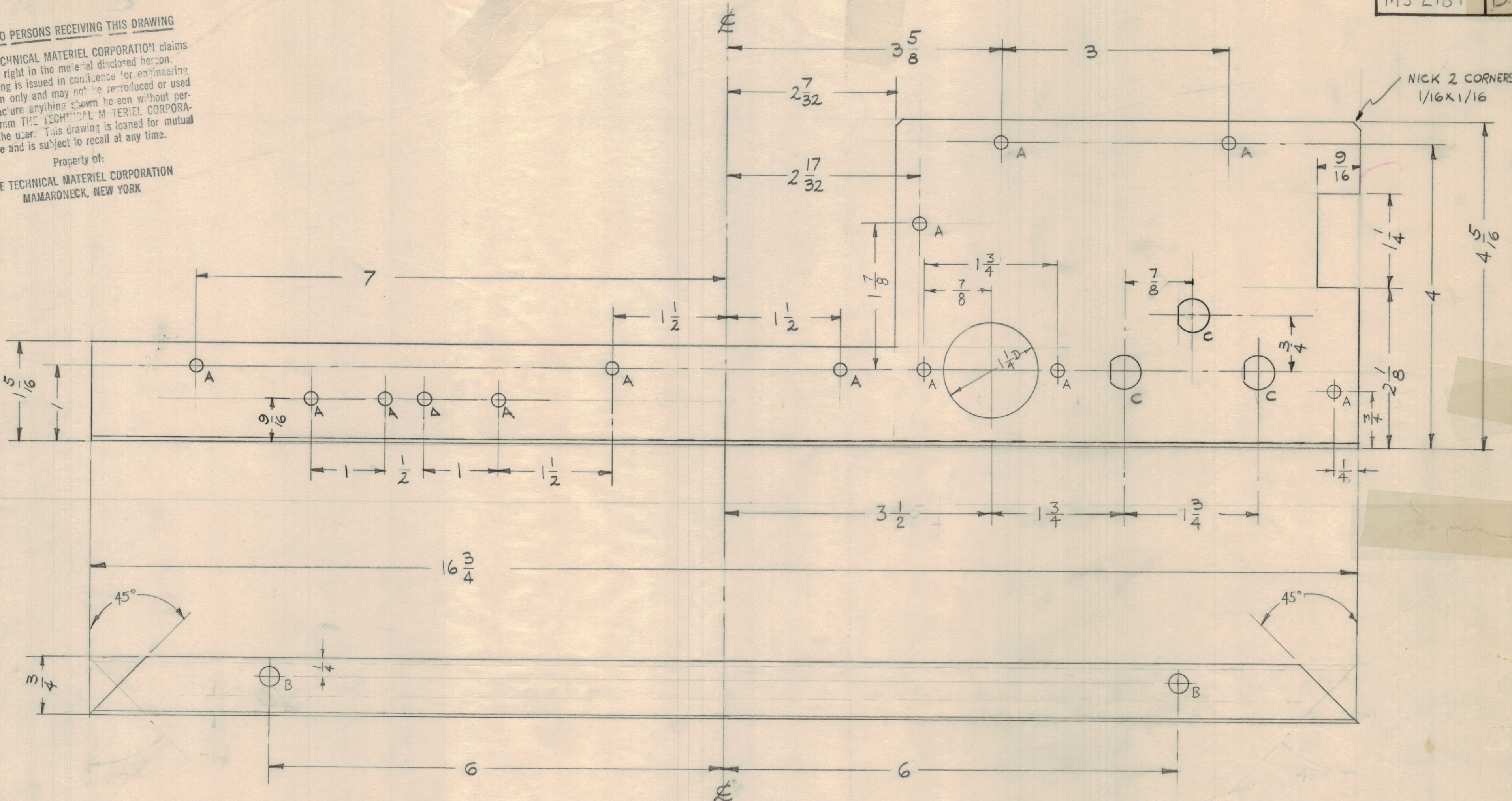


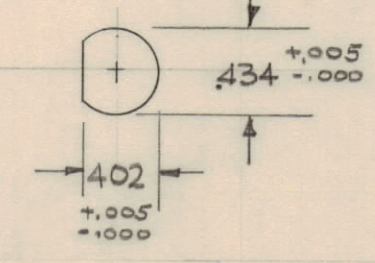
NOTICE TO PERSONS RECEIVING THIS DRAWING

THE TECHNICAL MATERIEL CORPORATION claims proprietary right in the material disclosed herein. This drawing is issued in confidence for engineering information only and may not be reproduced or used to manufacture anything shown hereon without permission from THE TECHNICAL MATERIEL CORPORATION to the user. This drawing is loaned for mutual assistance and is subject to recall at any time.

Property of:
THE TECHNICAL MATERIEL CORPORATION
MAMARONECK, NEW YORK



- A - 11/64 (.171) D 13 REQ.
- B - 1/4 (.25) D 2 "
- C - FOR UG-625 3 "



UNLESS OTHERWISE SPECIFIED
DIMENSIONS ARE IN INCHES AND INCLUDE
CHEMICALLY APPLIED OR PLATED FINISHES

DECIMALS	FRACTIONS
.X ± .05	± 1/64
.XX ± .01	ANGLES
.XXX ± .005	± 0° 30'

TOLERANCES

Ref- TMC DWG. NO. LD-730 (4)

REQ. ITEM	PART NO.	DESCRIPTION	SYMBOL
.064		THE TECHNICAL MATERIEL CORP. MAMARONECK, NEW YORK	
ALUMINUM		REAR PLATE	
5052 - H 32			
1	CSS-1A	1-30-62	
REQ PER UNIT	MODEL	SECTION	ASS'Y. NO.
			DATE
			FINISH & SPEC. NO.

ISSUE	ZONE	DESCRIPTION	DATE	CH. NO.	DRAFTS	CHECKER	ENG. APP.
B	F5	4 "A" Holes added	5/14/60	2277	W	gcr	
A	1	ONE "A" HOLE ADDED	4/24/60	-H	WF	gide	ahk

TOLERANCES: 1/64

SCALE: FULL

MAXIMUM ALLOWABLE TOLERANCES HAVE BEEN DETERMINED AND ANY DEVIATIONS WILL BE CAUSE FOR REJECTION. REMOVE ALL BURRS AND SHARP EDGES