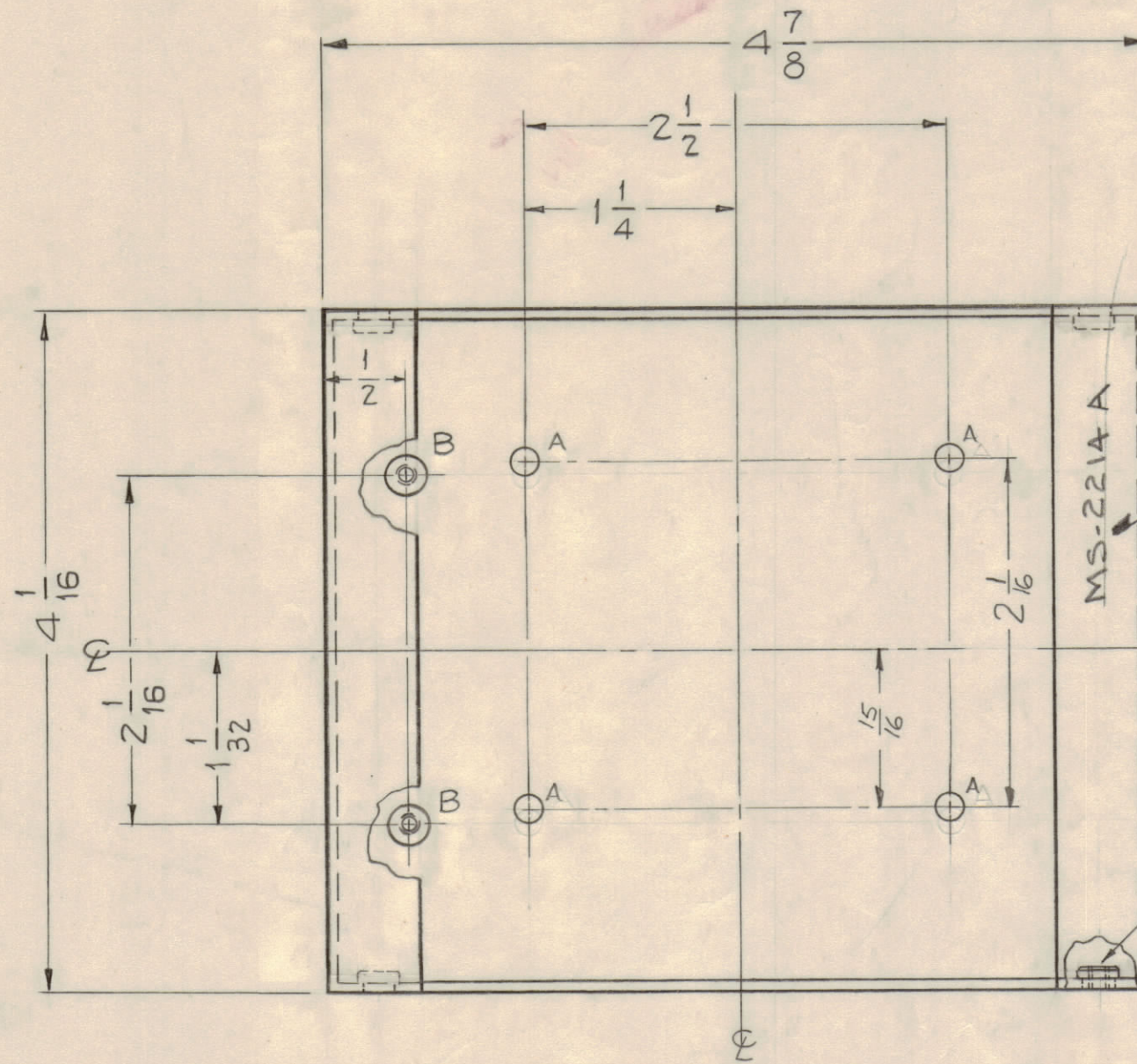
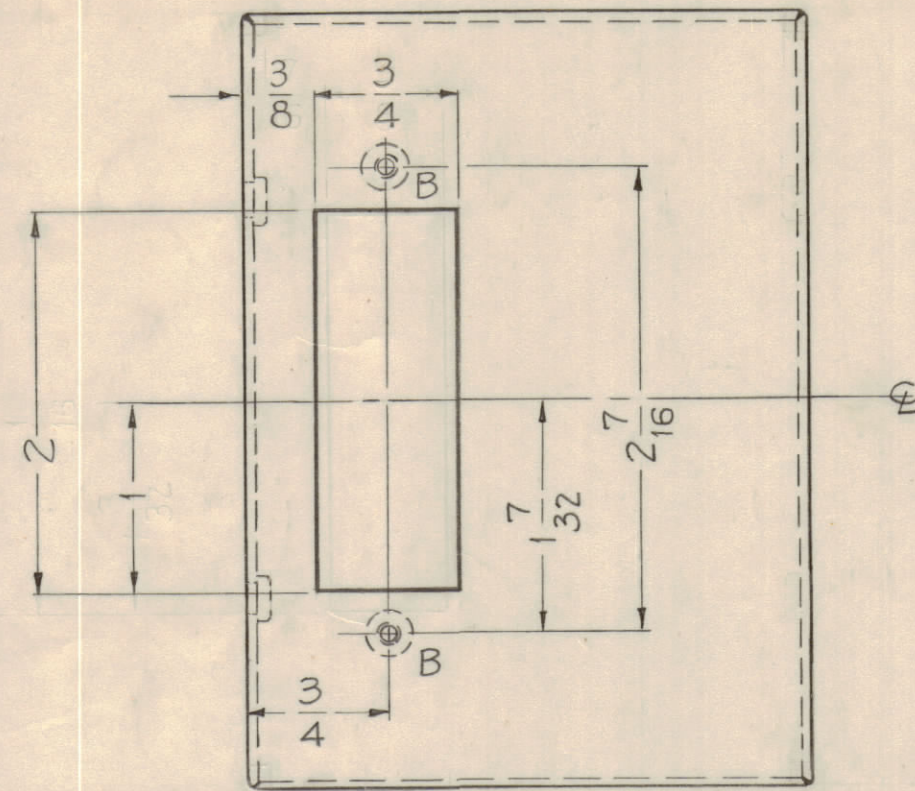


NOTICE TO PERSONS RECEIVING THIS DRAWING

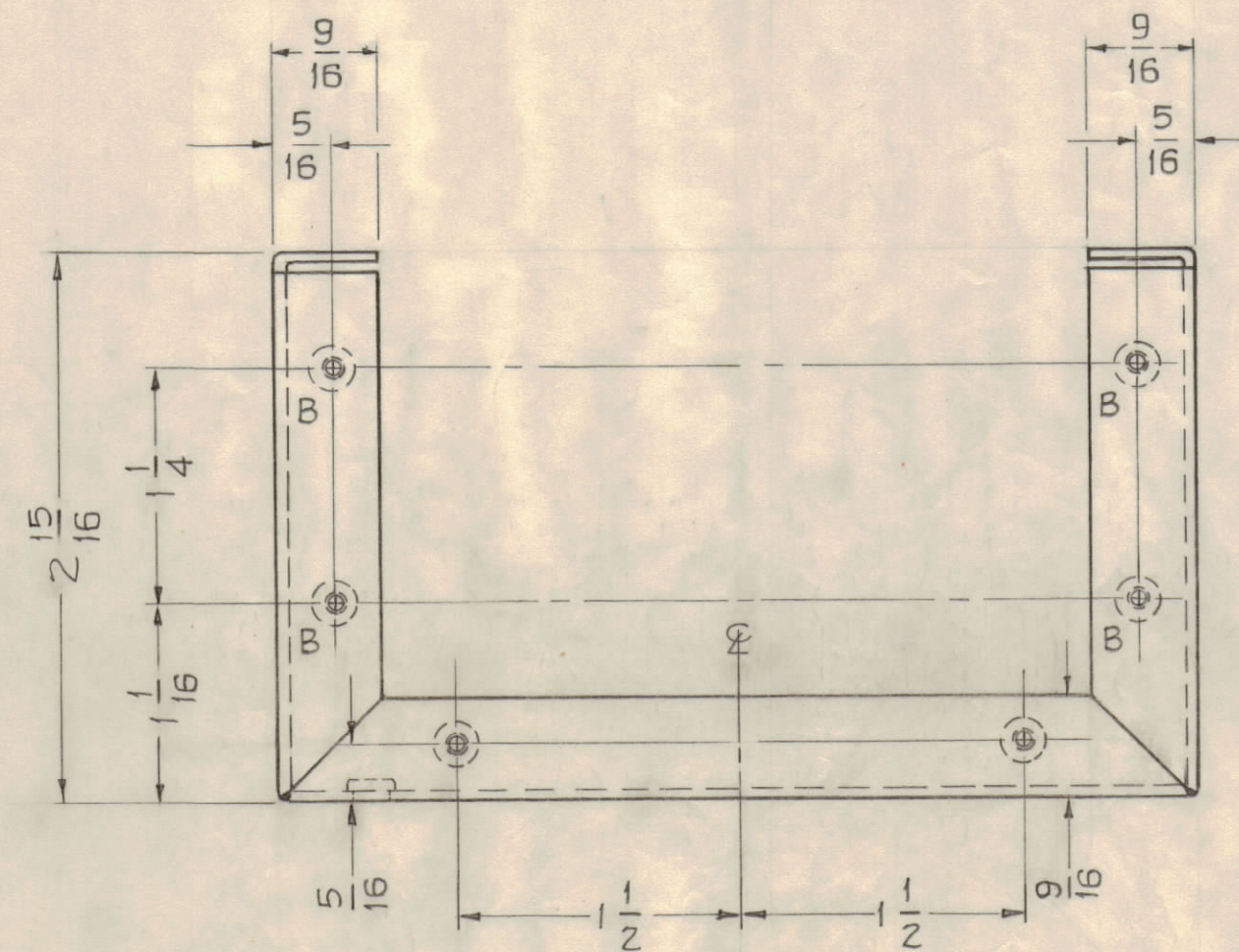
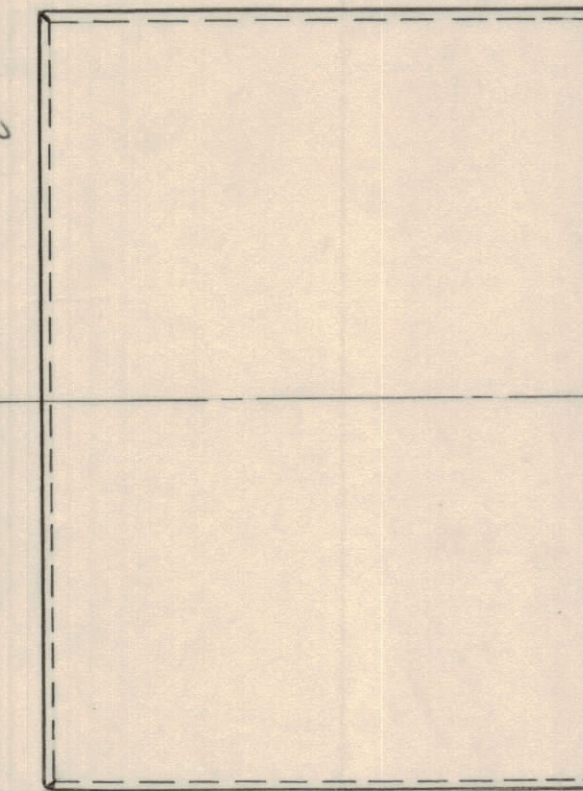
THE TECHNICAL MATERIEL CORPORATION claims proprietary right in the material disclosed hereon. This drawing is issued in confidence for engineering information only and may not be reproduced or used to manufacture anything shown hereon without permission from THE TECHNICAL MATERIEL CORPORATION to the user. This drawing is loaned for mutual assistance and is subject to recall at any time.

Property of:
THE TECHNICAL MATERIEL CORPORATION
MAMARONECK, NEW YORK

HOLES -
A - 5/32 (.156) DIA. 4 REQ.
B - .161 MIN., .164 MAX. DIA'S. 16 REQ.
FOR NT129-440-3



METAL STAMP
THE PART NO. AS SHOWN
1/8 HIGH GOTHIC



REQ. ITEM	16 1	PART NO.	NT129-440-3	DESCRIPTION	NUT, ROUND, SWAGE TYPE	SYMBOL	
STOCK SIZE	.051	THE TECHNICAL MATERIEL CORP. MAMARONECK, NEW YORK					
MATERIAL	ALUMINUM	SHELL, OVEN					
TYPE & TEMPER	5052 - H32	DRWN	John C. Bizle	ELEC. DES. APP.	J.C.	MECH. DES. APP.	
HEAT TREAT. SPEC.	S404 - IRIDITE	CHECKED	JCB	FINAL APPROVAL	MS-2214		
FINISH & SPEC. NO.							

ISSUE NO.		DESCRIPTION	DATE	CH. NO.	DRAFTS	CHECKER	ENG. APP.
1	D6	(1) 'A' HOLES RELOCATED	10-12-62	14-50			
TOLERANCES				SCALE: FULL DO NOT SCALE			
DEC. DIM. ±				MAXIMUM ALLOWABLE TOLERANCES HAVE BEEN DETERMINED AND ANY DEVIATIONS WILL BE CAUSE FOR REJECTION.			
FRAC. DIM. ± 1/64				REMOVE ALL BURRS AND SHARP EDGES			
ANGULAR DIM. ±							

MS-2214