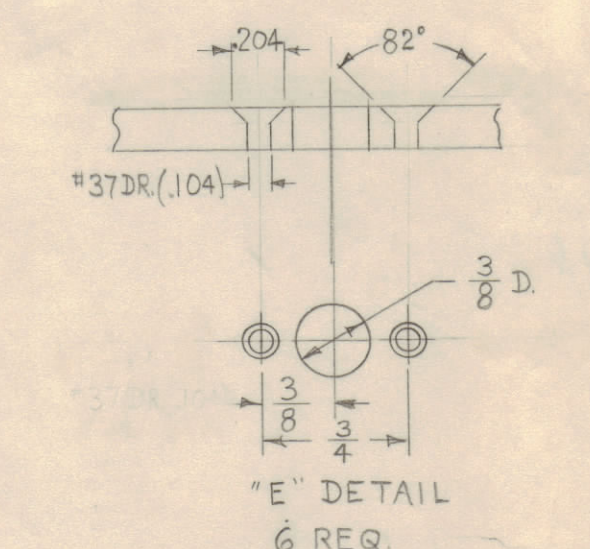
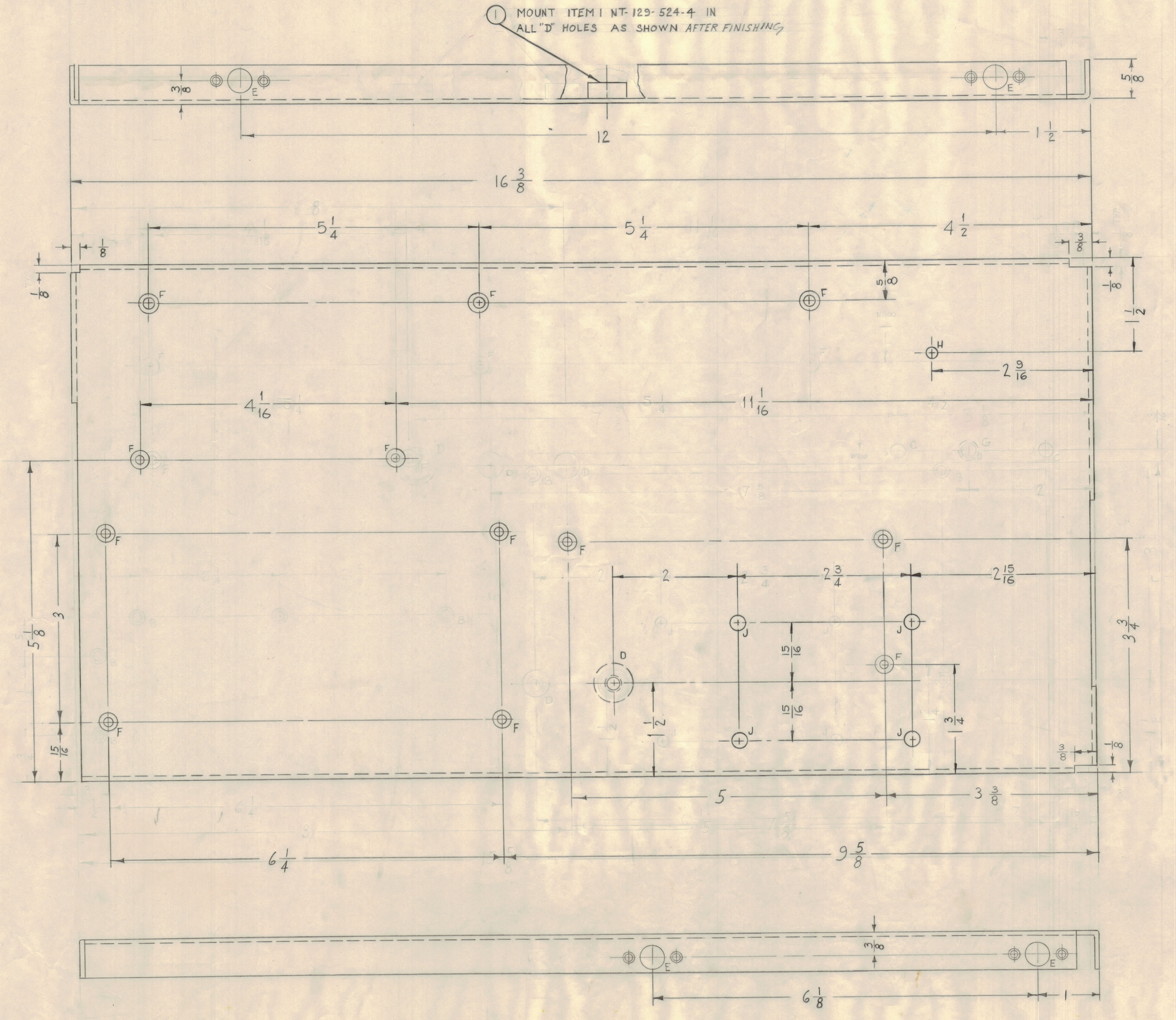


**NOTICE TO PERSONS RECEIVING THIS DRAWING**

THE TECHNICAL MATERIEL CORPORATION claims proprietary right in the material disclosed herein. This drawing is issued in confidence for engineering information only and may not be reproduced or used to manufacture anything shown hereon without permission from THE TECHNICAL MATERIEL CORPORATION to the user. This drawing is loaned for mutual assistance and is subject to recall at any time.

Property of:  
THE TECHNICAL MATERIEL CORPORATION  
MAMARONECK, NEW YORK

A- DELETED	Req.
B- DELETED	
C- 7/32 DIA	3 "
D- "Z" DR. (413) D FOR NT-129-524-4	1 "
E- SEE DETAIL	5 "
F- DR & C'SINK FOR G-32 F.H.S	12 "
G- DELETED - MAX DIA FOR	



H- 13/64 DIA.	1 Req
J- 221-224 DIA.	4 Req

NOTE:  
USE MATERIAL THICKNESS MAX. RADIUS ON ALL BENDS UNLESS OTHERWISE SPECIFIED.

E	05	DIM 2 1/2 WAS 4 1/8 ON "J" HOLES & "D" HOLE	4-26-61	4787	RU	10/25/61	
D	06	"D" HOLES RELOCATED	1/28/61	4787	RU	10/25/61	
C	07	"J" HOLES (14) HOLE ADDED	12/28/61	3823	RU	10/25/61	
B	08	"E" HOLES RELOCATED	11-23-61	3546	RU	10/25/61	
A	09	"C" HOLE CHANGED TO "G" HOLE	11-23-61	3546	RU	10/25/61	
		47 HOLES ADDED					
		23 DIMENSIONS CHANGED TO BEND LINE					
		122 1/2 DIA 1/8 NOTCH ADDED					
		1227 "E" HOLES DELETED (R-32 C.S.K)					
		1229 THREE "C" HOLES WERE "A" HOLES (12/14)					
ISSUE	ZONE	DESCRIPTION	DATE	CH. NO.	DRAFTS	CHECKER	ENG. APP.
TOLERANCES		SCALE:					
DEC. DIM. ±		MAXIMUM ALLOWABLE TOLERANCES HAVE BEEN DETERMINED AND ANY DEVIATIONS WILL BE CAUSE FOR REJECTION.					
FRAC. DIM. ±		REMOVE ALL BURRS AND SHARP EDGES					
ANGULAR DIM. ±							

4	3	NT-129-832-4	NUT ROUND, SWAGE TYPE	J
1	2	DELETED		
1	1	NT-129-524-4	NUT ROUND, SWAGE TYPE	D
REQ. ITEM	PART NO.	DESCRIPTION	SYMBOL	
.081		THE TECHNICAL MATERIEL CORP. MAMARONECK, NEW YORK		
STOCK SIZE		ALUMINUM		
MATERIAL		SIDE PLATE, LEFT		
5052-H32				
TYPE & TEMPER				
DRAWN		ELEC. DES. APP.		
CHECKED		MECH. DES. APP.		
HEAT TREAT SPEC.		5-3-60		
S404 YIELD STRENGTH		DATE		
FINISH		USED ON		
1		CHG-1	MAIN ASSY	5-3-60
REQ PER UNIT		MODEL	SECTION	ABBY. NO.
		DATE		
		HEAT TREAT SPEC.		
		S404 YIELD STRENGTH		
		FINISH		
		MS-2236		

MS-2236