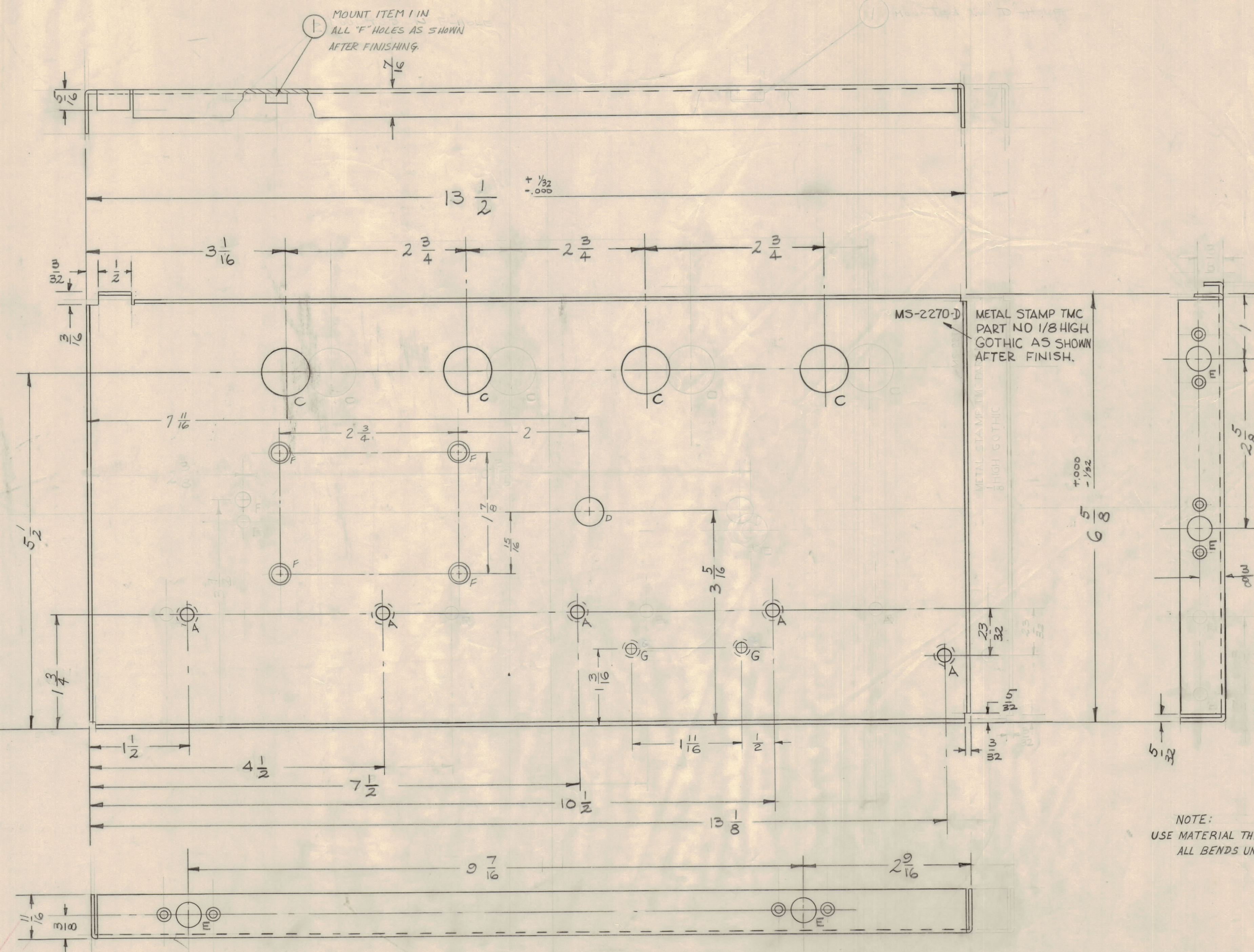


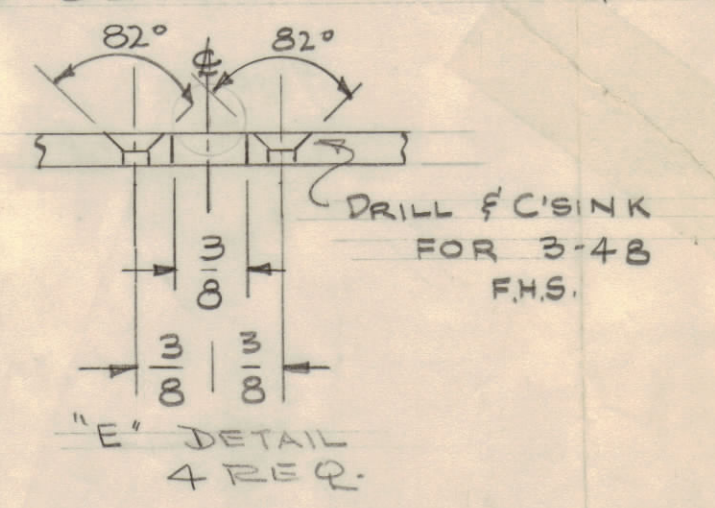
**NOTICE TO PERSONS RECEIVING THIS DRAWING**

THE TECHNICAL MATERIEL CORPORATION claims proprietary right in the material disclosed hereon. This drawing is issued in confidence for engineering information only and may not be reproduced or used to manufacture anything shown hereon without permission from THE TECHNICAL MATERIEL CORPORATION to the user. This drawing is loaned for mutual assistance and is subject to recall at any time.

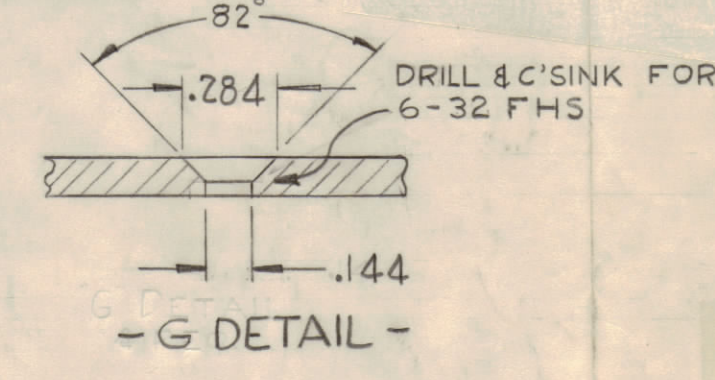
Property of:  
THE TECHNICAL MATERIEL CORPORATION  
MAMARONECK, NEW YORK



- HOLE
- A - C'SNK FOR 8-32
  - B - 13/64 X 13/32 SLOTS 3
  - C - 3/4 (.75) D 4
  - D - 7/16 DIA 1
  - E - SEE DETAIL 4



- F - .224-.221 DIA 4-REQ
- G - SEE DETAIL 2-REQ



NOTE:  
USE MATERIAL THICKNESS FOR MAX. RADIUS ON ALL BENDS UNLESS OTHERWISE SPECIFIED.

ISSUE	ZONE	DESCRIPTION	DATE	CH. NO.	DRAFTS	CHECKER	ENG. APP.
D	1	10-8-60	1360				
A	2	11-8-61	5743				
B	3	10-17-60	5220				
A	5	9-29-60	3099				

SCALE: FULL

MAXIMUM ALLOWABLE TOLERANCES HAVE BEEN DETERMINED AND ANY DEVIATIONS WILL BE CAUSE FOR REJECTION. REMOVE ALL BURRS AND SHARP EDGES.

REQ PER UNIT	MODEL	SECTION	USED ON
1	DVM-3		2-1-62
1	DVM-2		5-12-60

REQ. ITEM	PART NO.	DESCRIPTION	SYMBOL
2	DELETED		
4	NT-129-832-4	NUT, ROUND SWAGE TYPE	
.064		THE TECHNICAL MATERIEL CORP. MAMARONECK, NEW YORK	
ALUMINUM		LEFT SIDE PLATE	
5052-H32		DATE: 2-1-62	
TYPE & TEMPER		DRAWN: J. J. J.	
HEAT TREAT. SPEC.		ELEC. DES. APP.:	
5404 YEL. IRIDITE		MECH. DES. APP.:	
FINISH & SPEC. NO.		CHECKED: J. J. J.	
		FINAL APPROVAL: J. J. J.	
		MS-2270 D	

MS-2270 D