

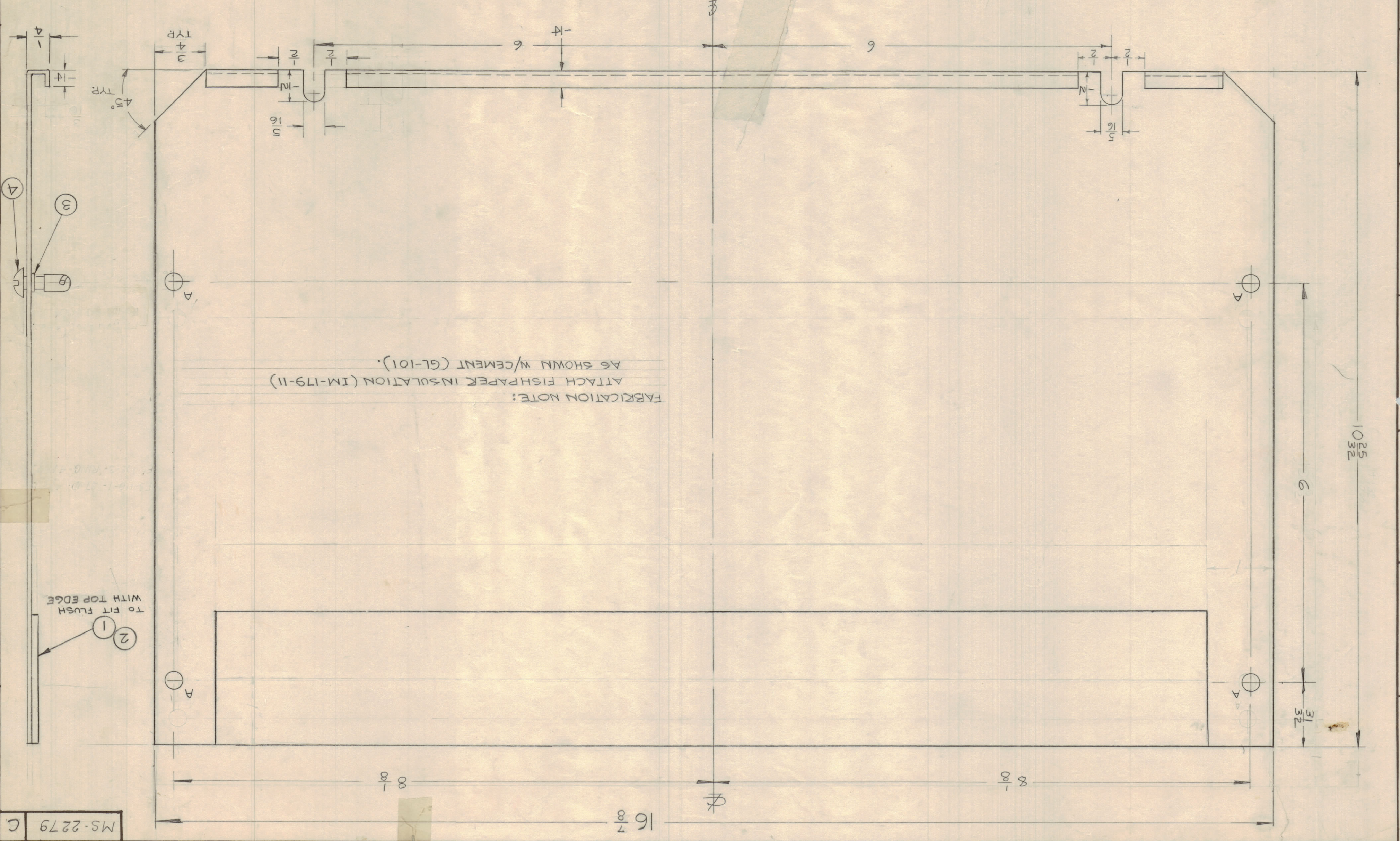
DEC. DIM. \pm 1/64		ANGULAR DIM. \pm 1/64	
MAXIMUM ALLOWABLE TOLERANCES HAVE BEEN DETERMINED AND DEVIATIONS WILL BE CAUSE FOR REJECTION.			
REMOVE ALL BURRS AND SHARP EDGES			
TOLERANCES			
ISSUE	ZONE	DESCRIPTION	DATE
A	1	LIP REVISED	8-17-60
A	1	DIMENSIONS REVISED	8-17-60
B	1	REAR VIEW DELETED, HOLE LEGEND ADDED	11/4/64
B	1	BUILDUP ADDED, FACE NOTE ADDED	10/14/64
C	1	SIDE VIEW - 1/4 DIM ADDED, 3/16 DELETED	7-16-64
C	2	ITEM (1) & (2) RELOCATED	7-16-64
SCALE: FULL			
MAXIMUM ALLOWABLE TOLERANCES HAVE BEEN DETERMINED AND DEVIATIONS WILL BE CAUSE FOR REJECTION.			
REMOVE ALL BURRS AND SHARP EDGES			

REQ. PER UNIT	MODEL	SECTION	ASSY. NO.	DATE	FINISH & SPEC. NO.
1	CBE-1			5-20-60	5404 YELL. IRIDITE
1	CBE-2			1-14-64	HEAT TREAT. SPEC.
					5052-H32
					TYPE & TEMPER
					MATERIAL
					ALUMINUM
					STOCK SIZE
					.051
					THE TECHNICAL MATERIEL CORP.
					MAMARONECK, NEW YORK
					COVER BOTTOM
					DRAWN
					ELEC. DES. APP.
					MECH. DES. APP.
					CHECKED
					FINAL APPROVAL
					MS-2279

REQ. ITEM	PART NO.	DESCRIPTION	SYMBOL
4	FS-110-1	STUD, TURNLOCK	
4	FS-109-3	RING, RETAINER	
X 2	GL-101	CEMENT, FLUID BOND	
1	IM-179-11	INSULATION, RECT, FISHPAPER	

HOLE DESCRIPTION	REQ.
A 1/4 DIA	4

HOLE LEGEND



MS-2279