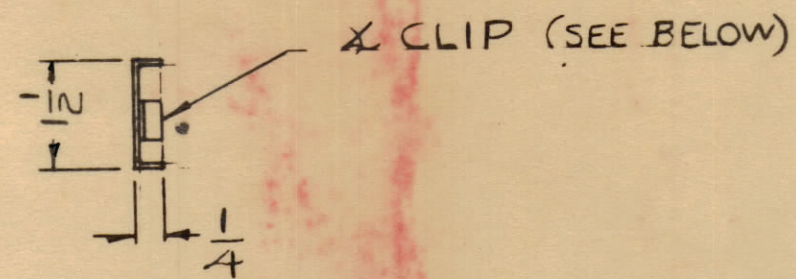
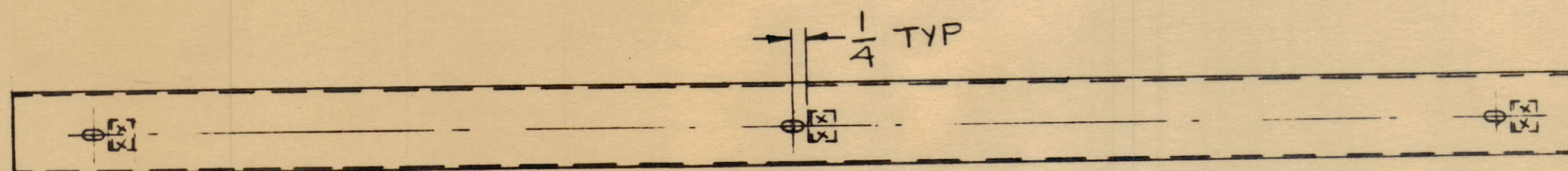
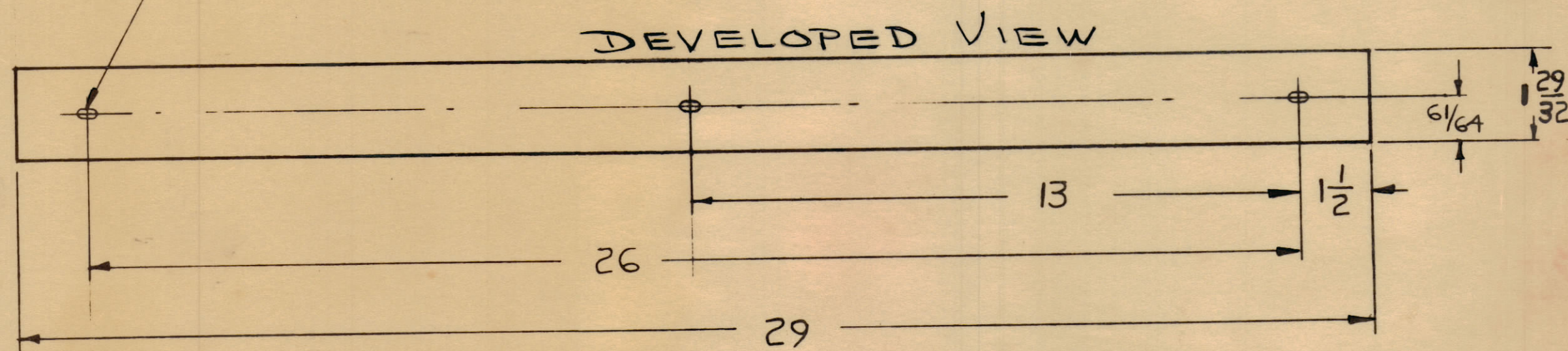


IF IT IS FOUND DESIRABLE TO CHANGE ANY TOLERANCE OR OTHER DETAIL SPECIFIED ON THIS DRAWING NOTIFY THE PURCHASER PROMPTLY.

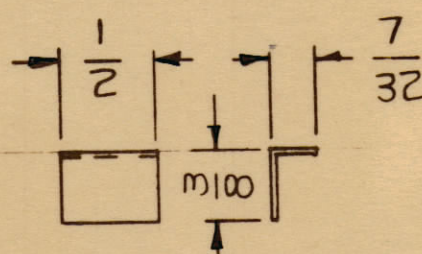
MAXIMUM ALLOWABLE TOLERANCES HAVE BEEN DETERMINED AND DEVIATIONS WILL BE CAUSE FOR REJECTION. REMOVE ALL BURRS AND SHARP EDGES.



(3) .187 X .250 OVAL SLOTS



MS-2300 A



DEV. SIZE: 1/2 X 7/32

(3 PER UNIT)

X CLIP

UNLESS OTHERWISE SPECIFIED DIMENSIONS ARE IN INCHES AND INCLUDE CHEMICALLY APPLIED OR PLATED FINISHES

DECIMALS	TOLERANCES	FRACTIONS
.X ± .05		± 1/64
.XX ± .01		ANGLES ± 0° 30'
.XXX ± .005		

CUT HERE GUARANTEED 2-46

ISSUE	ITEM	CHANGED FROM	DATE	CH. NO.	DRAFTS	CHECKER	ENG. APP.
A		FINISH S521 WAS S115	5-21-66	16237	N/A	CCP	803

TOLERANCES		SCALE:
ALL OTHERS	DEC. DIM. ± FRAC. DIM. ± ANGULAR DIM ±	DRILL PUNCH, COMMERCIAL STOCK SIZES AND MANUFACTURERS TOLERANCES ARE NOT INCLUDED.

REQ. PER UNIT	MODEL	PROJECT NO.	ASSY. NO.	DATE
1	GPT-40K	AP-102		6-14-60

REQ. ITEM	PART NO.	DESCRIPTION	SYMBOL
#20 GAUGE		THE TECHNICAL MATERIEL CORP. MAMARONECK, NEW YORK	
STEEL		TRIM CENTER REAR PA FRAME	
MATERIAL	WEIGHT PER PC.		
		WF	AK
TYPE & TEMPER	DRAWN	ELEC. DES. APP.	MECH. DES. APP.
	HQ		DR
HEAT TREAT. SPEC.	CHECKED	FINAL APPROVAL	
S114 ZINC CHROMATE S521 TEX GRAY ENAMEL			MS-2300 A
FINISH & SPEC. NO.			