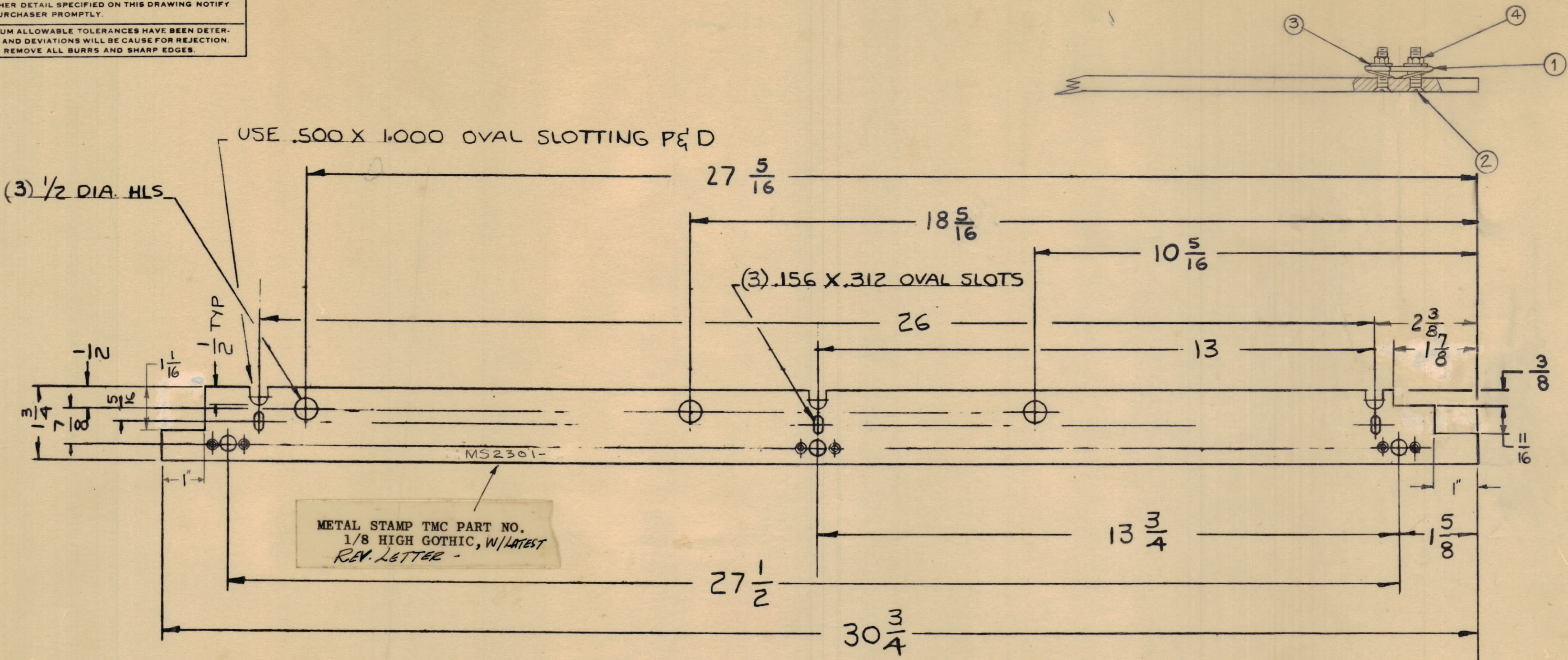
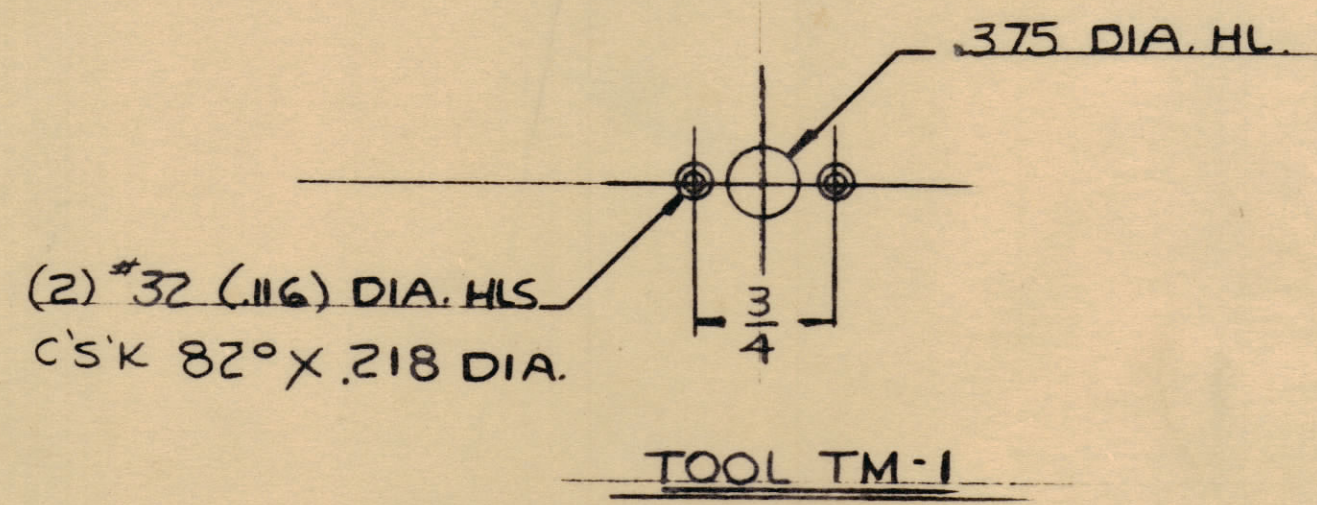


IF IT IS FOUND DESIRABLE TO CHANGE ANY TOLERANCE OR OTHER DETAIL SPECIFIED ON THIS DRAWING NOTIFY THE PURCHASER PROMPTLY.

MAXIMUM ALLOWABLE TOLERANCES HAVE BEEN DETERMINED AND DEVIATIONS WILL BE CAUSE FOR REJECTION. REMOVE ALL BURRS AND SHARP EDGES.



METAL STAMP TMC PART NO.  
1/8 HIGH GOTHIC, W/LATEST  
REV. LETTER -



MS 2301 D

ISSUE	ITEM	CHANGED FROM	DATE	CH. NO.	DRAFTS	CHECKER	ENG. APP.
D		IT. 2 WAS "SCF50348BN8"	3-3-67	17875	HHA	CB	
C	1	ADDED NOTCHES TO STRIP TMC PART NO ADDED	1/16/64	10301	RU	CB	
B	3	Dim 27 5/16 WAS 24, 18 5/16 WAS 15 10 5/16 WAS 7	12/27/60	3811	RU	CB	
B	2	3/8 x 1/8 NOTCH ADDED					
B	1	(2) 1/2 D. HOLES DELETED					
A	1	ITEMS 1, 2, 3, 4 ADDED	10/11/60	3197	RU	CB	

TOLERANCES		SCALE:
ALL	DEC. DIM. ±	DRILL, PUNCH, COMMERCIAL STOCK
OTHERS	FRAC. DIM. ±	SIZES AND MANUFACTURERS
	ANGULAR DIM. ±	TOLERANCES ARE NOT INCLUDED.

6	4	NTH0348BN6	NUT	
6	3	LWS03MRN	LOCKWASHER	
6	2	SCFP0348BN8	SCREW	
3	1	FS-102-1	SPRING TYPE S-CLIP	
REQ. ITEM	PART NO.		DESCRIPTION	SYMBOL
		.125	THE TECHNICAL MATERIEL CORP. MAMARONECK, NEW YORK	
		ALUMINUM	TOP STRIP REAR SHIELD	
		5052-H32	PA FR	
		WF	WF	
		DR	ELEC. DES. APP.	MECH. DES. APP.
		HEAT TREAT. SPEC.	FINAL APPROVAL	
		5404	MS-2301 D	
		FINISH & SPEC. NO.		

1	GPT-40K	AP-102	6-14-60
REQ. PER UNIT	MODEL	PROJECT NO.	DATE
	ASSY. NO.		
USED ON			