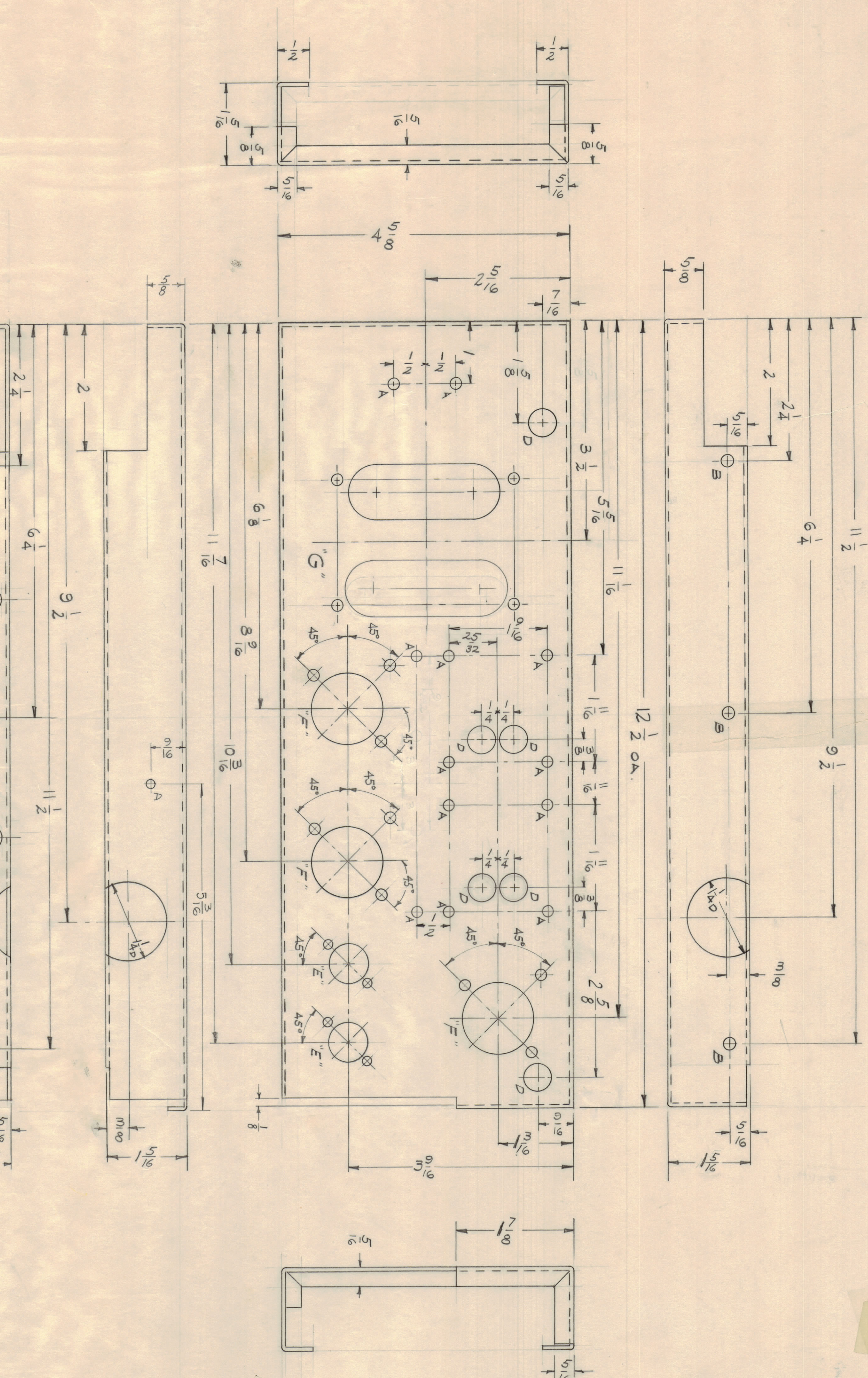


NOTICE TO PERSONS RECEIVING THIS DRAWING
 THE TECHNICAL MATERIAL CORPORATION claims
 proprietary right in the material disclosed herein.
 This drawing is made in confidence for engineering
 information only and may not be reproduced or used
 to manufacture any hardware without written per-
 mission from THE TECHNICAL MATERIAL CORPORA-
 tion to the contrary. This drawing is hereby for mutual
 assistance and is subject to recall at any time.

Property of:
 THE TECHNICAL MATERIAL CORPORATION
 MANHATTAN, NEW YORK



REV	DESCRIPTION	DATE	BY	CHKD
17	2.5/8" DIA. W/SL. 4.3/8" (PARTIAL VIEW)	2-27-61	6040	JS
16	3/8" DIA. W/SL. 6.7/8" (SECTION VIEW)			
15	3/8" DIA. W/SL. 6.7/8" (SECTION VIEW)			
14	3/8" DIA. W/SL. 6.7/8" (SECTION VIEW)			
13	3/8" DIA. W/SL. 6.7/8" (SECTION VIEW)			
12	3/8" DIA. W/SL. 6.7/8" (SECTION VIEW)			
11	3/8" DIA. W/SL. 6.7/8" (SECTION VIEW)			
10	3/8" DIA. W/SL. 6.7/8" (SECTION VIEW)			
9	3/8" DIA. W/SL. 6.7/8" (SECTION VIEW)			
8	3/8" DIA. W/SL. 6.7/8" (SECTION VIEW)			
7	3/8" DIA. W/SL. 6.7/8" (SECTION VIEW)			
6	3/8" DIA. W/SL. 6.7/8" (SECTION VIEW)			
5	3/8" DIA. W/SL. 6.7/8" (SECTION VIEW)			
4	3/8" DIA. W/SL. 6.7/8" (SECTION VIEW)			
3	3/8" DIA. W/SL. 6.7/8" (SECTION VIEW)			
2	3/8" DIA. W/SL. 6.7/8" (SECTION VIEW)			
1	3/8" DIA. W/SL. 6.7/8" (SECTION VIEW)			

TOLERANCES
 UNLESS OTHERWISE SPECIFIED
 DECIMAL DIM. W/SL. 8 1/2 DIA.
 FRACTIONAL DIM. W/SL. 8 1/2 DIA.
 HOLE DIA. W/SL. 8 1/2 DIA.

SCALE: 20 X 1 = 1" (AS SHOWN)
 DRAWING: 124
 DATE: 7-15-60
 CHECKER: JEG. AM.
 ENGINEER: JEG. AM.

MAINTENANCE AND REPAIR PARTS
 WILL BE CALLED FOR BY SECTION
 REMOVE ALL DIMS AND DIMS' EGGS

REF: (4) LD- (TIS-3)
 LD-753 (FOR AFC-1)

USE MATERIAL THICKNESS FOR MAX. RADIUS
 ON ALL BENDS UNLESS OTHERWISE SPECIFIED

NO. PART NO. DESCRIPTION SYMBOL

'064 ALUMINUM CHASSIS, POWER SUPPLY

MATERIAL: ALUMINUM
 TYPE & TREATMENT: 5052-H-32

HEAT TREAT. SPEC.: 400-450 F.
 FINISH & BEC. NO.: S404-YEL. IRIDITE

DRAWN BY: JEG. AM.
 CHECKED BY: JEG. AM.

DATE: 7-25-60

HEAT TREAT. SPEC.: 400-450 F.
 FINISH & BEC. NO.: S404-YEL. IRIDITE

MAINTENANCE AND REPAIR PARTS
 WILL BE CALLED FOR BY SECTION
 REMOVE ALL DIMS AND DIMS' EGGS

SCALE: 20 X 1 = 1" (AS SHOWN)
 DRAWING: 124
 DATE: 7-15-60
 CHECKER: JEG. AM.
 ENGINEER: JEG. AM.

TOLERANCES
 UNLESS OTHERWISE SPECIFIED
 DECIMAL DIM. W/SL. 8 1/2 DIA.
 FRACTIONAL DIM. W/SL. 8 1/2 DIA.
 HOLE DIA. W/SL. 8 1/2 DIA.

MAINTENANCE AND REPAIR PARTS
 WILL BE CALLED FOR BY SECTION
 REMOVE ALL DIMS AND DIMS' EGGS

SCALE: 20 X 1 = 1" (AS SHOWN)
 DRAWING: 124
 DATE: 7-15-60
 CHECKER: JEG. AM.
 ENGINEER: JEG. AM.

TOLERANCES
 UNLESS OTHERWISE SPECIFIED
 DECIMAL DIM. W/SL. 8 1/2 DIA.
 FRACTIONAL DIM. W/SL. 8 1/2 DIA.
 HOLE DIA. W/SL. 8 1/2 DIA.

MAINTENANCE AND REPAIR PARTS
 WILL BE CALLED FOR BY SECTION
 REMOVE ALL DIMS AND DIMS' EGGS

SCALE: 20 X 1 = 1" (AS SHOWN)
 DRAWING: 124
 DATE: 7-15-60
 CHECKER: JEG. AM.
 ENGINEER: JEG. AM.