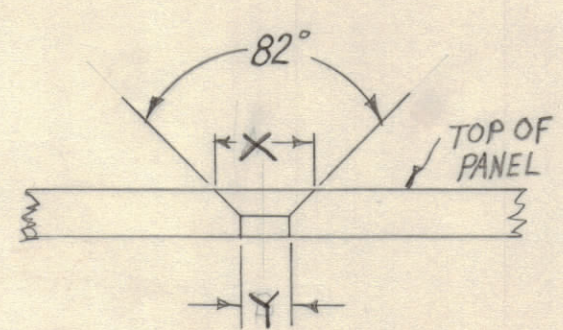
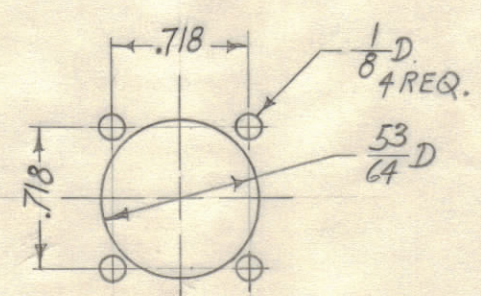


DIM.	# 3 F.H.S.	# 6 F.H.S.
X	.204	.284
Y	#47 (.078) TAP 3-48	#27 (.144)



C' SINK DETAIL "A" & "B".



"F" DETAIL 10 REQ.

FINISH: FRONT & EDGES ONLY.
 S404 YELLOW IRIDITE.
 S114 ZINC CHROMATE PRIMER.
 S115 SMOOTH GREY ENAMEL.

- NOTES:
- 1-LATERAL BOW OF PANEL MUST BE KEPT TO .031 TOLERANCE.
 - 2-MILL ALL EDGES.
 - 3-HOLES MUST BE DRILLED.
 - 4-PANEL MUST BE FREE OF ALL MACHINING MARKS GOUGES & SCRATCHES.
IF NECESSARY SAND FRONT OF PANEL WITH NO. 120 GRIT SANDPAPER.
 - 5-ALL THREADED HOLES & HOLE DIA. MUST BE HELD AFTER ETCHING.

- A~ DR. & TAP & C'SINK FOR 3-48 F.H.S. (SEE DETAIL) 12 REQ
- B~ DR. & C'SINK FOR 6-32 F.H.S. (SEE DETAIL) 12 "
- C~ 13/16 DIA. 12 "
- D~ .078 DIA. 3 "
- E~ 1/4 X 13/32 SLOT 4 "
- F~ SEE DETAIL 10 "

UNLESS OTHERWISE SPECIFIED
 DIMENSIONS ARE IN INCHES AND INCLUDE
 CHEMICALLY APPLIED OR PLATED FINISHES

DECIMALS	FRACTIONS
.x ± .05	± 1/64
.xx ± .01	ANGLES ± 0° 30'
.xxx ± .005	

TOLERANCES

CUT HERE GUARANTEED 2-66

ISSUE	ZONE	DESCRIPTION	DATE	CH. NO.	DRAFTS	CHECKER	ENG. APP.
TOLERANCES							
SCALE: Full							
DEC. DIM. ±							
FRAC. DIM. ± 1/64							
ANGULAR DIM. ±							
MAXIMUM ALLOWABLE TOLERANCES HAVE BEEN DETERMINED AND ANY DEVIATIONS WILL BE CAUSE FOR REJECTION. REMOVE ALL BURRS AND SHARP EDGES							

REQ PER UNIT	MODEL	SECTION	ASSY. NO.	DATE
1	SPP-13			8-20-60

REQ. ITEM	PART NO.	DESCRIPTION	SYMBOL
3/16		THE TECHNICAL MATERIEL CORP.	
		MAMARONECK. NEW YORK	
		ALUMINUM	
		FRONT PANEL	
		SPP-13	
		2025-T3	
		TYPE & TEMPER	
		HEAT TREAT. SPEC.	
		SEE NOTE	
		FINISH & SPEC. NO.	
		DRAWN	
		ELEC. DES. APP.	
		MECH. DES. APP.	
		CHECKED	
		FINAL APPROVAL	
		MS-2370	