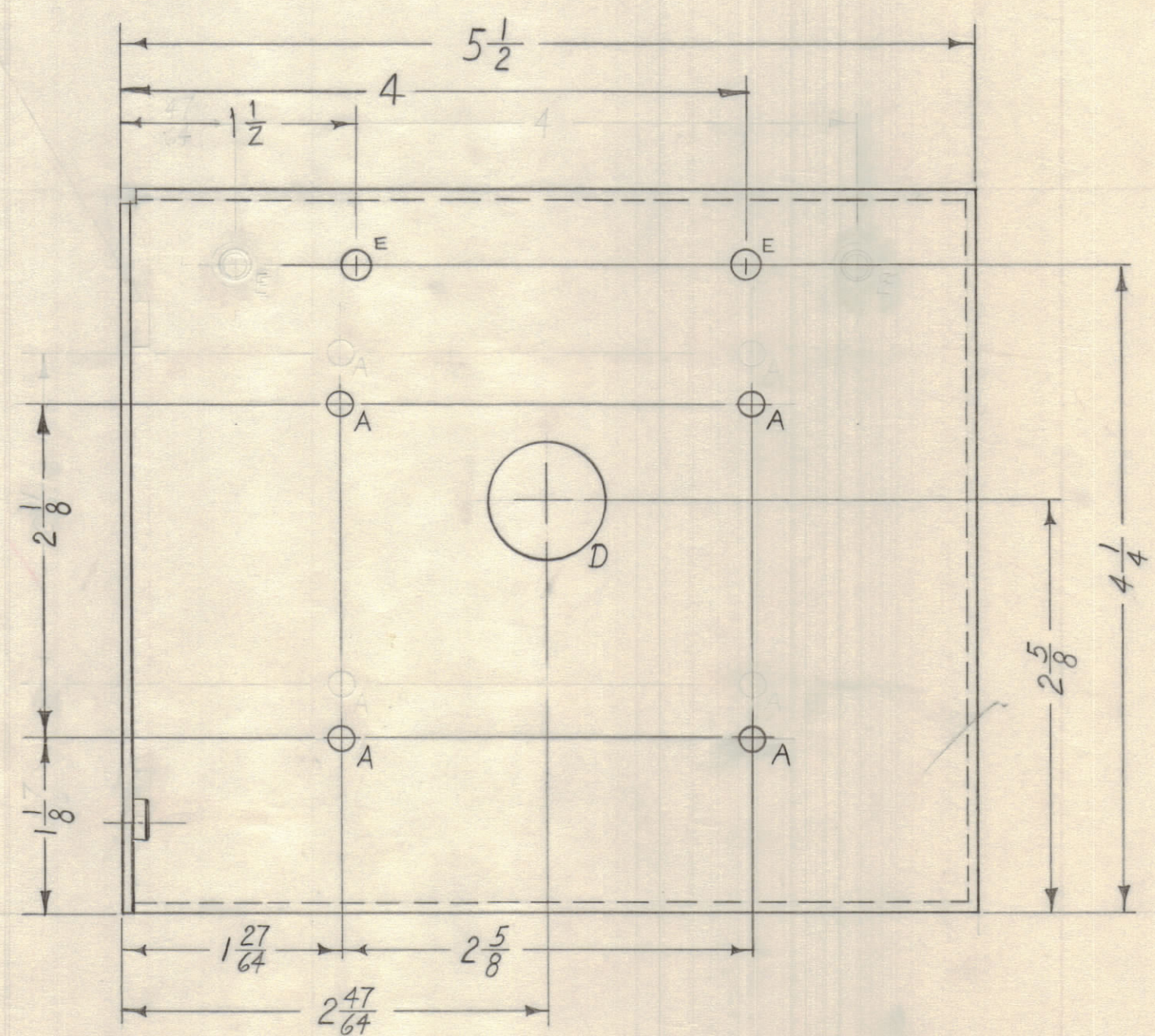


1 MOUNT ITEM 1 NT-129-632-4 IN ALL "E" HOLES. AFTER FINISHING

1 MOUNT ITEM 1 IN ALL "E" HOLES.

- A- $\frac{5}{32}$ DIA. 4 REQ.
- B- $\frac{11}{64} \times \frac{11}{32}$ SLOT 1 "
- C- $\frac{13}{64}$ DIA. 2 "
- D- $\frac{3}{4}$ DIA. 1 "
- E-.191-.194 D. (FOR NT-129-632-4) 13 "



13	1	NT-129-632-4	NUT, ROUND, SWAGE TYPE
REQ. ITEM	PART NO.	DESCRIPTION	
	.064	THE TECHNICAL MATERIEL CORP.	
	STOCK SIZE	MAMARONECK, NEW YORK	
	ALUMINUM	SHELL, OUTER OVEN	
	MATERIAL		
	5052-H32		
	TYPE & TEMPER		
	HEAT TREAT. SPEC.		
	S-404 IRIDITE	FINISH & SPEC. NO.	

B	3	RELOCATED ONE (1) "C" HOLE	11-28-60	3600	DM	JCB	
A	D3	2 "E" HOLES RELOCATED	11-4-60	3379			
ISSUE ZONE		DESCRIPTION	DATE	CH. NO.	DRAFTS	CHECKER	ENG. APP.
		TOLERANCES	SCALE: FULL				
		DEC. DIM. \pm	MAXIMUM ALLOWABLE TOLERANCES HAVE BEEN DETERMINED AND ANY DEVIATIONS WILL BE CAUSE FOR REJECTION.				
		FRAC. DIM. \pm 1/64	REMOVE ALL BURRS AND SHARP EDGES				
		ANGULAR DIM. \pm					

1	CHG-1	OVEN/OSC	9-15-60
REQ PER UNIT	MODEL	SECTION	ASSY. NO.
			DATE