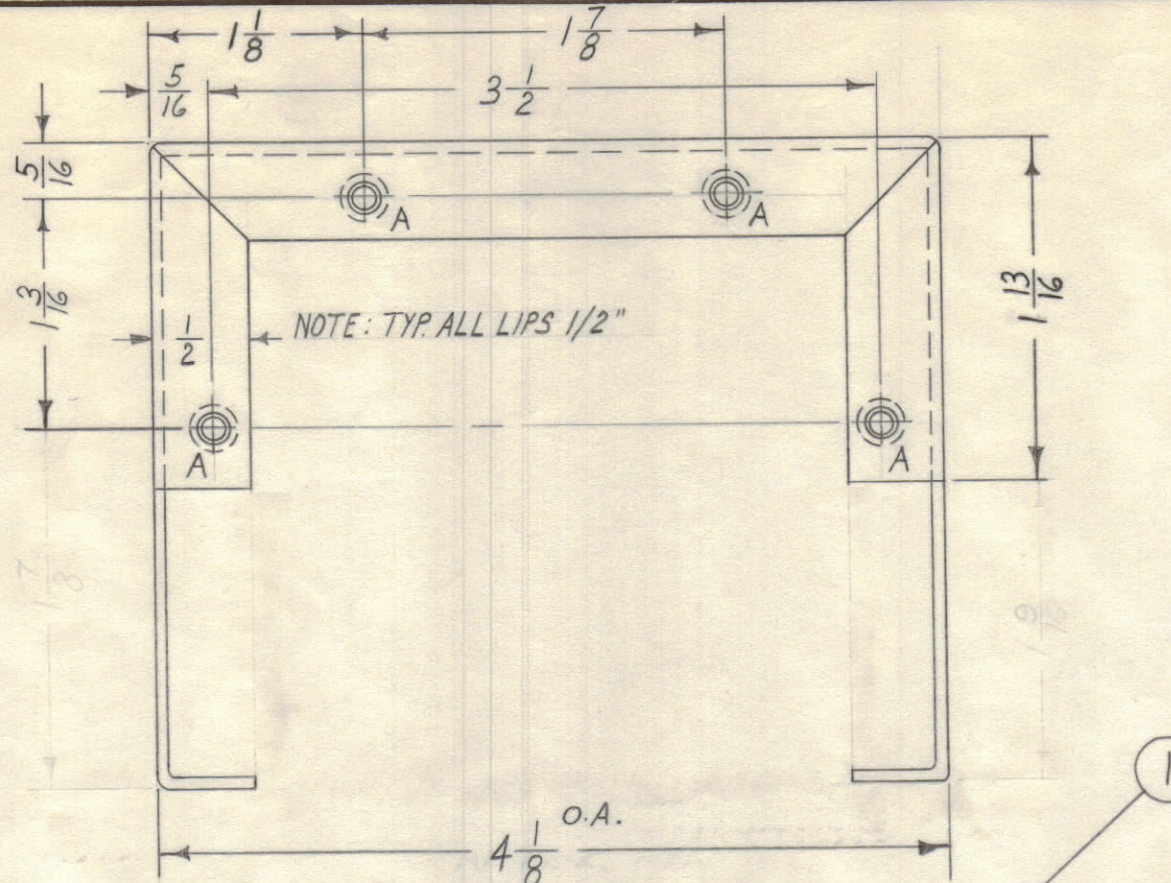
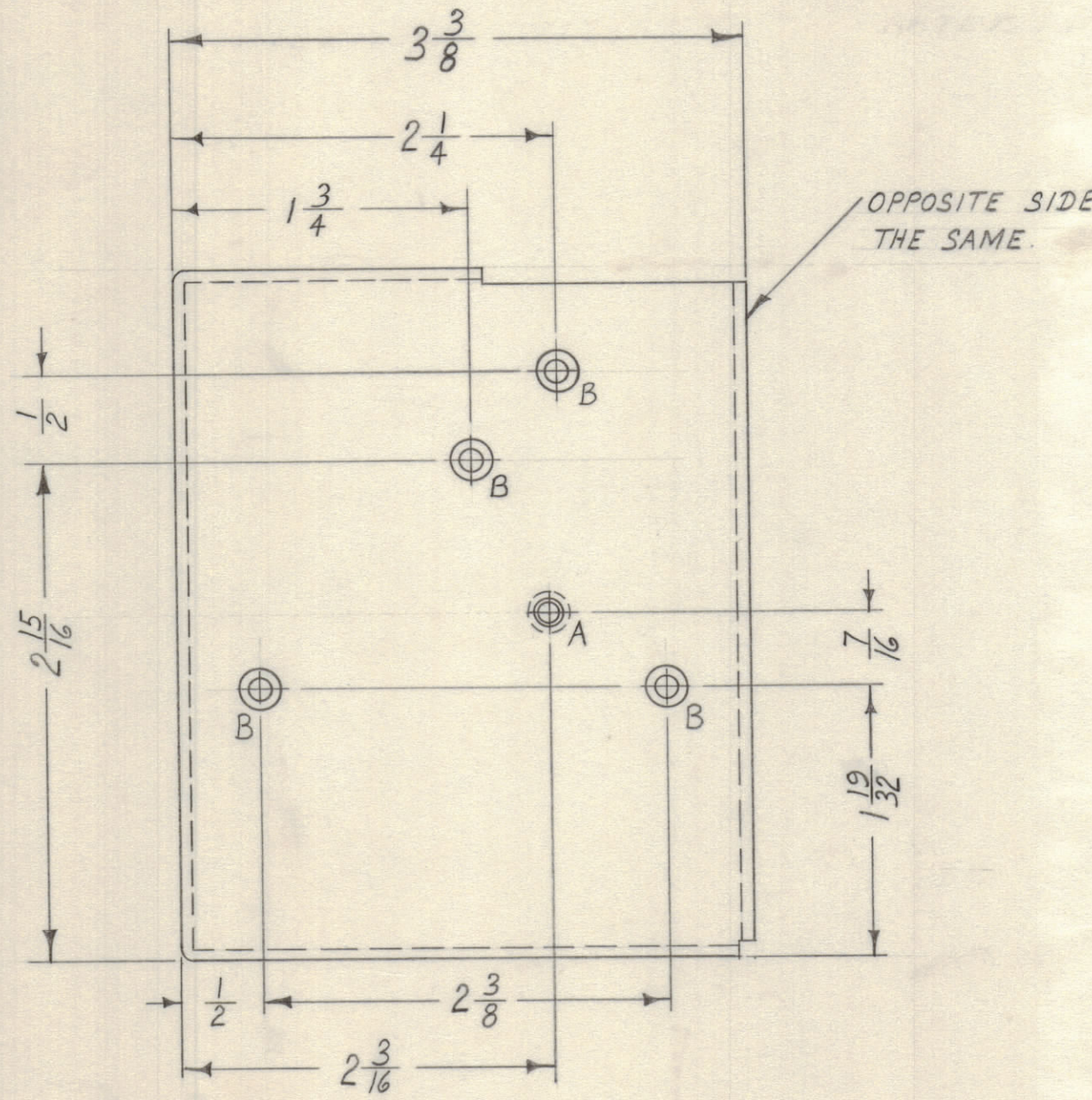
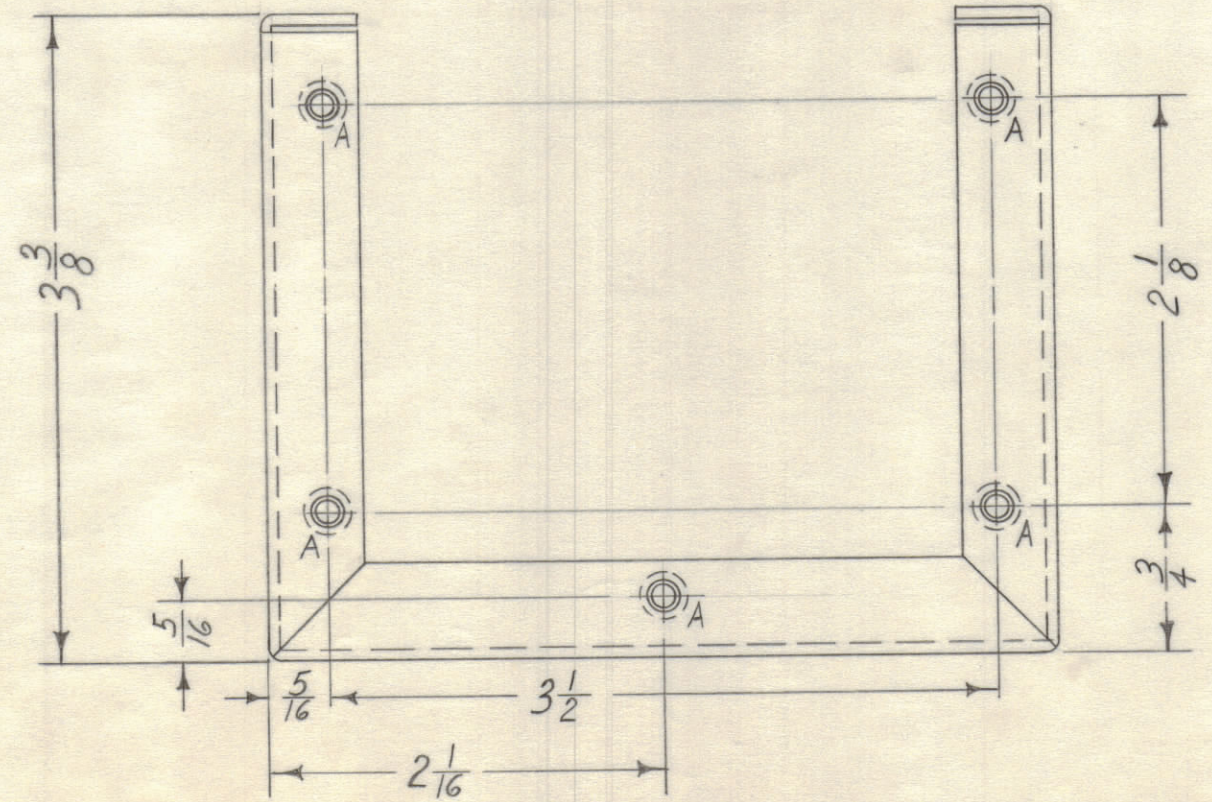
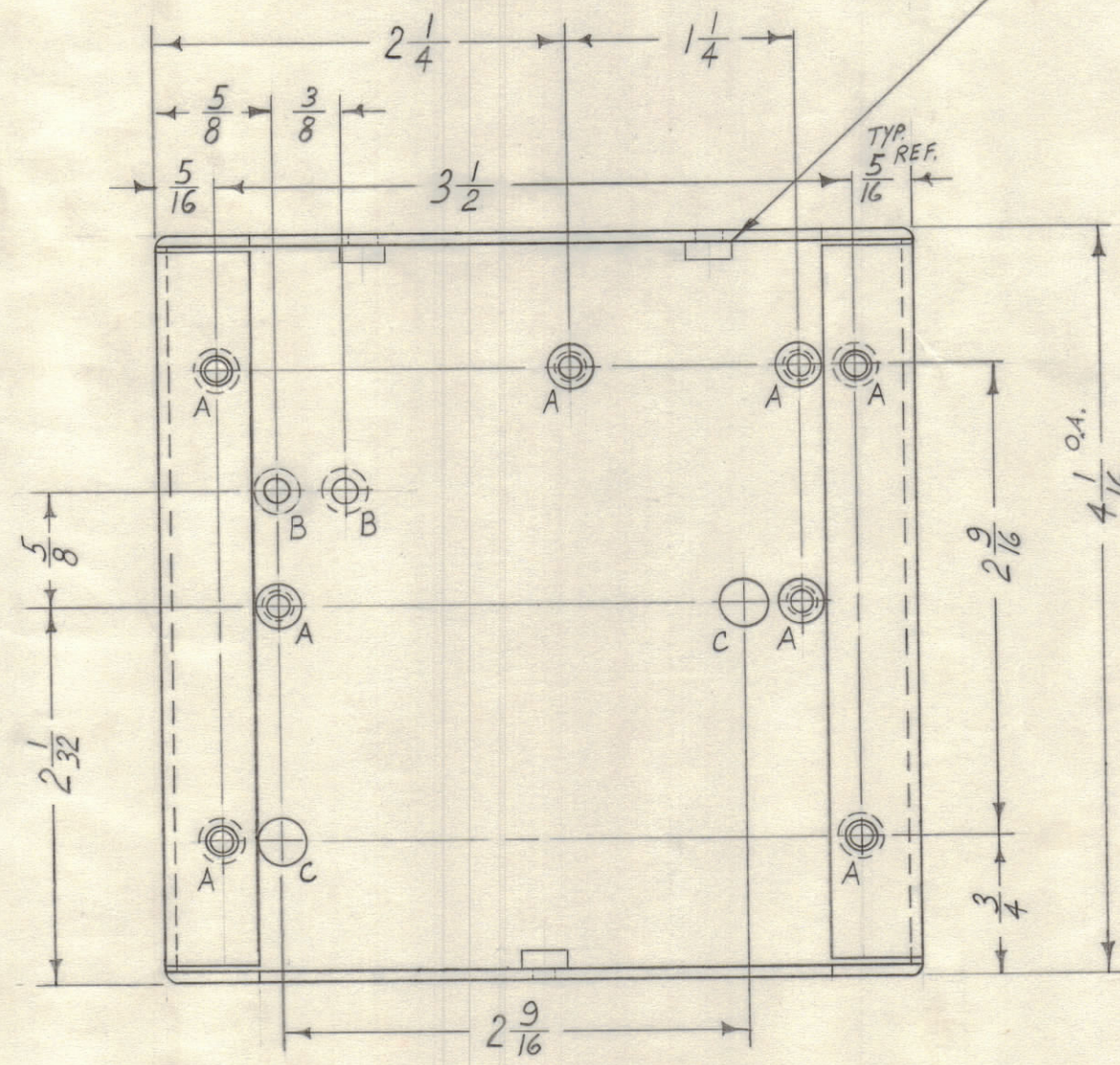


A-.161-.164 D. (FOR NT-129-440-4) 19 REQ.
 B- DR. & C'SINK FOR 4-40 10 "
 C ~ 1/4 DIA. 2 "



① MOUNT ITEM 1 IN ALL "A" HOLES. AFTER FINISHING



19	1	NT-129-440-4	NUT, ROUND, SWAGE TYPE
REQ. ITEM	PART NO.		DESCRIPTION
	.064		THE TECHNICAL MATERIEL CORP.
	STOCK SIZE		MAMARONECK, NEW YORK
	ALUMINUM		SHELL, OVEN, INNER
	MATERIAL		
	5052-H32		
	TYPE & TEMPER		
	HEAT TREAT. SPEC.		
	S404 YELL. IRIDITE		
	FINISH & SPEC. NO.		

1	CHG-1	OVEN/OSC	9-15-60
REQ PER UNIT	MODEL	SECTION	ASS'Y. NO.

ISSUE ZONE	DESCRIPTION	DATE	CH. NO.	DRAFTS	CHECKER	ENG. APP.
TOLERANCES		SCALE: FULL				
DEC. DIM. ± 1/64		MAXIMUM ALLOWABLE TOLERANCES HAVE BEEN DETERMINED AND ANY DEVIATIONS WILL BE CAUSE FOR REJECTION. REMOVE ALL BURRS AND SHARP EDGES				
FRAC. DIM. ± 1/64						
ANGULAR DIM. ±						