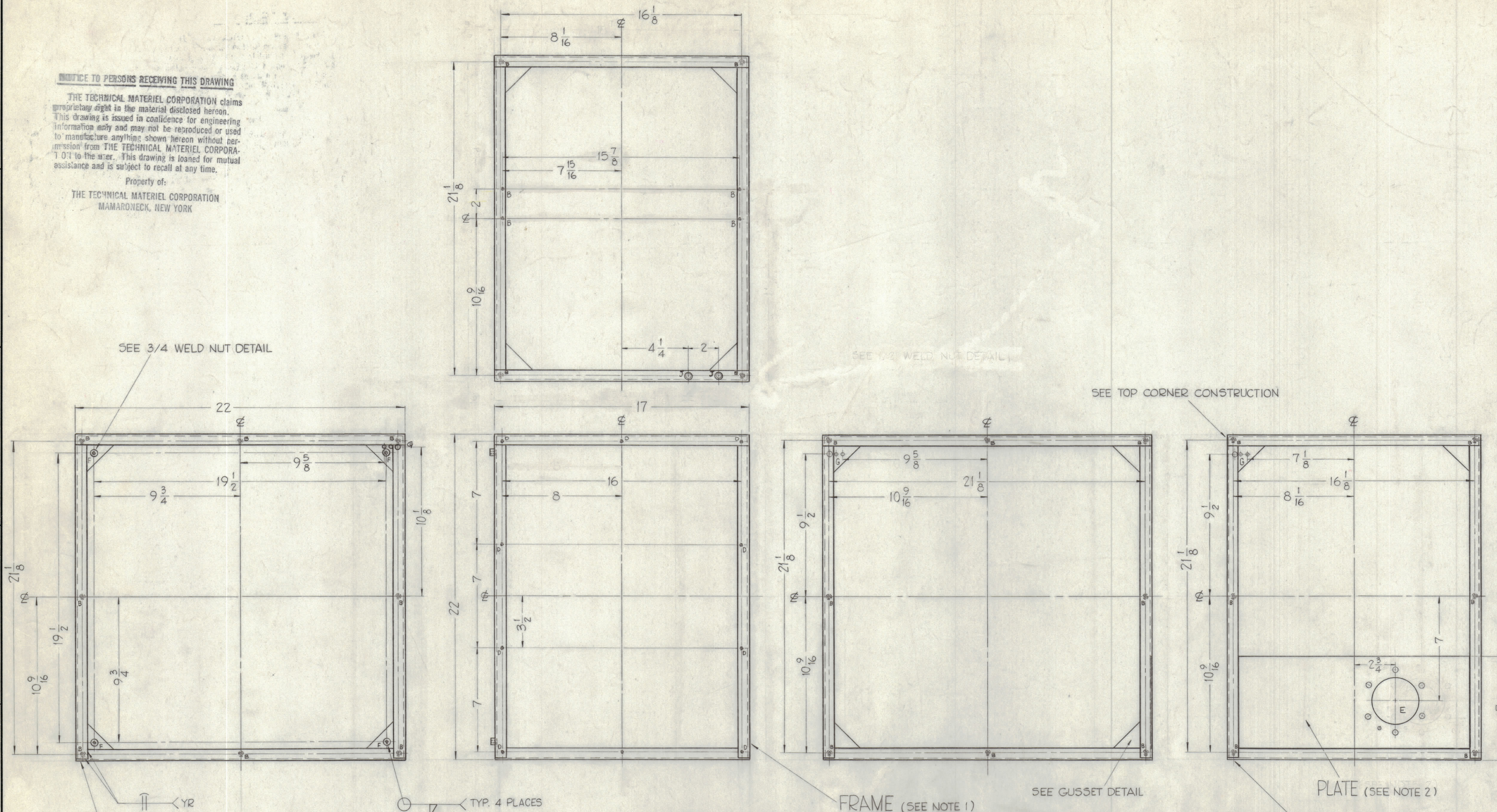


**NOTICE TO PERSONS RECEIVING THIS DRAWING**

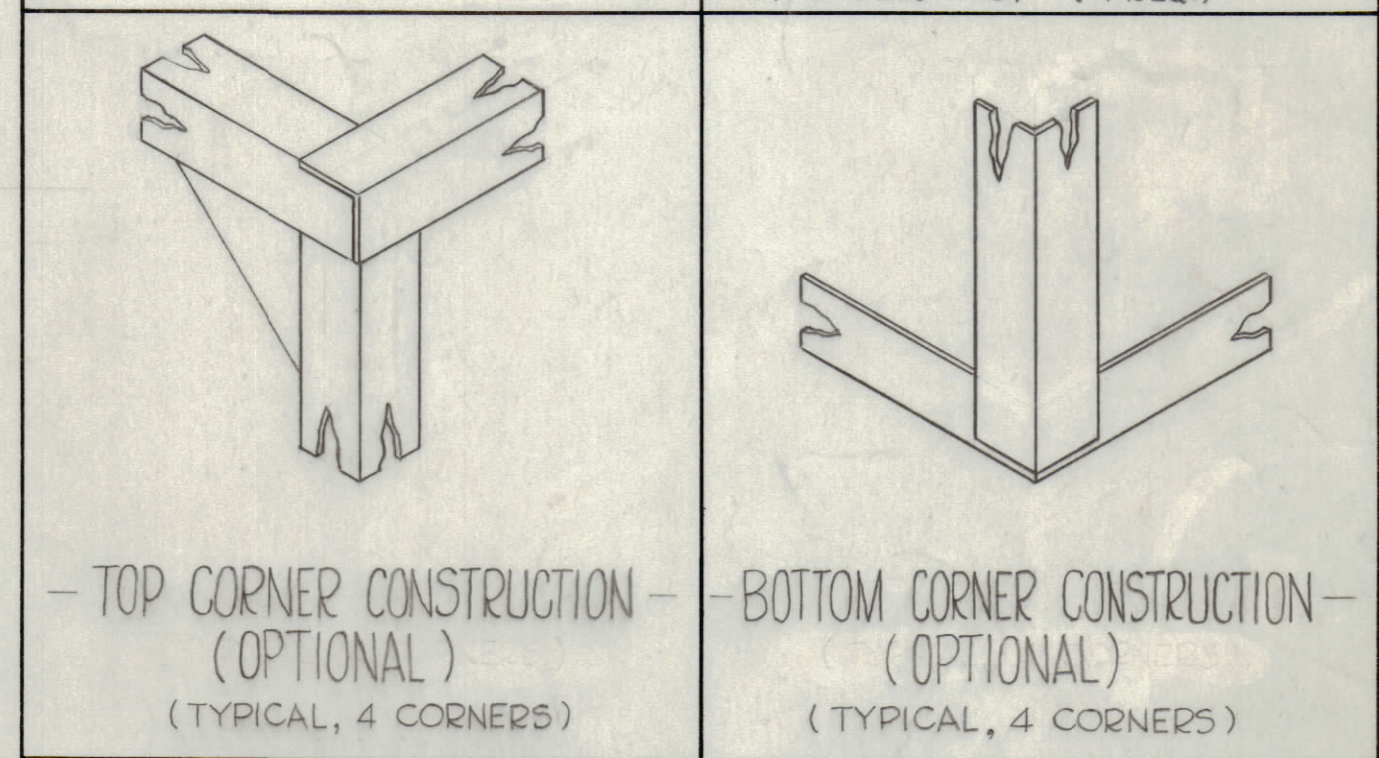
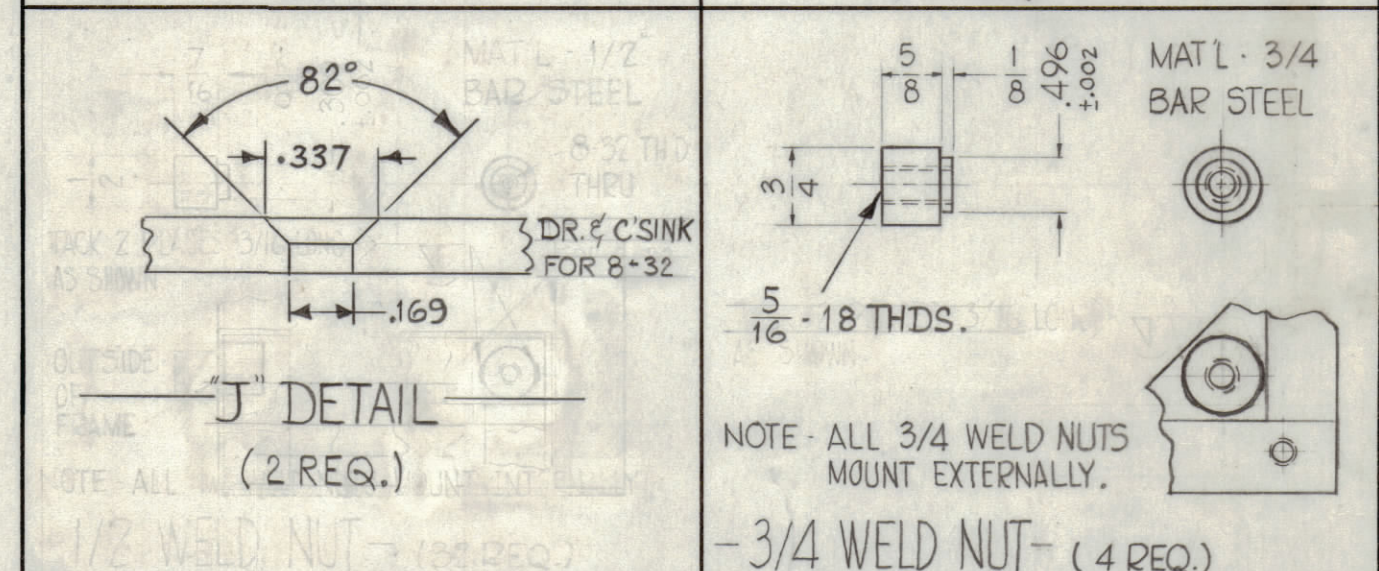
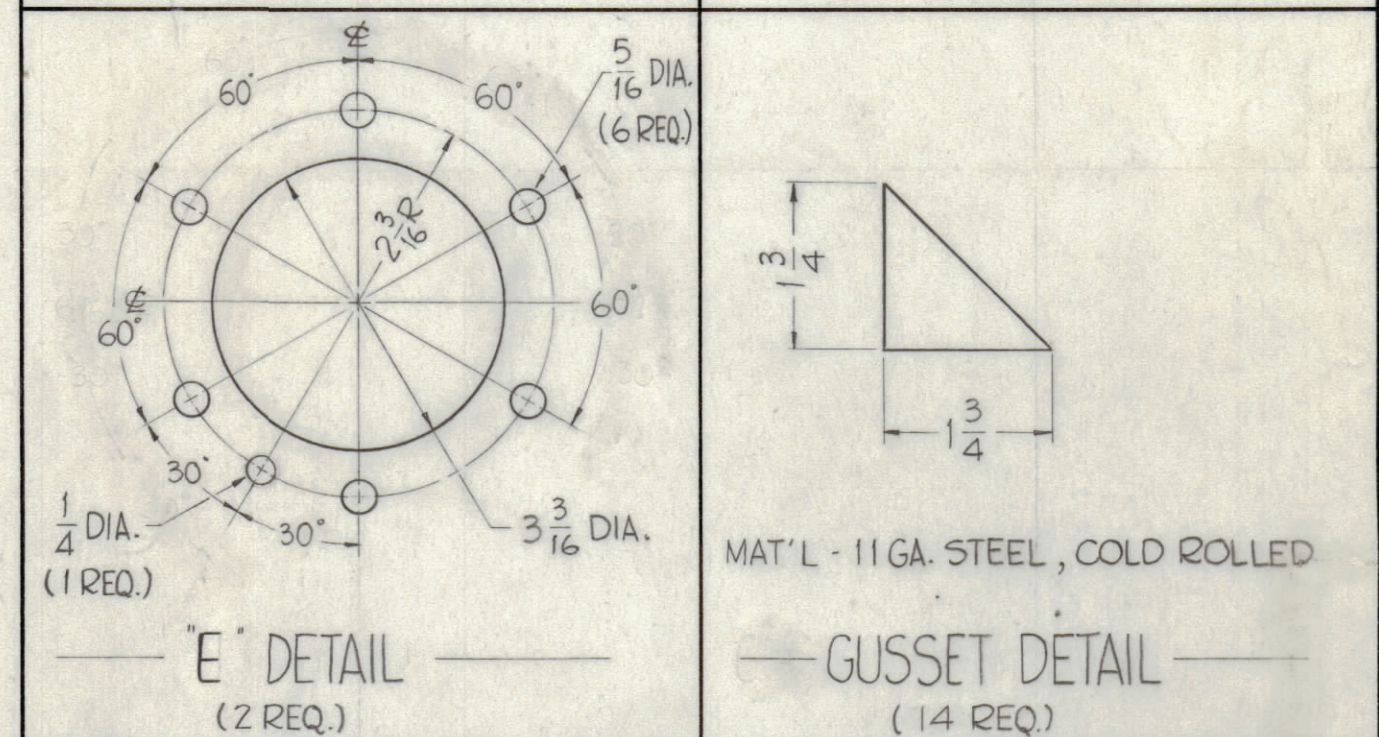
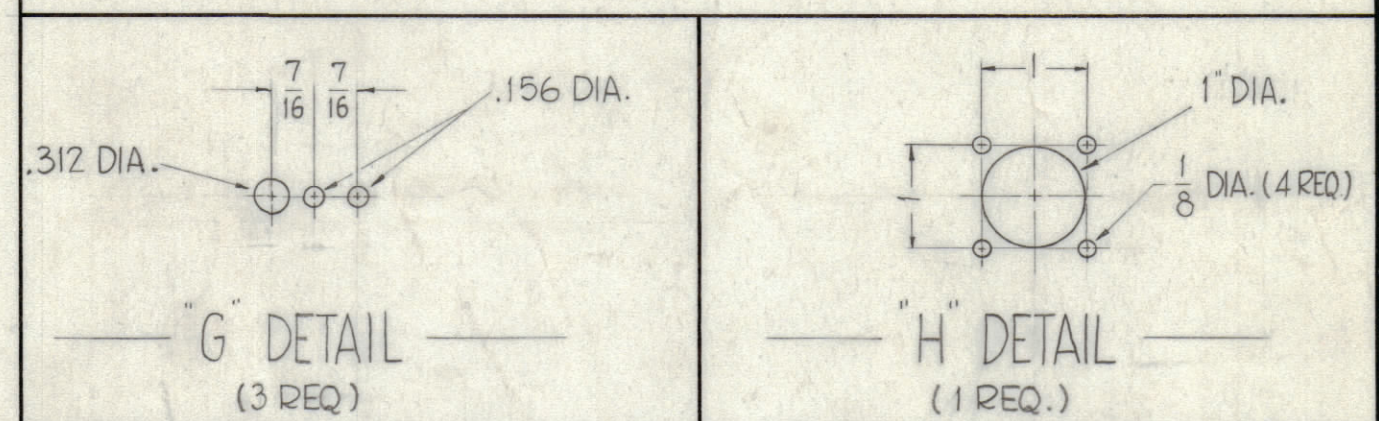
THE TECHNICAL MATERIEL CORPORATION claims proprietary right in the material disclosed herein. This drawing is issued in confidence for engineering information only and may not be reproduced or used to manufacture anything shown hereon without permission from THE TECHNICAL MATERIEL CORPORATION to the user. This drawing is loaned for mutual assistance and is subject to recall at any time.

Property of:  
THE TECHNICAL MATERIEL CORPORATION  
MAMARONECK, NEW YORK



**HOLES**

A - 3/16 DIA.	6 REQ.
B - DRILL AND TAP FOR 8-32	36 REQ.
C - 11/16 DIA.	1 REQ.
D - DRILL AND TAP FOR 10-32	10 REQ.
E - SEE DETAIL E MTG. 3/4 WELD NUT	2 REQ.
F - .500 DIA. FOR MTG. 3/4 WELD NUT	4 REQ.



**NOTES**

- 1 - FRAME - 3/4 X 3/4 x, 11 GA. COLD ROLLED STEEL.
- 2 - PLATE - 11 GA. COLD ROLLED STEEL.
- 3 - BOTTOM PLATE - 11 GA. COLD ROLLED STEEL.

**FINISH**

COPPER FLASH, AFTER WELDING AND GRINDING.

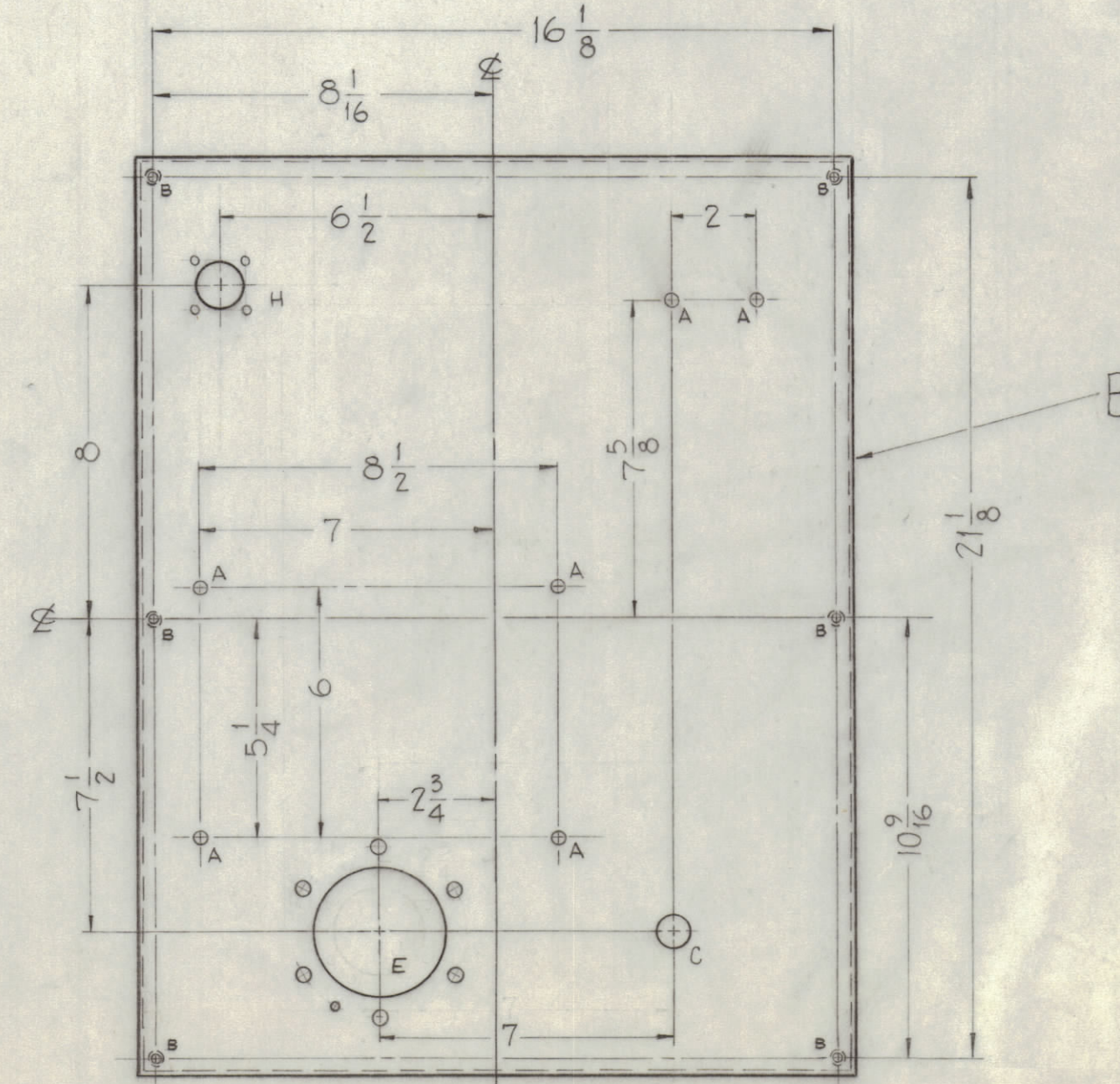
REF - TMC DWG NO. LD-904

SYM	ZONE	DESCRIPTION	DATE	CH. NO.	DRAFTS	CHECKER	ENG. APP.
B	D1	ADDED THIS NOTE TO WELD NUT DETAIL	5-9-61	4833	MMA	JCB	
B	D2	4-1/4 DIA HOLES ADDED WERE "A" HOLES					
B	D3	4-1/4 DIA WAS 4-7/16					
A		TWO "G" DETAILS ADDED	4/24/61				

UNLESS OTHERWISE SPECIFIED:  
DIMENSIONS ARE IN INCHES  
TOLERANCES ON  
FRACTIONS ± 1/64 DECIMALS ± .005 ANGLES ± 1/2°

SCALE - DO NOT SCALE

MAXIMUM ALLOWABLE TOLERANCES HAVE BEEN DETERMINED AND ANY DEVIATIONS WILL BE CAUSE FOR REJECTION. REMOVE ALL BURRS & SHARP EDGES



UNLESS OTHERWISE SPECIFIED DIMENSIONS ARE IN INCHES AND INCLUDE CHEMICALLY APPLIED OR PLATED FINISHES

DECIMALS	FRACTIONS
± .05	± 1/64
± .01	ANGLES
± .005	± 30°

TOLERANCES

REQ. PER UNIT	MODEL	SECTION	ASS'Y. NO.	DATE	TYPE & TEMPER	HEAT TREAT. SPEC.	FINISH & SPEC. NO.
1	ACU			4-17-61			

REQ. ITEM	PART NO.	DESCRIPTION	SYMBOL
		THE TECHNICAL MATERIEL CORP. MAMARONECK, NEW YORK	
		FRAME ASSY	
		MATERIAL	
		John C. Biele	
		DRAWN	
		CHECKED	
		FINAL APPROVAL	
		00	
		MS-2426	
		B	