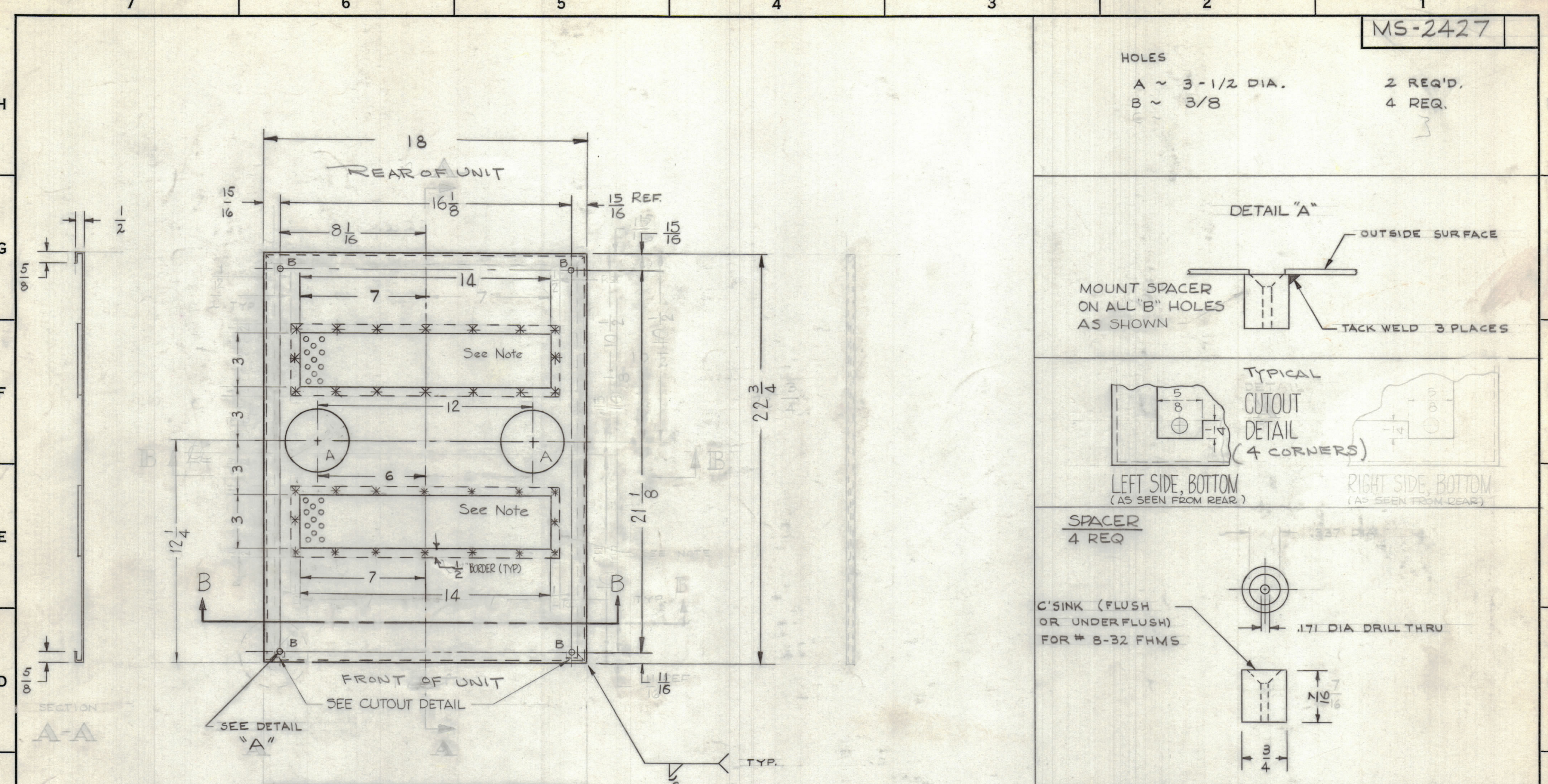


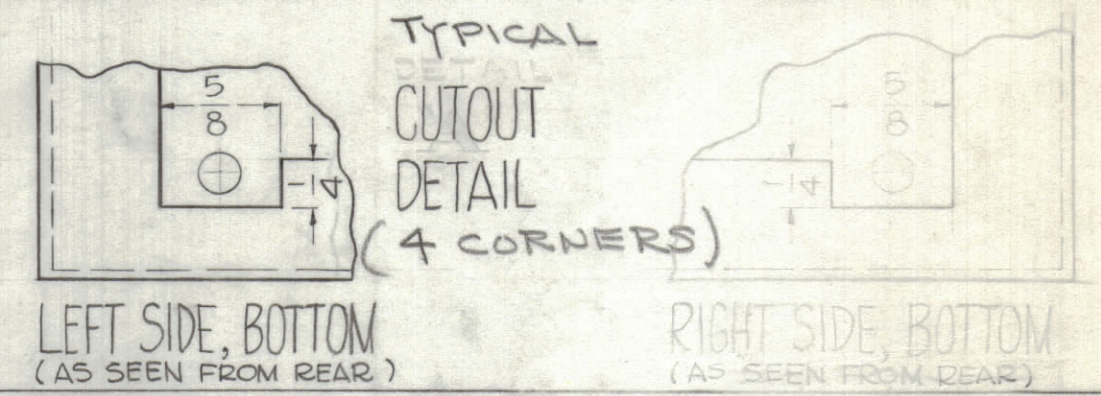
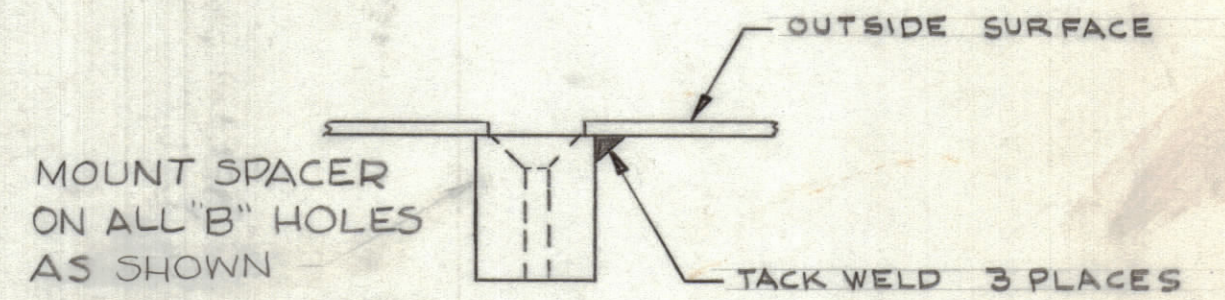
HOLES

A ~ 3-1/2 DIA.
B ~ 3/8

2 REQ'D,
4 REQ.

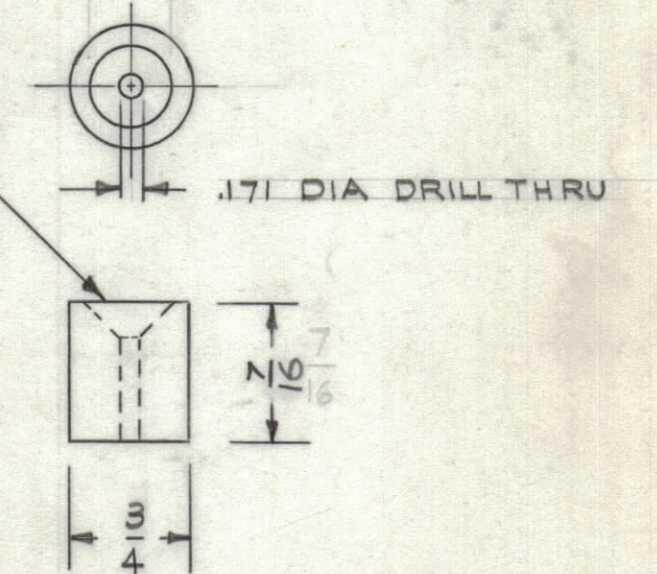


DETAIL "A"



SPACER
4 REQ

C'SINK (FLUSH OR UNDERFLUSH) FOR # 8-32 FHMS



FINISH NOTES (ALL SURFACES)

FINISH NOTE: ALL SURFACES
 S-404 YELLOW IRIDITE
 S-114 ZINC CHROMATE PRIMER
 S-220 RCAF BLUE GREY ENAMEL (OR PRIME & PAINT TO CUST. SPEC.)
 (OR PRIME & PAINT TO CUST. SPEC.)

WELD ALL CORNERS & GRIND SMOOTH
 USE MATERIAL THICKNESS FOR MAX. RADIUS ON ALL BENDS UNLESS OTHERWISE SPECIFIED

UNLESS OTHERWISE SPECIFIED DIMENSIONS ARE IN INCHES AND INCLUDE CHEMICALLY APPLIED OR PLATED FINISHES

DECIMALS	FRACTIONS
.X ± .05	± 1/64
.XX ± .01	ANGLES ± 0° 30'
.XXX ± .005	

TOLERANCES

SYM	ZONE	DESCRIPTION	DATE	CH. NO.	DRAFTS	CHECKER	ENG. APP.
UNLESS OTHERWISE SPECIFIED: DIMENSIONS ARE IN INCHES							
TOLERANCES ON FRACTIONS ± 1/64 DECIMALS ± .005 ANGLES ± 1/2°							
MAXIMUM ALLOWABLE TOLERANCES HAVE BEEN DETERMINED AND ANY DEVIATIONS WILL BE CAUSE FOR REJECTION. REMOVE ALL BURRS & SHARP EDGES							

REQ. PER UNIT	MODEL	SECTION	ASS'Y. NO.	DATE
1	ACU			4-13-61

REQ. ITEM	PART NO.	DESCRIPTION	SYMBOL
	16 GA	THE TECHNICAL MATERIEL CORP.	
	STOCK SIZE	MAMARONECK, NEW YORK	
	COLD ROLL STEEL	TOP PANEL	
	MATERIAL		
	COLD ROLL		
	TYPE & TEMPER	HEAT TREAT. SPEC.	
	SEE FINISH NOTE		
	FINISH & SPEC. NO.	ELEC. DES. APP.	MECH. DES. APP.
		SHEET	OF
		MS-2427	