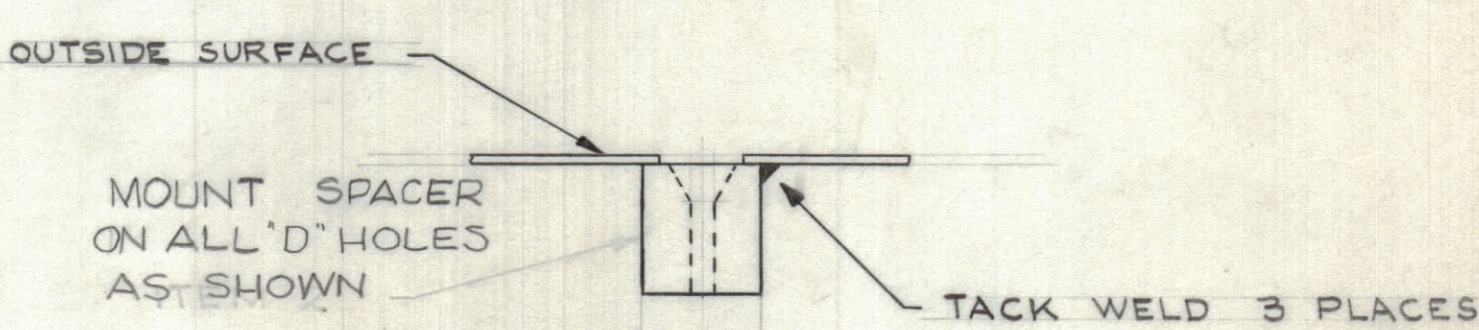
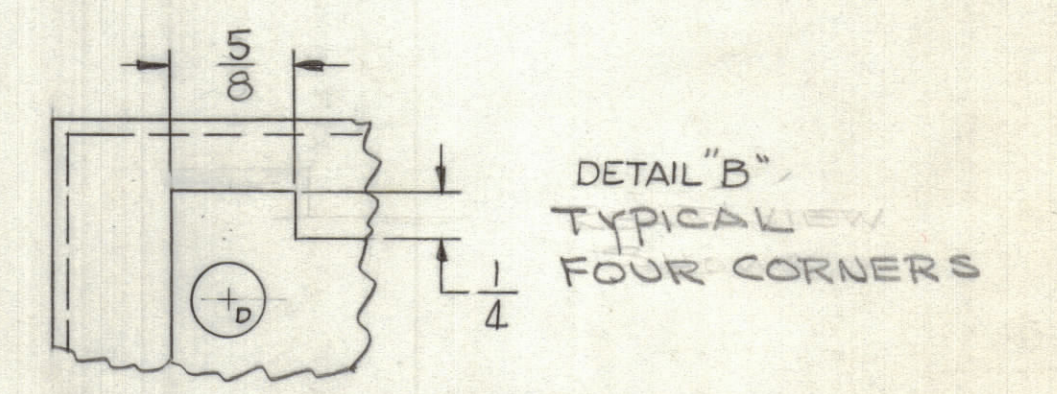
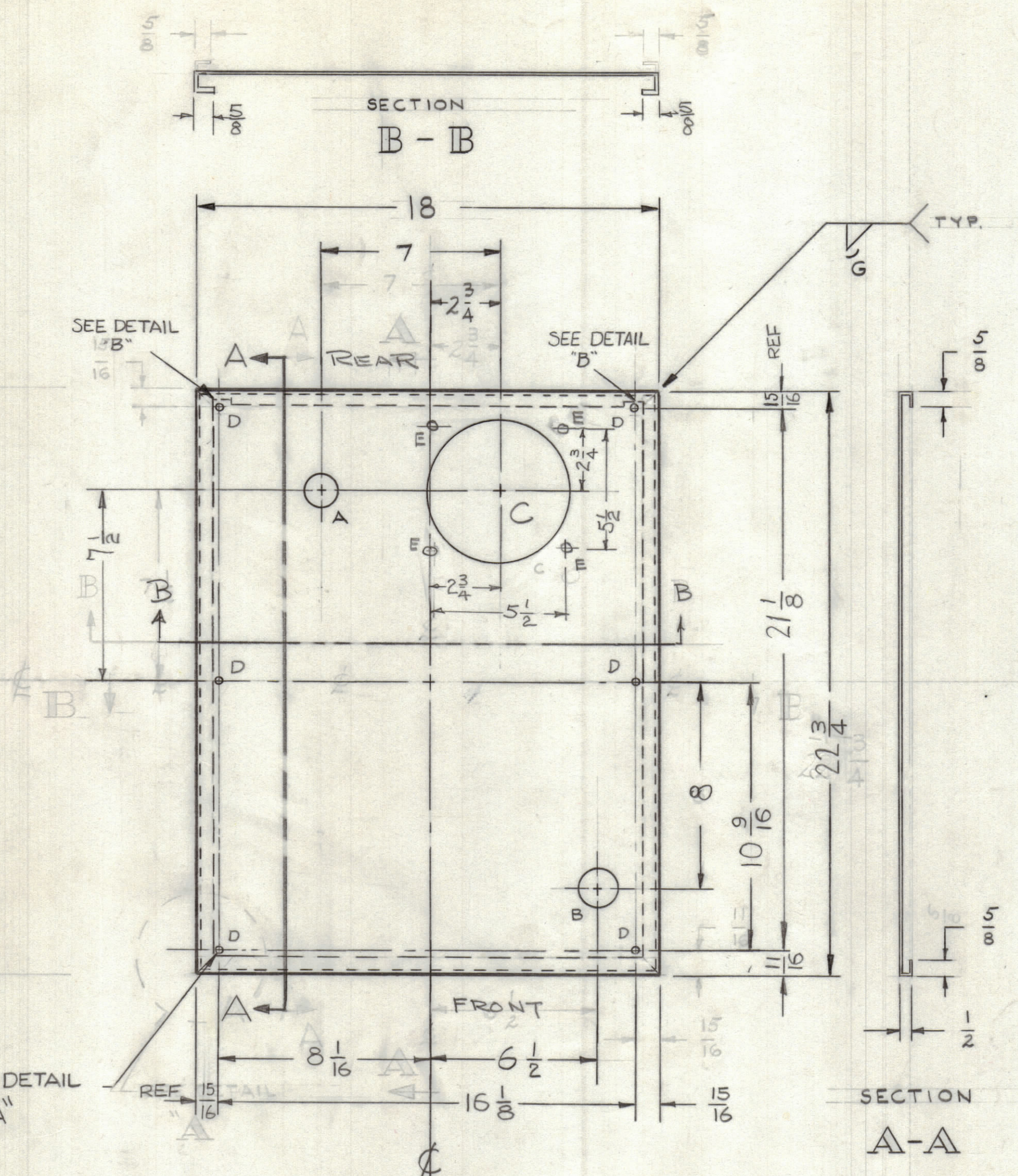


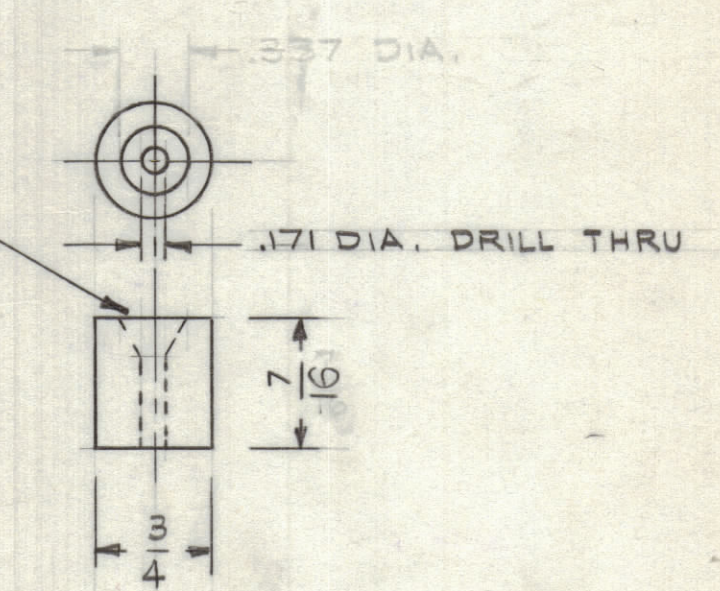
HOLES	REQ'D.
A ~ 1-1/4 DIA.	1
B ~ 1-1/2 DIA.	1
C ~ 5-1/2 DIA.	1
D ~ 3/8 DIA	6
E - $\frac{11}{64}$ D	4



SPACER  
6 REQ.

DETAIL  
"A"

6 REQ'D.



NOTE: WELD ALL CORNERS & GRIND SMOOTH

USE MATERIAL THICKNESS FOR MAX RADIUS ON ALL BENDS UNLESS OTHERWISE SPECIFIED

FINISH NOTE: ALL SURFACES  
 S-404 YELLOW IRIDITE  
 S-114 ZINC CHROMATE PRIMER  
 S-220 RCAF BLUE GREY ENAMEL  
 (OR. PRIME & PAINT TO CUST SPEC.)

UNLESS OTHERWISE SPECIFIED DIMENSIONS ARE IN INCHES AND INCLUDE CHEMICALLY APPLIED OR PLATED FINISHES	
DECIMALS X ± .05 XX ± .01 XXX ± .005	FRACTIONS ± 1/64 ANGLES ± 0° 30'
TOLERANCES	

SYM	ZONE	DESCRIPTION	DATE	CH. NO.	DRAFTS	CHECKER	ENG. APP.
UNLESS OTHERWISE SPECIFIED: DIMENSIONS ARE IN INCHES TOLERANCES ON FRACTIONS ± 1/64    DECIMALS ± .005    ANGLES ± 1/2°							
SCALE 1/4" = 1" DO NOT SCALE			MAXIMUM ALLOWABLE TOLERANCES HAVE BEEN DETERMINED AND ANY DEVIATIONS WILL BE CAUSE FOR REJECTION. REMOVE ALL BURRS & SHARP EDGES				

REQ. PER UNIT	MODEL	SECTION	ASSY. NO.	DATE
1	ACU			4-12-61

REQ. ITEM	PART NO.	DESCRIPTION	SYMBOL
	16 GA	THE TECHNICAL MATERIEL CORP. MAMARONECK, NEW YORK	
	COLD ROLL STEEL	BOTTOM PANEL	
	COLD ROLL		
	TYPE & TEMPER	HEAT TREAT. SPEC.	
	FINISH & SPEC. NO.	ELEC. DES. APP.	MECH. DES. APP.
		SHEET	OF