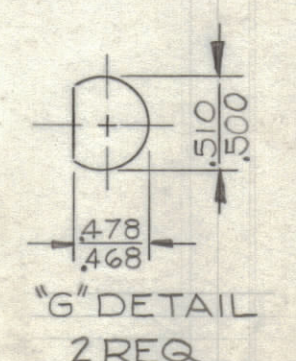
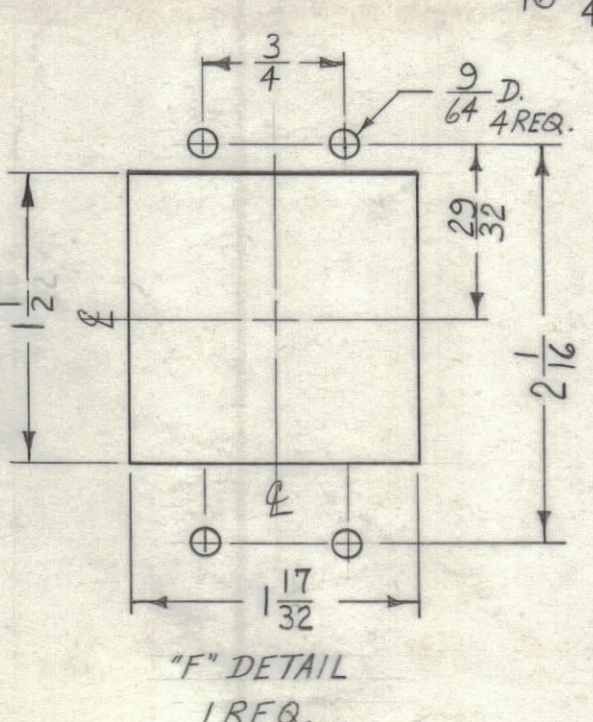
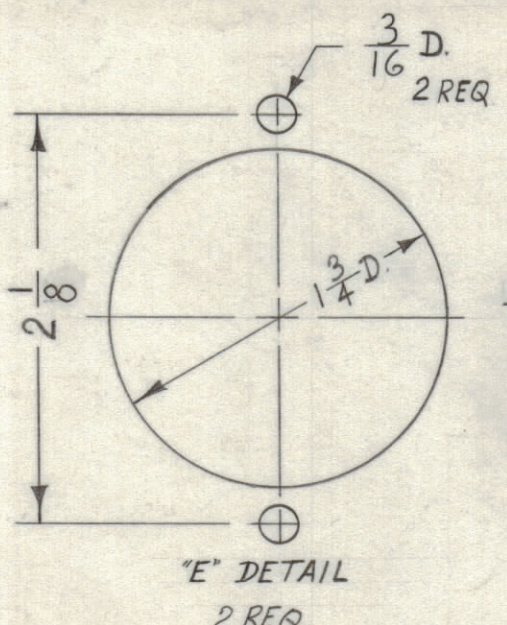
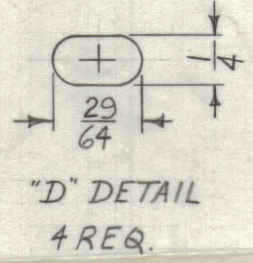


METAL STAMP TMC PART NO.  $\frac{1}{8}$ " HIGH GOTHIC ON REAR OF PANEL

- A -  $\frac{5}{64}$  DIA. 4 REQ.
- B -  $\frac{3}{16}$  DIA. 4 REQ.
- C - 1" DIA. 1 REQ.



**MACHINING~**  
 1.- LATERAL BOW OF PANEL MUST BE KEPT TO .031 TOLERANCE.  
 2.- MILL ALL EDGES.  
 3.- HOLES MUST BE DRILLED.  
 4.- PANEL MUST BE FREE OF ALL MACHINING MARKS GOUGES & SCRATCHES.  
 IF NECESSARY SAND FRONT OF PANEL WITH NO. 120 GRIT SANDPAPER.

**FINISH~**  
 3404 YELLOW IRIDITE.  
 S114 ZINC CHROMATE PRIMER } FRONT &  
 S115 TMC SMOOTH GREY ENAMEL } EDGES ONLY.

**NOTICE TO PERSONS RECEIVING THIS DRAWING**  
 THE TECHNICAL MATERIEL CORPORATION claims proprietary right in the material disclosed hereon. This drawing is issued in confidence for engineering information only and may not be reproduced or used to manufacture anything shown hereon without permission from THE TECHNICAL MATERIEL CORPORATION to the user. This drawing is loaned for mutual assistance and is subject to recall at any time.  
 Property of:  
 THE TECHNICAL MATERIEL CORPORATION  
 MAMARONECK, NEW YORK

UNLESS OTHERWISE SPECIFIED DIMENSIONS ARE IN INCHES AND INCLUDE CHEMICALLY APPLIED OR PLATED FINISHES

DECIMALS	FRACTIONS
X ± .05	± 1/64
.XX ± .01	ANGLES ± 0° 30'
.XXX ± .005	

TOLERANCES

SYM	ZONE	DESCRIPTION	DATE	CH. NO.	DRAFTS	CHECKER	ENG. APP.
B	C5	1-17/32 DIM. WAS 1-1/2 ON "F" DETAIL	10-31-61	5768	JLh	PK	PK
A	F&EG	⊙ G Holes Added	12/1/60	3622	RW.	PK	PK
	E&G	⊙ "E" Details & ⊙ "E" Hole Relocated					

UNLESS OTHERWISE SPECIFIED:  
 DIMENSIONS ARE IN INCHES  
 TOLERANCES ON  
 FRACTIONS ± 1/64    DECIMALS ± .005    ANGLES ± 1/2°

MAXIMUM ALLOWABLE TOLERANCES HAVE BEEN DETERMINED AND ANY DEVIATIONS WILL BE CAUSE FOR REJECTION. REMOVE ALL BURRS & SHARP EDGES

REQ. PER UNIT	MODEL	SECTION	ASS'Y. NO.	DATE
1	APP-5			8-3-61
1	APP-4			11-3-60

REF: LD-840(4)

REQ. ITEM	PART NO.	DESCRIPTION	SYMBOL
	3/16	THE TECHNICAL MATERIEL CORP. MAMARONECK, NEW YORK	
	ALUMINUM	MACHINING, FRONT PANEL	
	2024-T3		
	SEE NOTE		

TYPE & TEMPER	HEAT TREAT. SPEC.	ELEC. DES. APP.	MECH. DES. APP.	SHEET OF
		W.F.	H.D.	MS-2471 B