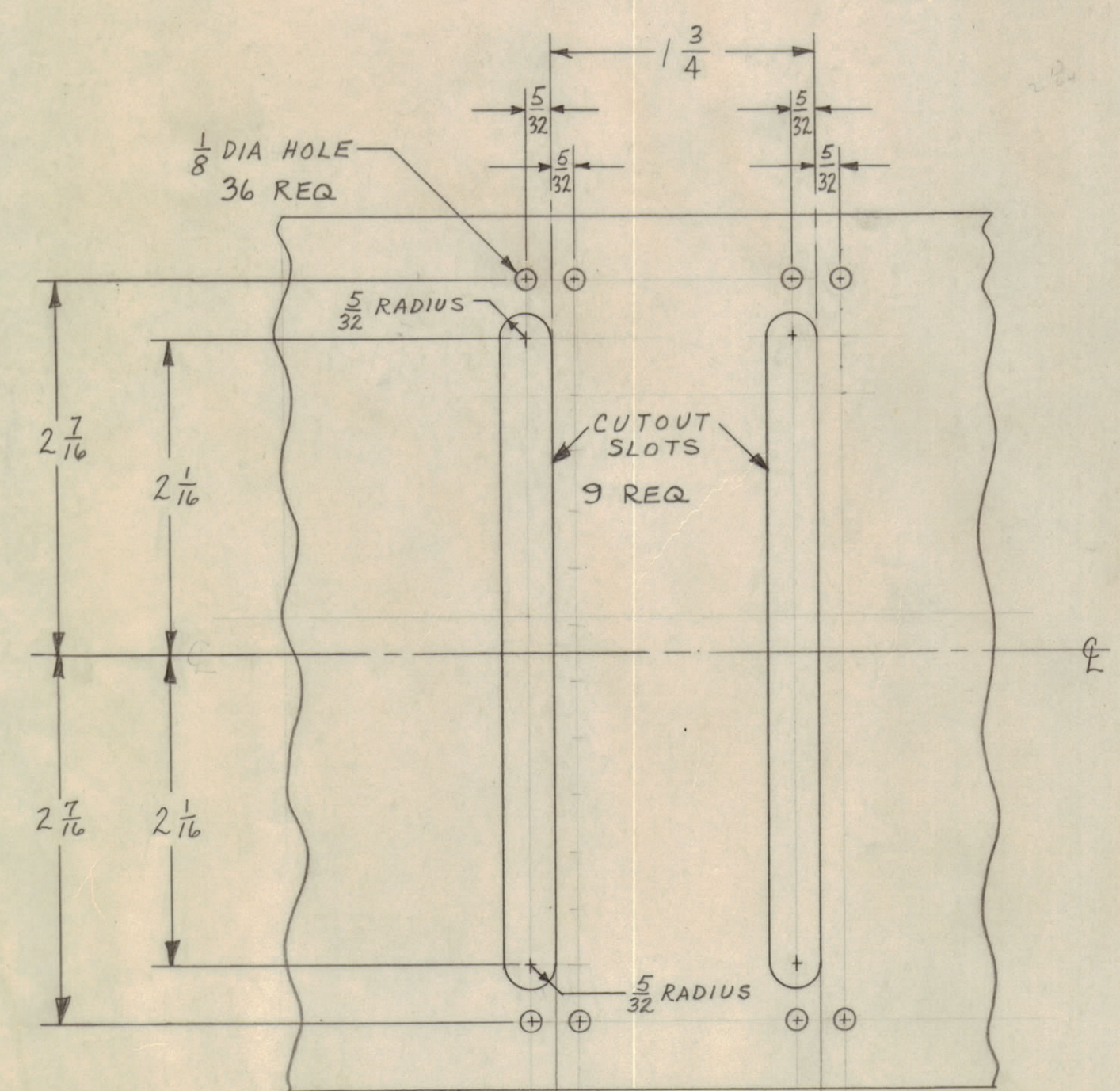
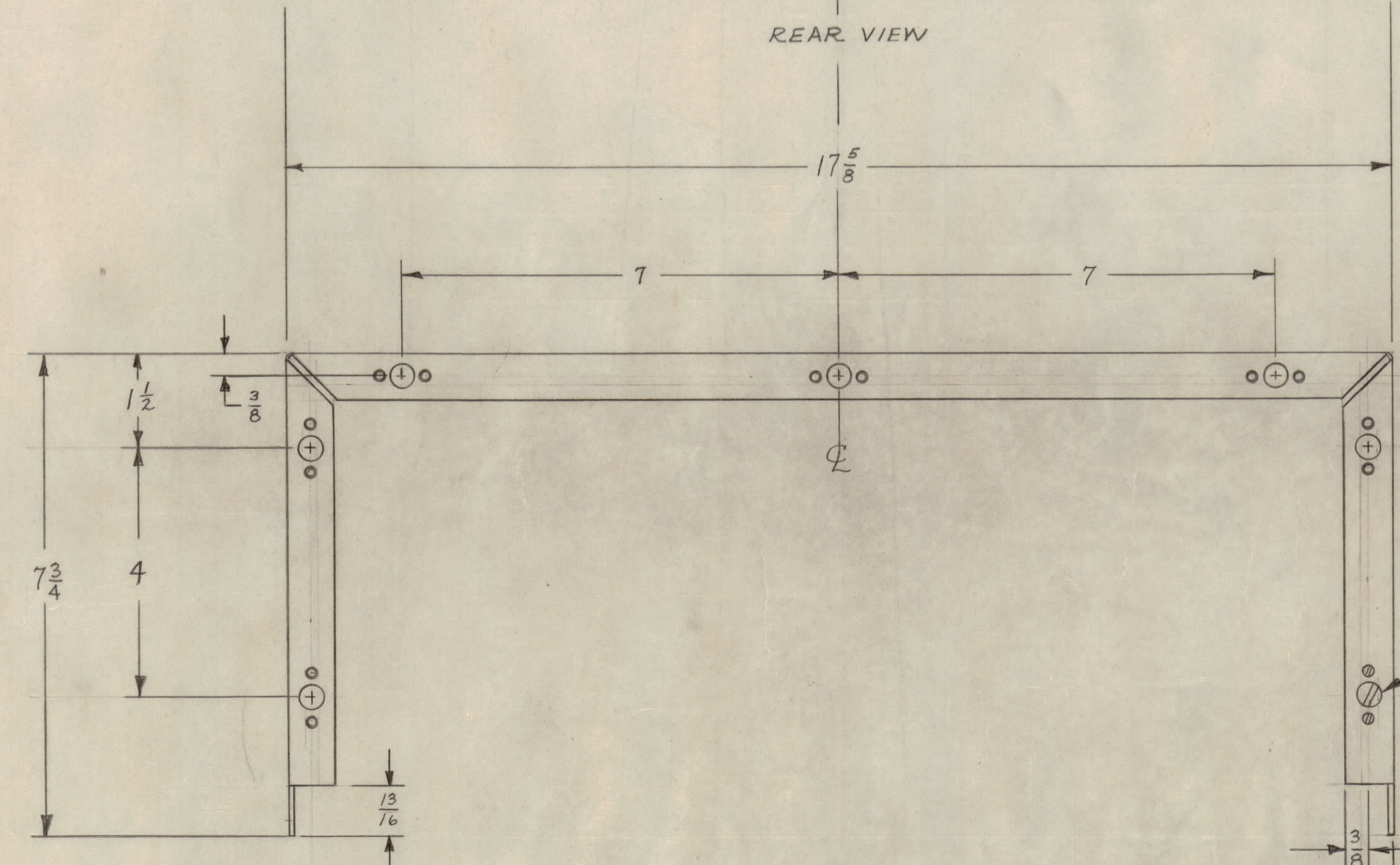
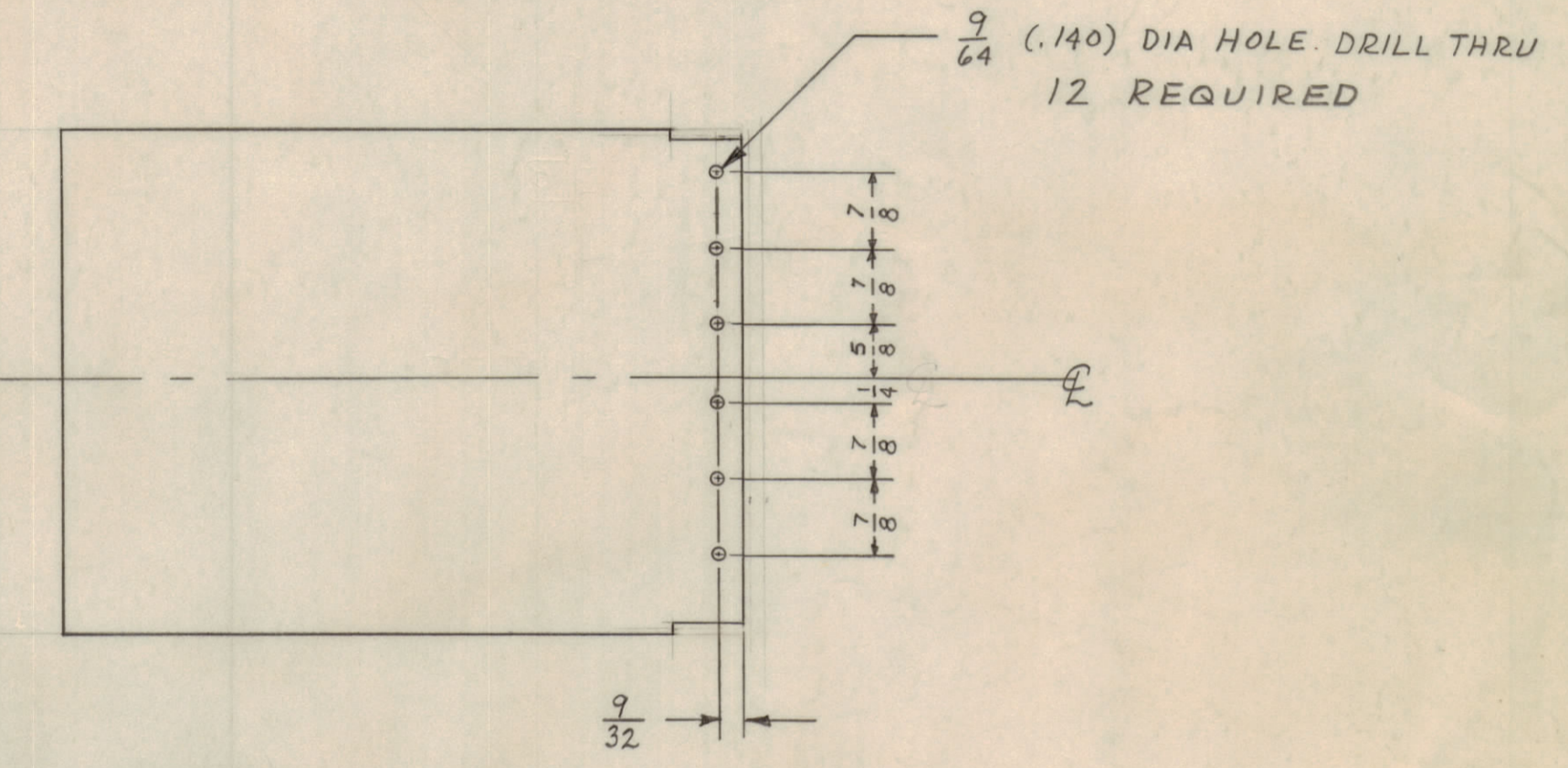
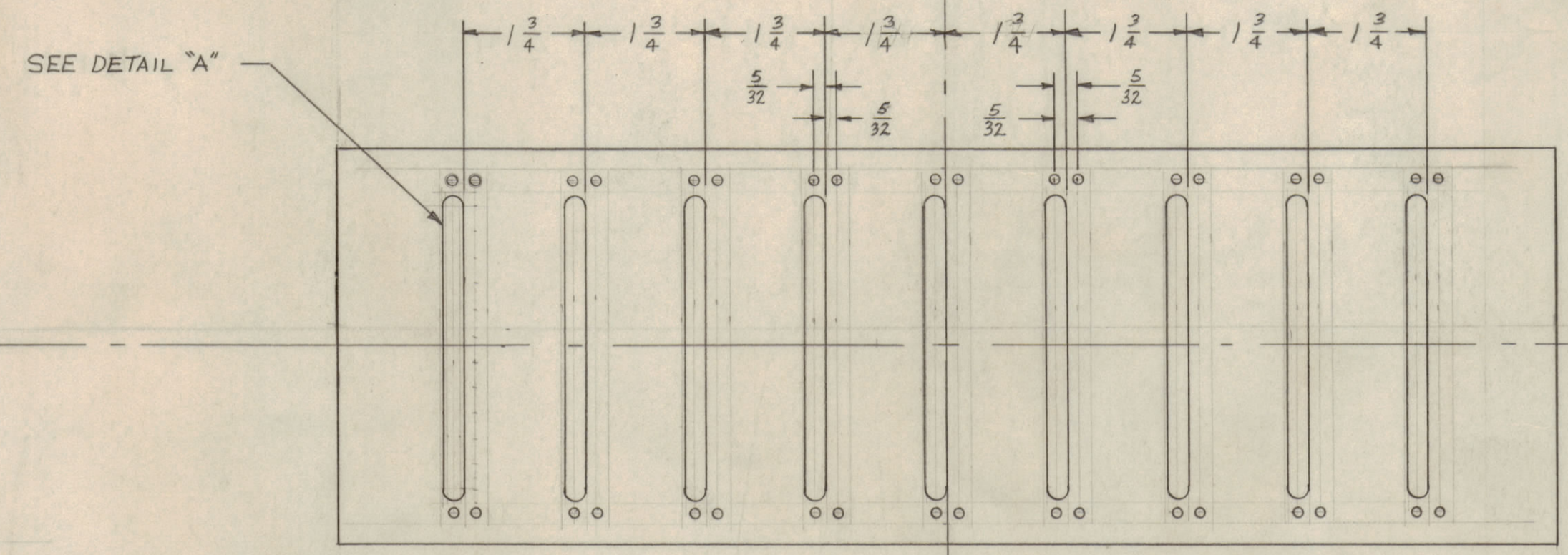
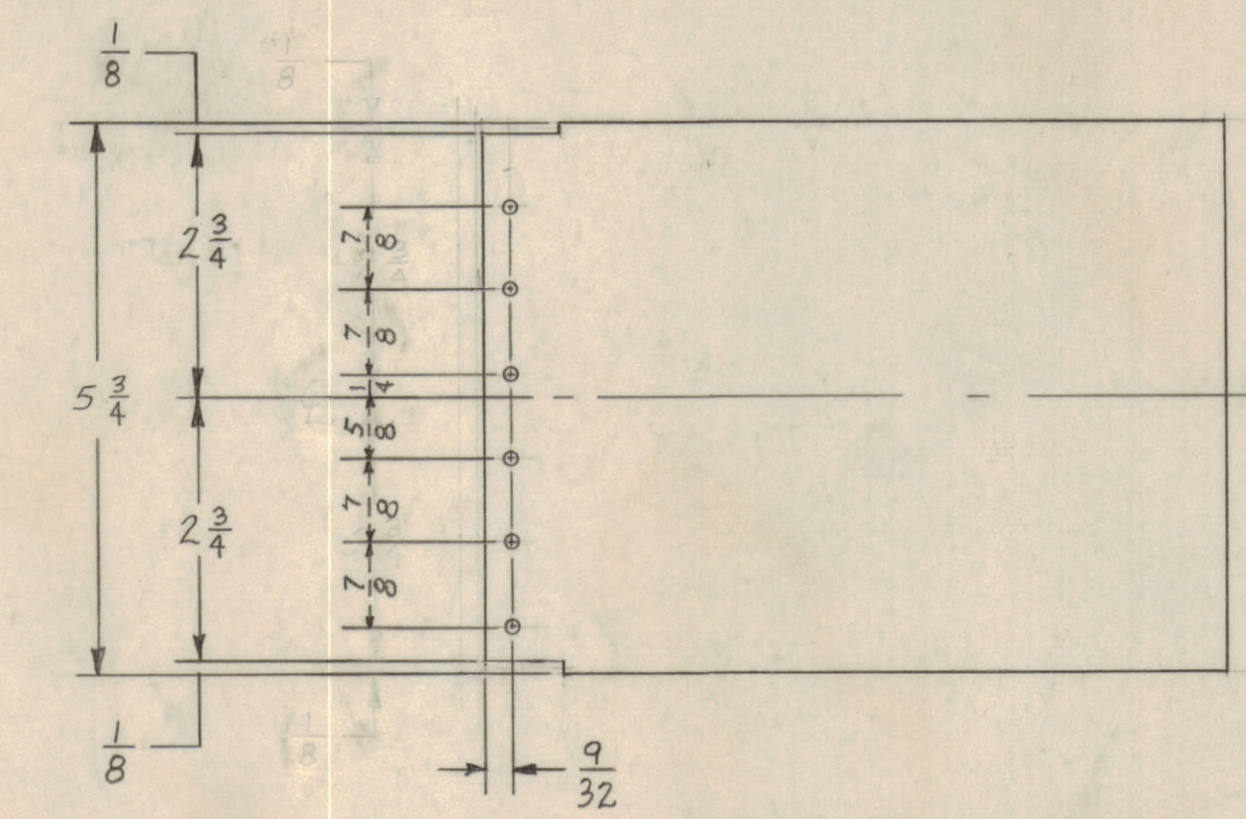
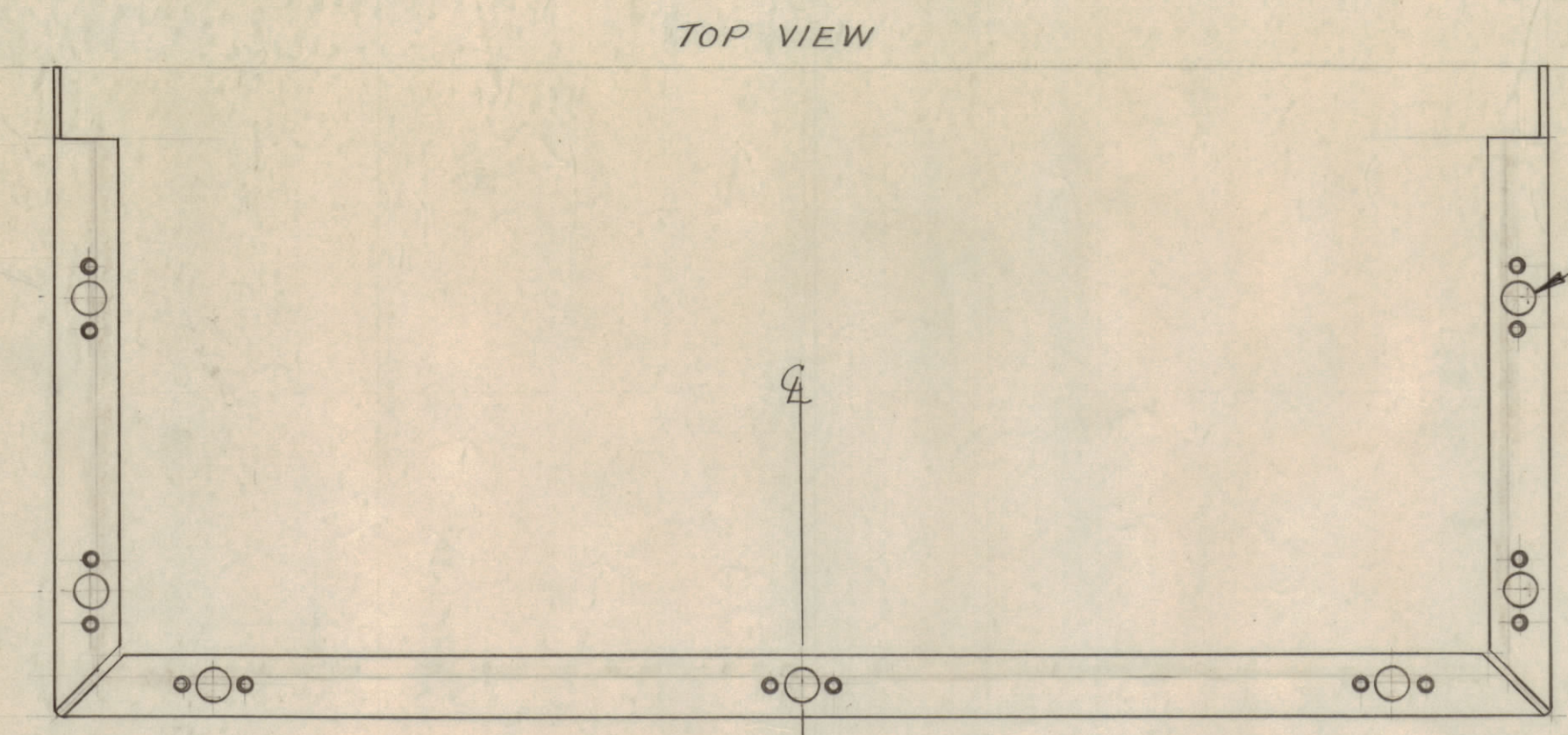
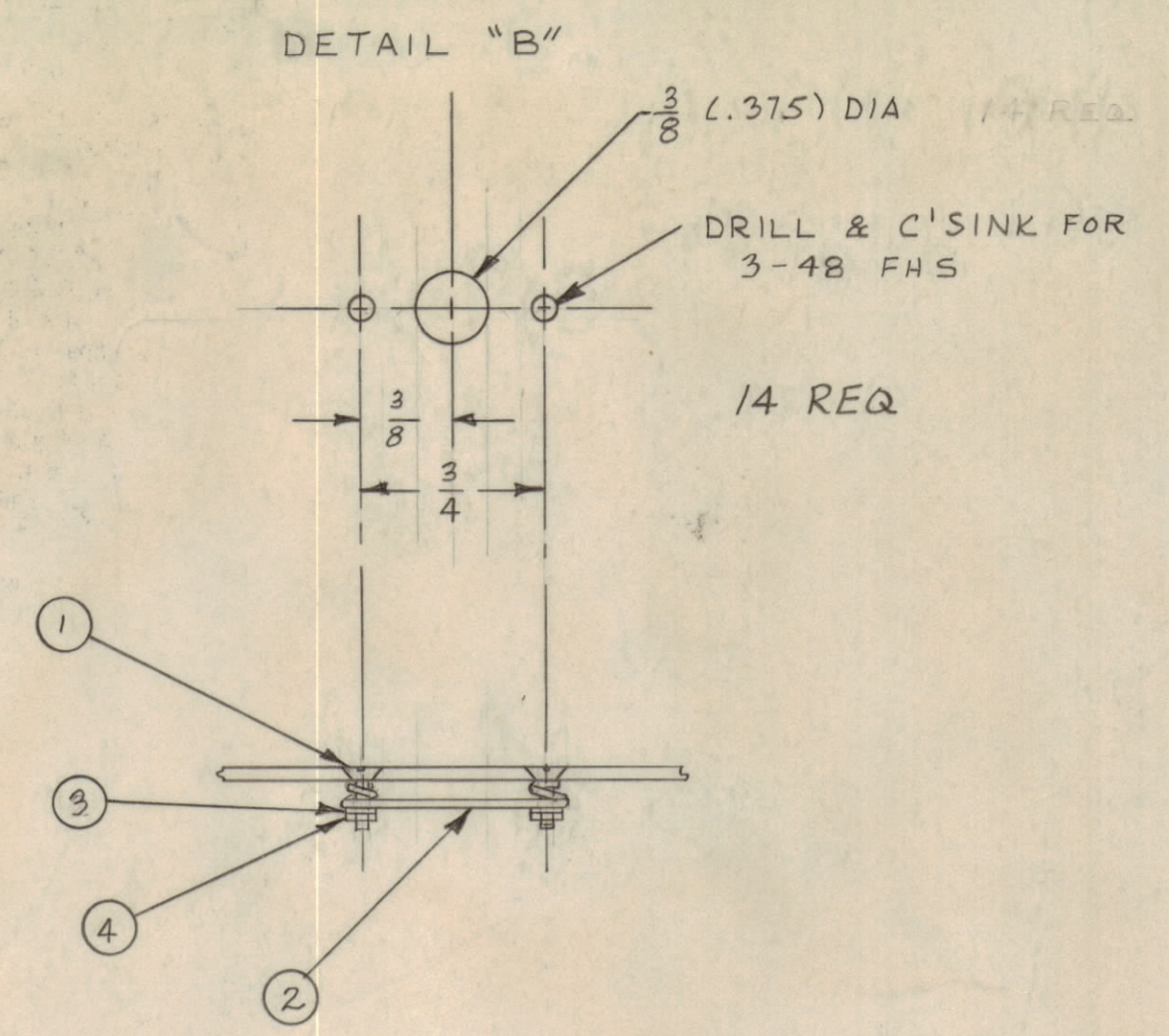


NOTICE TO PERSONS RECEIVING THIS DRAWING  
 THE TECHNICAL MATERIEL CORPORATION claims  
 proprietary right in the material disclosed herein.  
 This drawing is issued in confidence for engineering  
 information only and may not be reproduced or used  
 to manufacture anything shown herein without per-  
 mission from THE TECHNICAL MATERIEL CORPORA-  
 TION to the user. This drawing is loaned for mutual  
 assistance and is subject to recall at any time.  
 Property of:  
 THE TECHNICAL MATERIEL CORPORATION  
 MAMARONECK, NEW YORK



UNLESS OTHERWISE SPECIFIED  
 DIMENSIONS ARE IN INCHES AND INCLUDE  
 CHEMICALLY APPLIED OR PLATED FINISHES  
 DECIMALS FRACTIONS  
 .XX ± .01 .XX ± .01  
 .XXX ± .005 .XXX ± .005  
 TOLERANCES ANGLES  
 ± 0° 30'

DWG. WAS SY-1024-4

28	4	8TH0348BC6	NUT, HEX	
28	3	LWE 03MRC	WASHER LOCK	
14	2	FS-102-1	FASTNER, SPRING (DZUS)	
28	1	SCFS0348BN4	SCREW, MACHINE FLAT HEAD	
REQ. ITEM	PART NO.	DESCRIPTION		SYMBOL
1/16"		THE TECHNICAL MATERIEL CORP. MAMARONECK, NEW YORK SYSTEMS DEPARTMENT		
STOCK SIZE		SALES ORDER NUMBER	PROPOSAL NUMBER	QR NUMBER
ALUMINUM		TITLE: WRAPAROUND FOR CPP-4		
MATERIAL				
TYPE & TEMPER HEAT TREAT SPEC:				
S404		MJT	6-28-60	MS-2503
FINISH & SPEC. NO.		DRAWN BY DATE		FINAL APPROVAL

MS-2503