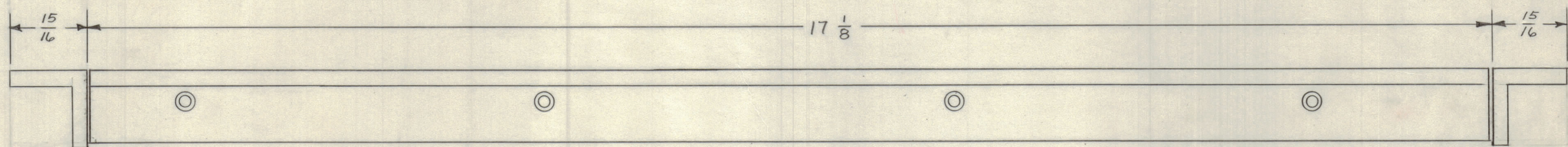
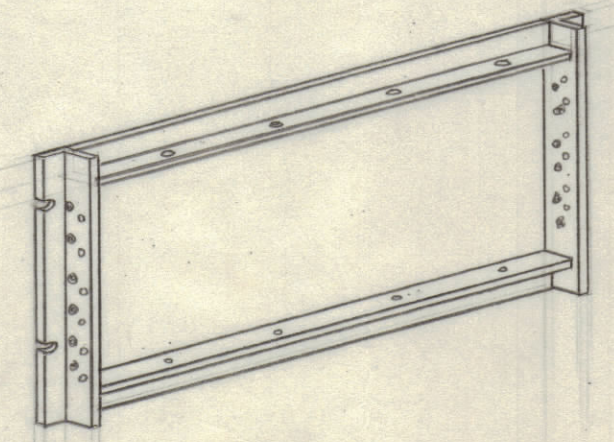


MS-2506



NOTE
SEAM WELD AS INDICATED

FINISH NOTE:
 S404 YELLOW IRIDITE
 S114 ZINC CHROMATE PRIMER } FRONT AND EDGES ONLY
 S115 SMOOTH GREY ENAMEL }



DWG WAS SY-1024-8

UNLESS OTHERWISE SPECIFIED DIMENSIONS ARE IN INCHES AND INCLUDE CHEMICALLY APPLIED OR PLATED FINISHES	
DECIMALS	FRACTIONS
.X ± .05	± 1/64
.XX ± .01	ANGLES
.XXX ± .005	± 0° 30'
TOLERANCES	
CUT HERE GUARANTEED 2.00	

THE TECHNICAL MATERIEL CORP. MAMARONECK, NEW YORK SYSTEMS DEPARTMENT			
STOCK SIZE	SALES ORDER NUMBER	PROPOSAL NUMBER	QR NUMBER
ALUMINUM			
MATERIAL	TITLE: FRONT PANEL CPP-4 SERIES		
2024-T3			
TYPE & TEMPER HEAT TREAT. SPEC.			
SEE NOTE	MJT	7-28-60	MS-2506
FINISH & SPEC NO.	DRAWN BY	DATE	FINAL APPROVAL