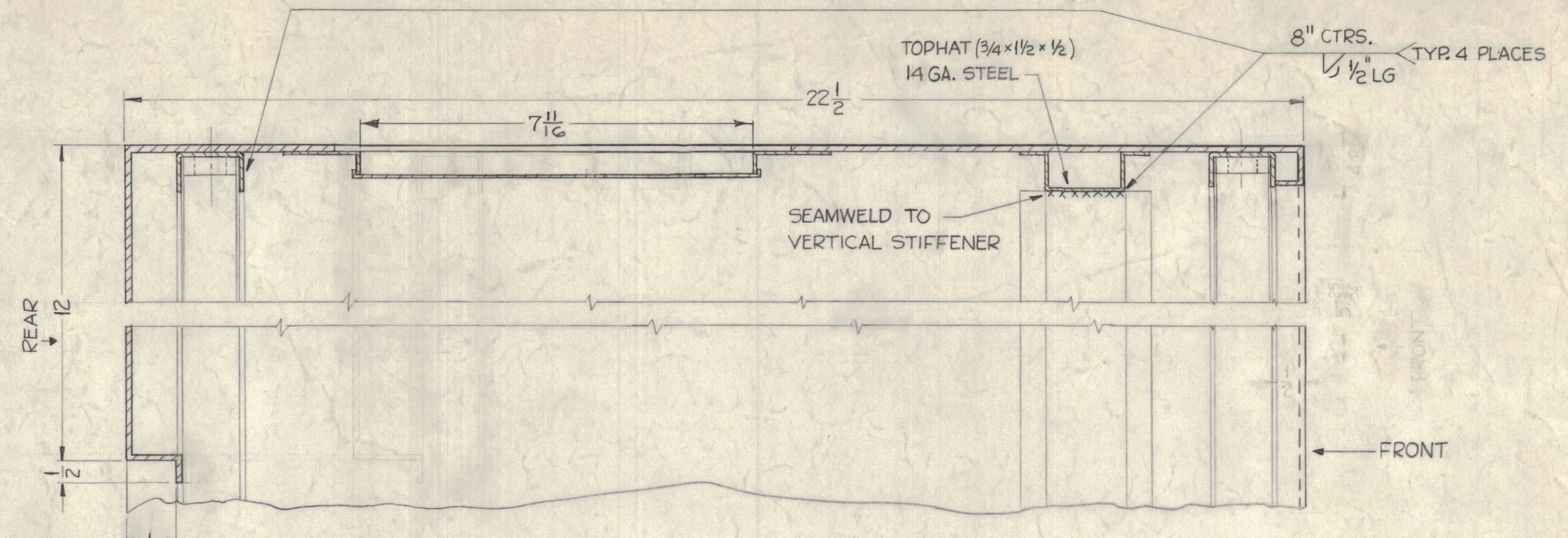
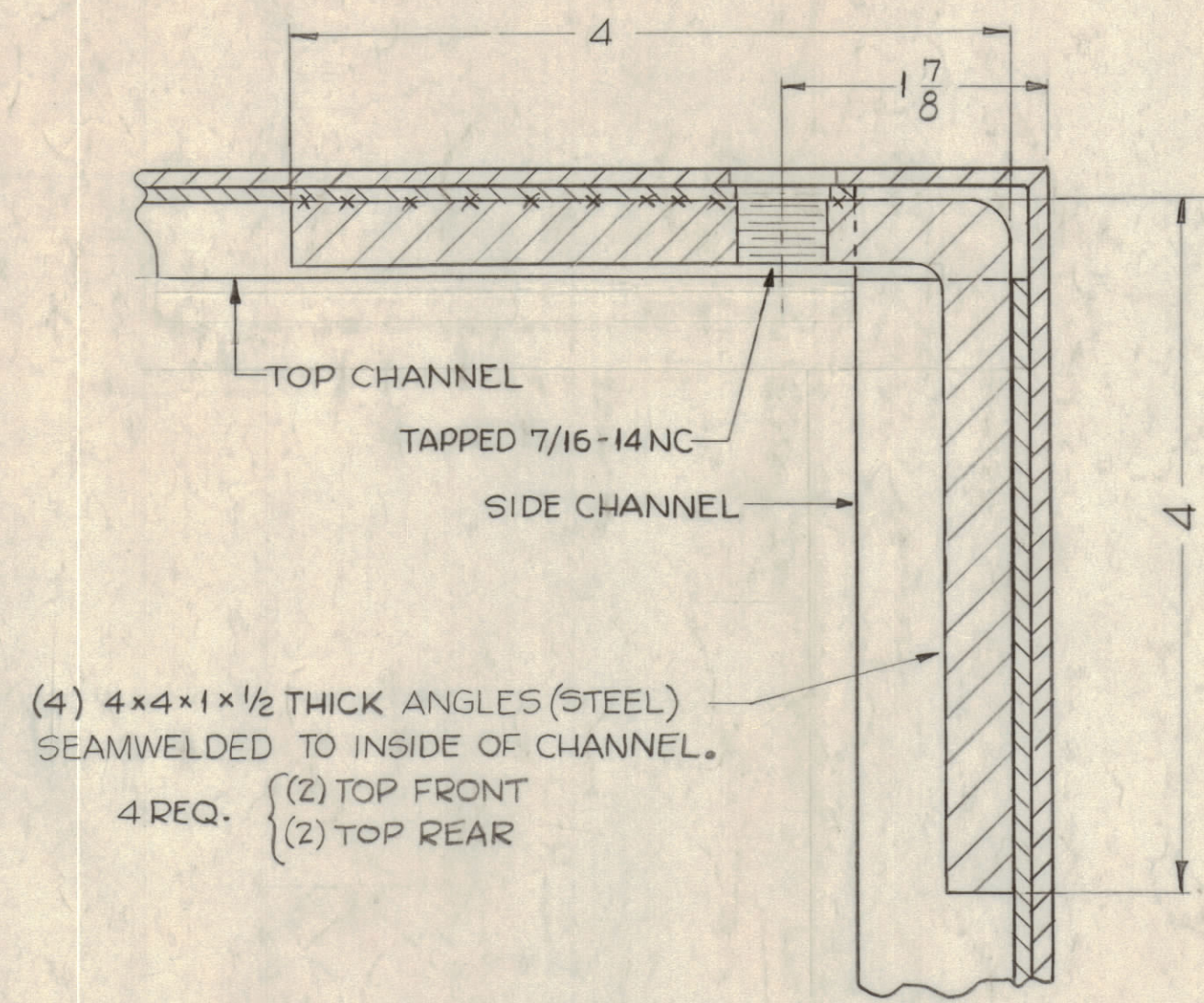


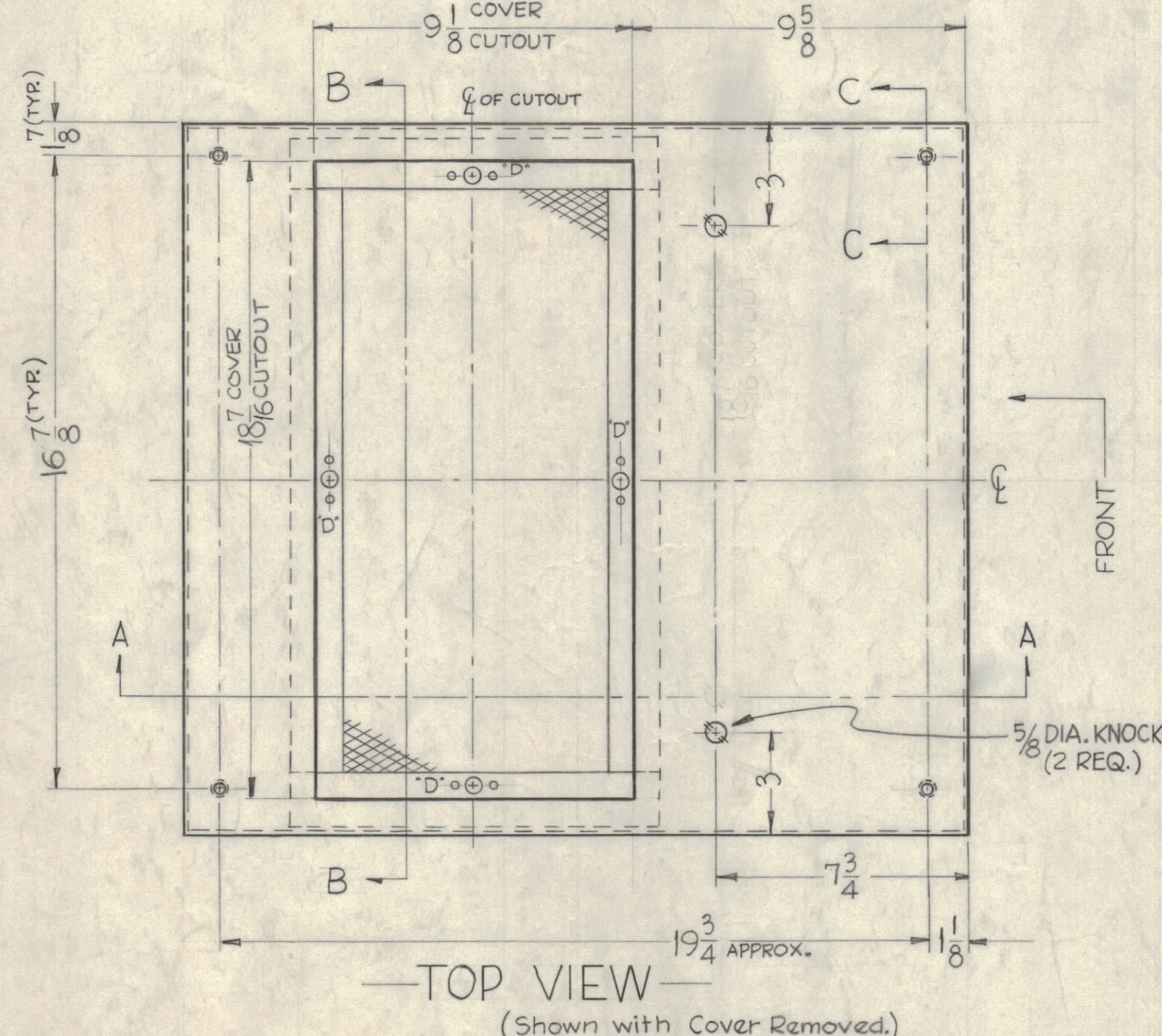
SECTION B-B



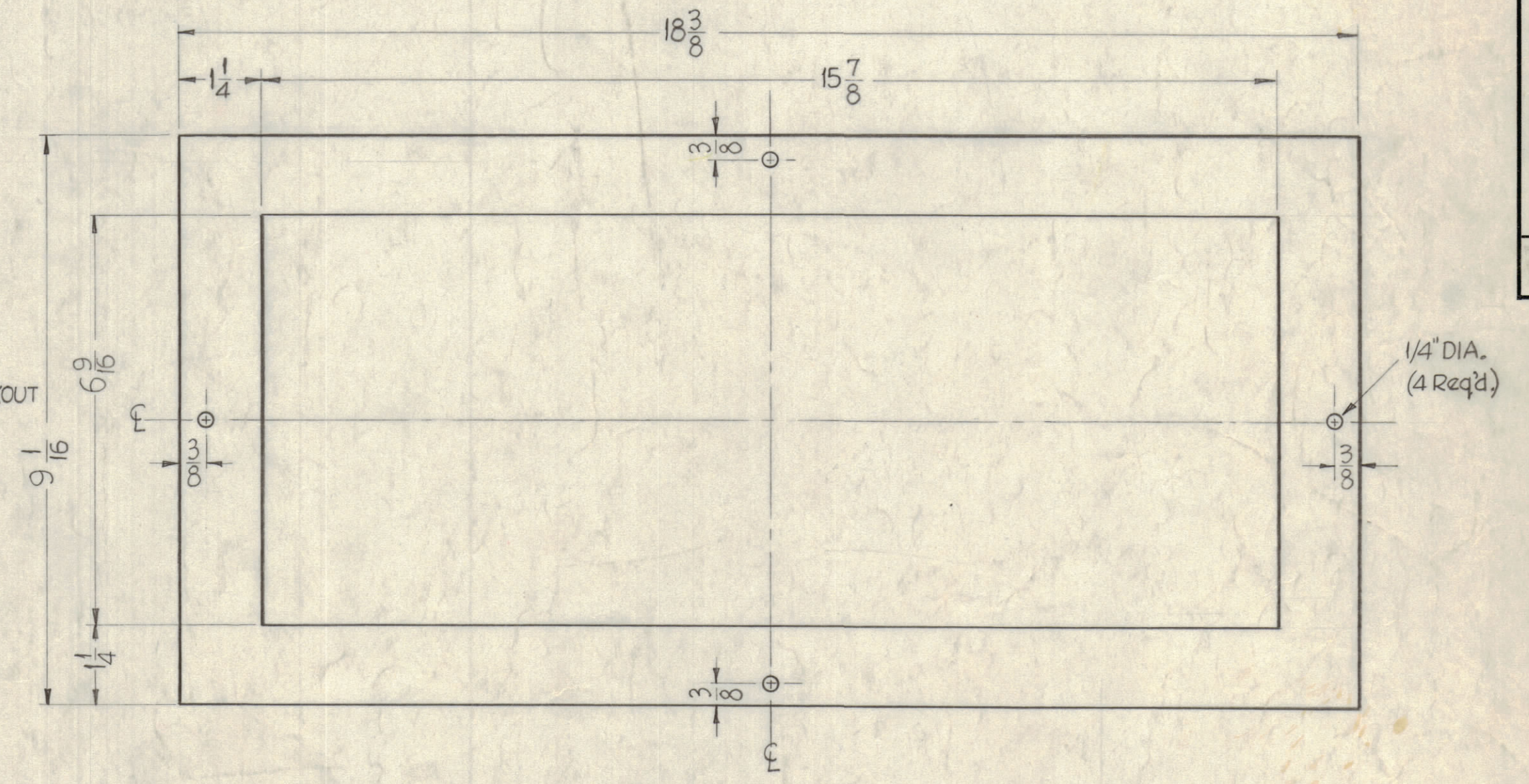
SECTION A-A



SECTION C-C (TYR)
(Ref. - Pictorial on Sheet 2.)

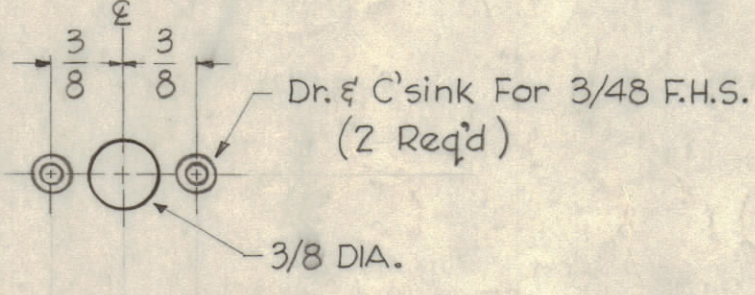


TOP VIEW
(Shown with Cover Removed.)



COVER DETAIL - 1 REQ FOR EACH CUTOUT REQUIRED.

NOTE - COVER TO BE SUPPLIED BY MANUFACTURER.
REF - TMC #MS-1900 FOR STOCKING AND SPARE PARTS PURPOSES ONLY.



"D" DETAIL
(4 REQ'D.)

M	SEE SHEET 5	4-4-67	18078	L.A.K.	W	W
L	ADD REQ NOTE TO COVER DETAIL. SEE SHEETS 1, 2, 3, 4, 5, 6	12-5-66	17379	RME		
K	SEE SHEET 1 OF 6 REV. "K"	3-12-65	13663	RF	W	
J	QTY. NOTE ADDED TO "COVER DETAIL"; SEE SHEETS 1, 3, 4, 6 REV. "J"	1-6-65	13203	RF	W	
H	SEE SHEET 1 OF 5	10-12-64	12609	RF	W	
G	SEE SHEET 1 OF 5	6-17-64	11556	A.M.	W	
F	PICTORIAL CORRECTED	6-5-63	9172		W	
E	HWK CLARIFIED, 7/16 DIM ADDED	4-28-63	8870		W	
D	ITEMS 2, 3, 4 QUAN. WAS 4	8-23-62	7112		W	
C	SEE SHEET 1 OF 5	7-25-62	6936	S.R.F.	W	
B	SEE SHEET 1 OF 5	10-11-61	5485	RF	W	
A	SEE SHEETS 1, 2, 3, 4, 5, 6. TOP HAT SUPPORT WAS 11 GA DIA. 16 7/8 WAS 17 1/8	8-4-61	5363	G.D.L.	W	RFM

NOTICE TO PERSONS RECEIVING THIS DRAWING
THE TECHNICAL MATERIEL CORPORATION claims proprietary right in the material disclosed herein. This drawing is issued in confidence for engineering information only and may not be reproduced or used to manufacture anything shown hereon without permission from THE TECHNICAL MATERIEL CORPORATION to the user. This drawing is loaned for mutual assistance and is subject to recall at any time.
Property of:
THE TECHNICAL MATERIEL CORPORATION
MAMARONECK, NEW YORK

4	6	F5-110-1	Stud, Slotted Head	
4	5	F5-109-3	Ring, Stud Retaining	
8	4	NTH0348BN6	Nut, Hex	
8	3	LWS03MRN	Lockwasher, Split	
8	2	SCFP0348BN6	Screw, Machine	
4	1	F5-102-1	Clip, Spring "S"	

REQ. UNIT	MODEL	SECTION	ASSY. NO.	DATE	TYPE & TEMPER.	HEAT TREAT. SPEC.	FINISH & SPEC. NO.	ELEC. DES. APP.	MECH. DES. APP.	SHEET	OF
				1-26-61						MS 2509	M

UNLESS OTHERWISE SPECIFIED:	SCALE
DIMENSIONS ARE IN INCHES	MAXIMUM ALLOWABLE TOLERANCES HAVE BEEN DETERMINED AND ANY DEVIATIONS WILL BE CAUSE FOR REJECTION. REMOVE ALL BURRS & SHARP EDGES
TOLERANCES ON FRACTIONS ± 1/64	DECIMALS ± .005
ANGLES ± 1/2°	

MS 2509 M

DEFIANCE NO. 1522 5433