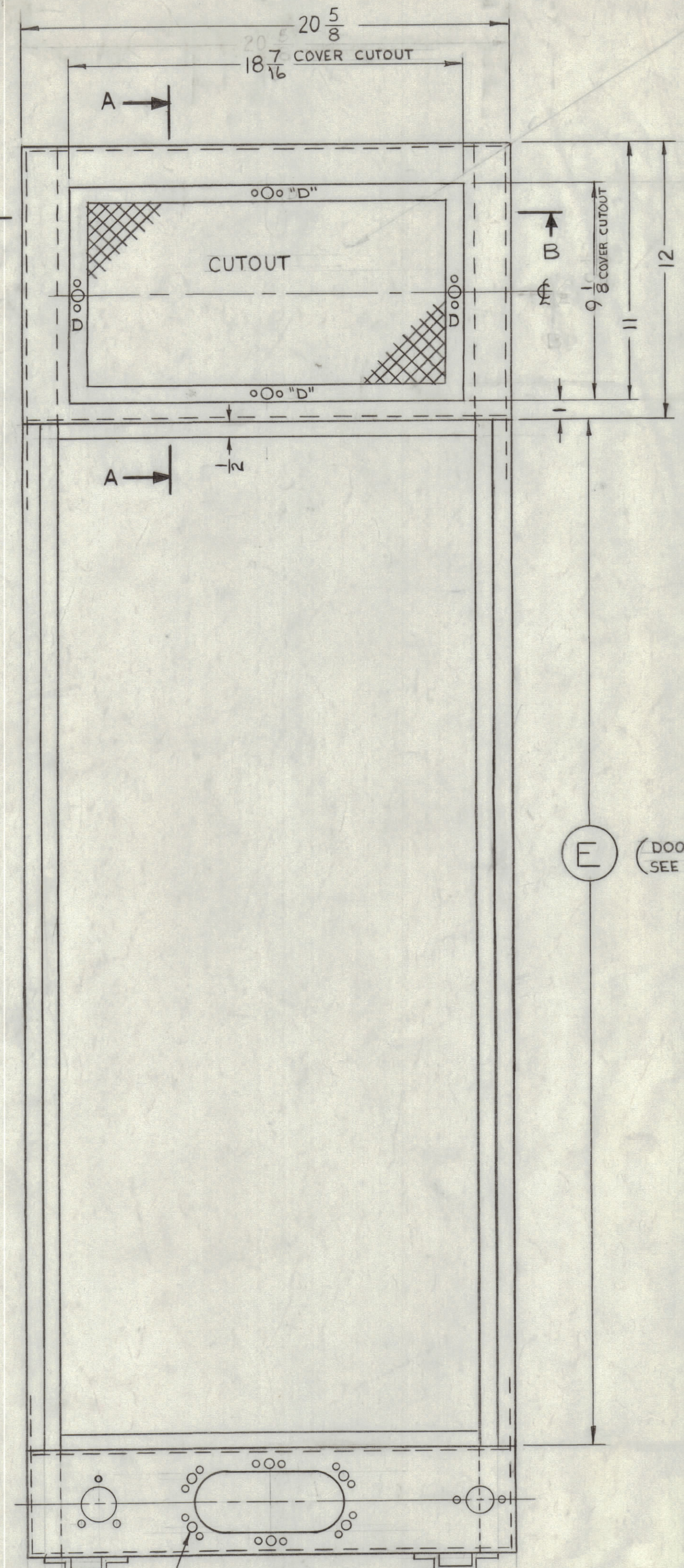
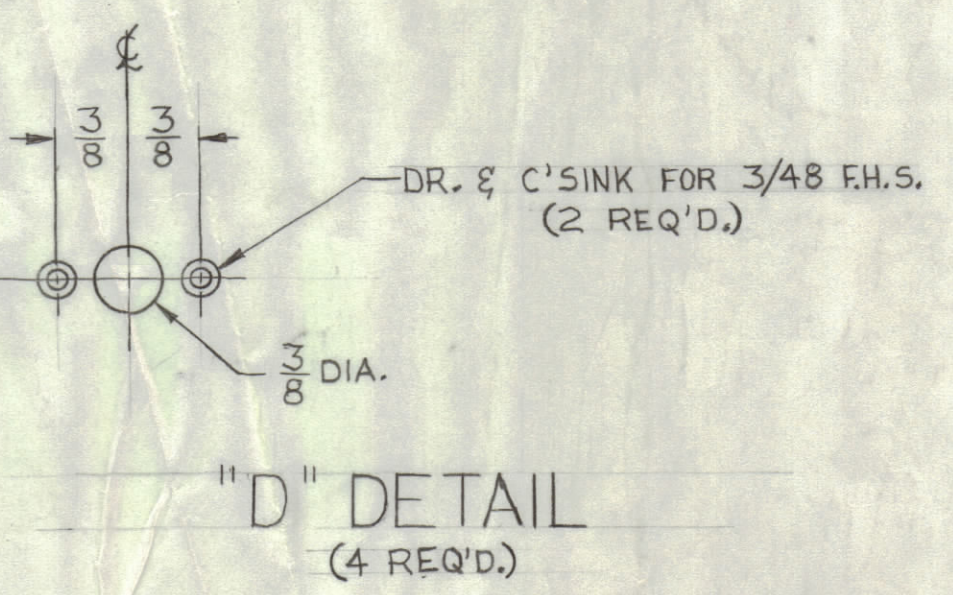
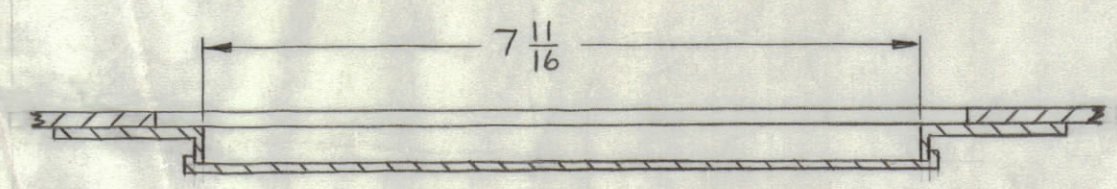
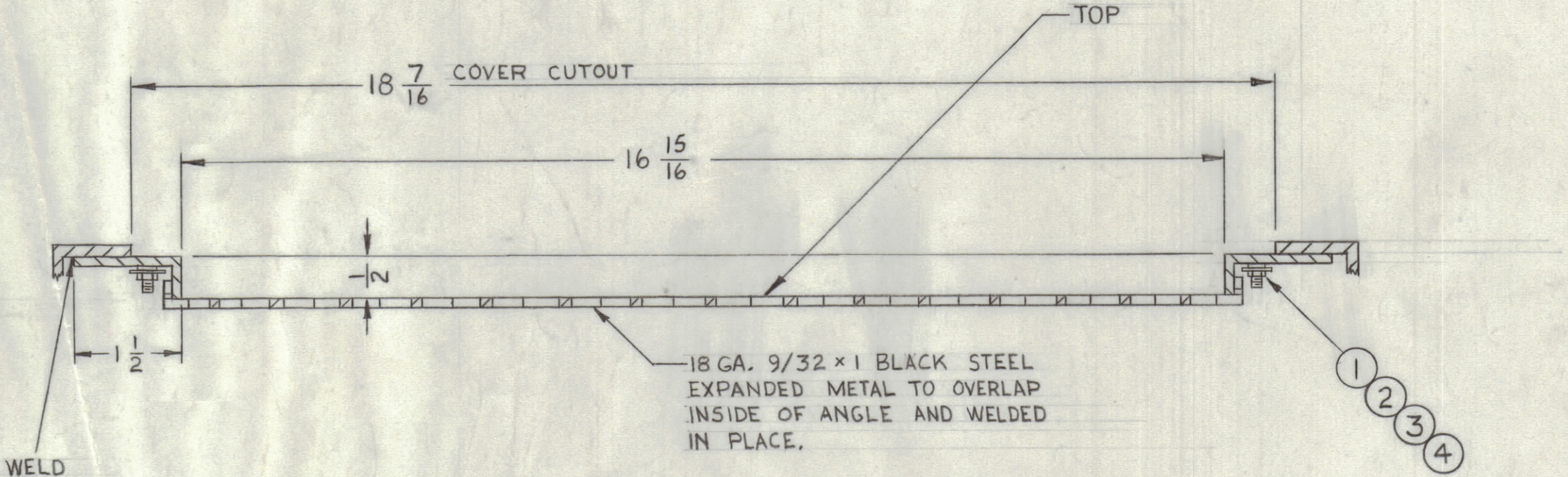


REVISIONS									
ZONE	SYM	DESCRIPTION	DATE	E.M.N. NO.	DRAFT	CHKD	APPD		
J		SHEET "6" ADD; SEE SHEETS 1 & 3 REV. "J"	1-6-65	13203	RE				
K		SEE SHEET 1 OF 6 REV. "K"	3-12-65	13663	RE				
L		CHG'D 18 7/8 TO 18 7/16. DELE "NO COVER SUPPL. REAR VIEW". DELE MS2509-4 REF. SEE SHEETS 1 & 4	12-5-66	17379	RME				
M		SEE SHEETS 1 & 4	4-4-67	18078	L.A.K.				



REPRODUCTION SUPPLIED WITH REAR CUTOUTS SHEET 4-4-5. THIS COVER IS SUPPLIED WITH REAR CUTOUT.



REQ'D.	ITEM	PART NUMBER	DESCRIPTION	SYMBOL
8	4	NTH0348BN6	NUT, PLAIN, HEX	
8	3	LW503MRN	WASHER, LOCK, SPLIT	
8	2	SCPP0348BN6	SCREW, MACHINE	
4	1	F5102-1	LOCKSPRING	

LIST OF MATERIAL				
MATERIAL	THE TECHNICAL MATERIEL CORP. MAMARONECK, NEW YORK			
FINISH	TITLE RACK, BASIC			
UNLESS OTHERWISE SPECIFIED DIMENSIONS ARE IN INCHES AND INCLUDE CHEMICALLY APPLIED OR PLATED FINISHES	DRAWN <i>J. Savana</i>	DATE 1-6-65	FINAL APPROVAL <i>KAL</i>	DATE
DECIMALS .X ± .05 .XX ± .01 .XXX ± .005	CHECKED <i>[Signature]</i>	DATE	ELECT. DES. <i>[Signature]</i>	DATE
FRACTIONS 1/64 ANGLES ± 90°	MECH. DES. <i>[Signature]</i>	DATE	M52509 M	
THE CONTENTS OF THIS DRAWING ARE THE EXCLUSIVE PROPERTY OF THE TECHNICAL MATERIEL CORP. ITS UNAUTHORIZED USE OR REPRODUCTION IN WHOLE OR IN PART IS STRICTLY FORBIDDEN.			SHEET 6 OF 6 REV. LTR.	

NOTES

MS2509 M