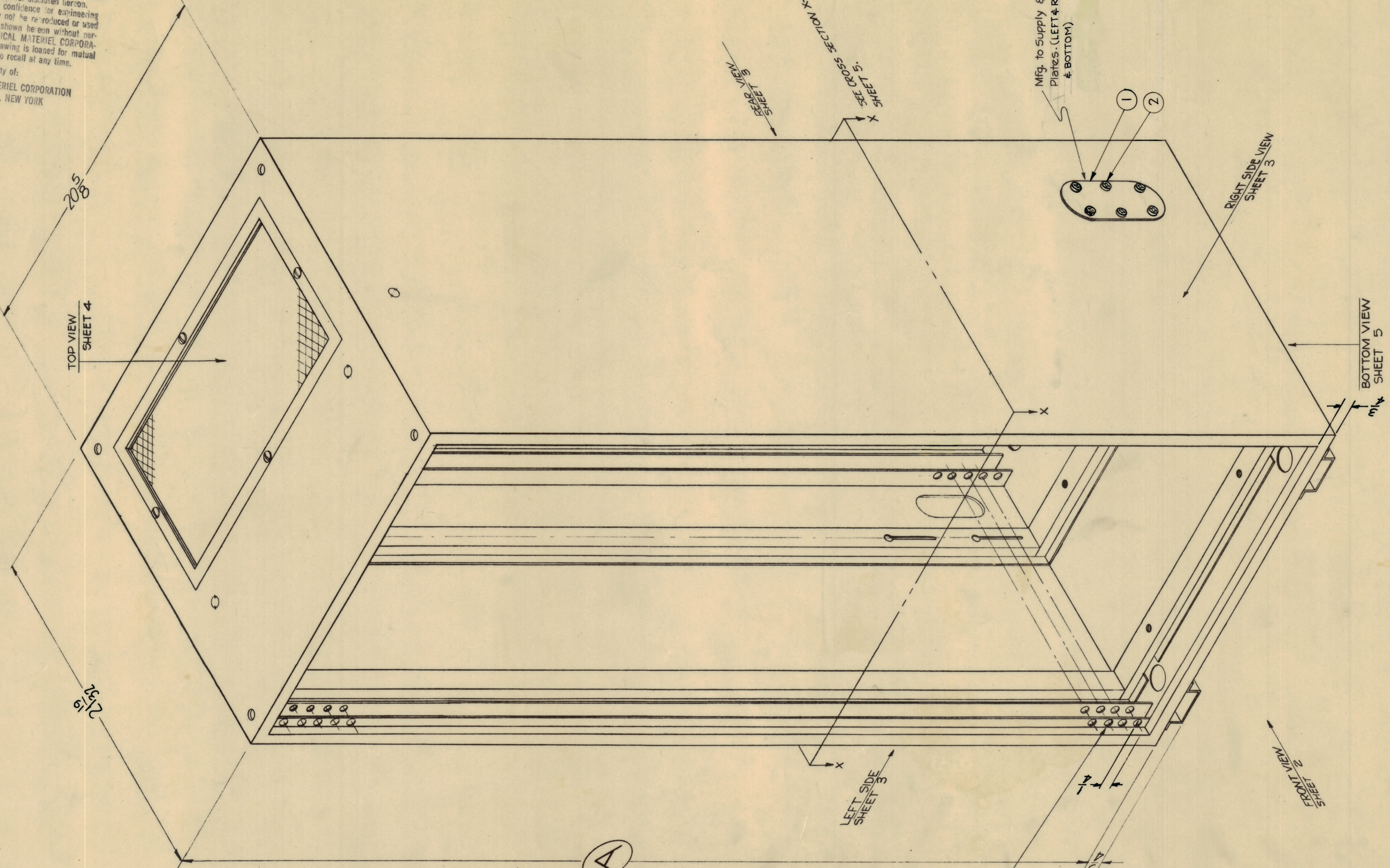


NOTICE TO PERSONS RECEIVING THIS DRAWING
 THE TECHNICAL MATERIEL CORPORATION claims proprietary right in the material disclosed herein. This drawing is issued in confidence or engineering information only and may not be re-produced or used to manufacture anything shown herein without permission from THE TECHNICAL MATERIEL CORPORATION to the user. This drawing is loaned for mutual assistance and is subject to recall at any time.

Property of:
 THE TECHNICAL MATERIEL CORPORATION
 MAMARONECK, NEW YORK



TOLERANCE SPECIFICATIONS
 (ALL SHEETS)
 OVERALL STRUCTURAL TOL. - ± 1/16.
 HOLE LOCATIONS - ± 1/64 C-C.
 OTHER TOLERANCES AS SPECIFIED.
 NOTE:
 DO NOT ACCUMULATE TOL. ON CHAIN DIMENSIONS.

FABRICATION NOTES
 MATERIAL: ALL MATERIAL IS 13 GAUGE STEEL UNLESS OTHERWISE SPECIFIED.

FINISH NOTES
 S114-ZINC CHROMATE PRIMER
 S220-TMC RCAF BLUE GREY SMOOTH ENAMEL.

TMC PART NO.	(A) (SHEET 2) OVERALL HEIGHT	(B) (SHEET 2) PANEL SPACING	(C) (SHEET 2) UNIVERSAL SPACING	(D) (SHEET 3) KEY SLOTS	QUANT. REQ.	USED ON (see Mod.Chart)
MS-2512	64-1/2	63	62 1/2	12		RAK-10

NOTE ~
 ALL MEMBER HOLES FRONT & REAR MUST BE ON A HORIZONTAL PLANE TO EACH OTHER WITHIN 1/32 TOL.

REV.	DATE	BY	CHKD.	DESCRIPTION
1	8-21-61	5434	5434	REVISED
2	8-21-61	5434	5434	REVISED
3	8-21-61	5434	5434	REVISED
4	8-21-61	5434	5434	REVISED

UNLESS OTHERWISE SPECIFIED:
 DIMENSIONS ARE IN INCHES
 TOLERANCES ON FRACTIONS ± 1/64 DECIMALS ± .005 ANGLES ± 1/2°
 MAXIMUM ALLOWABLE TOLERANCES HAVE BEEN DETERMINED AND ANY DEVIATIONS WILL BE CAUSE FOR REJECTION. REMOVE ALL BURRS & SHARP EDGES

REQ. PER UNIT	MODEL	SECTION	MOD. DWG. NO.	DATE
	RAK-10			7-11-61

REQ. ITEM	PART NO.	DESCRIPTION	SYMBOL
2	SCBP2520BNIO	SCREW, MACHINE	
3	MS-1850-S	PLATE, ACCESS	
THE TECHNICAL MATERIEL CORP. MAMARONECK, NEW YORK			
RACK, BASIC			
DRAWN		CHECKED	FINAL APPROVAL
RK		[Signature]	[Signature]
FINISH & SPEC. NO.		ELEC. DES. APP.	MECH. DES. APP.
MS-2512			
SHEET 1 OF 5		DEFIANCE NO. 1020 5057	