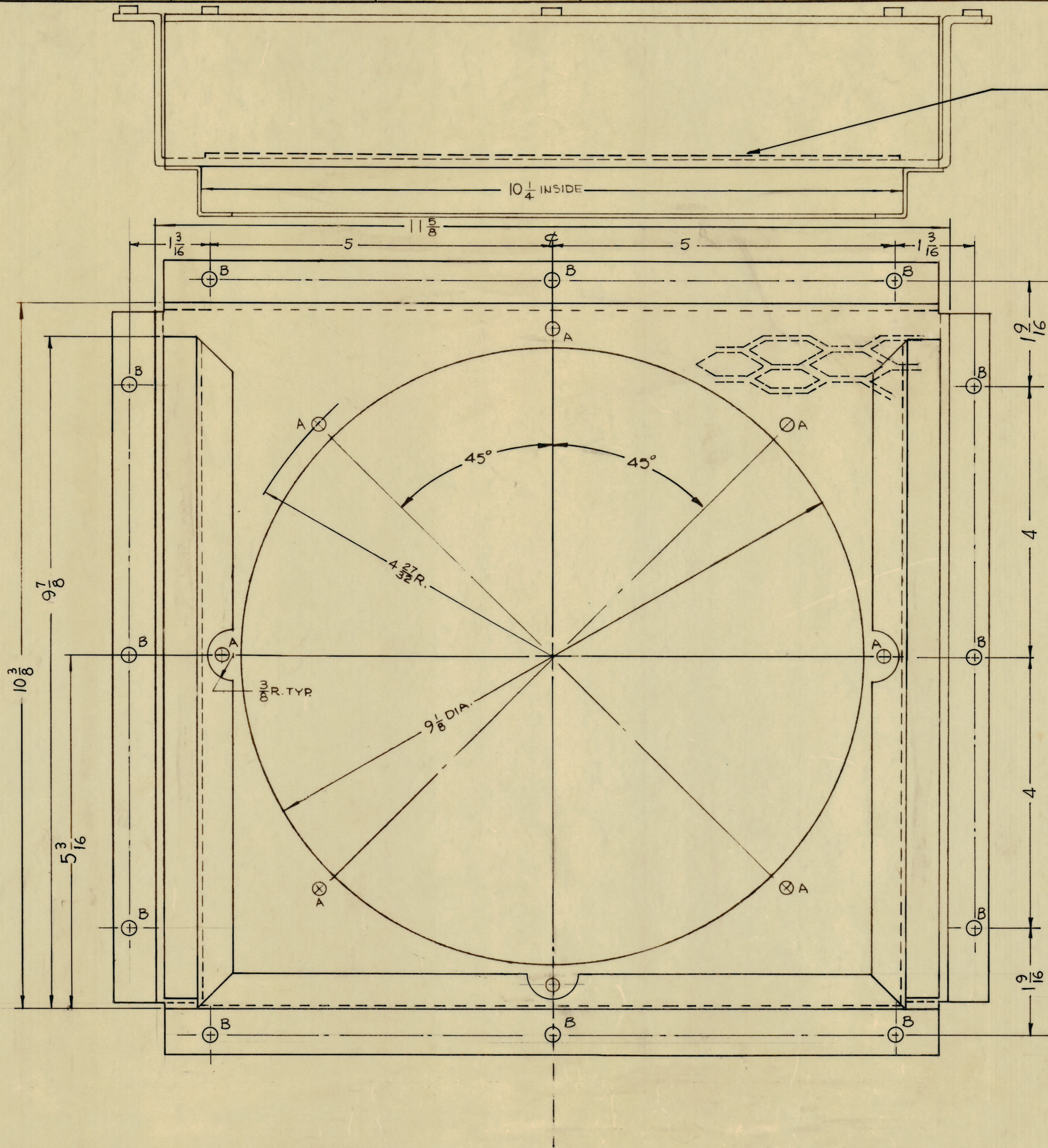
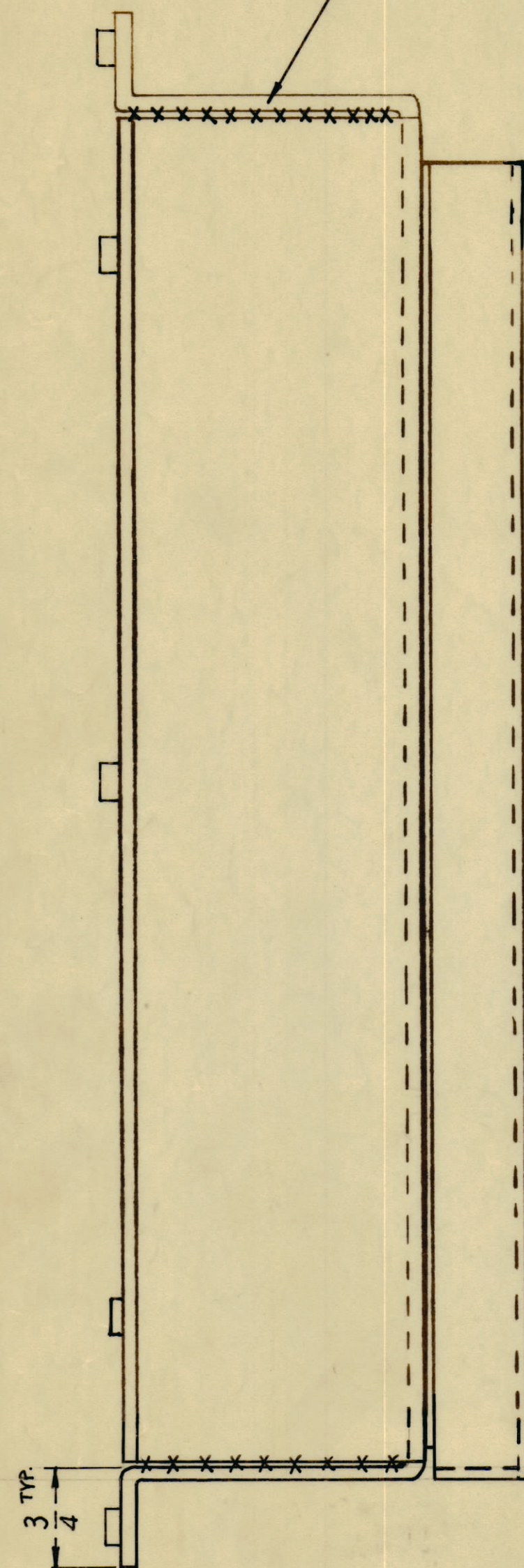


**NOTICE TO PERSONS RECEIVING THIS DRAWING**

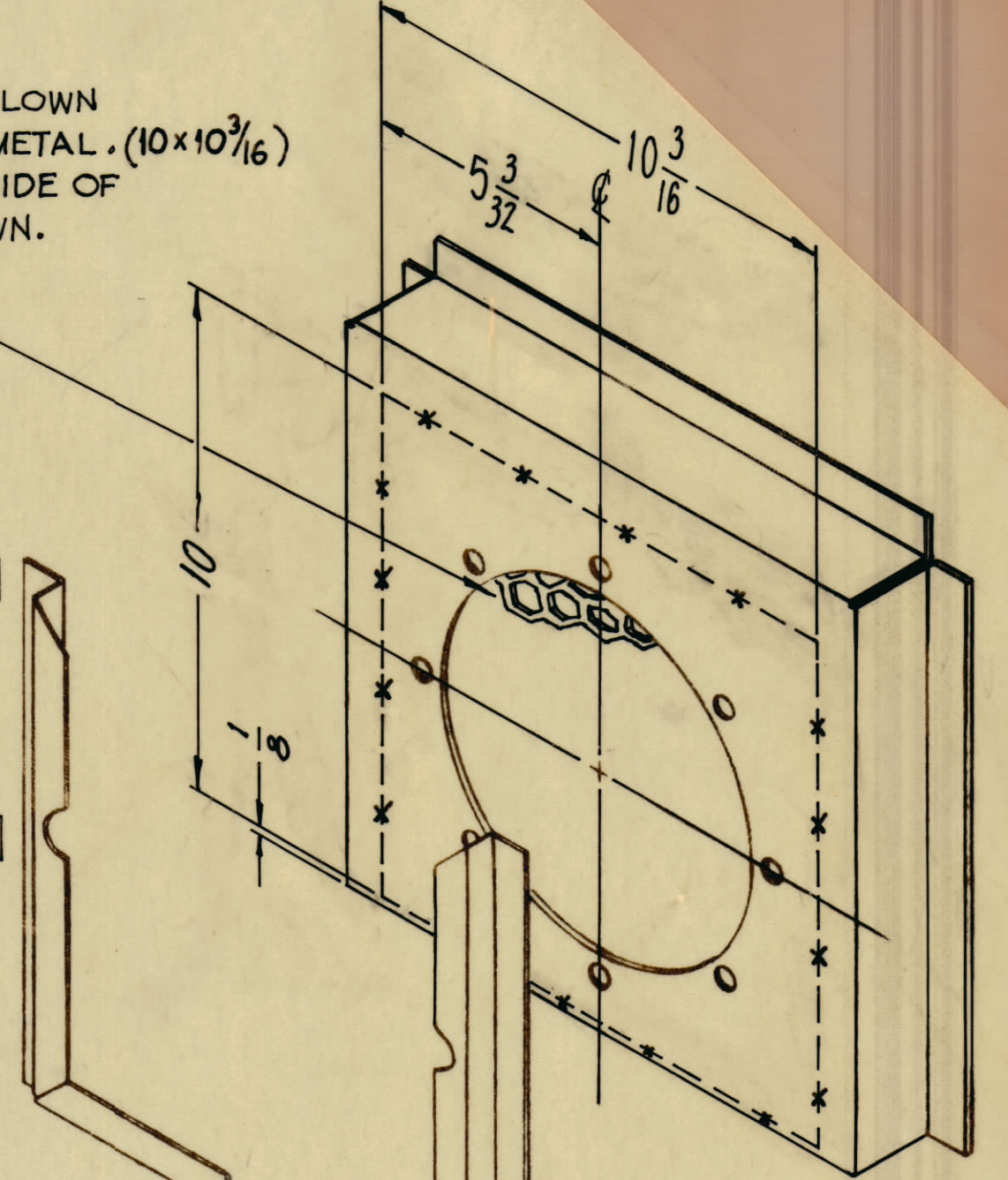
THE TECHNICAL MATERIEL CORPORATION claims proprietary right in the material disclosed herein. This drawing is issued in confidence for engineering information only and may not be reproduced or used to manufacture anything shown herein without permission from THE TECHNICAL MATERIEL CORPORATION to the user. This drawing is loaned for mutual assistance and is subject to recall at any time.

Property of:  
THE TECHNICAL MATERIEL CORPORATION  
MAMARONECK, NEW YORK

SEAMWELD AND GRIND SMOOTH  
(4 CORNERS)



18 GA., 9/32 X 1' BLOWN  
STEEL EXPANDED METAL (10x10 3/16)  
SPOTWELD TO INSIDE OF  
CHASSIS AS SHOWN.

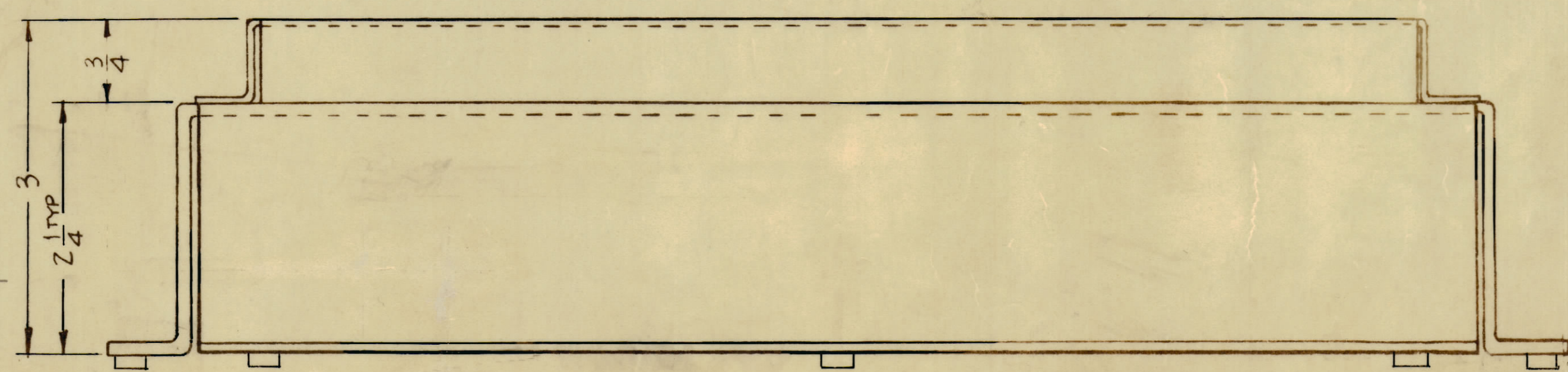


FILTER FRAME 16 GA.  
COLD ROLLED STEEL,  
SPOTWELD TO CHASSIS.

HOLES ~  
A ~ 3/16 DIA. 8 REQ.  
B ~ .221 For NT-129-832-4 12 REQ.  
.224

1 MOUNT AFTER FINISHING.

FINISH NOTE:  
PAINT  
S254 TMC BLUE GRAY



UNLESS OTHERWISE SPECIFIED:  
DIMENSIONS ARE IN INCHES  
CHEMICALLY APPLIED OR PLATED

DECIMALS	TOLERANCE
1/16 & OVER	± 0.01
1/32 & OVER	± 0.005
1/64 & OVER	± 0.002

3	ITEM # Added (NT-129-832-4)	3/16/61	4/20	DM	GC
2	(12) B Holes Added. .221-.224 DIA.				
1	CHASSIS HEIGHT WAS 1 15/8.				

UNLESS OTHERWISE SPECIFIED:  
DIMENSIONS ARE IN INCHES

TOLERANCES ON  
FRACTIONS ± 1/64 DECIMALS ± .005 ANGLES ± 1/2°

SCALE  
MAXIMUM ALLOWABLE TOLERANCES HAVE BEEN DETERMINED AND ANY DEVIATIONS WILL BE CAUSE FOR REJECTION. REMOVE ALL BURRS & SHARP EDGES

RAK-17				1-18-61
RAK-9				
MODEL	PROJECT NO.	ASS'Y. NO.	DATE	
USED ON				

12	1	NT-129-832-4	NUT, SWAGE TYPE
REQ	ITEM	PART NO.	DESCRIPTION
STEEL			THE TECHNICAL MATERIEL CORP. MAMARONECK, NEW YORK
STEEL			CHASSIS, BLOWER
MATERIAL			
TYPE & TEMPER			HEAT TREAT. SPEC.
FINISH & SPEC. NO.			
ELEC. DES. APP.			MECH. DES. APP.
SHEET			OF

MS-2518 A

MS-2518 A