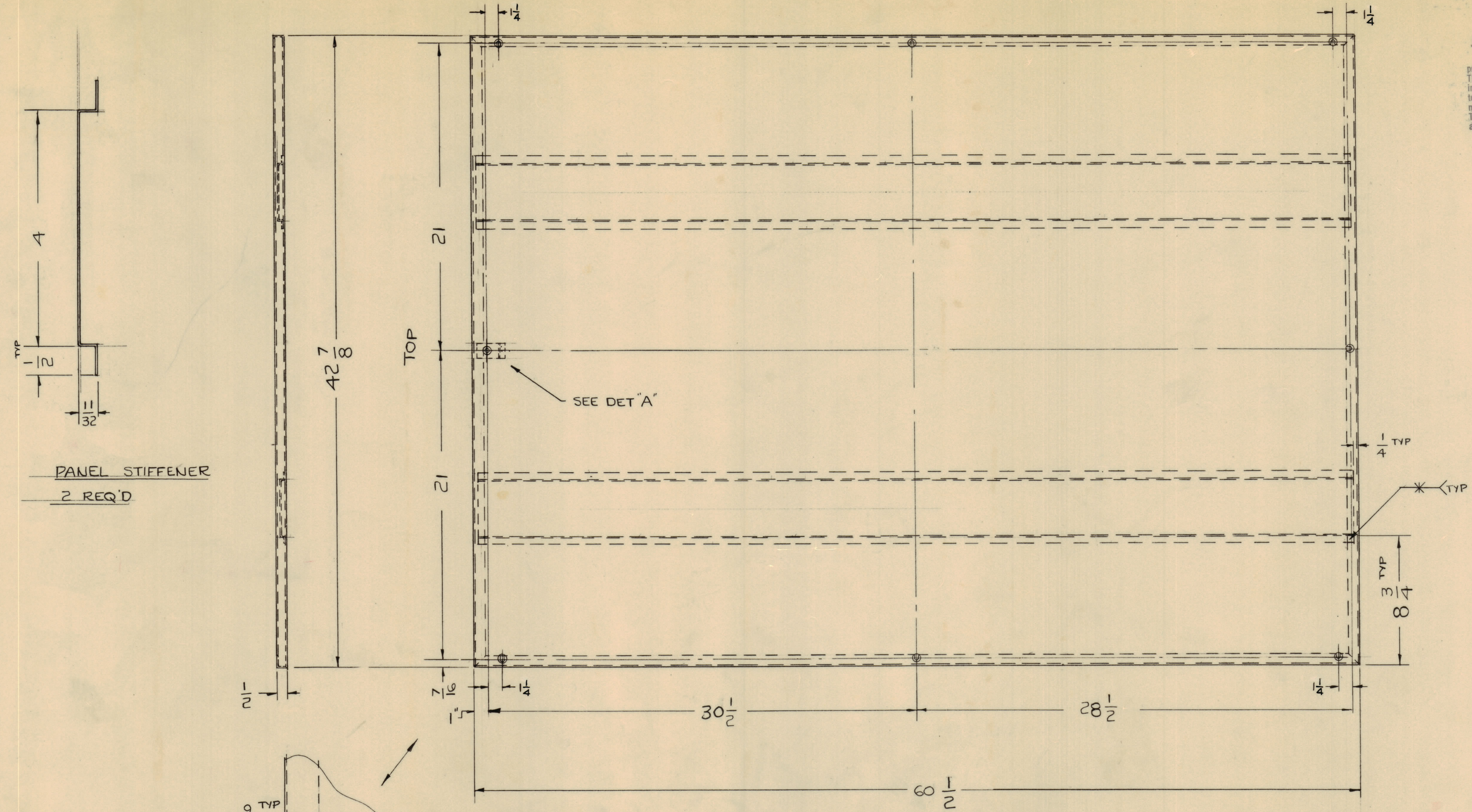


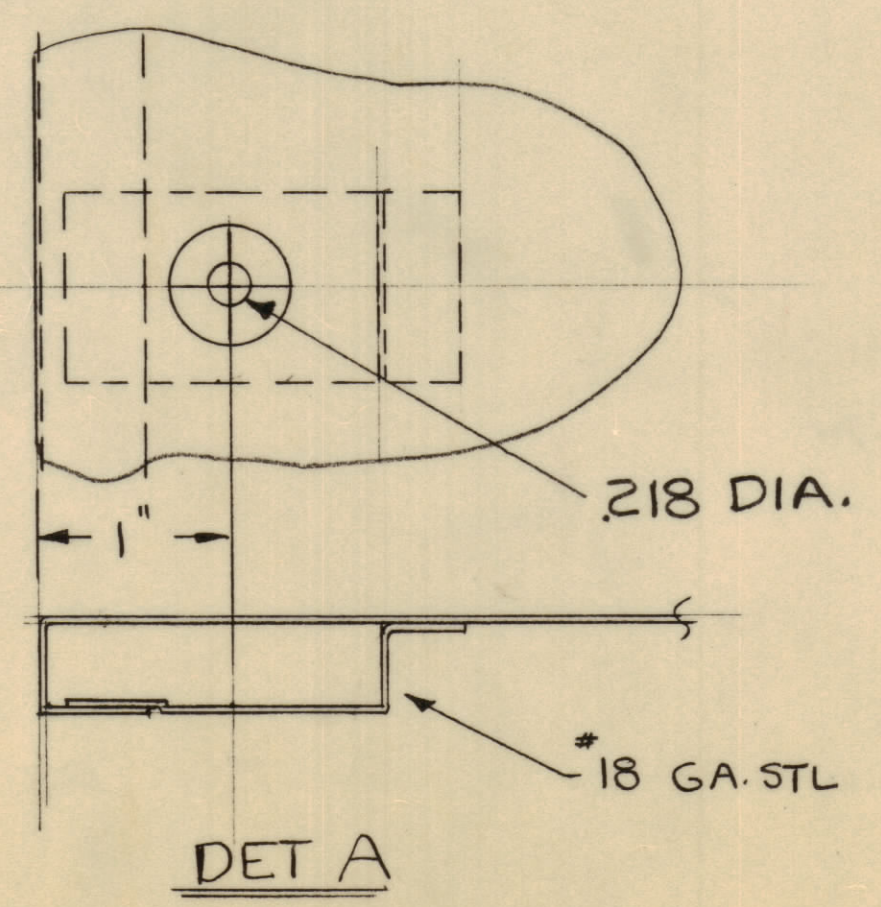
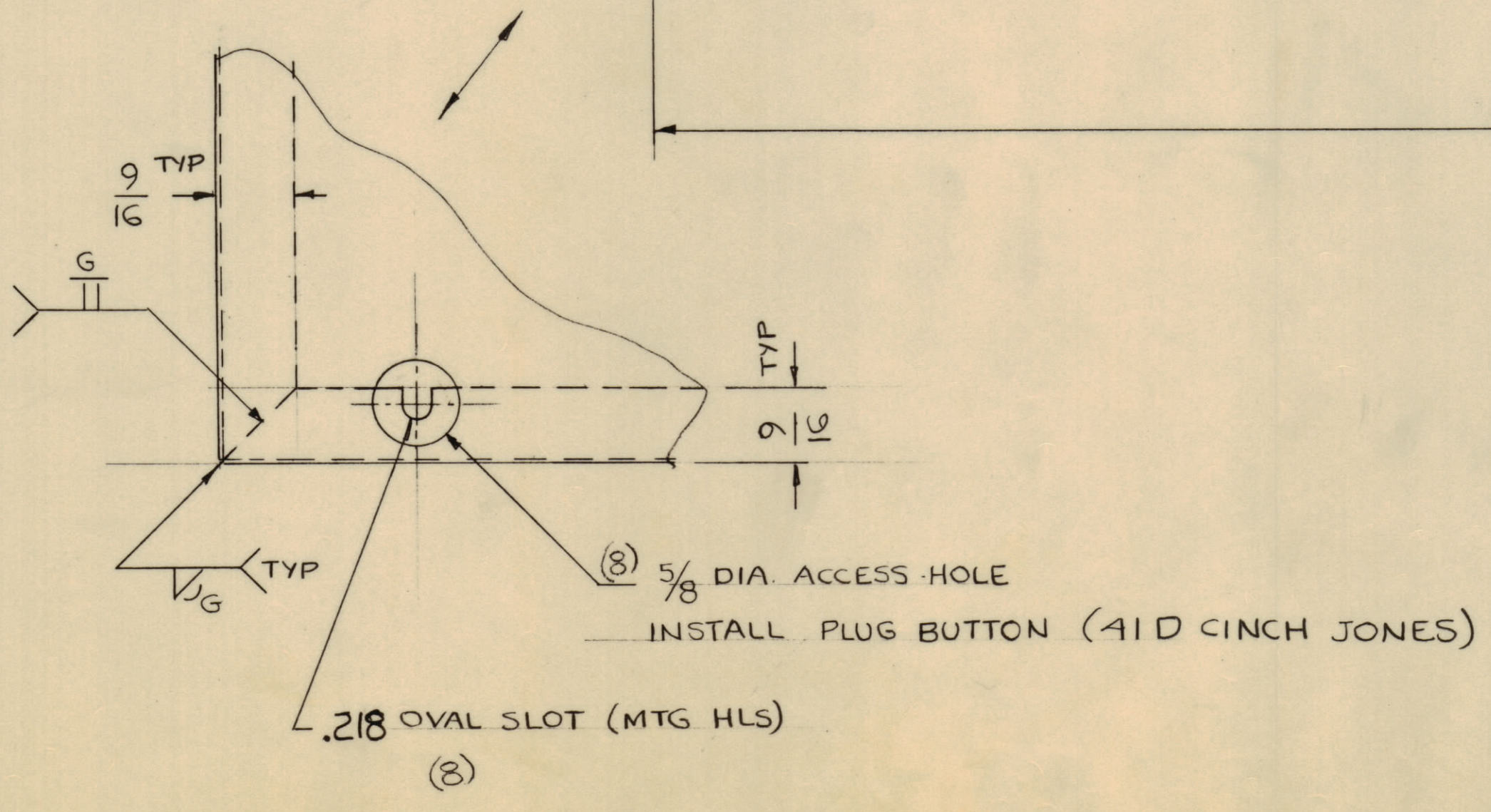
NOTICE TO PERSONS RECEIVING THIS DRAWING  
 THE TECHNICAL MATERIEL CORPORATION claims proprietary right in the material disclosed herein. This drawing is issued in confidence for engineering information only and may not be reproduced or used to manufacture anything shown herein without permission from THE TECHNICAL MATERIEL CORPORATION to the user. This drawing is loaned for mutual assistance and is subject to recall at any time.  
 Property of:  
 THE TECHNICAL MATERIEL CORPORATION  
 MAMARONECK, NEW YORK



PANEL STIFFENER  
 2 REQ'D

SEE DET "A"

FINISH —  
 S114 - ZINC CHROMATE PRIMED  
 S220 - TMC RCAF BLUE GRAY SMOOTH ENAMEL  
 UNLESS OTHERWISE SPECIFIED  
 MATERIAL —  
 20 GAUGE STEEL



UNLESS OTHERWISE SPECIFIED	
DIMENSIONS ARE IN INCHES AND INCLUDE CHEMICALLY APPLIED OR PLATED FINISHES	
DECIMALS	FRACTIONS
± .05	± 1/64
± .01	± 1/32
± .005	± 1/64
	ANGLES ± 30'

SYM	ZONE	DESCRIPTION	DATE	CH. NO.	DRAFTS	CHECKER	ENG. APP.
A	6-9-3	(8) .218 SLOTS & 5/8 DIA ACCESS HOLES RELOCATED	1-4-62	6161	J.B.	RB	MS-2566

UNLESS OTHERWISE SPECIFIED: SCALE  $\infty$  NOT SCALE

DIMENSIONS ARE IN INCHES

TOLERANCES ON FRACTIONS ± 1/64 DECIMALS ± .005 ANGLES ± 1/2°

MAXIMUM ALLOWABLE TOLERANCES HAVE BEEN DETERMINED AND ANY DEVIATIONS WILL BE CAUSE FOR REJECTION. REMOVE ALL BURRS & SHARP EDGES

REQ. PER UNIT	MODEL	SECTION	ASSY. NO.	DATE
1	TE2254/50			9-28-61

REQ. ITEM	PART NO.	DESCRIPTION	SYMBOL
AS NOTED		THE TECHNICAL MATERIEL CORP. MAMARONECK, NEW YORK	
AS NOTED		PANEL, DEAD	
		MATERIAL	
		M.M. <i>H.C.</i> <i>RB/EB</i>	
		DRAWN <i>aa</i> CHECKED <i>RP</i> FINAL APPROVAL	
		AS NOTED	
		FINISH & SPEC. NO.	
		ELEC. DES. APP. MECH. DES. APP. SHEET OF	
		MS-2566	A

MS-2566 A