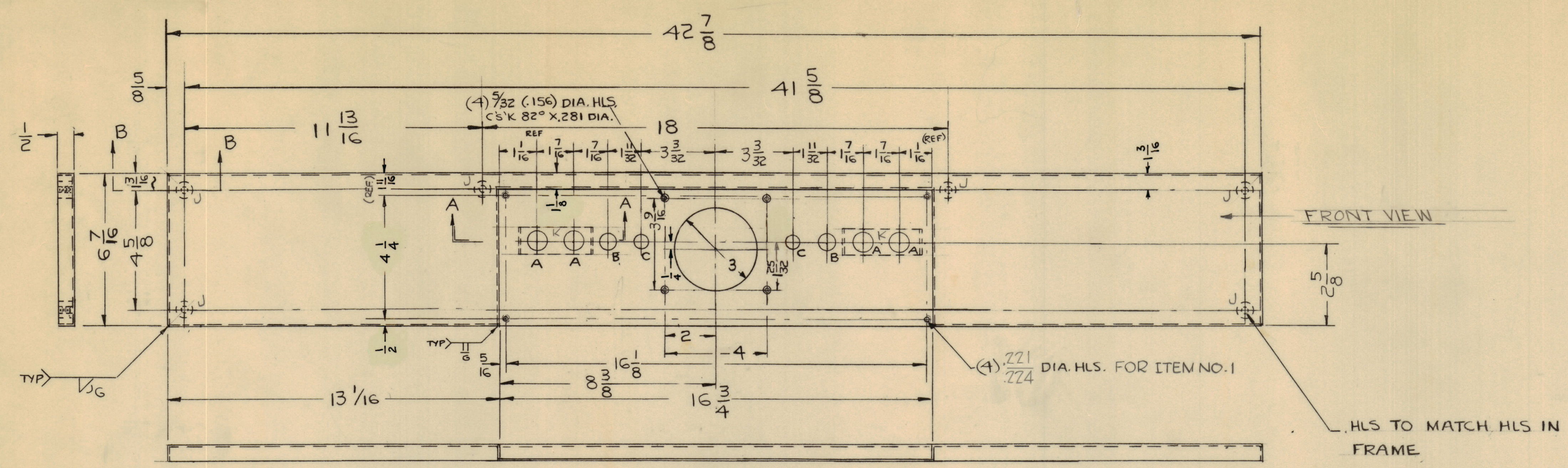
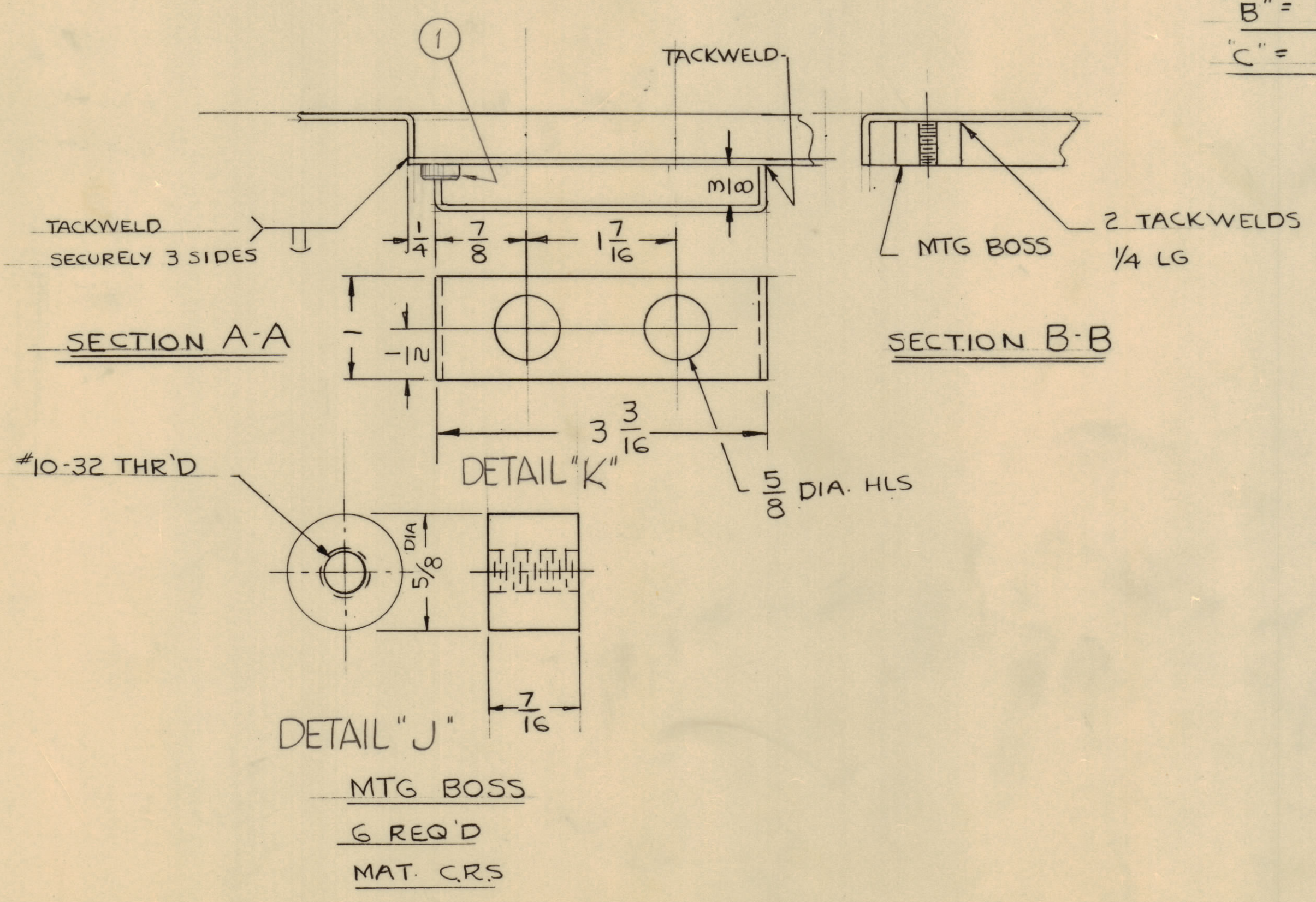


NOTICE TO PERSONS RECEIVING THIS DRAWING  
 THE TECHNICAL MATERIEL CORPORATION claims proprietary right in the material disclosed herein. This drawing is issued in confidence for engineering information only and may not be reproduced or used to manufacture anything shown hereon without permission from THE TECHNICAL MATERIEL CORPORATION to the user. This drawing is loaned for mutual assistance and is subject to recall at any time.  
 Property of:  
 THE TECHNICAL MATERIEL CORPORATION  
 MAMARONECK, NEW YORK



"A" = 7/8 DIA. HL (4)  
 "B" = 1 1/16 DIA. HL (2)  
 "C" = 1/2 DIA. HL (2)



FINISH —  
 AFTER ASSY OF ALL NECESSARY PARTS

5114 - ZINC CHROMATE PRIMER  
 5220 - TMC RCAF BLUE GRAY SMOOTH ENAMEL  
 COPPER FLASH COMPLETE PANEL.  
 PAINT FRONT & EDGES ONLY.  
 UNLESS OTHERWISE SPECIFIED —

MATERIAL —  
 16 GAUGE STEEL

SYM	ZONE	DESCRIPTION	DATE	CH. NO.	DRAFTS	CHECKER	ENG. APP.
A	#	COPPER FLASH COMPLETE PANEL, PAINT FRONT & EDGES ONLY ADDED	6-22-64	11642	A.M.		
UNLESS OTHERWISE SPECIFIED:			SCALE DO NOT SCALE				
DIMENSIONS ARE IN INCHES			MAXIMUM ALLOWABLE TOLERANCES HAVE BEEN DETERMINED AND ANY DEVIATIONS WILL BE CAUSE FOR REJECTION. REMOVE ALL BURRS & SHARP EDGES				
TOLERANCES ON							
FRACTIONS ± 1/64			DECIMALS ± .005				
			ANGLES ± 1/2°				

REF. LD-969		4 1 NT179-837-4 NUT, ROUND, SWAGE TYPE	
REQ. UNIT	MODEL	SECTION	ASSY. NO.
1	TER75K/50		
			DATE
			9-28-61
			TYPE & TEMPER
			AS NOTED
			HEAT TREAT. SPEC.
			FINISH & SPEC. NO.
			ELEC. DES. APP.
			MECH. DES. APP.
			SHEET OF
			MS-2567 A

MS-2567 A

A

A