

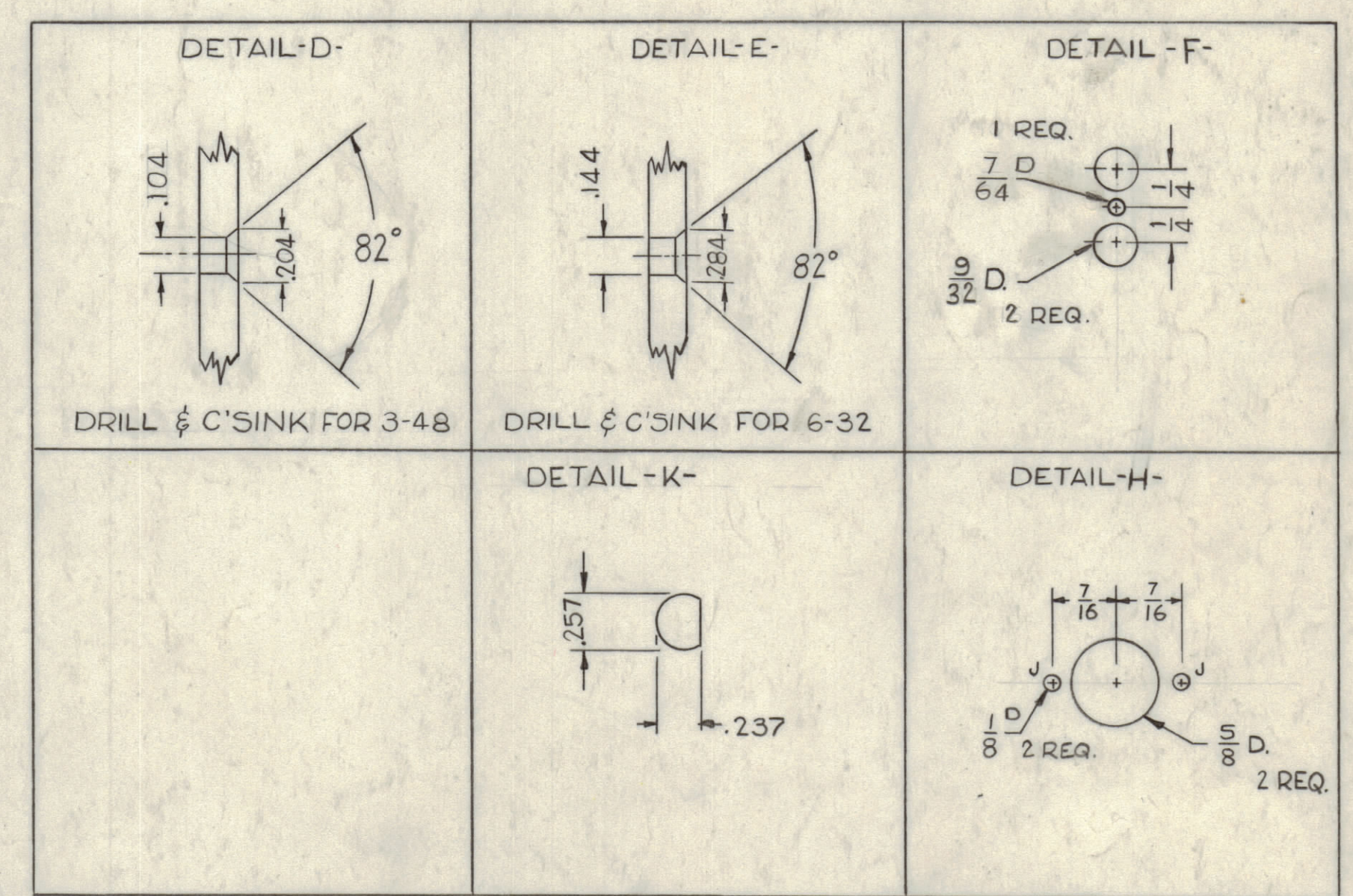
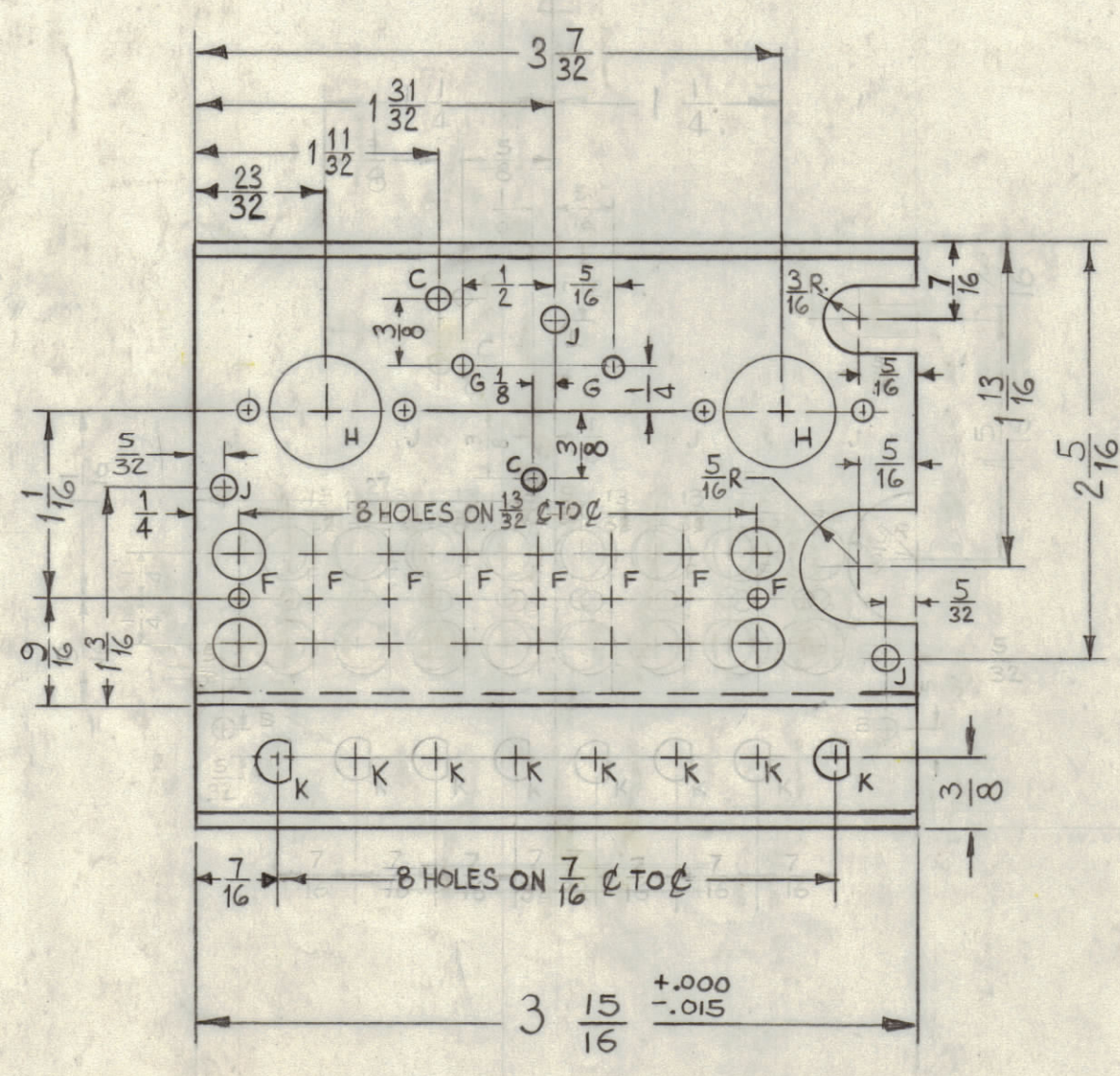
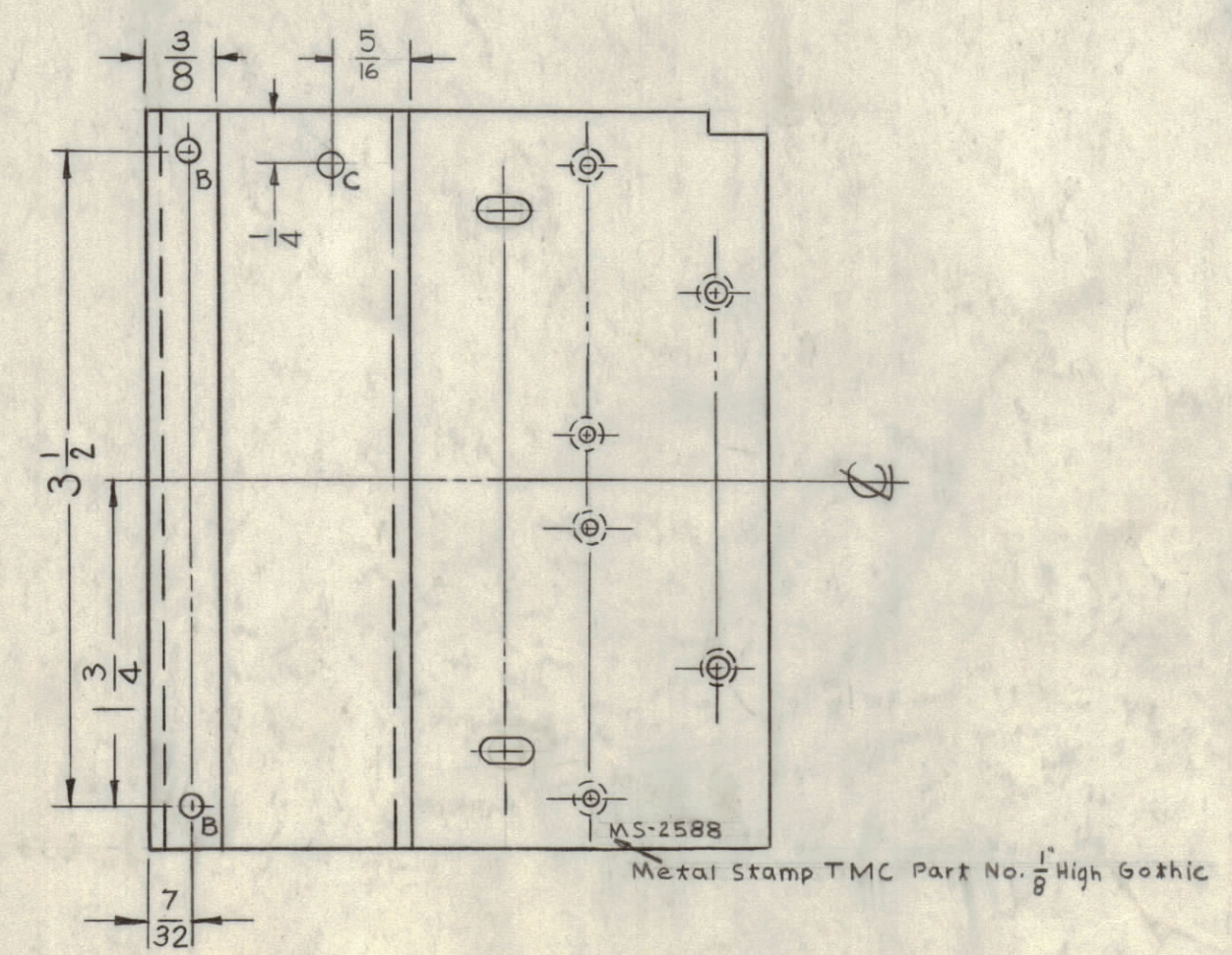
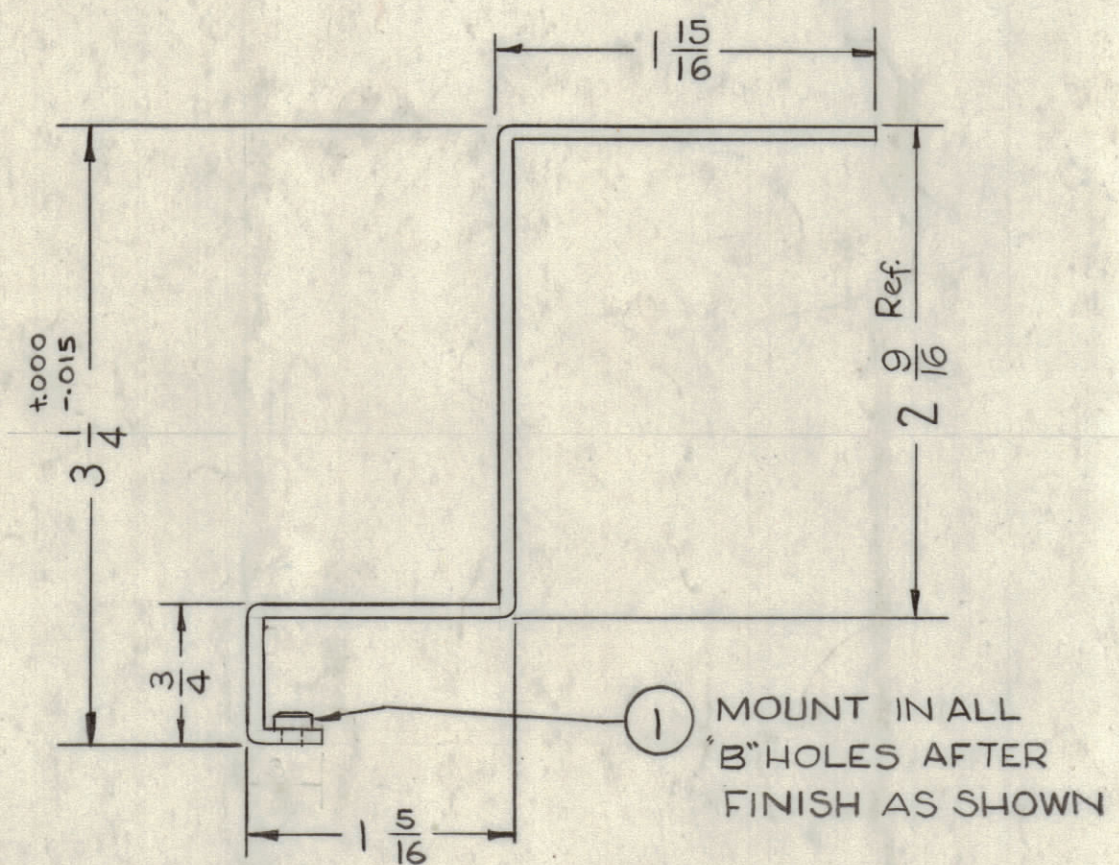
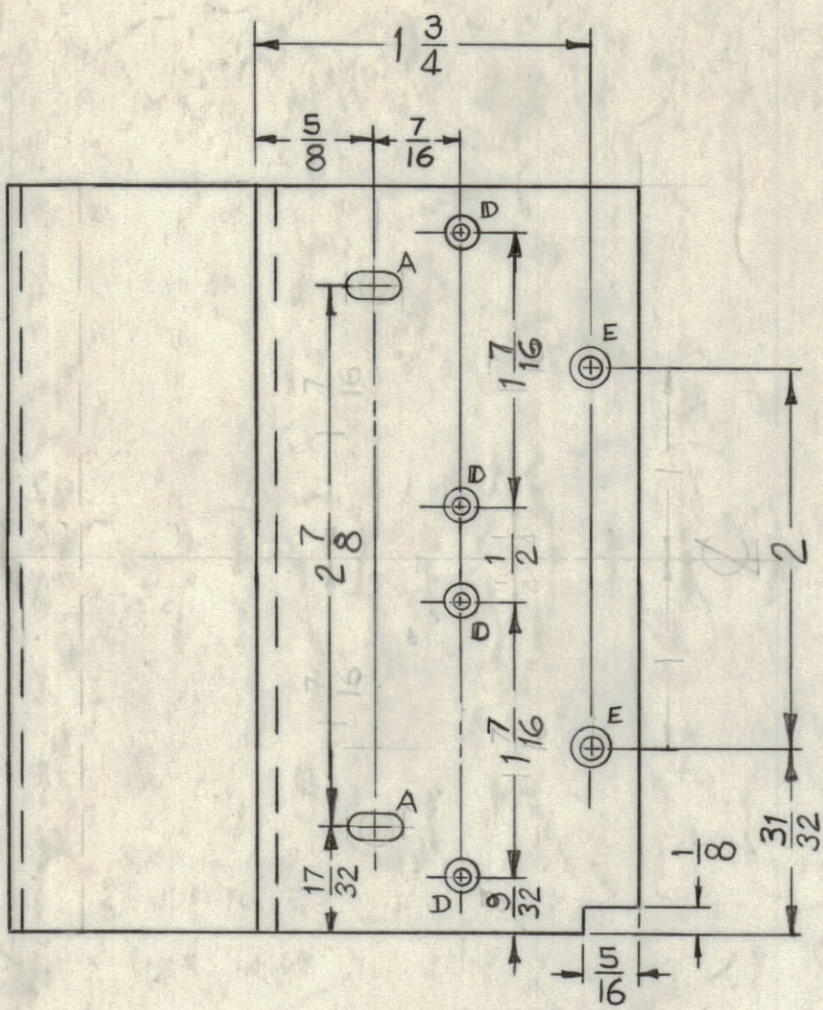
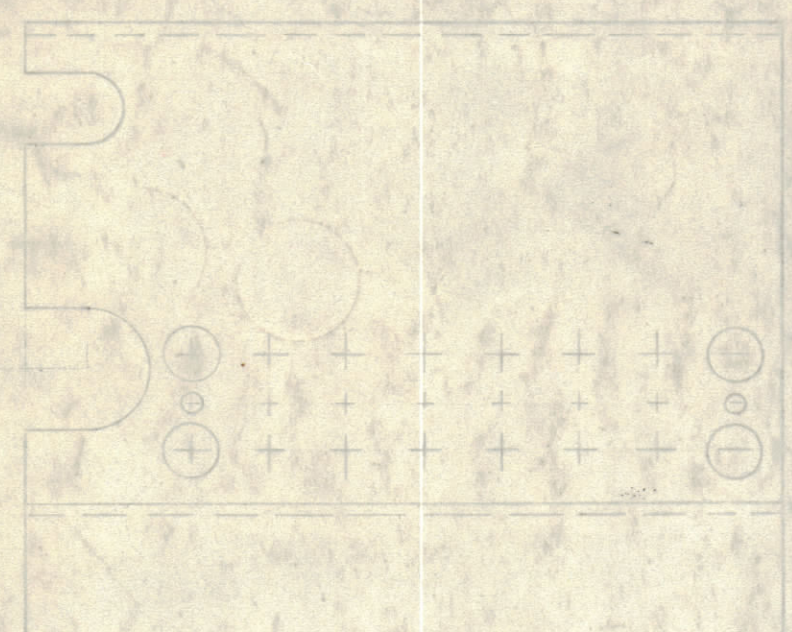
NOTICE TO PERSONS RECEIVING THIS DRAWING

THE TECHNICAL MATERIEL CORPORATION claims proprietary right in the material disclosed hereon. This drawing is issued in confidence for engineering information only and may not be reproduced or used to manufacture anything shown hereon without permission from THE TECHNICAL MATERIEL CORPORATION to the user. This drawing is loaned for mutual assistance and is subject to recall at any time.

Property of:
THE TECHNICAL MATERIEL CORPORATION
MAMARONECK, NEW YORK

NOTE
USE MATERIAL THICKNESS FOR
MAX. RADIUS ON BEND UNLESS
OTHERWISE SPECIFIED.

- A-9/64 X 9/32 SLOT 2 REQ.
- B-.161-.164 DIA. 2 REQ.
- C-1/8 DIA. 3 REQ.
- D-SEE DETAIL 4 REQ.
- E-SEE DETAIL 2 REQ.
- F-SEE DETAIL 8 REQ.
- G-7/64 DIA 2 REQ.
- H-SEE DETAIL 2 REQ.
- J-9/64 DIA. 3 REQ.
- K-SEE DETAIL 8 REQ.
- L-9/64 DIA. 1 REQ.



NOTES
1- USE MATERIAL THICKNESS FOR
MAX. RADIUS ON BENDS UNLESS
OTHERWISE SPECIFIED
2- INSERTS ARE TO BE MOUNTED
AFTER FINISHING.

UNLESS OTHERWISE SPECIFIED
DIMENSIONS ARE IN INCHES AND INCLUDE
CHEMICALLY APPLIED OR PLATED FINISHES

DECIMALS: .005
FRACTIONS: 1/64
ANGLES: 90°

TOLERANCES: ± 1/64

SYM	ZONE	DESCRIPTION	DATE	CH. NO.	DRAFTS	CHECKER	ENG. APP.
A	CB	1" C HOLE ADDED	10-11-61	5699	IF	AB	[Signature]

UNLESS OTHERWISE SPECIFIED:
DIMENSIONS ARE IN INCHES
TOLERANCES ON
FRACTIONS ± 1/64
DECIMALS ± .005
ANGLES ± 1/2°

MAXIMUM ALLOWABLE TOLERANCES HAVE
BEEN DETERMINED AND ANY DEVIATIONS
WILL BE CAUSE FOR REJECTION.
REMOVE ALL BURRS & SHARP EDGES

REF: LD-927 (4)

2	1	NT-129-440-4	NUT ROUND, SWAGE TYPE
REQ. ITEM	PART NO.	DESCRIPTION	SYMBOL
.064		THE TECHNICAL MATERIEL CORP. MAMARONECK, NEW YORK	
ALUMINUM		CHASSIS, HFO	
MATERIAL			
5052-H32		R. UZZO	[Signature]
TYPE & TEMPER	HEAT TREAT. SPEC.	DRAWN	CHECKED
3404 YELL. IRIDITE		[Signature]	[Signature]
FINISH & SPEC. NO.		ELEC. DES. APP.	MEGH. DES. APP.
		[Signature]	[Signature]
		SHEET	OF
		MS-2588	A

MS-2588 A