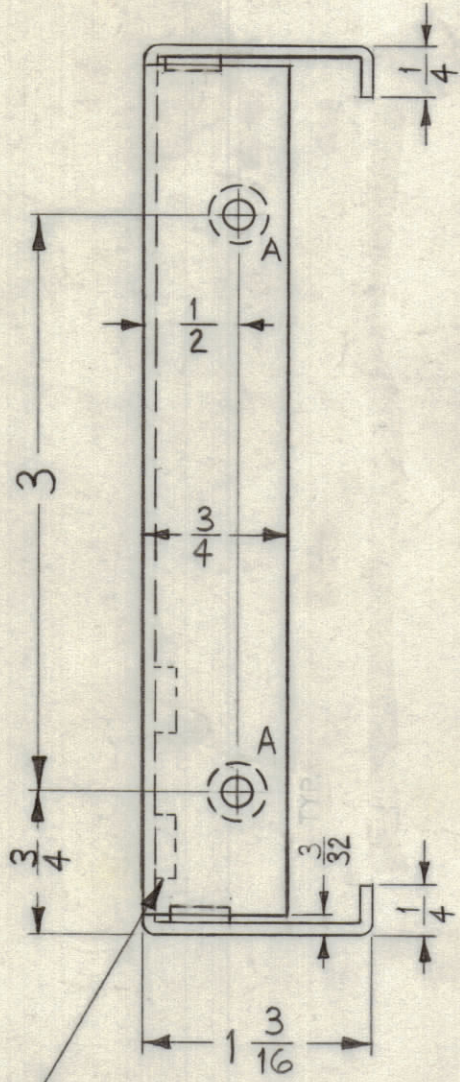


NOTICE TO PERSONS RECEIVING THIS DRAWING

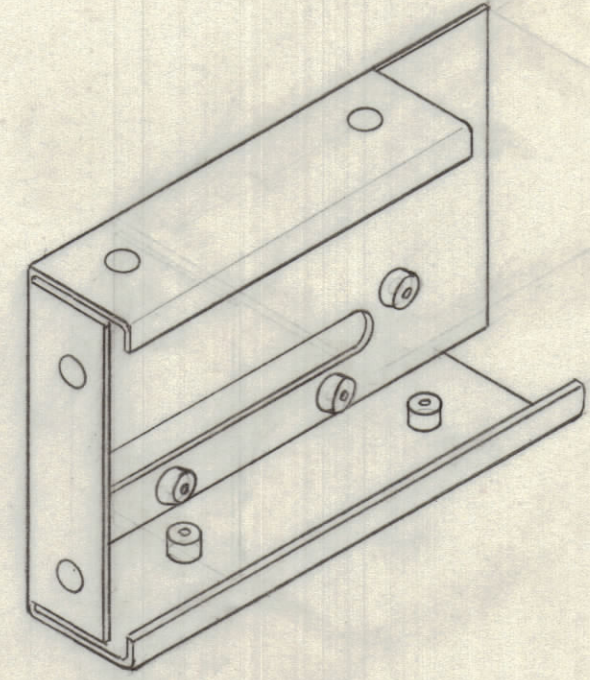
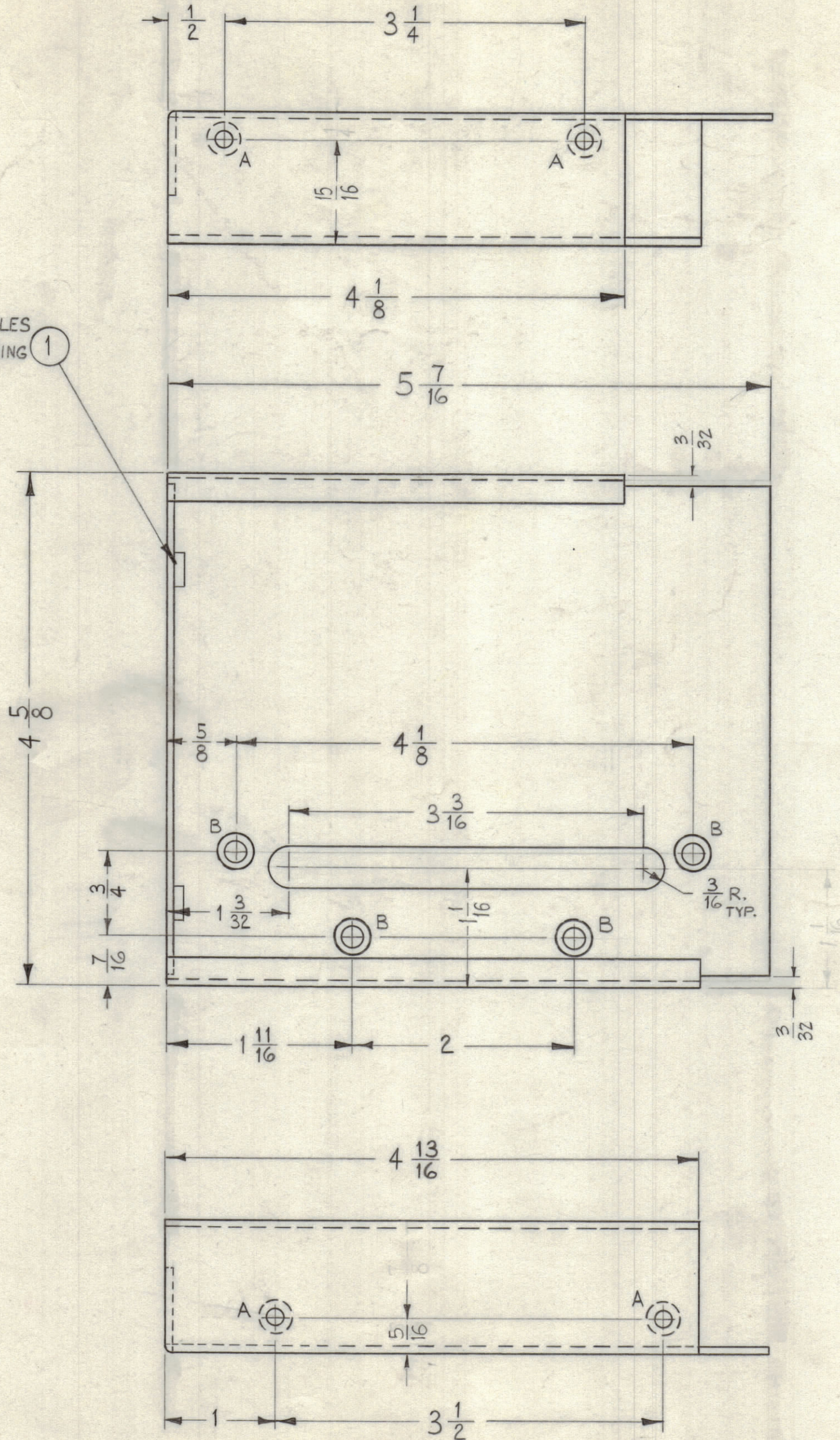
THE TECHNICAL MATERIEL CORPORATION claims proprietary right in the material disclosed hereon. This drawing is issued in confidence for engineering information only and may not be reproduced or used to manufacture anything shown hereon without permission from THE TECHNICAL MATERIEL CORPORATION to the user. This drawing is loaned for mutual assistance and is subject to recall at any time.

Property of:
THE TECHNICAL MATERIEL CORPORATION
MAMARONECK, NEW YORK

MOUNT IN ALL "A" HOLES AS SHOWN AFTER FINISHING ①



MOUNT IN ALL "B" HOLES AS SHOWN AFTER FINISHING ②



A~.191-.194 DIA. 6 REQ.
B~.221-.224 DIA. 4 REQ.

MOUNT INSERTS AFTER FINISHING
USE MATERIAL THICKNESS FOR MAX. RADIUS ON ALL BENDS UNLESS OTHERWISE SPECIFIED

REF: LD-928 (2)

REQ.	ITEM	PART NO.	DESCRIPTION	SYMBOL
4	2	NT-129-832-4	NUT, ROUND, SWAGE TYPE	
6	1	NT-129-632-4	NUT, ROUND, SWAGE TYPE	
MATERIAL				
.064				
STOCK SIZE				
ALUMINUM				
THE TECHNICAL MATERIEL CORP. MAMARONECK, NEW YORK				
REAR COVER, OUTER SHELL				
MATERIAL				
5052-H32				
TYPE & TEMPER HEAT TREAT. SPEC.				
S404 YELLOW IRIDITE				
FINISH & SPEC. NO.				
MS-2590				

UNLESS OTHERWISE SPECIFIED
DIMENSIONS ARE IN INCHES AND INCLUDE
CHEMICALLY APPLIED OR PLATED FINISHES

DECIMALS .X ± .05
.XX ± .01
.XXX ± .005

FRACTIONS ± 1/64
ANGLES ± 0° 30'

TOLERANCES

CUT HERE
GUARANTEED
2-66

SYM	ZONE	DESCRIPTION	DATE	CH. NO.	DRAFTS	CHECKER	ENG. APP.
UNLESS OTHERWISE SPECIFIED: DIMENSIONS ARE IN INCHES							
TOLERANCES ON FRACTIONS ± 1/64 DECIMALS ± .005 ANGLES ± 1/2°							
SCALE FULL (DO NOT SCALE)							
MAXIMUM ALLOWABLE TOLERANCES HAVE BEEN DETERMINED AND ANY DEVIATIONS WILL BE CAUSE FOR REJECTION. REMOVE ALL BURRS & SHARP EDGES							

REQ. PER UNIT	MODEL	SECTION	ASS'Y. NO.	DATE
1	CHG-2	OVEN		5-25-61
USED ON				